



4/29 FORMAL PLANNING SUBMITTAL



NOFA



4/29 FORMAL PLANNING SUBMITTAL ALT



9/27 FORMAL PLANNING SUBMITTAL

- NTS 

1020 TERRA BELLA - DESIGN CHANGES/DIAGRAMS | COLOR PALETTES

MOUNTAIN VIEW, CA | SEPTEMBER 27, 2022 | ALTA HOUSING; PALO ALTO, CA



NOFA / 4/29 FORMAL SUBMITTAL



9/27 FORMAL SUBMITTAL



NOFA / 4/29 FORMAL SUBMITTAL



9/27 FORMAL SUBMITTAL

- NTS 

1020 TERRA BELLA - DESIGN CHANGES/DIAGRAMS | MASSING & COLOR PALETTE CHANGES

MOUNTAIN VIEW, CA | SEPTEMBER 27, 2022 | ALTA HOUSING; PALO ALTO, CA

**VAN METER
WILLIAMS
EX 2 POLLACK **



NOFA / 4/29 FORMAL SUBMITTAL



9/27 FORMAL SUBMITTAL



NOFA / 4/29 FORMAL SUBMITTAL



9/27 FORMAL SUBMITTAL

- NTS 

1020 TERRA BELLA - DESIGN CHANGES/DIAGRAMS | MASSING & COLOR PALETTE CHANGES

MOUNTAIN VIEW, CA | SEPTEMBER 27, 2022 | ALTA HOUSING; PALO ALTO, CA

**VAN METER
WILLIAMS
EX 3 POLLACK ^{LLP}**



PODIUM - NIGHT RENDER



STOOP - NIGHT RENDER



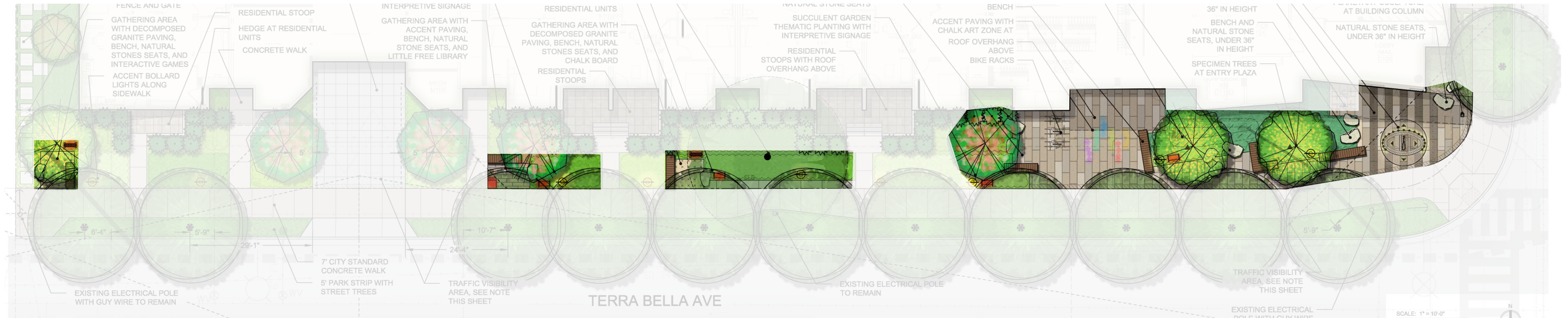
PLAZA - NIGHT RENDER

- NTS 

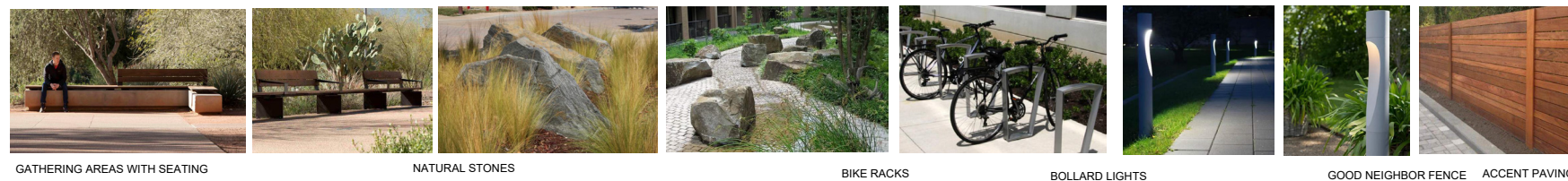
1020 TERRA BELLA - DESIGN CHANGES/DIAGRAMS | NEW COLOR PALETTE NIGHT RENDERINGS

MOUNTAIN VIEW, CA | SEPTEMBER 27, 2022 | ALTA HOUSING; PALO ALTO, CA

**VAN METER
WILLIAMS
EX 4 POLLACK **



SITE PRECEDENT IMAGERY

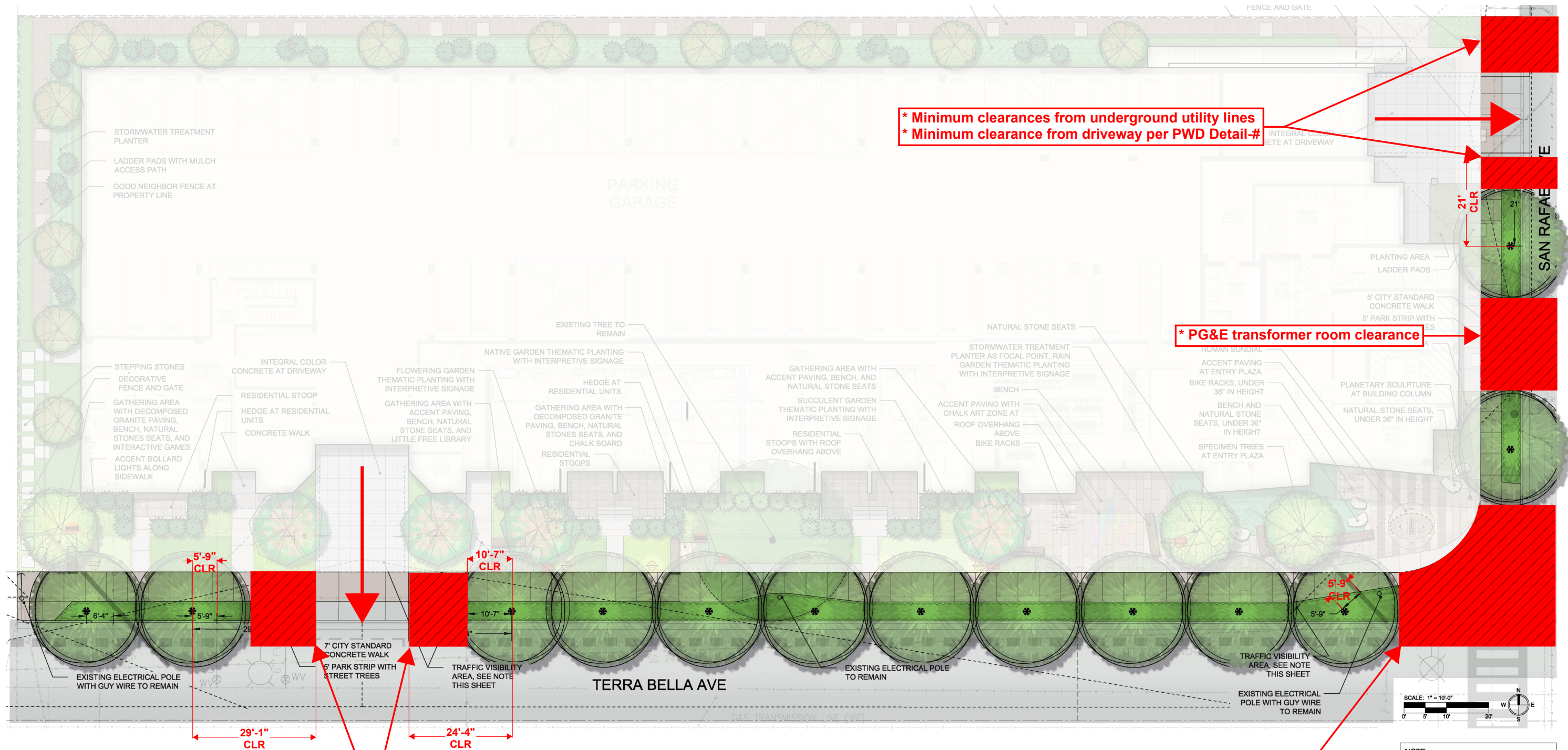


NTS

1020 TERRA BELLA - DESIGN CHANGES/DIAGRAMS | TERRA BELLA INTERACTIVE 'LEARN THROUGH PLAY' PROGRAM AREAS

MOUNTAIN VIEW, CA | SEPTEMBER 27, 2022 | ALTA HOUSING; PALO ALTO, CA

**VAN METER
WILLIAMS
EX 5 POLLACK**



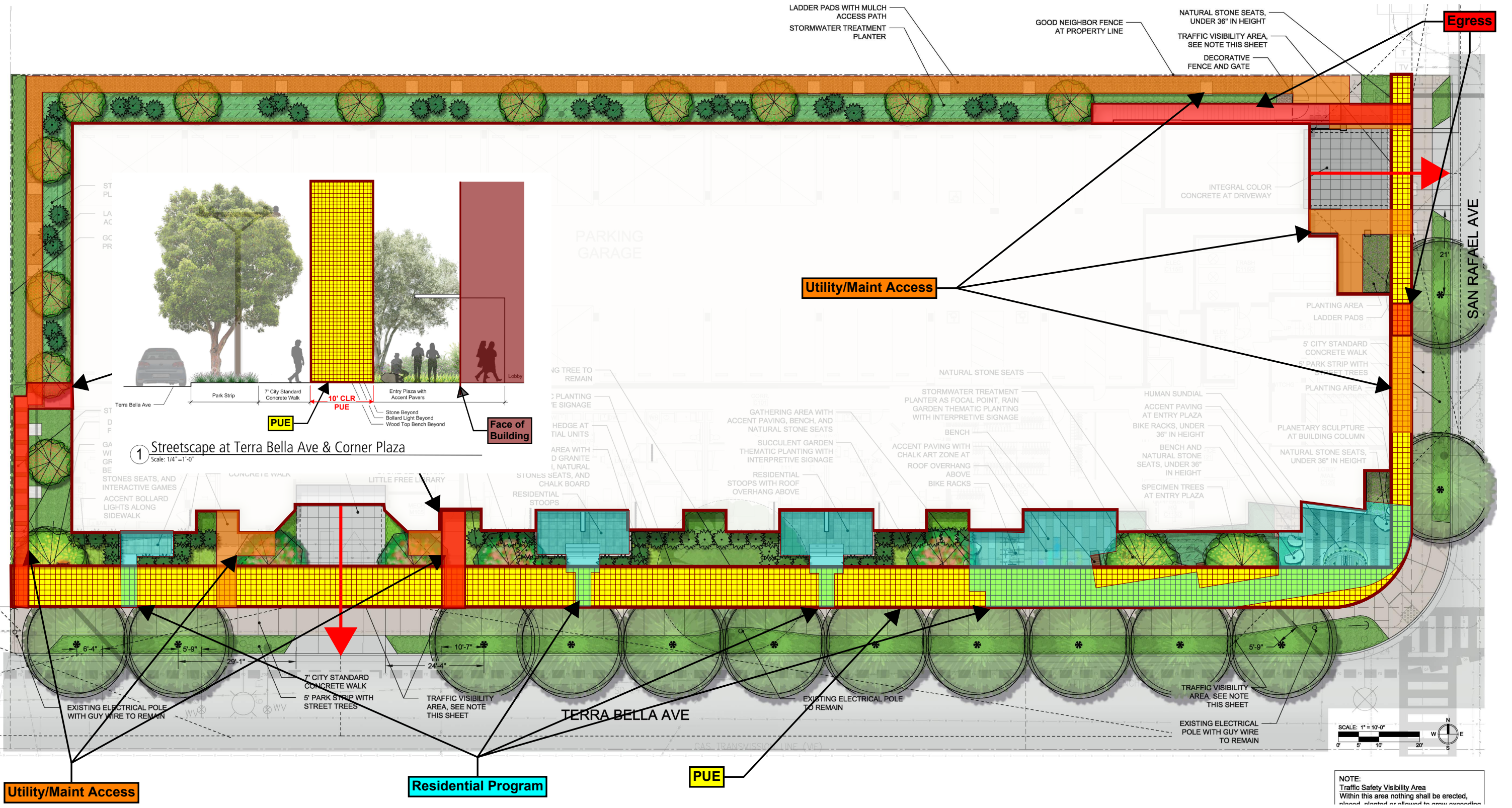
* Minimum clearances from underground utility lines
 * Minimum clearance from driveway per PWD Detail-#

* PG&E transformer room clearance

* Minimum clearances from underground utility lines
 * Minimum clearance from driveway per PWD Detail-#
 * Proposed streetlight and hydrant

* Minimum clearances from underground utility lines
 * Pedestrian corner crosswalk and ramp
 * Proposed streetlight and hydrant

NOTE:
 Traffic Safety Visibility Area
 Within this area nothing shall be erected, placed, planted or allowed to grow exceeding three feet in height, with the exception of trees with canopies no lower than six feet.

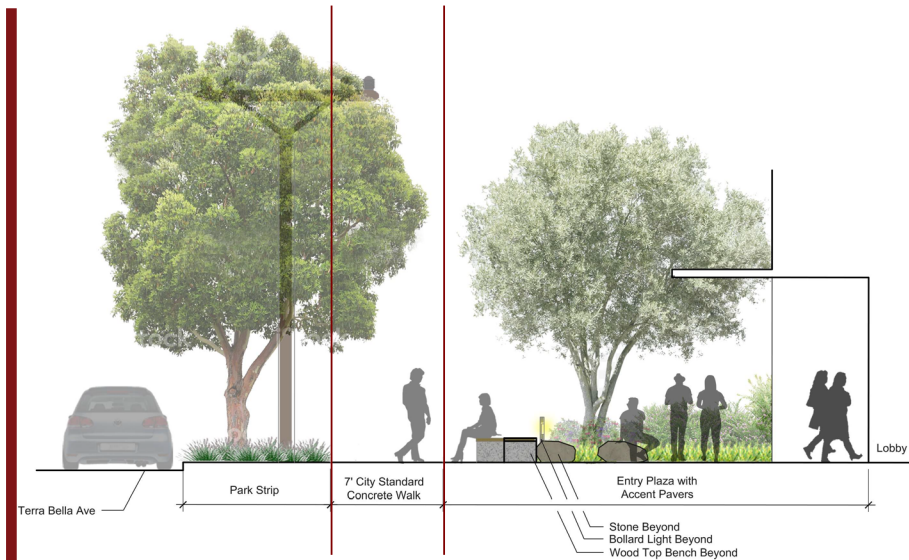


NOTE:
Traffic Safety Visibility Area
Within this area nothing shall be erected,
placed, planted or allowed to grow exceeding

NTS

1020 TERRA BELLA - DESIGN CHANGES/DIAGRAMS | ONSITE LANDSCAPING AREAS

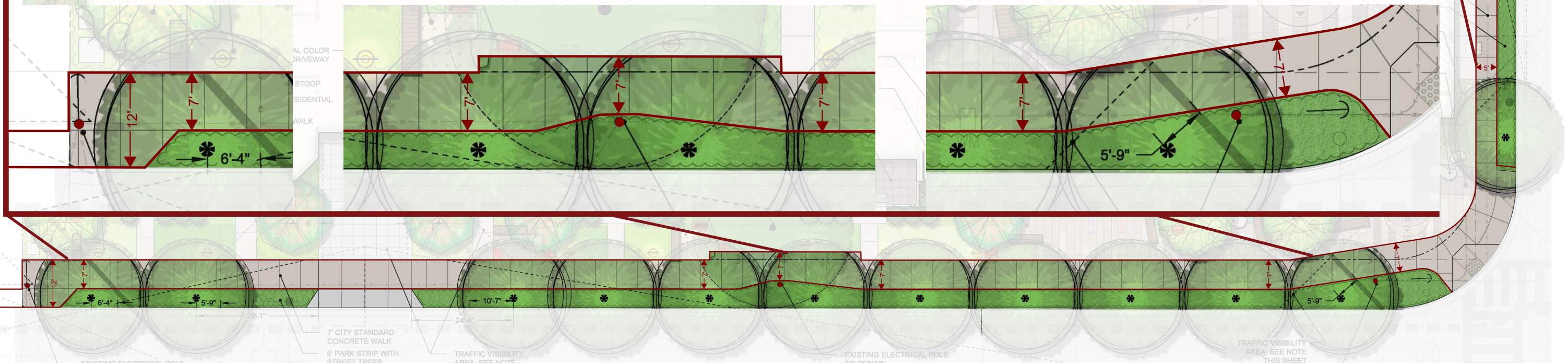
MOUNTAIN VIEW, CA | SEPTEMBER 27, 2022 | ALTA HOUSING; PALO ALTO, CA



1 Streetscape at Terra Bella Ave & Corner Plaza
Scale: 1/4"=1'-0"



2 Streetscape at San Rafael Ave
Scale: 1/4"=1'-0"



NTS

1020 TERRA BELLA - DESIGN CHANGES/DIAGRAMS | TERRA BELLA SIDEWALK

MOUNTAIN VIEW, CA | SEPTEMBER 27, 2022 | ALTA HOUSING; PALO ALTO, CA

**VAN METER
WILLIAMS
EX 8 POLLACK** LLP