

CITY OF MOUNTAIN VIEW  
RESOLUTION NO. 18788  
SERIES 2023

A RESOLUTION OF INTENTION OF THE CITY COUNCIL OF THE CITY OF MOUNTAIN VIEW  
TO VACATE STREET RIGHT-OF-WAY AND PUBLIC EASEMENTS WITHIN THE  
NORTH BAYSHORE MASTER PLAN BOUNDED BY  
CHARLESTON ROAD TO THE NORTH, STEVENS CREEK TO THE EAST,  
PLYMOUTH STREET AND SPACE PARK WAY TO THE SOUTH, AND HUFF AVENUE TO THE WEST

BE IT RESOLVED: by the City Council of the City of Mountain View that, pursuant to and in accordance with the provisions of Part 3 of Division 9 (Sections 8300 through 8374) of the Streets and Highways Code of the State of California (the Public Streets, Highways, and Service Easements Vacation Law), the City Council does hereby declare Council's intention to vacate street right-of-way and public easements within the North Bayshore Master Plan bounded by Charleston Road to the north, Stevens Creek to the east, Plymouth Street and Space Park Way to the south, and Huff Avenue to the west in the City of Mountain View. A description of the street and easements proposed to be vacated and an exhibit showing the areas to be vacated, a copy of which is on file in the City Clerk's Office of the City of Mountain View, are also attached hereto as Exhibits A and B and incorporated herein by reference; and be it

FURTHER RESOLVED: that notice is hereby given that at the hour of 6:30 p.m., or as soon thereafter as the matter can be heard, on Tuesday, June 13, 2023, a public hearing will be held by the City Council, in accordance with California Government Code Section 54953(e) as authorized by City Council resolution (available upon request to [city.clerk@mountainview.gov](mailto:city.clerk@mountainview.gov)), at the City Council Chambers (500 Castro Street, Second Floor, Mountain View, California, 94041), at which time and place all persons interested in or objecting to the proposed vacation may appear and be heard. Participation by video conference will also be available through the Zoom Webinar by visiting [mountainview.gov/meeting](https://mountainview.gov/meeting) and entering Webinar ID: 843 5126 7142, or as otherwise provided on the posted City Council Agenda; and be it

FURTHER RESOLVED: that the City Clerk is hereby directed to publish this Resolution at least 14 days prior to said hearing, pursuant to Section 8322 of the Streets and Highways Code of the State of California; and be it

FURTHER RESOLVED: that copies of this Resolution, serving as notice of vacation, shall be conspicuously posted by the Public Works Director along the line of the aforesaid street right-of-way and public easements proposed to be vacated at least 14 days before the date set for hearing. The notices shall be posted not more than 300' apart, but at least three of said notices are to be posted along the line of said public easements proposed to be vacated, pursuant to Section 8323 of the Streets and Highways Code of the State of California.

-----

The foregoing resolution was regularly introduced and adopted at a Regular Meeting of the City Council of the City of Mountain View, duly held on the 9th day of May 2023, by the following vote:

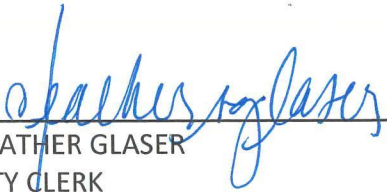
AYES: Councilmembers Abe-Koga, Kamei, Matichak, Ramirez, Ramos, Vice Mayor Showalter, and Mayor Hicks

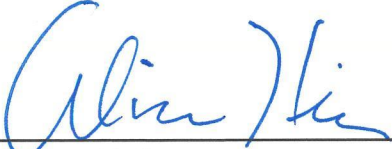
NOES: None

ABSENT: None

ATTEST:

APPROVED:

  
\_\_\_\_\_  
HEATHER GLASER  
CITY CLERK

  
\_\_\_\_\_  
ALISON HICKS  
MAYOR

Pursuant to Mountain View Charter § 709(b), I do hereby certify that the foregoing is an original or a correct copy of the Resolution passed and adopted by the City Council of the City of Mountain View at a Regular Meeting held on the 9th day of May 2023, by the foregoing vote.

  
\_\_\_\_\_  
City Clerk  
City of Mountain View

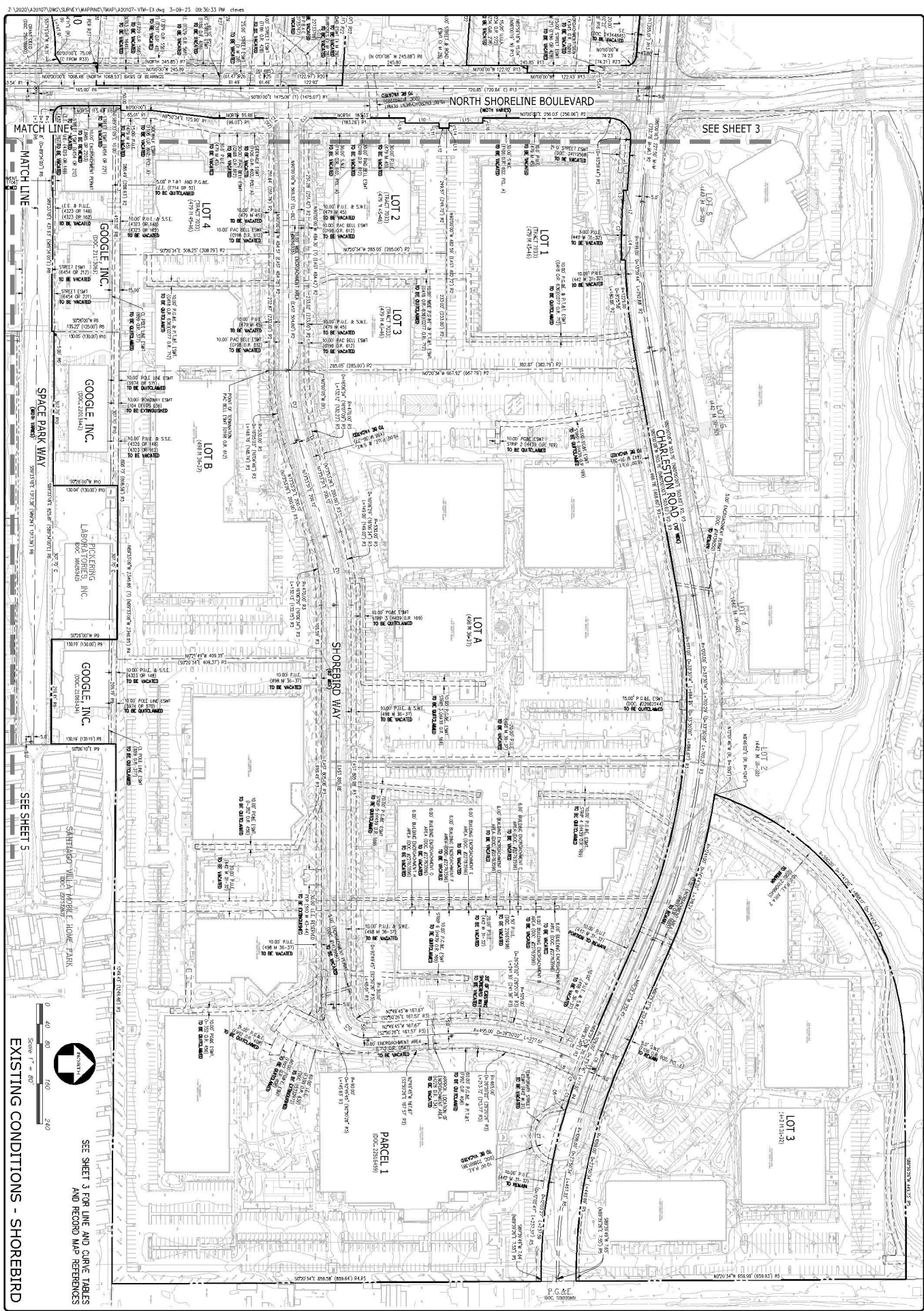
JC/LL/6/RESO  
996-05-09-23r-1

- Exhibits: A. Table of Street Right-of-Way and Public Easements to be Vacated
- B. Map of Street Right-of-Way and Public Easements to be Vacated

	Easement Title	Document Reference	In Favor of / For the Purpose of	Affected Project APN(s)	Property Addresses	Easement Area to be Vacated (V)
1	Street & Utility Easement	0222 O.R. 510	City of Mountain View	116-10-034	1400 SHORELINE BLVD	20,343
2	Sanitary Sewer Easement (S.S.E.)	0222 O.R. 515	City of Mountain View	116-10-034	1400 SHORELINE BLVD	927
3	Temporary Street Easement	442 M 31	City of Mountain View	116-11-030, 116-11-038, 116-11-039	<u>030</u> : 1225 CHARLESTON RD; 1245 CHARLESTON RD; 1215 CHARLESTON RD; 1295 CHARLESTON RD; 1230 SHOREBIRD WY; 1310 SHOREBIRD WY; 1350 SHOREBIRD WY <u>038</u> ; 1201 CHARLESTON RD; 1365 SHOREBIRD WY; 1345 SHOREBIRD WY; 1355 SHOREBIRD WY <u>039</u> ; 1395 CHARLESTON RD; 1397 CHARLESTON RD; 1399 CHARLESTON RD	3,724
4	Public Utility Easement (P.U.E.)	442 M 31	City of Mountain View	116-11-030, 116-11-038, 116-11-039	<u>030</u> : 1225 CHARLESTON RD; 1245 CHARLESTON RD; 1215 CHARLESTON RD; 1295 CHARLESTON RD; 1230 SHOREBIRD WY; 1310 SHOREBIRD WY; 1350 SHOREBIRD WY <u>038</u> ; 1201 CHARLESTON RD; 1365 SHOREBIRD WY; 1345 SHOREBIRD WY; 1355 SHOREBIRD WY <u>039</u> ; 1395 CHARLESTON RD; 1397 CHARLESTON RD; 1399 CHARLESTON RD	17,093
5	Public Utility Easement (P.U.E.)	479 M 45	City of Mountain View	116-11-021, 116-11-022, 116-11-024, 116-11-025, 116-11-039	<u>021</u> : 1397 SHOREBIRD WY <u>022</u> : 1383 SHOREBIRD WY <u>024</u> : 1380 SHOREBIRD WY <u>025</u> : 1390 SHOREBIRD WY	40,311
6	Sidewalk Easement (S.W.E.)	479 M 45	City of Mountain View	116-11-024, 116-11-025	<u>024</u> : 1380 SHOREBIRD WY <u>025</u> : 1390 SHOREBIRD WY	4,777
7	Public Utility Easement (P.U.E.)	498 M 36	City of Mountain View	116-11-028, 116-11-030, 116-11-038	<u>028</u> : 1371 SHOREBIRD WY; 1375 SHOREBIRD WY <u>030</u> : 1225 CHARLESTON RD; 1245 CHARLESTON RD; 1215 CHARLESTON RD; 1295 CHARLESTON RD; 1230 SHOREBIRD WY; 1310 SHOREBIRD WY; 1350 SHOREBIRD WY <u>038</u> : 1201 CHARLESTON RD; 1365 SHOREBIRD WY; 1345 SHOREBIRD WY; 1355 SHOREBIRD WY	12,450
8	Sidewalk Easement (S.W.E.)	498 M 36	City of Mountain View	116-11-028, 116-11-030, 116-11-038	<u>028</u> : 1371 SHOREBIRD WY; 1375 SHOREBIRD WY <u>030</u> : 1225 CHARLESTON RD; 1245 CHARLESTON RD; 1215 CHARLESTON RD; 1295 CHARLESTON RD; 1230 SHOREBIRD WY; 1310 SHOREBIRD WY; 1350 SHOREBIRD WY <u>038</u> : 1201 CHARLESTON RD; 1365 SHOREBIRD WY; 1345 SHOREBIRD WY; 1355 SHOREBIRD WY	7,648
9	Public Utility Easement (P.U.E.)	505 M 37	City of Mountain View	116-13-027	1555 PLYMOUTH ST	1,531
10	Street Easement (S.E.)	539 M 21	City of Mountain View	116-10-089	1824 SHORELINE BLVD; 1842 SHORELINE BLVD; 1455 CHARLESTON RD	1,775
11	Street Easement (S.E.)	557 M 1	City of Mountain View	116-10-102, 116-10-104, 116-10-105	<u>102</u> : 1585 CHARLESTON RD; 1565 CHARLESTON RD <u>104</u> : 1010 JOAQUIN RD <u>105</u> : 1545 CHARLESTON RD	10,254
12	Public Service Easement (P.S.E.)	557 M 1	City of Mountain View	116-10-102, 116-10-104, 116-10-105	<u>102</u> : 1585 CHARLESTON RD; 1565 CHARLESTON RD <u>104</u> : 1010 JOAQUIN RD <u>105</u> : 1545 CHARLESTON RD	6,461
13	Sidewalk Easement (S.W.E.)	557 M 1	City of Mountain View	116-10-102, 116-10-104, 116-10-105	<u>102</u> : 1585 CHARLESTON RD; 1565 CHARLESTON RD <u>104</u> : 1010 JOAQUIN RD <u>105</u> : 1545 CHARLESTON RD	8,234
14	Public Service Easement (P.S.E.)	566 M 36	City of Mountain View	116-10-111	1015 JOAQUIN STREET	13,607
15	Sidewalk Easement (S.W.E.)	566 M 36	City of Mountain View	116-10-111	1015 JOAQUIN STREET	23,535
16	Street Easement	566 M 36	City of Mountain View	116-10-111	1015 JOAQUIN STREET	11,399
17	Sidewalk Easement (S.W.E.)	570 M 32	City of Mountain View	116-10-095	1500 PLYMOUTH ST; 1550 PLYMOUTH ST	7,355
18	Public Service Easement (P.S.E.)	570 M 32	City of Mountain View	116-10-095	1500 PLYMOUTH ST; 1550 PLYMOUTH ST	20,659
19	Street Easement (S.E.)	570 M 32	City of Mountain View	116-10-095	1500 PLYMOUTH ST; 1550 PLYMOUTH ST	21,997
20	Street & Utility Easement	5726 O.R. 468	City of Mountain View	116-14-058	1599 N SHORELINE BLVD; 1601 N SHORELINE BLVD	8,994
21	Public Utility Easement (P.U.E.)	5818 O.R. 183	City of Mountain View	116-10-101	1435 PLYMOUTH ST; 1479 PLYMOUTH ST; 1477 PLYMOUTH ST	918
22	Street Easement (S.E.)	5818 O.R. 183	City of Mountain View	116-10-101	1435 PLYMOUTH ST; 1479 PLYMOUTH ST; 1477 PLYMOUTH ST	918
23	Public Service Easement (P.S.E.)	598 M 23	City of Mountain View	116-10-108	1053 JOAQUIN RD; 1055 JOAQUIN RD	7,669
24	Street Easement	598 M 23	City of Mountain View	116-10-108	1053 JOAQUIN RD; 1055 JOAQUIN RD	25,512
25	Sidewalk Easement (S.W.E.)	598 M 23	City of Mountain View	116-10-108	1053 JOAQUIN RD; 1055 JOAQUIN RD	25,512
26	Public Utility Easement (P.U.E.)	608 M 20	City of Mountain View	116-10-101	1435 PLYMOUTH ST; 1479 PLYMOUTH ST; 1477 PLYMOUTH ST	508
27	Sidewalk Easement (S.W.E.)	608 M 20	City of Mountain View	116-10-101	1435 PLYMOUTH ST; 1479 PLYMOUTH ST; 1477 PLYMOUTH ST	254
28	Street Easement (S.E.)	608 M 20	City of Mountain View	116-10-101	1435 PLYMOUTH ST; 1479 PLYMOUTH ST; 1477 PLYMOUTH ST	508
29	Street & Utility Easement	6153 O.R. 169	City of Mountain View	116-10-034	1400 SHORELINE BLVD	9,533
30	Public Utility Easement (P.U.E.)	6454 O.R. 212	City of Mountain View	Space Park Way		28,960
31	Street Easement (S.E.)	6454 O.R. 212	City of Mountain View	Space Park Way		13,176

32	Public Utility Easement (P.U.E.)	6454 O.R. 221	City of Mountain View	116-14-066	1675 SHORELINE BLVD; 1340 SPACE PARK WY	16,401
33	Street Easement (S.E.)	6454 O.R. 221	City of Mountain View	116-14-066	1675 SHORELINE BLVD; 1340 SPACE PARK WY	7,421
34	Street Easement	9874 O.R. 685	City of Mountain View	116-14-095	1230 PEAR AVE	3,946
35	Utilities Easement	9874 O.R. 685	City of Mountain View	116-14-095	1230 PEAR AVE	3,946
36	Landscape Easement (L.E.)	Doc. 15155449	City of Mountain View	116-10-088	1431 PLYMOUTH ST	996
37	Sidewalk Easement (S.W.E.)	Doc. 15155449	City of Mountain View	116-10-088	1431 PLYMOUTH ST	996
38	Sidewalk Easement (S.W.E.)	Doc. 19591791	City of Mountain View	116-10-107	1053 JOAQUIN RD; 1055 JOAQUIN RD	1,425
39	Public Service Easement (P.S.E.)	Doc. 19591792	City of Mountain View	116-10-107	1053 JOAQUIN RD; 1055 JOAQUIN RD	3,345
40	Street Easement (S.E.)	Doc. 19591792	City of Mountain View	116-10-107	1053 JOAQUIN RD; 1055 JOAQUIN RD	4,891
41	Permanent Irrevocable Surface Drainage & Storm Drain Easement	Doc. 22579004	Google	116-10-104, 116-10-105	104: 1010 JOAQUIN RD; 105: 1545 CHARLESTON RD	1,942
42	Public Utility Easement (U.E.)	Doc. 22665938	City of Mountain View	116-11-030	1225 CHARLESTON RD; 1245 CHARLESTON RD; 1215 CHARLESTON RD; 1295 CHARLESTON RD; 1230 SHOREBIRD WY; 1310 SHOREBIRD WY; 1350 SHOREBIRD WY	2,715
43	Permanent Irrevocable Easement for Surface Drainage and Storm Drain Purposes (S.D.E.)	Doc. 22733766	Google	116-10-077, 116-10-078, 116-10-079, 116-10-080	077: 1804 N SHORELINE BLVD 078: 1764 SHORELINE BLVD 079: 1758 SHORELINE BLVD 080: 1708 SHORELINE BLVD; 1742 SHORELINE BLVD	15,441
44	Permanent Irrevocable Easement for Private Pedestrian and Bicycle Access (P.P.B.A.E.)	Doc. 22733767	Google	116-10-077, 116-10-078, 116-10-079, 116-10-080, 116-10-097, 116-10-102, 116-10-104, 116-10-105, 116-10-111	077: 1804 N SHORELINE BLVD 078: 1764 SHORELINE BLVD 079: 1758 SHORELINE BLVD 080: 1708 SHORELINE BLVD; 1742 SHORELINE BLVD 097: APN NOT FOUND 102: 1585 CHARLESTON RD; 1565 CHARLESTON RD 104: 1010 JOAQUIN RD 105: 1545 CHARLESTON RD	32,752
45	Public Access Easement (P.A.E.)	Doc. 22869138	City of Mountain View	116-11-038	1201 CHARLESTON RD; 1365 SHOREBIRD WY; 1345 SHOREBIRD WY; 1355 SHOREBIRD WY	2,369
46	Public Access Easement (P.A.E.)	Doc. 23506640	City of Mountain View	116-11-012	1200 CHARLESTON RD; 1230 CHARLESTON RD; 1220 CHARLESTON RD; 1206 CHARLESTON RD; 1210 CHARLESTON RD	12,139
47	Street Easement	Doc. 24119568	City of Mountain View	116-11-039	1395 CHARLESTON RD; 1397 CHARLESTON RD; 1399 CHARLESTON RD	1,943
48	Street Easement (S.E.)	Doc. 24344845	City of Mountain View	116-10-084	1890 N SHORELINE BLVD	132
49	Sidewalk Easement (S.W.E.)	F106 O.R. 602	City of Mountain View	116-11-021, 116-11-025, 116-11-039	021: 1397 SHOREBIRD WY 025: 1390 SHOREBIRD WY 039: 1395 CHARLESTON RD; 1397 CHARLESTON RD; 1399 CHARLESTON RD	17,822
50	Roadway Purposes	F186 O.R. 428	City of Mountain View	116-10-084, 116-10-89, 116-10-077, 116-10-078, 116-10-079, 116-10-109, 116-10-088	SHORELINE BLVD	3,687
51	Sidewalk Easement (S.W.E.)	F329 O.R. 556	City of Mountain View	116-10-080	1708 SHORELINE BLVD; 1742 SHORELINE BLVD	13,516
52	Utility Easement (U.E.)	F329 O.R. 556	City of Mountain View	116-10-080	1708 SHORELINE BLVD; 1742 SHORELINE BLVD	2,451
53	Public Utility Easement (P.U.E.)	F329 O.R. 556	City of Mountain View	116-10-080	1708 SHORELINE BLVD; 1742 SHORELINE BLVD	2,451
54	Sidewalk Easement (S.W.E.)	F329 O.R. 561	City of Mountain View	116-10-080	1708 SHORELINE BLVD; 1742 SHORELINE BLVD	10,705
55	Utility Easement (U.E.)	F329 O.R. 561	City of Mountain View	116-10-080	1708 SHORELINE BLVD; 1742 SHORELINE BLVD	10,705
56	Public Utility Easement (P.U.E.)	H101 O.R. 353	City of Mountain View	116-13-027	1555 PLYMOUTH ST	1,531
57	Public Utility Easement (P.U.E.)	H525 O.R. 555	City of Mountain View	116-13-027	1555 PLYMOUTH ST	1,531
58	Public Utility Easement (P.U.E.)	H770 OR 44	City of Mountain View	116-13-027	1555 PLYMOUTH ST	2,963
59	Public Utility Easement (P.U.E.)	J895 O.R. 732	City of Mountain View	116-10-101	1435 PLYMOUTH ST; 1479 PLYMOUTH ST; 1477 PLYMOUTH ST	1,120
60	Sidewalk Easement (S.W.E.)	J895 O.R. 732	City of Mountain View	116-10-101	1435 PLYMOUTH ST; 1479 PLYMOUTH ST; 1477 PLYMOUTH ST	1,120
61	Sidewalk Easement (S.W.E.)	K103 O.R. 1167	City of Mountain View	116-10-107	1053 JOAQUIN RD; 1055 JOAQUIN RD	359
62	Public Utility Easement (P.U.E.)	K849 O.R. 113	City of Mountain View	116-10-095	1500 PLYMOUTH ST; 1550 PLYMOUTH ST	7,669
63	Public Service Easement (P.S.E.)	M982 O.R. 1018	City of Mountain View	116-10-102 AND 105	1545 CHARLESTON RD; 1565 CHARLESTON RD	2,520
64	Sidewalk Easement (S.W.E.)	M982 O.R. 1018	City of Mountain View	116-10-102 AND 105	1545 CHARLESTON RD; 1565 CHARLESTON RD	1,774
65	Street Easement (S.E.)	N763 O.R. 1641	City of Mountain View	116-10-080	1708 SHORELINE BLVD; 1742 SHORELINE BLVD	1,189

66	Street Easement	W M 24	City of Mountain View	116-14-028	1220 PEAR AVE	4,502
67	Street and Road Easement	X M 28	City of Mountain View	116-10-077,116-10-078, 116-10-079	<del>077</del> ; 1804 N SHORELINE BLVD <del>078</del> ; 1764 SHORELINE BLVD <del>079</del> ; 1758 SHORELINE BLVD <del>090</del> ; 1808 SHORELINE BLVD; 1806 SHORELINE BLVD	34,410
68	Street Improvement Assessment District Agreement	F397 O.R. 42	City of Mountain View	116-10-080	1708 SHORELINE BLVD; 1742 SHORELINE BLVD	2,451
69	Assessment Agreement for Underground Electric Utilities	F397 O.R. 48	City of Mountain View	116-10-080	1708 SHORELINE BLVD; 1742 SHORELINE BLVD	2,451
70	Future Assessment Agreement [To be terminated with Street Easement]	9871 O.R. 127	City of Mountain View	116-14-095	1230 PEAR AVE	3,946
71	Street Improvement Agreement [To be terminated with Street Easement]	9871 O.R. 135	City of Mountain View	116-14-095	1230 PEAR AVE	3,946
72	Underground Utility Agreement (Assessment District)	J234 O.R. 272	City of Mountain View	116-10-089	1824 SHORELINE BLVD; 1842 SHORELINE BLVD; 1455 CHARLESTON RD	9,210
73	Street Improvement Assessment District Agreement	J234 O.R. 278	City of Mountain View	116-10-089	1824 SHORELINE BLVD; 1842 SHORELINE BLVD; 1455 CHARLESTON RD	9,210
74	Flood & Drainage Easement	Doc. 23012472	State of California	116-13-038	SHORELINE BLVD	1,789
75	Storm Drainage Easement	Doc. 23012472	State of California	116-13-038	SHORELINE BLVD	1,789
76	Street Easement	479 M 45	City of Mountain View	Shorebird Way	Shorebird Way	109,534
77	Street Easement	498 M 36	City of Mountain View	Shorebird Way	Shorebird Way	30,436



**NORTH BAYSHORE MASTER PLAN**  
**VESTING TENTATIVE MAP**

FOR  
**GOOGLE LLC**

MOUNTAIN VIEW, CALIFORNIA

**KIER+WRIGHT**

3250 Scott Boulevard, Building 22  
Santa Clara, California 95051  
Phone: (408) 727-6665  
www.kierwright.com

NO.	REVISION	BY	NO.	REVISION

DATE: MAR, 2023  
SCALE: AS SHOWN  
DRAWN BY: EST  
CHECKED BY: CT  
JOB NO.: 42037

**SHEET 6**

OF 16 SHEETS

EXISTING CONDITIONS - SHOREBIRD

SEE SHEET 3 FOR LINE AND CURVE TABLES AND RECORD MAP REFERENCES