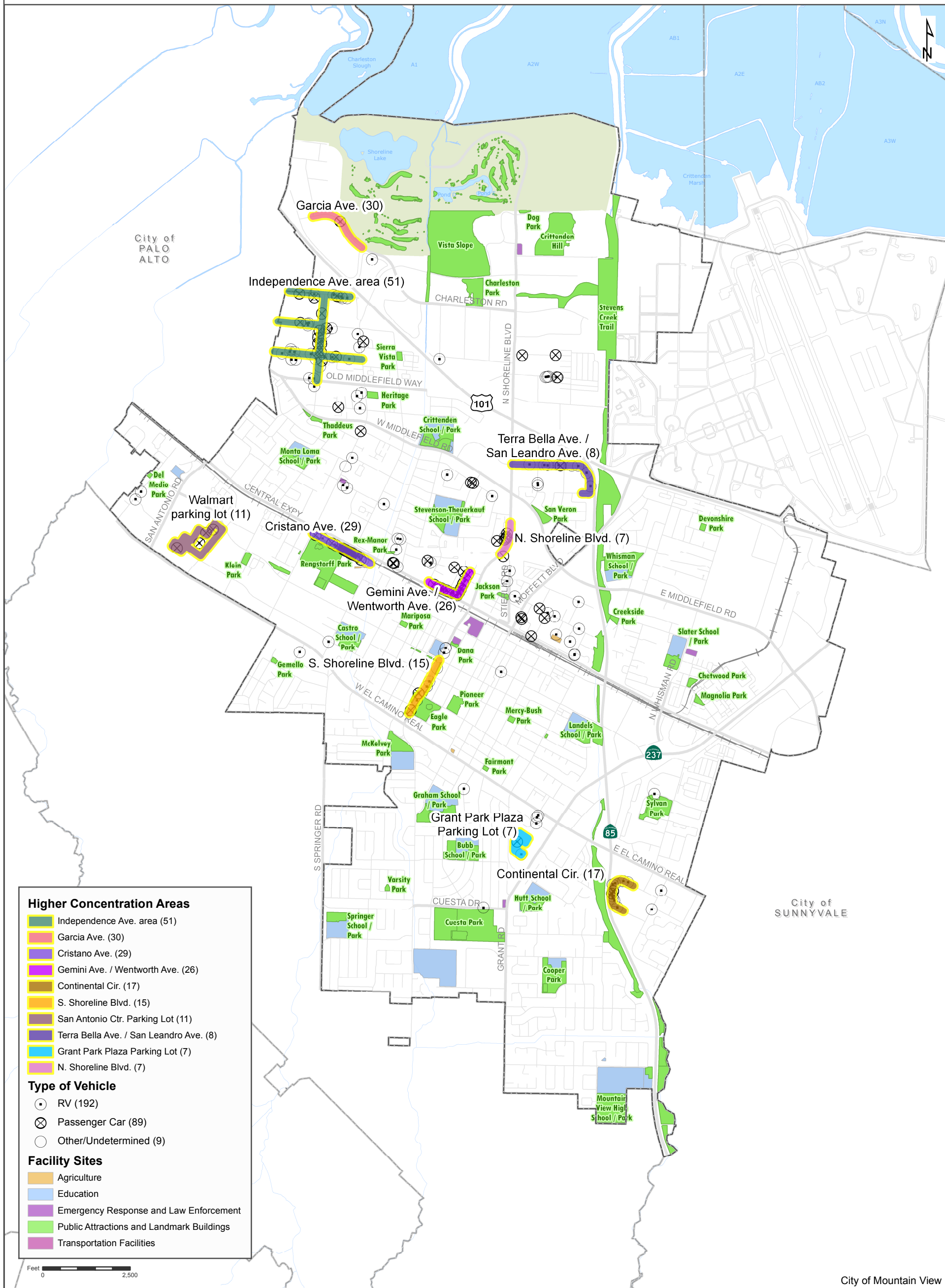


Map of Locations with Residents Living in Vehicles

Counts conducted December 2018 – Overlay with Facilities



For information only. The City of Mountain View does not warrant the accuracy of the information contained herein.
 \mntview\data\CityGIS\Departments\IT\Users\E\Savage\Inhabited Vehicle Census 2018\Maps\VC 2018 02.26.2.mxd, last saved on 2/26/2019 at 2:56 PM



Higher Concentration Areas

- Independence Ave. area (51)
- Garcia Ave. (30)
- Cristiano Ave. (29)
- Gemini Ave. / Wentworth Ave. (26)
- Continental Cir. (17)
- S. Shoreline Blvd. (15)
- San Antonio Ctr. Parking Lot (11)
- Terra Bella Ave. / San Leandro Ave. (8)
- Grant Park Plaza Parking Lot (7)
- N. Shoreline Blvd. (7)

Type of Vehicle

- RV (192)
- X Passenger Car (89)
- Other/Undetermined (9)

Facility Sites

- Agriculture
- Education
- Emergency Response and Law Enforcement
- Public Attractions and Landmark Buildings
- Transportation Facilities

Feet 0 2,500

City of Mountain View

58 associated vehicles were also counted that showed no signs of living, but appear to reflect dual vehicle units. These passenger vehicles exhibited signs of being associated with the same owner/user of an inhabited RV by parking configuration, etc.

Approximately 20% of the counted vehicles were found at least 50 feet away from the nearest road centerline.