

ONE / M2 ELEVATION



ORIGINAL

The glazing sizes have been brought over from M1 creating a reference to the adjacent building but articulating them differently as they are inserted into the ACM panels.

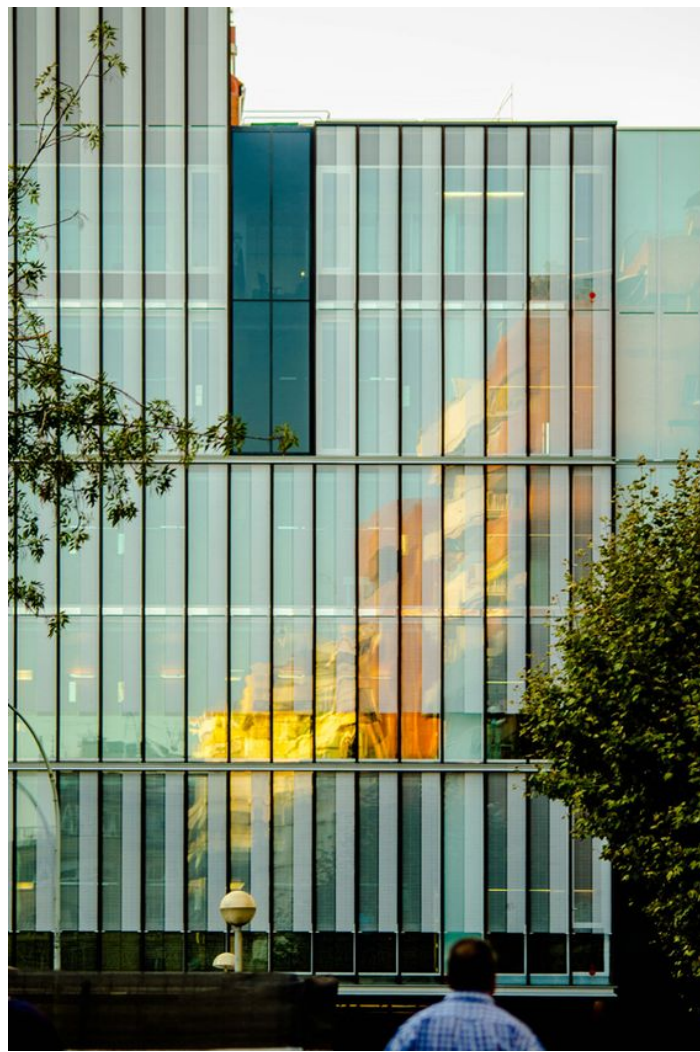
A recessed ribbon window with expressed structure lends unique identity to M2 while representing a bridging step from the M1 punched openings to the M3 curtain wall expression

The wood entry portal has been mirrored so that there is a defined rhythm to the entry portal direction common to M1 and M3

The metal cladding extends to grade creating a two tone composition of metal and wood. The 3' wide ACM panels, which differ from the smaller scale metal cladding on M1 and M3, are jointed to express the horizontal datum line and to introduce scale and detail while referencing M1



ALTO3



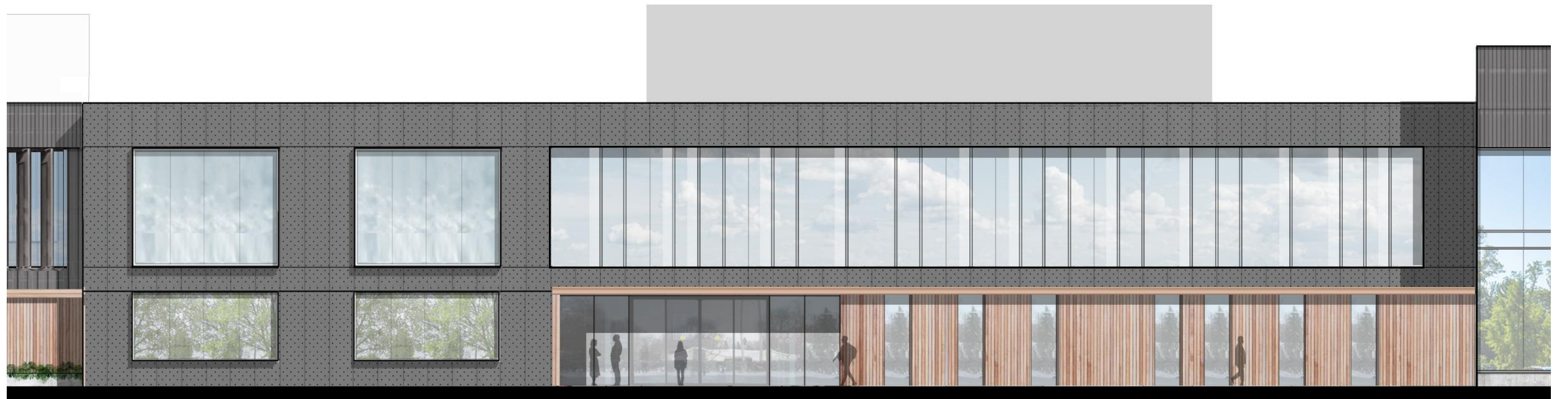
Texture defining frit pattern



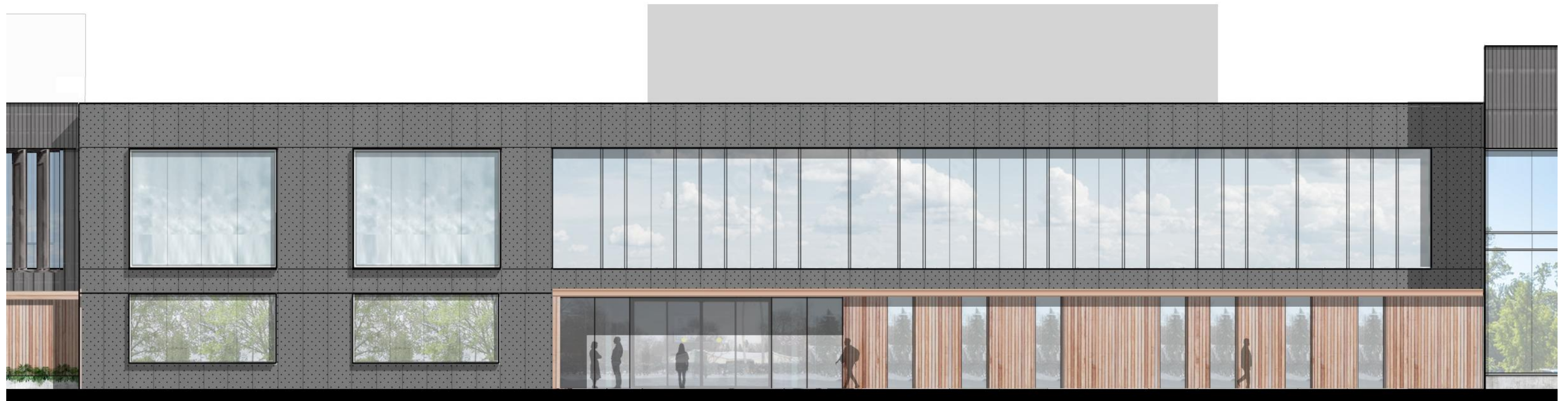
Small 4" mullion cap fins



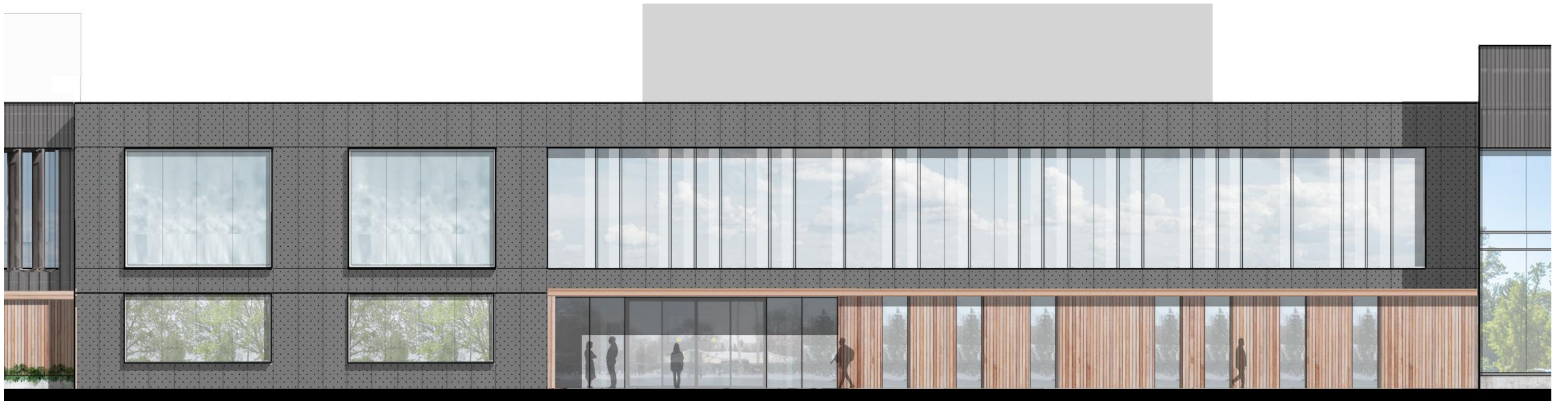
Minimal recess, clean and tight glass skin



Version 01 - random mix of 4" fins and frit stripes



Version 02 - random mix of 4" fins, no frit stripes



Version 03 - random mix of 4" fins, pair each fin with frit strip