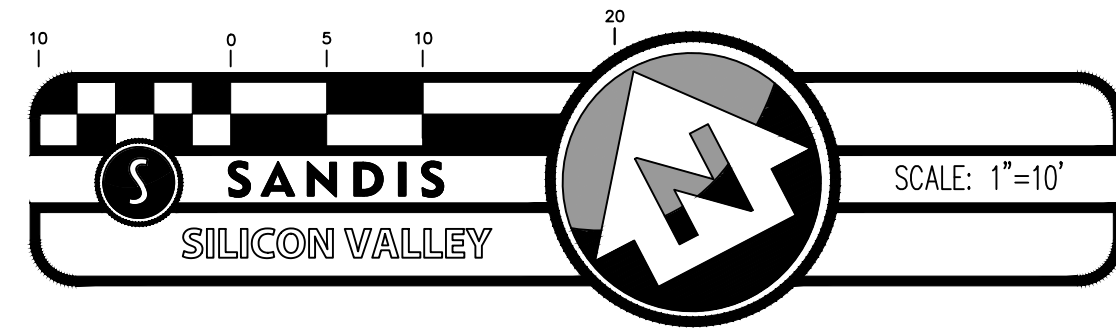


**SURVEY NOTES**

1. ALL DISTANCES AND DIMENSIONS ARE SHOWN IN FEET AND DECIMALS THEREOF.
2. DATES OF FIELD SURVEY: 05/10/2019



**BASIS OF BEARINGS**

THE BEARING OF NORTH 26°17'19" EAST TAKEN ON THE CENTERLINE OF CASTRO STREET AS SHOWN ON THAT CERTAIN RECORD OF SURVEY FILED FOR RECORD ON JULY 9, 1991, IN BOOK 627 OF MAPS, AT PAGE 35 THRU 37, SANTA CLARA COUNTY RECORDS WAS TAKEN AS THE BASIS FOR ALL BEARINGS SHOWN HEREON.

**LEGEND**

- EXISTING BOUNDARY LINE
- BUILDING LINE
- BUILDING OVERHANG
- CURB LINE
- FENCE LINE
- G GAS LINE
- CMN COMMUNICATION LINE
- E UNDERGROUND ELECTRIC LINE
- W WATER LINE
- SS SANITARY SEWER LINE
- SD STORM DRAIN LINE

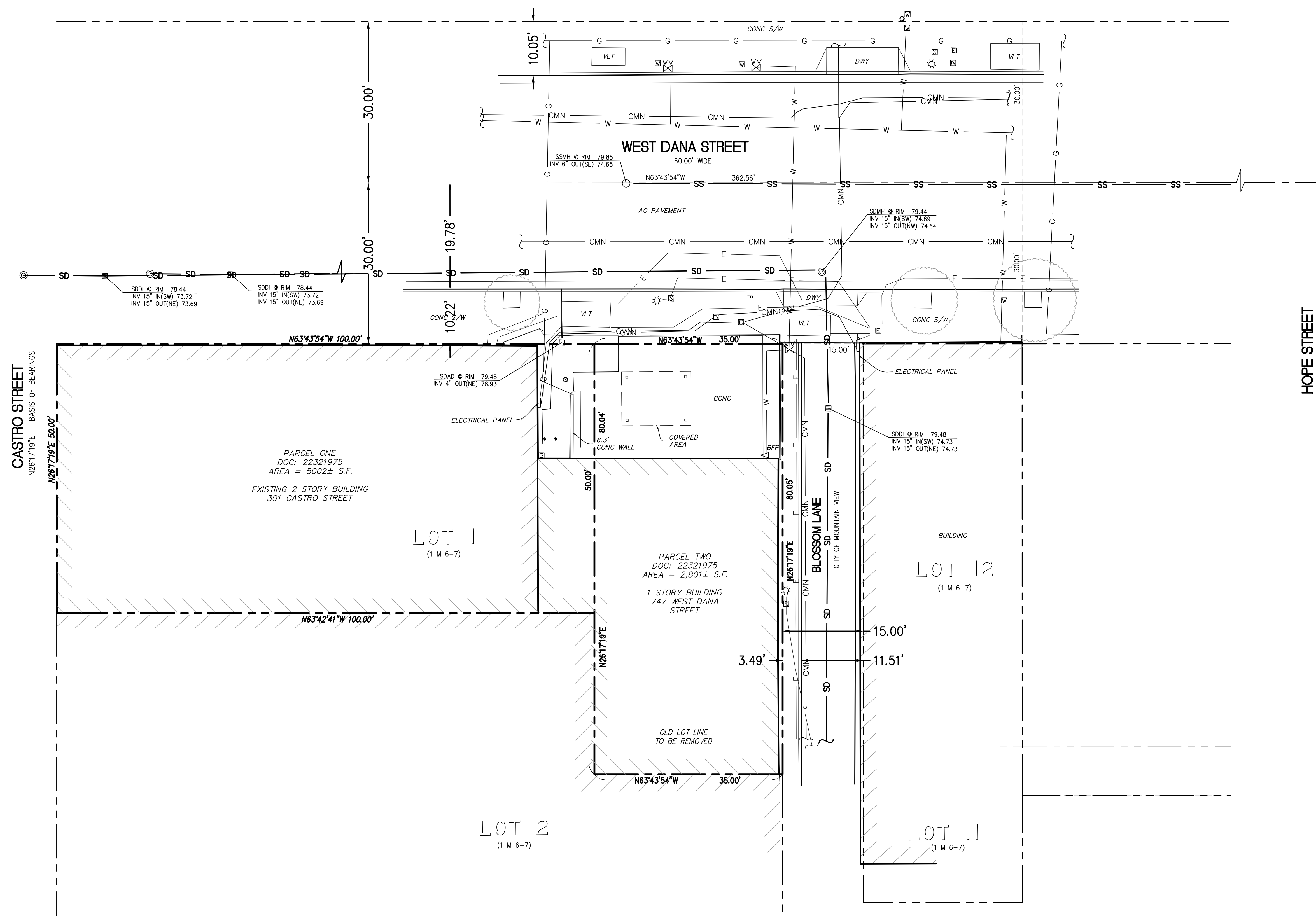


VICINITY MAP  
N.T.S.

**SYMBOLS & ABBREVIATIONS**

- |         |                          |   |                          |
|---------|--------------------------|---|--------------------------|
| AD      | AREA DRAIN               | □ | AREA DRAIN               |
| BFP     | BACK FLOW PREVENTOR      | ● | BENCHMARK                |
| BM      | BENCHMARK                | ○ | BOLLARD                  |
| BW      | BACK OF WALK             | □ | CABLE TV PULLBOX         |
| CATV    | CABLE TV PULLBOX         | □ | CATCH BASIN              |
| CB      | CATCH BASIN              | □ | COMMUNICATION PULLBOX    |
| COM-PB  | COMMUNICATION PULLBOX    | □ | CONCRETE                 |
| DI      | DRAIN INLET              | □ | CONC                     |
| DWY     | DRIVEWAY                 | □ | EDGE OF PAVEMENT         |
| EP      | EDGE OF PAVEMENT         | □ | ELECTRIC PULLBOX         |
| EPB     | ELECTRIC PULLBOX         | □ | BUILDING FINISHED FLOOR  |
| FF      | BUILDING FINISHED FLOOR  | □ | FINISHED GRADE AT DOOR   |
| FG8DOOR | FINISHED GRADE AT DOOR   | □ | FLOW LINE                |
| FL      | FLOW LINE                | □ | FOUND STANDARD MONUMENT  |
| FND-MON | FOUND STANDARD MONUMENT  | □ | GRADE BREAK              |
| GB      | GRADE BREAK              | □ | GAS METER                |
| GM      | GAS METER                | □ | LIP OF GUTTER            |
| LIP     | LIP OF GUTTER            | □ | PAVEMENT                 |
| P       | PAVEMENT                 | □ | STORM DRAIN CLEANOUT     |
| SDCO    | STORM DRAIN CLEANOUT     | □ | STORM DRAIN MANHOLE      |
| SDMH    | STORM DRAIN MANHOLE      | □ | SIGN                     |
| SIGN    | SIGN                     | □ | SANITARY CLEANOUT        |
| SSCO    | SANITARY CLEANOUT        | □ | SANITARY MANHOLE         |
| SSMH    | SANITARY MANHOLE         | □ | STREET LIGHT LAMP NO ARM |
| STL     | STREET LIGHT LAMP NO ARM | □ | STREET LIGHT PULLBOX     |
| STPB    | STREET LIGHT PULLBOX     | □ | SIDEWALK                 |
| SW      | SIDEWALK                 | □ | TOP OF CURB              |
| TC      | TOP OF CURB              | □ | TREE SYMBOL              |
| TREE    | TREE SYMBOL              | □ | ELEC VAULT               |
| VLT     | ELEC VAULT               | □ | WATER METER              |
| WM      | WATER METER              | □ | WATER VALVE              |
| WV      | WATER VALVE              | □ |                          |

NO PART OF THIS DOCUMENT MAY BE REPRODUCED IN ANY FORM INCLUDING PHOTOCOPY, RECORDING OR ANY INFORMATION RETRIEVABLE AND STORAGE SYSTEM, WITHOUT PERMISSION IN WRITING FROM SANDIS.



CASTRO STREET  
N26°17'19"E - BASIS OF BEARINGS

HOPE STREET

**SANDIS** CIVIL ENGINEERS SURVEYORS PLANNERS  
1700 Winchester Boulevard, Campbell, CA 95008 | P. 408.636.0900 | F. 408.636.0999 | www.sandis.net  
SILICON VALLEY TRI-VALLEY CENTRAL VALLEY SACRAMENTO EAST BAY/SF

DATE	10/20/2021
SCALE	1" = 10'
DRAWN BY	RH
APPROVED BY	DB
DRAWING NO.	219167

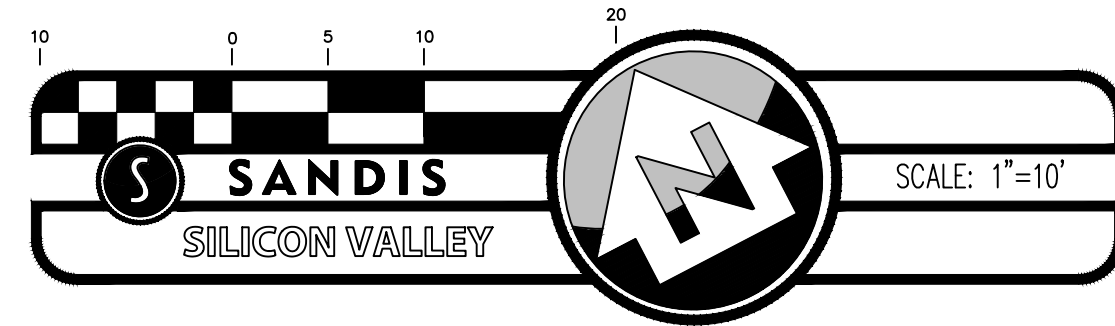
No.	REVISION/ISSUE	DATE	BY

**EXISTING LOT CONFIGURATIONS**

SITE PLAN FOR LOT LINE ADJUSTMENT  
747 WEST DANA STREET AND  
301 CASTRO STREET  
MOUNTAIN VIEW CALIFORNIA

**SURVEY NOTES**

1. ALL DISTANCES AND DIMENSIONS ARE SHOWN IN FEET AND DECIMALS THEREOF.
2. DATES OF FIELD SURVEY: 05/10/2019

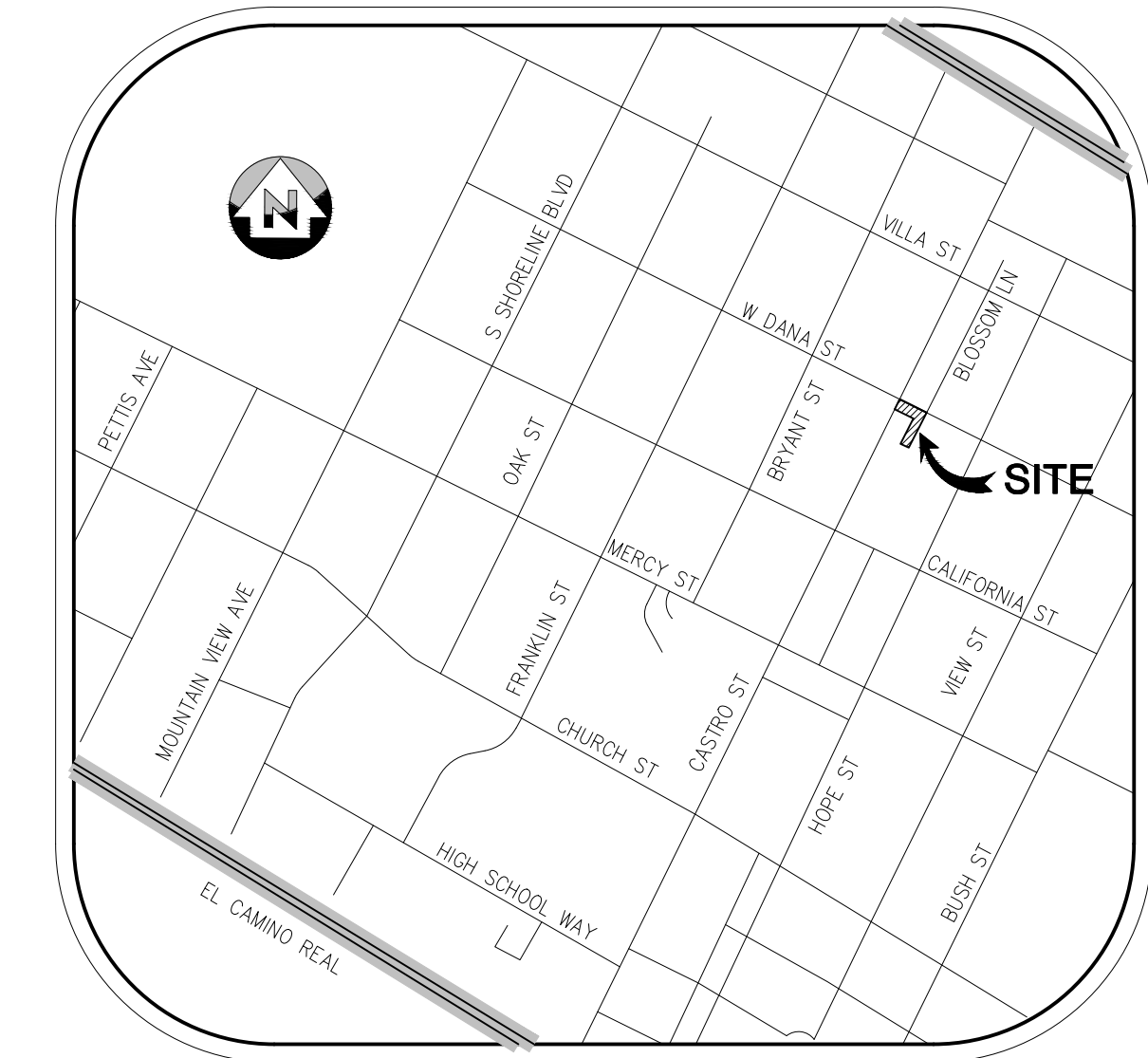


**BASIS OF BEARINGS**

THE BEARING OF NORTH 26°17'19" EAST TAKEN ON THE CENTERLINE OF CASTRO STREET AS SHOWN ON THAT CERTAIN RECORD OF SURVEY FILED FOR RECORD ON JULY 3, 1991, IN BOOK 627 OF MAPS, AT PAGE 35 THRU 37, SANTA CLARA COUNTY RECORDS WAS TAKEN AS THE BASIS FOR ALL BEARINGS SHOWN HEREON.

**LEGEND**

- NEW BOUNDARY LINE
  - - - - - LOT LINE TO BE REMOVED
  - ▨ BUILDING LINE
  - ▧ BUILDING OVERHANG
  - CURB LINE
  - - - - - FENCE LINE
  - - - - - GAS LINE
  - - - - - COMMUNICATION LINE
  - - - - - UNDERGROUND ELECTRIC LINE
  - - - - - WATER LINE
  - - - - - SANITARY SEWER LINE
  - - - - - STORM DRAIN LINE
- POINT, ELEVATION AND DESCRIPTION  
 CONTOURS (1-FT INTERVALS)  
 TREE (DIAMETER SIZE IN INCHES)

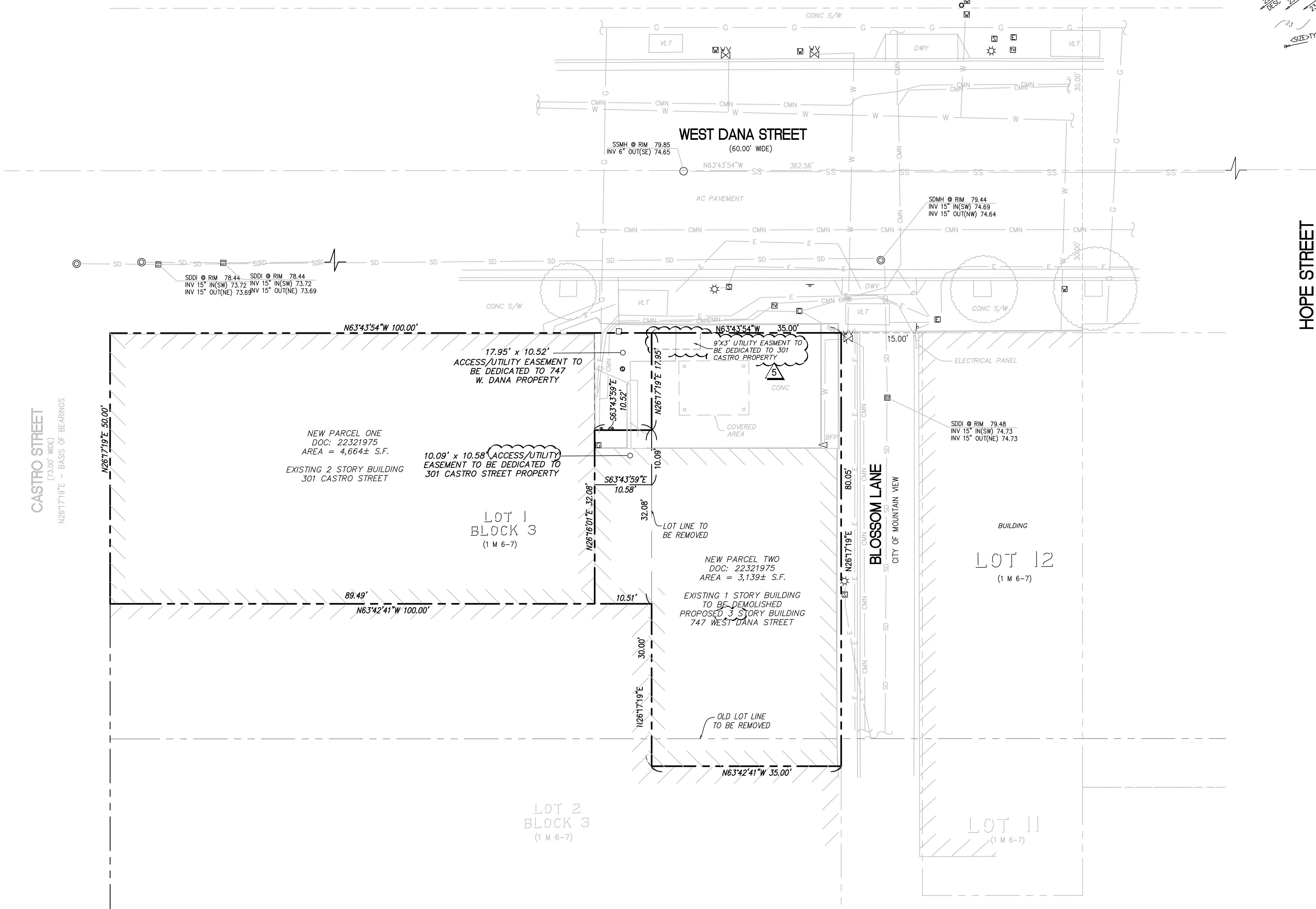


VICINITY MAP  
N.T.S.

**SYMBOLS & ABBREVIATIONS**

- AD AREA DRAIN
- BFP BACK FLOW PREVENTOR
- BM BENCHMARK
- BOL BOLLARD
- BW BACK OF WALK
- CATV CABLE TV PULLBOX
- CB CATCH BASIN
- COM-PB COMMUNICATION PULLBOX
- CONC CONCRETE
- DI DRAIN INLET
- DWY DRIVEWAY
- EP EDGE OF PAVEMENT
- EPB ELECTRIC PULLBOX
- FF BUILDING FINISHED FLOOR
- FO8DOOR FLOW LINE
- FL FLOW LINE
- FND-MON FOUND STANDARD MONUMENT
- GB GRADE BREAK
- GM GAS METER
- LIP LIP OF CUTTER
- P PAVEMENT
- SDCO STORM DRAIN CLEANOUT
- SDMH STORM DRAIN MANHOLE
- SGN SIGN
- SSCO SANITARY CLEANOUT
- SSMH SANITARY MANHOLE
- STL STREET LIGHT LAMP NO ARM
- STPB STREET LIGHT PULLBOX
- SW SIDEWALK
- TC TOP OF CURB
- TREE TREE SYMBOL
- VLT ELEC VALVE
- WM WATER METER
- WV WATER VALVE

NO PART OF THIS DOCUMENT MAY BE REPRODUCED IN ANY FORM INCLUDING PHOTOCOPY, RECORDING OR ANY INFORMATION RETRIEVABLE AND STORAGE SYSTEM, WITHOUT PERMISSION IN WRITING FROM SANDIS.



CASTRO STREET  
(73.00' WIDE)  
N26°17'19" E - BASIS OF BEARINGS

HOPE STREET

**SANDIS** CIVIL ENGINEERS SURVEYORS PLANNERS  
 1700 Winchester Boulevard, Campbell, CA 95008 | P. 408.636.0900 | F. 408.636.0999 | www.sandis.net  
 SILICON VALLEY TRI-VALLEY CENTRAL VALLEY SACRAMENTO EAST BAY/SF

DATE	10/20/2021
SCALE	1" = 10'
DRAWN BY	RH
APPROVED BY	DB
DRAWING NO.	219167

No.	REVISION/ISSUE	DATE	BY
1	EASEMENTS ADDED	1-14-21	DWB
5	EASEMENTS ADDED	10-20-21	NL

**PROPOSED LOT CONFIGURATIONS**

**SITE PLAN FOR LOT LINE ADJUSTMENT  
 747 WEST DANA STREET AND  
 301 CASTRO STREET  
 MOUNTAIN VIEW CALIFORNIA**

SHEET  
**2**  
OF 2 SHEETS  
Copyright © 2019 by Sandis

File: S:\219167\4 ENGINEERING\11 SENT\03\_Planning Docs\2021-10-20\219167 LLA Proposed.dwg Date: Oct 20, 2021 - 3:35pm, nle