

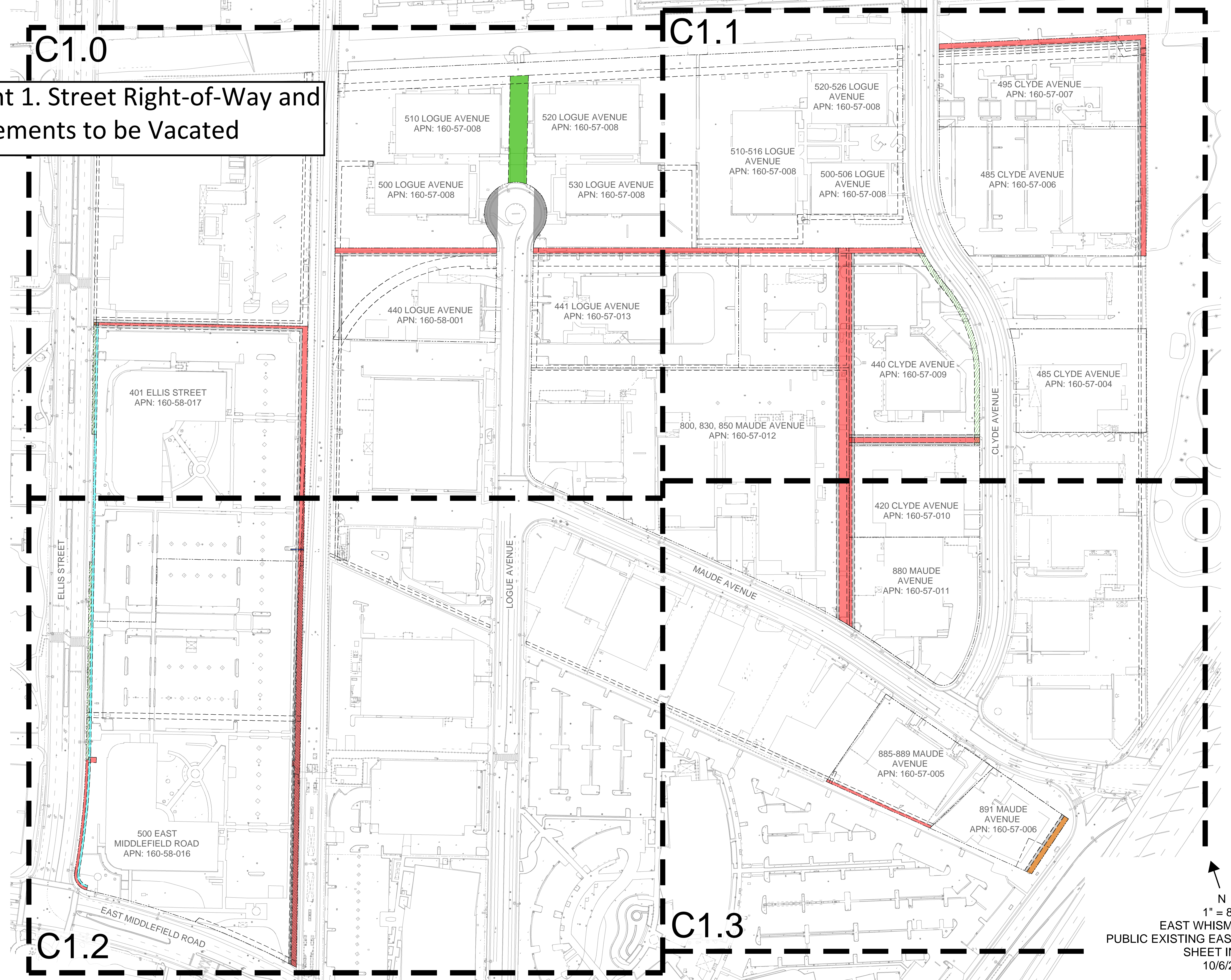
Attachment 1. Street Right-of-Way and Public Easements to be Vacated

C1.0

C1.1

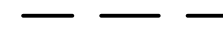
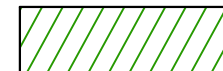
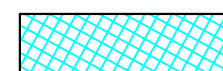








C1.2

C1.3

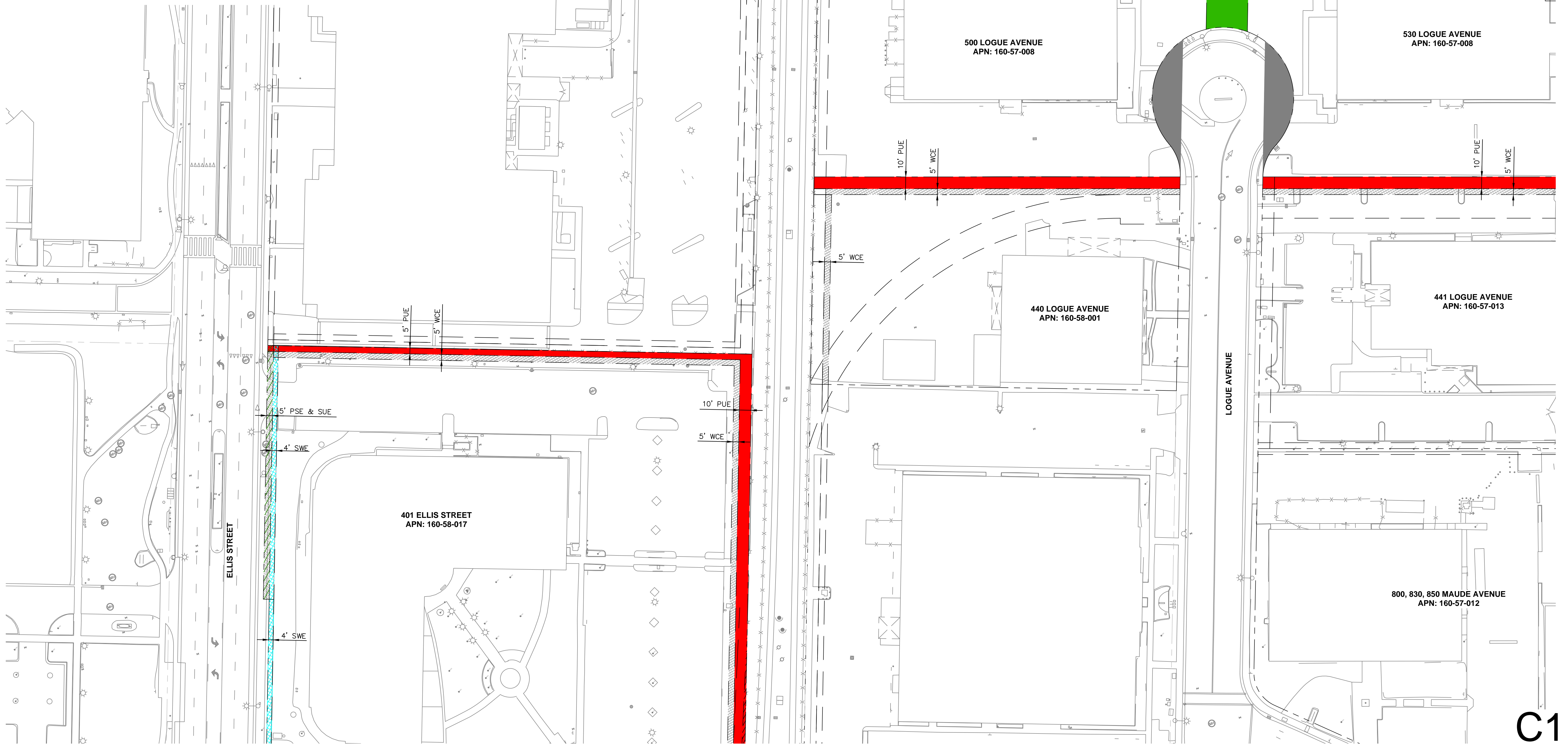


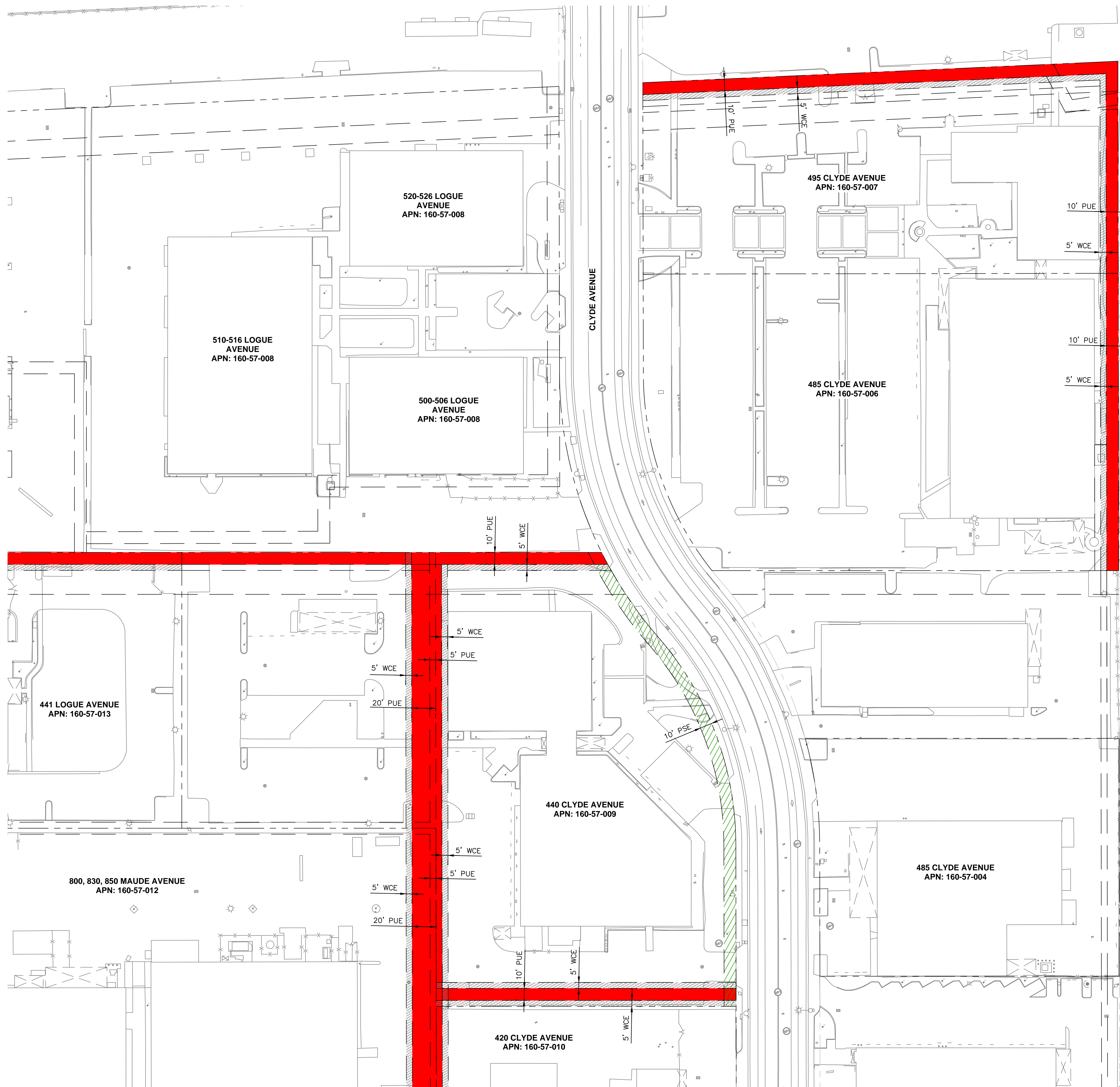
N
 1" = 80'
 EAST WHISMAN VTSM
 PUBLIC EXISTING EASEMENTS VACATED
 SHEET INDEX
 10/6/22

LEGEND:

-  PRIVATE EASEMENTS WITHIN MIDDLEFIELD PARK MASTER PLAN ARE SHOWN FOR REFERENCE
-  PUBLIC SERVICE EASEMENT (PSE) TO BE VACATED
-  SIDEWALK EASEMENT (SWE) TO BE VACATED
-  STREET UTILITY EASEMENT (SUE) TO BE VACATED
-  PEDESTRIAN/BICYCLE PATH & MAINTENANCE ROAD EASEMENT (PBP/MRE) TO BE VACATED
-  SANITARY SEWER & STORM DRAIN EASEMENT (SSE/SDE) TO BE VACATED
-  PUBLIC UTILITY EASEMENT (PUE) TO BE VACATED
-  WIRE CLEARANCE EASEMENT (WCE) TO BE VACATED
-  ANCHOR EASEMENT (AE) TO BE VACATED
-  POLE & WIRE EASEMENT (PWE) TO BE VACATED
-  RIGHT-OF-WAY (ROW) TO BE VACATED

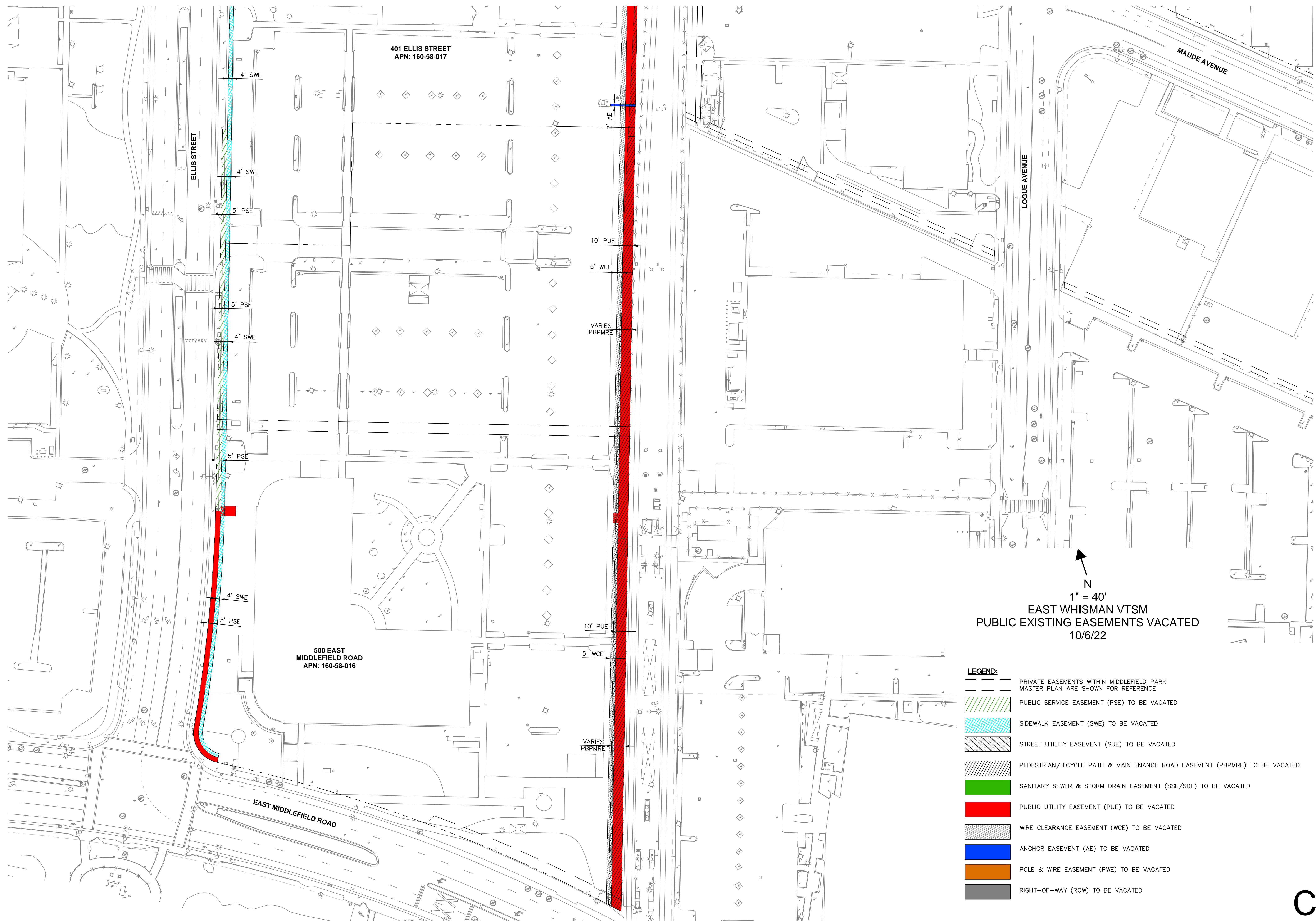
N
1" = 40'
**EAST WHISMAN VTSM
PUBLIC EXISTING EASEMENTS VACATED
10/6/22**





N
 1" = 40'
EAST WHISMAN VTSM
PUBLIC EXISTING EASEMENTS VACATED
 10/6/22

- LEGEND:**
- PRIVATE EASEMENTS WITHIN MIDDLEFIELD PARK MASTER PLAN ARE SHOWN FOR REFERENCE
 - PUBLIC SERVICE EASEMENT (PSE) TO BE VACATED
 - SIDEWALK EASEMENT (SWE) TO BE VACATED
 - STREET UTILITY EASEMENT (SUE) TO BE VACATED
 - PEDESTRIAN/BICYCLE PATH & MAINTENANCE ROAD EASEMENT (PBMRE) TO BE VACATED
 - SANITARY SEWER & STORM DRAIN EASEMENT (SSE/SDE) TO BE VACATED
 - PUBLIC UTILITY EASEMENT (PUE) TO BE VACATED
 - WIRE CLEARANCE EASEMENT (WCE) TO BE VACATED
 - ANCHOR EASEMENT (AE) TO BE VACATED
 - POLE & WIRE EASEMENT (PWE) TO BE VACATED
 - RIGHT-OF-WAY (ROW) TO BE VACATED



401 ELLIS STREET
APN: 160-58-017

500 EAST
MIDDLEFIELD ROAD
APN: 160-58-016

ELLIS STREET

4' SWE

4' SWE

5' PSE

5' PSE

4' SWE

5' PSE

4' SWE

5' PSE

2' AE

10' PUE

5' WCE

VARIES
PBP/MRE

10' PUE

5' WCE

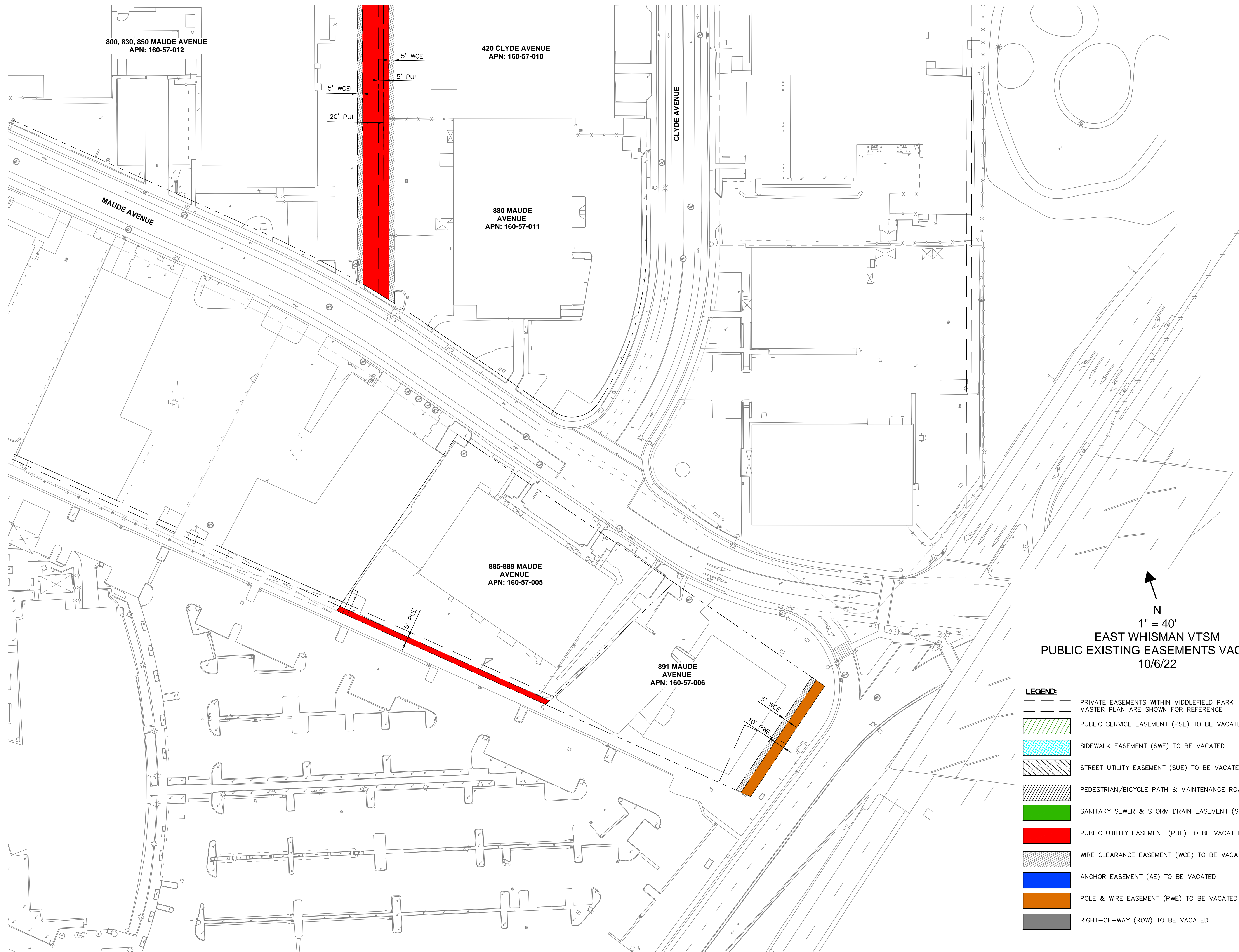
VARIES
PBP/MRE

MAUDE AVENUE

LOGUE AVENUE

1" = 40'
EAST WHISMAN VTSM
PUBLIC EXISTING EASEMENTS VACATED
10/6/22

- LEGEND:**
- PRIVATE EASEMENTS WITHIN MIDDLEFIELD PARK MASTER PLAN ARE SHOWN FOR REFERENCE
 - [Green Hatched] PUBLIC SERVICE EASEMENT (PSE) TO BE VACATED
 - [Blue Hatched] SIDEWALK EASEMENT (SWE) TO BE VACATED
 - [Grey Hatched] STREET UTILITY EASEMENT (SUE) TO BE VACATED
 - [Diagonal Hatched] PEDESTRIAN/BICYCLE PATH & MAINTENANCE ROAD EASEMENT (PBP/MRE) TO BE VACATED
 - [Red] SANITARY SEWER & STORM DRAIN EASEMENT (SSE/SDE) TO BE VACATED
 - [Orange] PUBLIC UTILITY EASEMENT (PUE) TO BE VACATED
 - [Yellow] WIRE CLEARANCE EASEMENT (WCE) TO BE VACATED
 - [Purple] ANCHOR EASEMENT (AE) TO BE VACATED
 - [Light Blue] POLE & WIRE EASEMENT (PWE) TO BE VACATED
 - [Dark Grey] RIGHT-OF-WAY (ROW) TO BE VACATED



800, 830, 850 MAUDE AVENUE
APN: 160-57-012

420 CLYDE AVENUE
APN: 160-57-010

880 MAUDE AVENUE
APN: 160-57-011

885-889 MAUDE AVENUE
APN: 160-57-005

891 MAUDE AVENUE
APN: 160-57-006

CLYDE AVENUE

MAUDE AVENUE

N
1" = 40'
EAST WHISMAN VTSM
PUBLIC EXISTING EASEMENTS VACATED
10/6/22

- LEGEND:**
- PRIVATE EASEMENTS WITHIN MIDDLEFIELD PARK MASTER PLAN ARE SHOWN FOR REFERENCE
 - PUBLIC SERVICE EASEMENT (PSE) TO BE VACATED
 - SIDEWALK EASEMENT (SWE) TO BE VACATED
 - STREET UTILITY EASEMENT (SUE) TO BE VACATED
 - PEDESTRIAN/BICYCLE PATH & MAINTENANCE ROAD EASEMENT (PBP/MRE) TO BE VACATED
 - SANITARY SEWER & STORM DRAIN EASEMENT (SSE/SDE) TO BE VACATED
 - PUBLIC UTILITY EASEMENT (PUE) TO BE VACATED
 - WIRE CLEARANCE EASEMENT (WCE) TO BE VACATED
 - ANCHOR EASEMENT (AE) TO BE VACATED
 - POLE & WIRE EASEMENT (PWE) TO BE VACATED
 - RIGHT-OF-WAY (ROW) TO BE VACATED