

CITY OF MOUNTAIN VIEW
RESOLUTION NO.
SERIES 2020

A RESOLUTION OF INTENTION TO VACATE
PUBLIC EASEMENTS AT 355, 365, 401, AND 415 EAST MIDDLEFIELD ROAD

BE IT RESOLVED BY THE CITY COUNCIL OF THE CITY OF MOUNTAIN VIEW
AS FOLLOWS:

1. Pursuant to the provisions of Part 3 of Division 9 (Section 8300 through 8374) of the Streets and Highways Code of the State (the Public Streets, Highways, and Service Easements Vacation Law), the City Council does hereby declare its intention to vacate public easements at 355, 365, 401, and 415 East Middlefield Road in the City of Mountain View. The legal description and plat of the easements to be vacated, describing the particulars of the proposed vacation, a copy of which is on file in the Office of the City Clerk of the City of Mountain View, is also attached hereto as Exhibit A and incorporated herein by reference.

2. That March 17, 2020, at the hour of 6:30 p.m., or as soon thereafter as the matter can be heard, at City Hall, City Council Chambers, 500 Castro Street, Mountain View, California, be, and the same hereby is, fixed as the time and place for hearing all persons interested in or objecting to the proposed vacations.

3. That the City Clerk be, and she hereby is, directed to publish this Resolution at least fourteen (14) days prior to said hearing, pursuant to Sections 8320 through 8322 of the Streets and Highways Code of the State.

4. That copies of this Resolution shall be conspicuously posted by the said City Clerk along the line of the aforesaid public easements proposed to be vacated at least fourteen (14) days before the date set for hearing; said notice to be posted not more than 300' apart, but at least three (3) of said notices to be posted along the line of said public easements proposed to be vacated, pursuant to Section 8323 of the Streets and Highways Code of the State.

CL/2/RESO/946-02-25-20r

Exhibit: A. Legal Description and Plat

JANUARY 9, 2020
JOB NO.: 2825-000

EXHIBIT A
LEGAL DESCRIPTION
UTILITY VACATION
PUBLIC UTILITY EASEMENTS (PUE) AND WIRE CLEARANCE (WCE) EASEMENTS
(BK 4675 PG 157) WITHIN
LOT 3, TRACT NO. 2724, ELLIS - MIDDLEFIELD INDUSTRIAL PARK (121 M 40),
AND PARCEL ONE, PARCEL MAP (692 M 37)
MOUNTAIN VIEW, CALIFORNIA

REAL PROPERTY, SITUATE IN THE INCORPORATED TERRITORY OF THE CITY OF
MOUNTAIN VIEW, COUNTY OF SANTA CLARA, STATE OF CALIFORNIA, DESCRIBED
AS FOLLOWS:

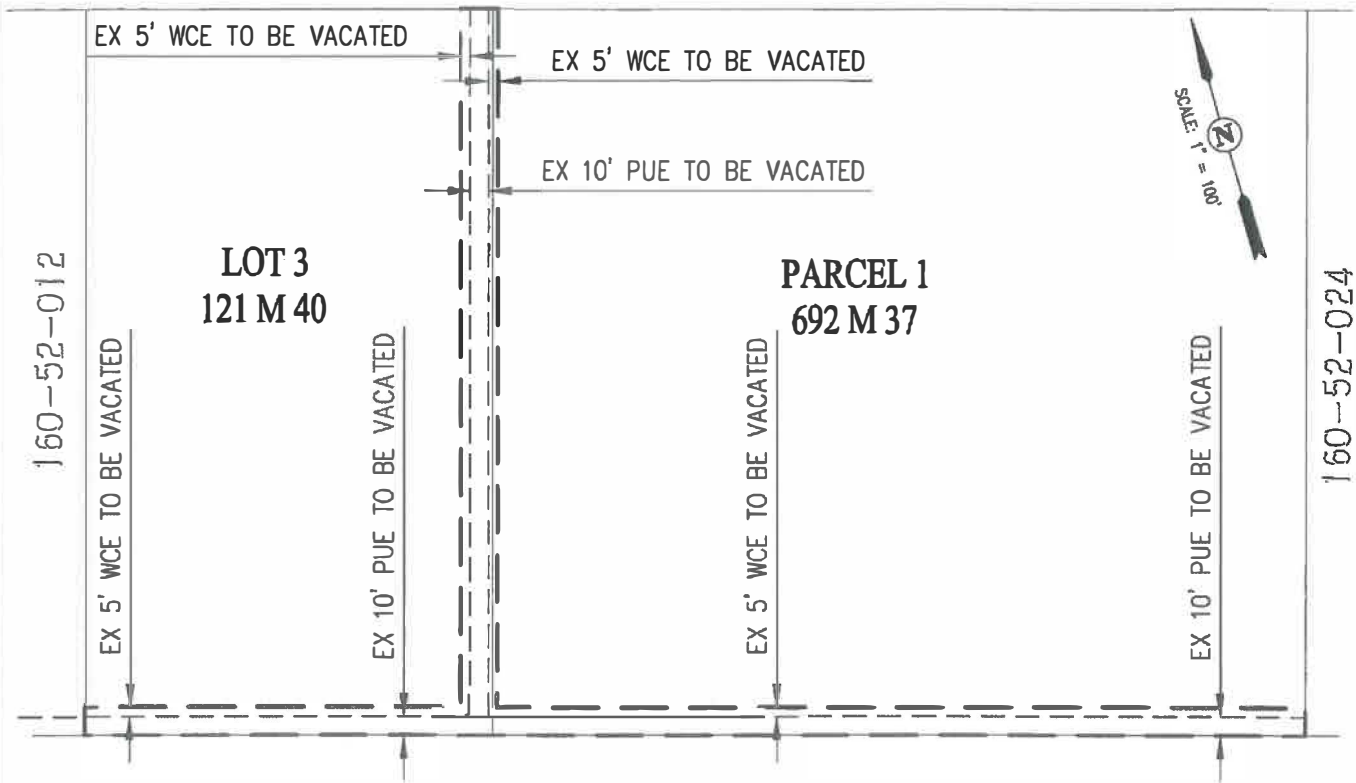
BEING THE PUBLIC UTILITY EASEMENTS AND WIRE CLEARANCE EASEMENTS AS
GRANTED TO THE CITY OF MOUNTAIN VIEW, RECORDED JANUARY 26, 1960 AS
INSTRUMENT NUMBER 1757468 IN BOOK 4675, PAGE 157, SANTA CLARA COUNTY
RECORDS, STATE OF CALIFORNIA, WITHIN LOT 3, AS SHOWN ON THAT CERTAIN
MAP ENTITLED TRACT NO. 2724 ELLIS - MIDDLEFIELD INDUSTRIAL PARK, WHICH
MAP WAS FILED FOR RECORD IN THE OFFICE OF THE RECORDER OF THE COUNTY
OF SANTA CLARA, STATE OF CALIFORNIA ON JUNE 16, 1960, IN BOOK 121 OF
MAPS PAGE(S) 40 THROUGH 44 AND WITHIN PARCEL ONE AS SHOWN ON THAT
CERTAIN PARCEL MAP FILED IN THE OFFICE OF THE RECORDER OF THE COUNTY
OF SANTA CLARA, STATE OF CALIFORNIA ON AUGUST 12, 1997 IN BOOK 692 OF
MAPS, PAGE(S) 37 AND 38.

ATTACHED HERETO IS A PLAT TO ACCOMPANY LEGAL DESCRIPTION, AND BY THIS
REFERENCE MADE A PART HEREOF.

MARK H. WEHBER, P.L.S.
L.S. NO. 7960



MIDDLEFIELD ROAD



160-52-099



LEGEND

PUE PUBLIC UTILITY EASEMENT
 WCE WIRE CLEARANCE EASEMENT

PLAT TO ACCOMPANY LEGAL DESCRIPTION

PUBLIC UTILITY AND WIRE CLEARANCE EASEMENTS TO BE VACATED

LOT 3 (121 M 40) AND PARCEL 1 (692 M 37)

SANTA CLARA COUNTY, CALIFORNIA

CITY OF MOUNTAIN VIEW

JANUARY 9, 2020

SHEET 1 OF 1

Carlson, Barbee & Gibson, Inc.

CIVIL ENGINEERS • SURVEYORS • PLANNERS

SAN RAMON • (925) 866 - 0322

WEST SACRAMENTO • (916) 375 - 1877

1/10/2020 8:35 AM