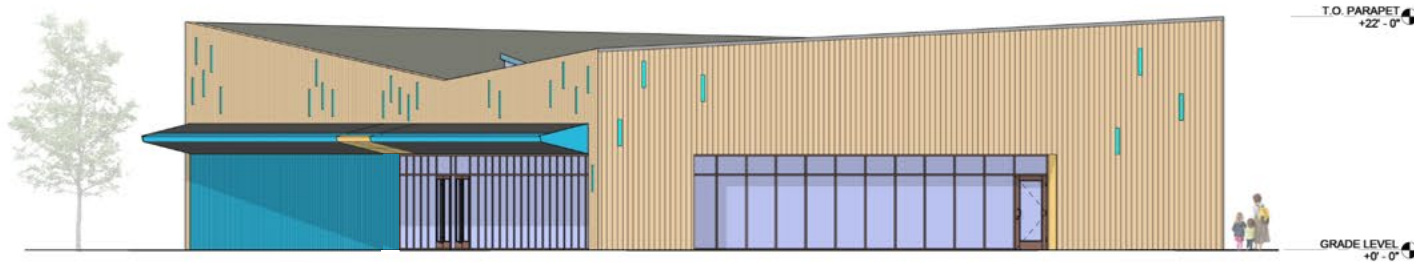


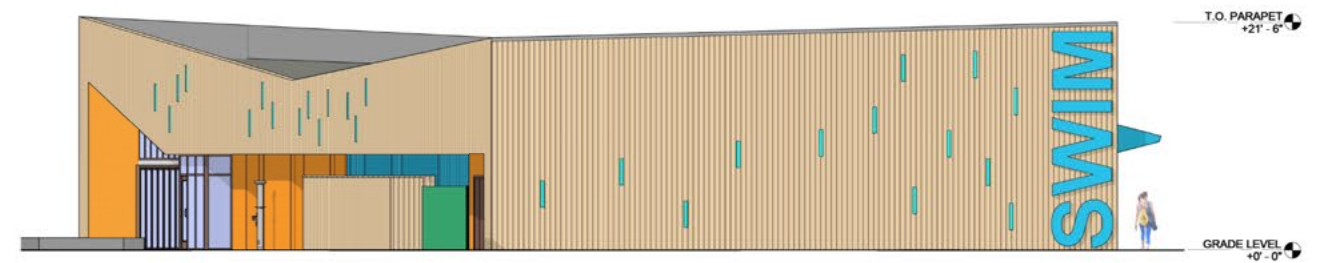
#	DESCRIPTION
3.2	CAST-IN-PLACE CONCRETE CURB
3.3	POLISHED CONCRETE FLOOR FINISH
3.4	SEALED CONCRETE FLOOR FINISH
5.6	PREMANUFACTURED METAL SHIP LADDER, PAINTED
6.4	WOOD FENCE
9.12	RECESSED WALK OFF MAT
22.2	OUTDOOR RINSE SHOWER WITH 2 SHOWER HEADS AND HOT WATER, S.P.D.
22.3	MOP SINK, S.P.D.
32.1	FENCING, VINYL COATED CHAIN LINK



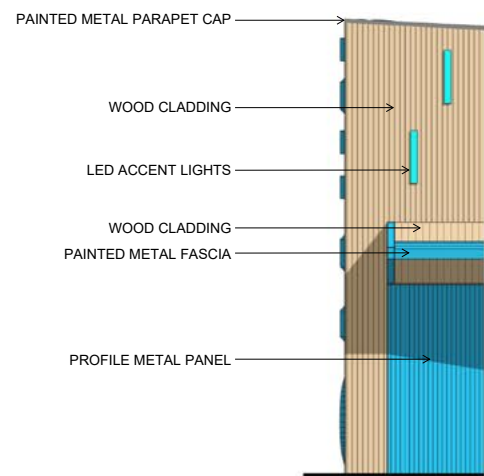
4 ELEVATION - SOUTH - POOL DECK
1/8" = 1'-0"



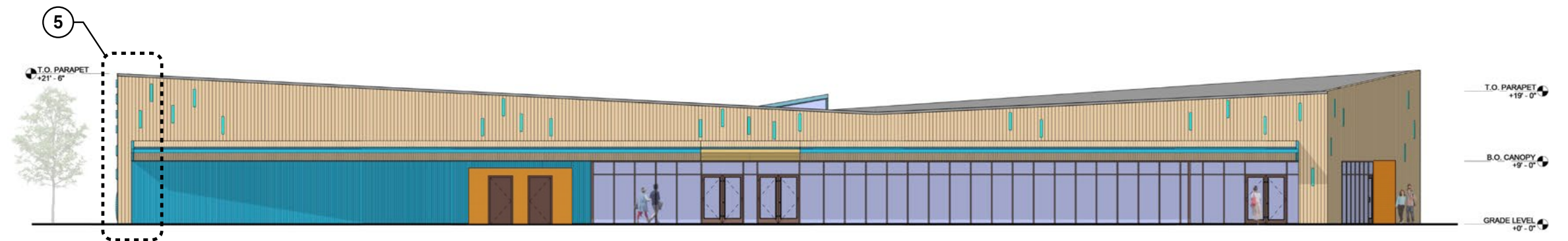
3 ELEVATION - WEST - ORTHOGONAL
1/8" = 1'-0"



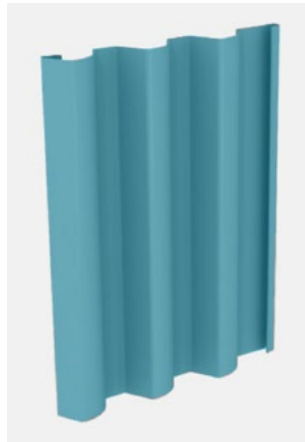
2 ELEVATION - EAST - ORTHOGONAL
1/8" = 1'-0"



5 ENLARGED ELEVATION - NORTH
1/4" = 1'-0"



1 ELEVATION - NORTH - PROJECT ENTRY
1/8" = 1'-0"



CENTRIA METAL PANEL
CASCADE CC-260 - VERTICAL PROFILE

INNOWOOD (COMPOSITE WOOD)
AMERICAN OAK
EMBOSSSED & EMBEDDED WOOD GRAIN
V-JOINT SHIPLAP BOARDS
SIZES: 4" x 13' & 8" x 13'

RECESSED LED LIGHT FIXTURE
SIZE: 4"W x 2'-6"H

CEMENT PLASTER
PAINTED ORANGE
VERTICAL REVEALS



FRONT ENTRY PERSPECTIVE



VIEW TOWARD MULTI-PURPOSE ROOM FROM POOL DECK



VIEW TOWARD BUILDING FROM ACTIVITY POOL