

CITY OF MOUNTAIN VIEW  
RESOLUTION NO.  
SERIES 2020

A RESOLUTION CONDITIONALLY APPROVING A VESTING TENTATIVE MAP  
FOR CONDOMINIUM PURPOSES FOR A 115-UNIT RESIDENTIAL PROJECT  
CREATING 20 LOTS AND SEVEN COMMON LOTS  
ON A 5.44-ACRE LOT  
AT 1555 WEST MIDDLEFIELD ROAD

WHEREAS, an application was received from SummerHill Homes LLC for a Vesting Tentative Subdivision Map to create 20 lots and seven common lots at 1555 West Middlefield Road (Application No. PL-2019-152); and

WHEREAS, on February 12, 2020, at a duly noticed public hearing, the Subdivision Committee considered this request and recommended the Tentative Subdivision Map be approved subject to the attached conditions of approval; and

WHEREAS, on May 19, 2020, the City Council held a public hearing on said request and received and considered all evidence presented at said hearing, including the attached conditions of approval;

NOW, THEREFORE, BE IT RESOLVED, pursuant to the Subdivision Map Act, that the City Council of the City of Mountain View finds:

1. An Initial Study-Mitigated Negative Declaration (IS-MND) was prepared for the project conforming with the California Environmental Quality Act (CEQA) and the analysis determined that all of the environmental impacts associated with the project have been avoided or reduced to a less-than-significant level through the incorporation of mitigation measures.

2. That pursuant to Section 66473.5 and Subsections (a) and (b) of Section 66474 of the Government Code, and Section 28.8 of the Mountain View City Code, the City Council hereby finds that the proposed subdivision, together with the provisions for its design and improvement, is consistent with the General Plan Land Use Designation of Medium-Density Residential (up to 25 dwelling units per acre) of the City, including all required elements therein applicable to said property. The creation of 20 lots and seven common lots is necessary to create the 115 rowhomes for ownership purposes and meets the Rowhouse Design Guidelines. The design or improvement of the proposed subdivision is consistent with the applicable General Plan and specific plans because the subdivision is subject to the subdivider's compliance with all of the conditions of

approval as required by the Subdivision Committee.

3. That pursuant to subsection (c) of Government Code Section 66474, the site is physically suitable for the proposed type of development because the site layout is configured to provide an activated street presence with individual front entries along the frontages and a common open space for residents in approximately the center of the site and the subdivision does not involve any additional proposed development.

4. That pursuant to subsection (d) of Government Code Section 66474, the site is physically suitable for the proposed density of the development because it is consistent with the General Plan Land Use Designation of Medium-Density Residential (up to 25 dwelling units per acre) of the City, including all required elements therein applicable to said property.

5. That the design of the subdivision or the proposed improvements are not likely to cause substantial environmental damage or substantially and avoidably injure fish or wildlife or their habitat pursuant to subsection (e) of Government Code Section 66474 because the subdivision does not involve any additional improvements on the site, nor does it grant any development rights. The City has completed an Initial Study Mitigated/Negative Declaration in conformance with the California Environmental Quality Act (CEQA), and the analysis determined that all of the environmental impacts associated with the project have been avoided or reduced to a less-than-significant level through the incorporation of mitigation. No additional environmental impacts will result from the proposed subdivision.

6. That the design of the subdivision of type of improvements is not likely to cause serious public health problems pursuant to subsection (f) of Government Code Section 66474 because the subdivision does not involve any additional improvements on the site, nor does it grant any development rights. The 20 lots and seven common lots proposed as part of the subdivision is intended to assist in ownership of the rowhouse project. No public health impacts will result from the proposed subdivision.

7. That the design of the subdivision or the type of improvements will not conflict with easements, acquired by the public-at-large, for access through or use of property within the proposed subdivision pursuant to subsection (g) of Government Code Section 66474. There are public utility easements located on the subject site, but they are located outside the building footprint areas and are not affected by the proposed subdivision.

8. That the Vesting Tentative Subdivision Map for 1555 West Middlefield Road is hereby approved subject to the subdivider's compliance with all of those conditions of approval as required by the Subdivision Committee and attached hereto and incorporated herein by reference.

TIME FOR JUDICIAL REVIEW

The time within which judicial review of this decision must be sought is governed by California Code of Civil Procedure, Section 1094.6, as established by Resolution No. 13850, adopted by the City Council on August 9, 1983.

-----

MN/1/RESO  
813-03-17-20r

Exhibits: A. Subdivision Conditions  
B. Vesting Tentative Map

SUBDIVISION CONDITIONS  
APPLICATION NO.: PL-2019-153  
1555 West Middlefield Road

1. **MAP SUBMITTAL:** File a final map for approval and recordation in accordance with the City Code and the California Subdivision Map Act prior to the issuance of any building permit for the property within the subdivision. All existing and proposed easements are to be shown on the map. Submit two black-line copies of the map to the Public Works Department for review together with all items on the Map Checklist concurrent with the off-site improvement plans.
2. **MAP DOCUMENTS:** Prior to the approval and recordation of the map, submit a subdivision guarantee, County Tax Collector's letter regarding unpaid taxes or assessments, and subdivision security if there are unpaid taxes or special assessments.
3. **SOILS REPORT:** Soils and geotechnical reports prepared for the subdivision shall be indicated on the final map. Submit a copy of the report with the first submittal of the final map.
  - a. As required by the State Seismic Hazards Mapping Act, a project site-specific geotechnical investigation shall be conducted by a registered soils/geologist identifying any seismic hazards and recommending mitigation measures to be taken by the project. The applicant, through its registered soils engineer/geologist, shall certify the project complies with the requirements of the State Seismic Hazards Mapping Act. Indicate the location (page number) within the geotechnical report of where this certification is located, or provide a separate letter stating such.
4. **FINAL MAP APPROVAL:** The final map shall be signed and notarized by the owner and engineer/surveyor and submitted to the Public Works Department with an 8.5"x11" reduction of the map. In order to place the approval of the final map on the agenda for the City Council, all related materials and agreements must be completed, signed, and received by the Public Works Department 40 calendar days prior to the Council meeting. After City Council approval, the City will sign the map and provide a Xerox Mylar copy. The applicant's title company shall have the County Recorder's Office record the original and endorse the Xerox Mylar copy. The endorsed Xerox Mylar copy and PDF shall be returned to the Public Works Department within one week after recording the map.
5. **SUBDIVISION FEES:** Pay all subdivision fees due in accordance with the rates in effect at the time of payment prior to the approval of the final map.
6. **MAP PLAN CHECK FEE:** Prior to issuance of any building permits and prior to approval of the final map, as applicable, the applicant shall pay the map plan check fee in accordance with Sections 28.27.b and 28.19.b of the City Code per the rates in effect at time of payment.

An initial map plan check fee based on the Public Works adopted fee schedule shall be paid at the time of initial map plan check submittal.

7. **PLAN CHECK AND INSPECTION FEE:** Prior to issuance of any building permits and prior to approval of the final map, the applicant shall pay the plan check and inspection fee in accordance with Sections 27.60 and 28.36 of the City Code per the adopted rates in effect at time of payment.

An initial plan check fee based on the Public Works adopted fee schedule shall be paid at the time of initial improvement plan check submittal based on the initial cost estimate for constructing street improvements and other public facilities; public and private utilities and structures located within the public right-of-way; and utility, grading, and driveway improvements for common green and townhouse-type condominiums.

Once the plans have been approved, the approved cost estimate will be used to determine the final bond amounts, plan check fees, and inspection fees. Any paid initial plan check fee will be deducted from the approved final plan check fee.

8. **TRANSPORTATION IMPACT FEE:** Prior to issuance of any building permits and prior to approval of the final map, as applicable, the applicant shall pay the transportation impact fee for the development. Residential category fees are based on the number of units. Retail, Service, Office, R&D, and Industrial category fees are based on the square footage of the development. Credit is given for the existing site use(s), as applicable.
9. **WATER AND SEWER CAPACITY CHARGES:** The water and sewer capacity charges for residential connections are based on the number and type of dwelling units. There are separate charges for different types of residential categories so that the capacity charges reasonably reflect the estimated demand of each type of connection. The water and sewer capacity charges for nonresidential connections are based on the water meter size, and the building area and building use, respectively. Credit is given for the demand of the improvements that previously existed on the site. Fees need to be paid per the Public Works Fee Schedule prior to Public Works approving the final map.
10. **PARK LAND DEDICATION FEE:** Prior to issuance of any building permits and prior to approval of the final map, as applicable, the applicant shall pay the Park Land Dedication Fee (approximately \$20,000 to \$40,000 per unit) for each new residential unit in accordance with Chapter 41 of the City Code prior to the issuance of the building permit. No credits against the Park Land Dedication Fee will be allowed for the private open space and recreational facilities. Provide the most current appraisal or escrow closing statement of the property with the following information to assist the City in determining the current market value of the land: (1) a brief description of the existing use of the property; (2) square footage of the lot; and (3) size and type of each building located on the property at the time the property was acquired.
11. **STORM DRAINAGE FEE:** Prior to issuance of any building permits and prior to approval of the final map, the applicant shall pay the off-site storm drainage fee per Section 28.51(b) and with the rates in effect at time of payment.
12. **PUBLIC ACCESS EASEMENT, COVENANTS, AND DEED RESTRICTIONS (CONNECTIONS THROUGH SITES):** Prior to issuance of any building permits and prior to approval of the final map, the owner shall dedicate a 9' wide public access easement (PAE), covenants, agreements, and deed restrictions on private property. The dedication shall indicate that:
  - a. Public access shall be granted for nonautomotive use;
  - b. Owner shall maintain, inspect, and monitor the PAE improvements in good order, condition, and repair and in compliance with the Americans with Disabilities Act (ADA);
  - c. The PAE shall run with the land and be binding upon any successors;
  - d. If Owner shall fail to abide by PAE, Owner agrees to pay all reasonable costs and expenses incurred by City in enforcing the performance of such obligations; and
  - e. Owner agrees to defend and hold City, its officers, employees, agents, and volunteers harmless from any liability for damage or claims for damage for personal injury, including, but not limited to, death and/or property damage caused by negligent acts, errors, or omissions in performance of services or operations under the Dedication, including maintenance operations performed on the PAE by Owner or Owner's contractors, subcontractors, agents, or employees.

A legal description (metes and bounds) and plat map (drawing) of: (1) the owner's property; and (2) the PAE area shall be prepared by Owner in accordance with the City's Legal Description and Plat Requirements and submitted to the Public Works Department for review and approval. The legal description and plat must be prepared and stamped by a California-registered civil engineer or land surveyor.

Associated improvements within the PAE (PAE Improvements) shall be constructed by Owner and approved by the City.

13. **FRONTAGE PUBLIC UTILITY EASEMENT DEDICATION:** Dedicate a 5' wide public utility easement (PUE) along project street frontage(s) on the face of the map for such use as sanitary sewer, water, storm drains, and other public utilities, including gas, electric, communication, and cable television facilities, as required by the Public Works Director. The property owner or homeowners association shall maintain the surface improvements over the easement and must not modify or obstruct the easement area in a manner contrary to the intent of the easement. The dedication statement shall specify the PUE shall be kept free and clear of buildings and other permanent structures/facilities, including, but not limited to, the following:
  - Garages, sheds, carports, and storage structures;
  - Balconies and porches;
  - Retaining walls;
  - C.3 bioretention systems; and
  - Private utility lines running longitudinally within the PUE.
14. **PUBLIC WATER METER EASEMENT:** Dedicate public water meter easement (WME) on the face of the map to construct, install, maintain, repair, replace, and operate water meters and appurtenances, as required by the Public Works Director.
15. **PUBLIC SERVICE EASEMENT:** Dedicate a public service easement (PSE) on the face of the map to the utility company(ies) for the proposed electric, gas, and telecommunication conduits and vaults serving the project.
16. **UTILITY EASEMENT AND APPROVALS:** Dedicate utility easements, as required by the utility companies and as approved by the Public Works Director. All street and public service easement dedications are to be shown on the final map. The subdivider shall submit two copies of the map to PG&E, AT&T (SBC), and Comcast for their review and determination of easement needs. The public service easement dedications must be approved by the utility companies prior to the approval of the final map.
17. **CC&Rs:** Covenants, Conditions, and Restrictions (CC&Rs) for the homeowners association, together with a completed CC&R checklist, shall be submitted to and approved by the City Attorney's Office and the Community Development Department prior to approval and recordation of the map. The said covenants shall include and stipulate all of the standard provisions which are shown on the attached sheet. The checklist and proposed CC&Rs shall be annotated to show exactly where each of the standard provisions have been incorporated into the CC&R document.
18. **CC&Rs, SPECIAL PAVEMENT MAINTENANCE:** The homeowners association shall be responsible for replacing any special pavers or textured/colored concrete that is removed by the City to repair, replace, or maintain any City underground utilities located within private streets, driveways, or easement areas. This requirement shall be stated in the Covenants, Conditions, and Restrictions (CC&Rs). A copy of the CC&Rs with this provision marked or highlighted shall be submitted to the Community Development Department for review and approval by the Public Works Department.
19. **CC&Rs, PARKING RESTRICTION:** Parking shall be prohibited within the common driveways, excluding approved guest parking, as the parking would obstruct the use of the driveway. These parking prohibitions shall be stated within the Covenants, Conditions, and Restrictions (CC&Rs). A copy of the CC&Rs with this provision

highlighted shall be submitted to the Community Development Department for review and approval by the Public Works Department. The common driveway shall be signed and/or striped as “No Parking” or “No Parking – Fire Lane.”

20. **CC&Rs, PRIVATE UTILITY MAINTENANCE PLAN AND SANITARY SEWER OVERFLOW PLAN:** The Covenants, Conditions, and Restrictions (CC&Rs) shall include a provision that the homeowners association prepare a private utility maintenance plan for on-site water, sanitary sewer, and storm drainage facilities. The maintenance plan shall include elements such as, but not limited to, flushing of the sanitary sewer and storm lines, cleaning of storm drain inlets and grates, and inspection of the water system (including flushing and exercising of valves and blowoffs). The CC&Rs shall also include a provision that the HOA prepare a sanitary sewer overflow plan, which includes elements such as 24-hour contact information, response times, confinement, and methods to contain and remediate spills. A copy of the CC&Rs with this provision marked or highlighted shall be submitted to the Community Development Department for review and approval by the Public Works Department.
21. **CC&Rs, GARBAGE PICKUP (INDIVIDUAL SERVICE):** The Covenants, Conditions, and Restrictions (CC&Rs) shall include a provision stating that the homeowners are responsible for bringing their garbage, recycling, and compost carts to the curb along the private street on garbage collection days. An exhibit indicating the location of the carts on pickup day shall be included. A copy of the CC&Rs with this provision marked or highlighted shall be submitted to the Community Development Department for review and approval by the Public Works Department.
22. **CC&Rs, CART PLACEMENT:** Containers must be set out a minimum distance of 1’ in front of the garage door and must not block the 20’ wide drive aisle and/or sidewalk on collection day. Show set-out location of individual trash, recycle, and compost carts on collection day. This requirement shall be stated in the Covenants, Conditions, and Restrictions (CC&Rs). A copy of the CC&Rs with this provision marked or highlighted shall be submitted to the Community Development Department for review and approval by the Public Works Department.
23. **CC&Rs, CART STORAGE:** Carts will be required to be stored inside garage at all times with the exception of 24 hours prior to and 24 hours after designated collection day, when carts may be set out in front of the garage. This requirement shall be stated in the Covenants, Conditions, and Restrictions (CC&Rs). A copy of the CC&Rs with this provision marked or highlighted shall be submitted to the Community Development Department for review and approval by the Public Works Department and other Departments/Divisions, as applicable.
24. **PUBLIC AND PRIVATE COMMON IMPROVEMENTS:** Install or reconstruct standard public and private common improvements required for the subdivision and as required by Chapters 27 and 28 of the City Code. The public improvements include, but are not limited to, new curb, gutter, ADA curb ramp, driveway, and sidewalk along the project frontage on Middlefield Road, San Pierre Way, and San Ramon Avenue; water, sewer, and storm drainage facilities; joint trench utilities; resurface half street pavement along the project frontage per City’s standards; installations and relocations of streetlights; undergrounding of overhead frontage lines and services. The private common improvement(s) include, but are not limited to, private storm, sewer, water, and joint trench mains within the private street.
  - a. **IMPROVEMENT AGREEMENT:** The property owner must sign a Public Works Department improvement agreement for the installation of the public and on-site common improvements prior to the approval of the final map.
  - b. **BONDS/SECURITIES:** Sign a Public Works Department faithful performance bond (100 percent) and materials/labor bond (100 percent) or provide a letter of credit (150 percent) or cash security (100 percent) securing the installation and warranty of the off-site and on-site common improvements in a form approved by the City Attorney’s Office. The surety (bond company) must be listed as an acceptable surety on the most current Department of the Treasury’s Listing of Approved Sureties on Federal Bonds, Department Circular 570. This list of approved sureties is available through the Internet at: [www.fiscal.treasury.gov/fsreports/ref/suretyBnd/c570\\_a-z.htm](http://www.fiscal.treasury.gov/fsreports/ref/suretyBnd/c570_a-z.htm). The bond amount must be below the

underwriting limitation amount listed on the Department of the Treasury's Listing of Approved Sureties. The surety must be licensed to do business in California. Guidelines for security are available at the Public Works Department.

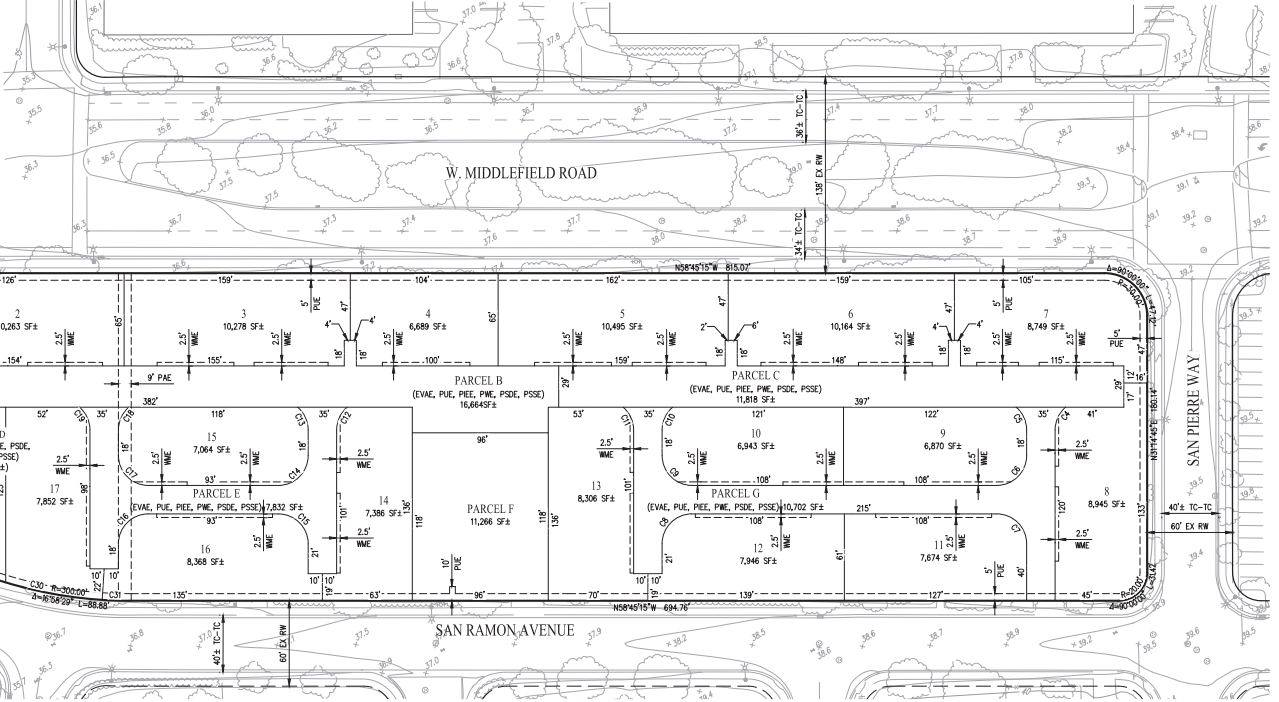
- c. **INSURANCE:** Provide a Certificate of Insurance and endorsements for the Commercial General Liability and Automobile Liability naming the City as an additional insured from the entity that will sign the improvement agreement prior to the approval of the final map. The insurance coverage amounts are a minimum of Two Million Dollars (\$2,000,000) Commercial General Liability, One Million Dollars (\$1,000,000) Automobile Liability, One Million Dollars (\$1,000,000) Pollution Legal Liability Insurance, and One Million Dollars (\$1,000,000) Workers' Compensation. The insurance requirements are available from the Public Works Department.
25. **OFF-SITE IMPROVEMENT PLANS:** Prepare off-site public improvement plans in accordance with Chapter 28 of the City Code, the City's Standard Design Criteria, Submittal Checklist, Plan Review Checklist, and the conditions of approval of the project. The plans are to be drawn on 24" x 36" sheets at a minimum scale of 1" = 20'. The plans shall be stamped by a California-registered civil engineer and shall show all public improvements and other applicable work within the public right-of-way. Traffic control plans for each phase of construction shall be prepared in accordance with the latest edition of the California Manual of Uniform Traffic Control Devices (CA MUTCD) and shall show, at a minimum, work areas, delineators, signs, and other traffic control measures required for work that impacts traffic on existing streets. Locations of on-site parking for construction equipment and construction workers and on-site material storage areas must be submitted for review and approval. Off-site improvement plans (10 sets), an initial plan check fee and map plan check fee based on the Public Works fee schedule, Improvement Plan Checklist, and items noted within the checklist must be submitted together as a separate package concurrent with the first submittal of the building plans. The off-site plans must be approved and signed by the Public Works Department. After the plans have been signed by the Public Works Department, 10 full-size and 2 half-size black-line sets, 1 Xerox Mylar (4 mil) set of the plans, and CD with CAD file and PDF must be submitted to the Public Works Department prior to the approval of the final map. CAD files shall meet the City's Digital Data Submission Standards.
26. **PRIVATE COMMON IMPROVEMENT PLANS:** Prepare on-site common improvement plans consisting of the proposed demolition, fill, grading, retaining walls, drainage, private streets, common driveways, common utilities, public utilities, and other applicable improvements in accordance with Chapter 28 of the City Code, the Standard Design Criteria for Common Green and Townhouse-Type Condominiums, and the conditions of approval of the subdivision. The plans are to be drawn on 24" x 36" sheets at a minimum scale of 1" = 20'. The improvement plans (10 sets), Improvement Plan Checklist, and items noted within the checklist must be submitted together as a separate package concurrent with the first submittal of the building plans and final map. The improvement plans must be approved and signed by the Public Works Department. After the improvement plans have been signed by the Public Works Department, 10 full-size and 2 half-size black-line sets, 1 Xerox Mylar (4 mil) set of the plans, and CD with CAD file and PDF must be submitted to the Public Works Department prior to the approval of the final map. CAD files shall meet the City's Digital Data Submission Standards. Where both public and common improvement plans are required, the plans shall be combined into one set of plans.
27. **INFRASTRUCTURE QUANTITIES:** Upon submittal of the initial building permit and improvement plans, submit a completed construction cost estimate form indicating the quantities of the street and utility improvements with the submittal of the improvement plans. The construction cost estimate is used to estimate the cost of improvements and to determine the Public Works plan check and inspection fees. The construction cost estimate is to be prepared by the civil engineer preparing the improvement plans.
28. **UNDERGROUNDING OF OVERHEAD SERVICES:** All new and existing electric and telecommunication facilities serving the subdivision are to be placed underground (including transformers). The undergrounding of the new and existing overhead electric and telecommunication lines is to be completed prior to issuance of a Certificate of Occupancy for any new buildings within the subdivision. (If allowed by the City, aboveground



transformers shall be located so they are screened or not visible from the street or to the general public, as approved by the Community Development and Public Works Departments.)

29. **JOINT UTILITY PLANS:** Upon submittal of the initial building permit and improvement plans, the applicant shall submit joint utility plans showing the location of the proposed electric, gas, and telecommunication conduits and associated facilities, including, but not limited to, vaults, manholes, cabinets, pedestals, etc. These plans shall be combined with and made part of the improvement plans. Joint trench intent drawings will be accepted at first improvement plan submittal. All subsequent improvement plan submittals shall include joint trench design plans. Dedicate public utility easements that are necessary for the common utility on the final map.
30. **UNDERGROUNDING OF OVERHEAD LINES:** Underground existing overhead electric and telecommunication facilities fronting the property along Middlefield Road, San Pierre Way, and San Ramon Avenue, unless waived by the City Council after consideration of the recommendation of the Public Works Director due to unusual or impractical circumstances. The undergrounding work shall be constructed in conjunction with any applicable off-site improvements and completed prior to issuance of a Certificate of Occupancy for any new unit. All poles fronting the property shall be removed. If the undergrounding requirement is waived, subdivider shall fulfill whatever substitute conditions the City shall impose prior to final map approval.
31. **UTILITY MAINTENANCE:** On-site water, sanitary sewer, and storm drainage facilities shall be privately maintained.
32. **SURFACE WATER RELEASE:** Provide a surface stormwater release for the lots, driveways, alleys, and private streets that prevents the residential buildings from being flooded in the event the storm drainage system becomes blocked or obstructed. Show and identify path of surface water release on the improvement plans.
33. **LOT DRAINAGE:** Each residential lot shall be designed to drain toward the streets, alleys, common driveways, or common areas. The drainage paths for the privately owned lots shall be designed such that the drainage paths do not cross the common property lines unless an exception is approved by the Public Works Department due to unavoidable circumstances (such as to provide drainage to an existing Heritage tree).
34. **SUBDIVISION AND DESIGN CRITERIA PROVISIONS:** It is the applicant's responsibility to comply with relevant provisions of Chapter 28 of the City Code and with the City's Design Criteria for Common Green Developments and Townhouse-Type Condominiums.
35. **CONSISTENCY WITH OTHER APPROVALS:** This map shall be consistent with all requirements of the Planned Unit Development Permit and Development Review Permit, Application No. PL-2019-152. All conditions of approval imposed under that application shall remain in full force and effect and shall be met prior to approval of the final map.
36. **APPROVAL EXPIRATION:** If the map is not completed within twenty-four (24) months from the date of this approval, this map shall expire. The map is eligible for an extension of an additional twelve (12) months, provided the request for extension is filed by the applicant prior to the expiration of the original map. Upon filing a timely application for extension, the map shall automatically be extended for sixty (60) days or until the application for the extension is approved, conditionally approved, or denied, whichever occurs first.

CURVE TABLE				CURVE TABLE				CURVE TABLE				CURVE TABLE			
NO	RADIUS	DELTA	LENGTH	NO	RADIUS	DELTA	LENGTH	NO	RADIUS	DELTA	LENGTH	NO	RADIUS	DELTA	LENGTH
C1	1704.53'	21°3'53"	66.38'	C9	21.00'	89°33'15"	32.82'	C17	21.22'	83°4'58"	31.00'	C25	360.00'	73°30'05"	47.13'
C2	21.00'	90°00'00"	32.99'	C10	21.00'	49°37'57"	18.19'	C18	21.01'	49°35'50"	18.19'	C26	360.00'	74°47'29"	48.96'
C3	192.00'	19°02'30"	63.81'	C11	21.00'	49°37'57"	18.19'	C19	21.00'	49°37'57"	18.19'	C27	360.00'	83°11'33"	53.53'
C4	21.00'	49°37'57"	18.19'	C12	21.00'	49°37'57"	18.19'	C20	21.00'	49°37'57"	18.19'	C28	360.00'	37°21'11"	20.13'
C5	21.00'	49°38'04"	18.19'	C13	21.00'	49°37'57"	18.19'	C21	21.00'	49°37'57"	18.19'	C29	360.00'	90°16'14"	57.23'
C6	21.00'	86°02'30"	31.66'	C14	21.00'	90°00'00"	32.99'	C22	145.00'	93°08'01"	24.42'	C30	300.00'	12°46'56"	66.93'
C7	21.12'	84°59'41"	31.32'	C15	21.00'	90°00'00"	32.99'	C23	145.00'	65°04'44"	17.63'	C31	300.00'	47°05'13"	21.40'
C8	21.00'	89°04'23"	32.65'	C16	21.15'	84°54'11"	31.03'	C24	21.00'	49°37'57"	18.19'	C32	1704.53'	57°06'21"	151.90'



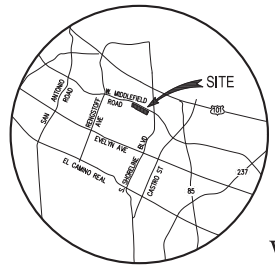
**ABBREVIATIONS**

APN	ACCESS PARCEL NUMBER
EVAE	EMERGENCY VEHICLE ACCESS EASEMENT
EX	EXISTING
L	LENGTH
PAE	PUBLIC ACCESS EASEMENT
PIE	PRIVATE WAREHOUSE EASEMENT
PSDE	PRIVATE STORM DRAIN EASEMENT
PSSE	PRIVATE SANITARY SEWER EASEMENT
PUE	PUBLIC UTILITY EASEMENT
PWE	PRIVATE WATER LINE EASEMENT
R	RADIUS
R/W	RIGHT OF WAY
R/W SF	RIGHT OF WAY SQUARE FEET
TC	TOP OF CURB
WME	WATER METER EASEMENT

**GENERAL NOTES:**

- OWNER: LINDSAY PROPERTIES, LLC  
P.O. BOX 49087  
COLORADO SPRINGS, CO 80947  
(719) 434-4681
- APPLICANT: SUMMERHILL HOMES, LLC  
777 SOUTH CALIFORNIA AVENUE  
PALO ALTO, CA 94304  
(650) 842-2360  
JOHN HICKET
- CIVIL ENGINEER: CARSON, BARBER & GIBSON, INC.  
2633 CAMINO RAMON, SUITE 350  
SAN RAMON, CA 94583  
(925) 866-0322  
RYAN HANSEN, P.E.
- GEOTECHNICAL ENGINEER: ENGED INCORPORATED, INC.  
2010 CROW CANYON PLACE, SUITE 250  
SAN RAMON, CA 94583  
(925)-866-9000  
SCOTT JOHNS, PE, GSD
- ARCHITECT: SDC ARCHITECTS, INC.  
1380 WALNUT BLVD., SUITE 320  
BRENTWOOD, CA 94513  
(925) 634-3000  
RALPH STRASSER
- CONTOUR INTERVAL: 1 FOOT (EXISTING)
- ADDRESS: 1555 WEST MIDDLEFIELD ROAD
- APN: 150-15-006
- GENERAL PLANE: MEDIUM DENSITY RESIDENTIAL  
(13 TO 25 DU/AC)
- EXISTING ZONING: R3-2
- PROPOSED ZONING: R3-2
- EXISTING USE: RESIDENTIAL
- PROPOSED USE: RESIDENTIAL
- SITE AREA: 5.444 AC (236,972 SF)
- NUMBER OF UNITS: 115

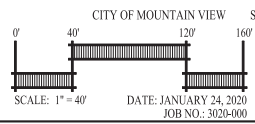
- DENSITY: 21.18 DU/AC
- EXISTING LOTS: 1
- PROPOSED LOTS/PARCELS: 27
- LOT SIZE:  
MINIMUM: 5,542.2 SF  
MAXIMUM: 10,267.3 SF
- UTILITIES:  
WATER: CITY OF MOUNTAIN VIEW  
STORM DRAIN: CITY OF MOUNTAIN VIEW  
GAS & ELECTRIC: PACIFIC GAS & ELECTRIC  
TELEPHONE & CABLE TV: TBO
- ALL BUILDINGS TO BE SERVED BY NTPA 13 WATER SYSTEM WHICH UTILIZES A SEPARATE FIRE/DOMESTIC WATER SERVICES.
- FLOOD ZONE DESIGNATION: ZONE X - AREA WITH REPEATED FLOOD RISK DUE TO LEVEL
- TRASH/RECYCLE: INDIVIDUAL UNIT CAN PICKUP TO BE PROVIDED BY RECOLOGY
- STREETS: ALL PROPOSED STREETS AND ALLEYS ARE PRIVATE
- GRADING: PROPOSED GRADING AS SHOWN IS PRELIMINARY. FINISHED GRADING IS SUBJECT TO FINAL DESIGN
- DIMENSIONS: ALL PARCEL AND LOT DIMENSIONS SHOWN ARE APPROXIMATE AND MAY CHANGE DURING FINAL DESIGN
- PHASING: BUILDINGS MAY BE CONSTRUCTED AND OCCUPIED IN MULTIPLE PHASES
- EROSION CONTROL: EROSION CONTROL WILL BE PREPARED PER CITY STANDARDS AND ABAG RECOMMENDATIONS
- COMMON AREAS: COMMON AREAS TO BE MAINTAINED BY THE HOMEOWNERS ASSOCIATION
- ACCESSIBILITY: ALL REQUIRED ADA ACCESSIBLE UNITS WILL BE DESIGNED PER CALIFORNIA BUILDING CODE REQUIREMENTS WITH RESPECT TO SITE ACCESSIBILITY. SEE SHEETS C.3 & C.4 FOR PRELIMINARY ADA UNIT LOCATIONS.
- LIGHTING: ALL ON-SITE LIGHTING WILL BE PRIVATE AND HOA MAINTAINED
- TREES: EXISTING TREES ON SITE TO BE REMOVED AS SHOWN ON SHEET C.1. PROPOSED ON-SITE TREES SHALL BE PRIVATELY MAINTAINED.
- BENCHMARK: CITY OF MOUNTAIN VIEW BENCHMARK NO. 88-41 BROWN OAK STAMPED 10'-40" SET IN THE TOP OF CURB OF THE NORTHWEST CORNER OF PARLEY STREET AT SAN RAMON AVENUE ELEVATION: 32.374 FEET NAVD88
- BASIS OF BEARINGS: THE BASIS OF BEARINGS FOR THIS SURVEY IS DETERMINED BY FOUND MONUMENTS SHOWN HEREON. THE BEARING BEING N127°15'E PER TRACT NO. 775 "MEADOW GLEN UNIT NO. 3" (30 MAPS 42).
- CONDOMINIUM MAP: A CONDOMINIUM MAP WILL BE RECORDED FOR LOTS 1 THROUGH 20 AND THE SUBDIVISION IS A CONDOMINIUM PROJECT AS DEFINED IN SECTIONS 4123 AND 4285 ET. SEQ. OF THE CIVIL CODE OF THE STATE OF CALIFORNIA AND FILED PURSUANT TO THE SUBDIVISION MAP ACT. THE TOTAL NUMBER OF CONDOMINIUM DWELLING UNITS SHALL BE NO MORE THAN 115 RESIDENTIAL CONDOMINIUM UNITS FOR LOTS 1 THROUGH 20.
- VESTING TENTATIVE MAP: WHEN A VESTING TENTATIVE MAP IS APPROVED FOR A PROJECT, GOV. SEC. 66498.1(B) GIVES THE DEVELOPER THE RIGHT TO PROCEED WITH DEVELOPMENT IN SUBSTANTIAL COMPLIANCE WITH THE ORDINANCES, POLICES, AND STANDARDS IN EFFECT AT THE TIME THE PROJECT APPLICATION IS DEEMED COMPLETE EXCEPT THAT IF THE CITY HAS INITIATED PROCEEDINGS TO DENY THE GENERAL PLAN OR ZONING AND HAS PUBLISHED NOTICE OF THAT, THE CITY MAY APPLY THE NEW GENERAL PLAN AND ZONING TO THE PROJECT (GOV. SEC. 66474.2(B), (C)). THE PROJECT APPLICATION HAS BEEN DETERMINED TO BE COMPLETE AS OF JUNE 5, 2019.



VICINITY MAP  
NOT TO SCALE



VESTING TENTATIVE MAP  
FOR CONDOMINIUM PURPOSES  
1555 W. MIDDLEFIELD ROAD



CITY OF MOUNTAIN VIEW SANTA CLARA COUNTY CALIFORNIA



SAN RAMON (925) 868-0322  
SACRAMENTO (916) 376-1877  
WWW.CBANDCO.COM

SHEET NO. **TM.1**  
OF 9 SHEETS

PLANNERS