



DATE: May 25, 2021

CATEGORY: Consent

DEPT.: Public Works

TITLE: **Shoreline Maintenance Storage Plan, Project 14-34 – Approve Plans and Specifications and Authorize Bidding**

RECOMMENDATION

1. Approve plans and specifications for Shoreline Maintenance Storage Plan, Project 14-34, and authorize staff to advertise the project for bids.
2. Authorize the City Manager to award the construction contract to the lowest responsible bidder if the bid is within the project budget.

BACKGROUND

The Shoreline Maintenance Storage Plan project is located within Shoreline at Mountain View, east of the Shoreline Athletic Fields (see Figure 1 – Project Location). The project was created to: (1) conceal material storage from public view; (2) consolidate storage into a more efficient footprint; and (3) place stored materials into a lighted storage building instead of old, unlit shipping containers. The original project scope also included construction of concrete storage bins adjacent to the Energy Trail to store materials used for maintenance of Shoreline Golf Links.



Figure 1: Project Location

On April 14, 2015, the City Council approved plans and specifications, adopted the Mitigated Negative Declaration in accordance with the California Environmental Quality Act (CEQA), authorized bidding, and appropriated an additional \$236,000 to the project for a total project budget of \$912,000. On June 4, 2015, three bids were received, all of which exceeded the project budget. On July 7, 2015, Council rejected all bids due to the low bid significantly exceeding the Engineer's Estimate. As part of the Fiscal Year 2016-17 Capital Improvement Program, Council increased the budget by \$385,000 to allow for rebidding the project.

ANALYSIS

Rebidding the project was delayed due to changing circumstances for mitigating project impacts on one of the protected species identified in the CEQA Mitigated Negative Declaration.

The 2015 environmental review identified impacts to three protected species: Congdon's tarplant, grey fox, and western burrowing owl foraging habitat. Mitigation areas were

identified for the owl foraging habitat, but, in 2016 and thereafter, owls began nesting in the proposed mitigation areas, so the areas could not be used for foraging mitigation. Staff has coordinated with the City's Wildlife Preservation Coordinator over the last few years evaluating alternatives. It was determined that revising the project scope to remove the proposed concrete storage bins is the preferred path forward. This results in a reduced scope with no anticipated impacts to the western burrowing owl foraging habitat or Congdon's tarplant. A grey fox den is located beneath a shipping container, and the project includes the construction of an artificial grey fox den nearby.

The material that was to be stored in the proposed concrete storage bins will remain in their current locations throughout Shoreline at Mountain View, which are near the practice greens and along the Energy Trail.

The reduced project scope now includes (see Figure 2):

- Construction of a 1,440 square foot preengineered storage building;
- Removal of four older shipping containers;
- Relocation of two shipping containers;
- Mitigation of grey fox impact at the project site; and
- Installation of asphalt concrete surface for truck traffic.

Plans and specifications for the project are complete and available for viewing in the Public Works Department.

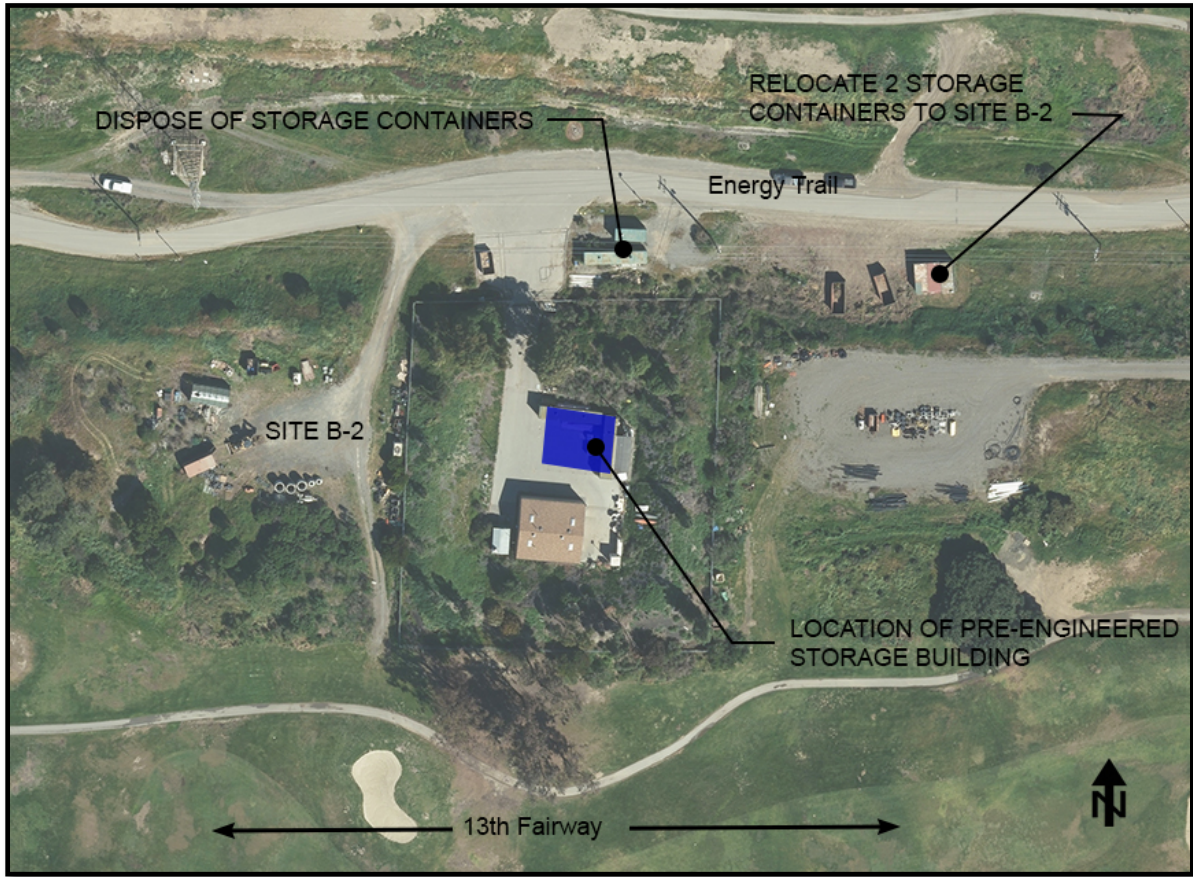


Figure 2: Project Site Plan

Environmental Clearance

In accordance with the requirements of CEQA, the Mitigated Negative Declaration, adopted on [April 14, 2015](#), determined there would be no impacts if mitigation measures are implemented to protect the western burrowing owl habitat, Congdon's tarplant, and grey fox. The revised project scope eliminates the Mitigated Negative Declaration's identified impacts to the western burrowing owl foraging habitat and Congdon's tarplant and includes a mitigation for the grey fox impact at the project site.

Project Schedule

If Council approves the recommended actions and a responsive bid within the project budget is received, construction is anticipated to begin in late 2021 and be completed by spring 2022.

FISCAL IMPACT

Shoreline Maintenance Storage Plan, Project 14-34, is funded with \$1,297,000 from the Shoreline Regional Park Community Fund. There is sufficient funding for the project.

The estimated project cost is as follows:

Construction	\$775,000
Construction Contingency	70,000
Consultant Design and Environmental Services	190,000
City Project Management	45,000
Construction Inspection and Testing	95,000
Permits, Miscellaneous	15,000
Project Contingency	<u>27,000</u>
 Subtotal	 \$1,217,000
 City Administration	 <u>80,000</u>
 TOTAL PROJECT COST	 <u>\$1,297,000</u>

ALTERNATIVES

1. Do not approve plans and specifications and defer the project.
2. Provide other direction to staff.

PUBLIC NOTICING – Agenda posting.

Prepared by:

Rey S. Rodriguez
Senior Project Manager

Reviewed by:

Robert Gonzales
Principal Civil Engineer

Edward Arango
Assistant Public Works Director/
City Engineer

RSR/TS/6/CAM
999-05-25-21CR
200459

Approved by:

Dawn S. Cameron
Public Works Director

Audrey Seymour Ramberg
Assistant City Manager/
Chief Operating Officer

cc: APWD – Arango, SPM – Rodriguez, PCE – Gonzales, PCE – Shah, SMA –
Goedicke, PA – Li, File (14-34)