

CITY OF MOUNTAIN VIEW  
RESOLUTION NO.  
SERIES 2014

A RESOLUTION CONDITIONALLY APPROVING A TENTATIVE MAP  
TO SUBDIVIDE A 1.0-ACRE LOT INTO 18 RESIDENTIAL LOTS AND 2 COMMON  
LOTS WITH A SHARED DRIVEWAY, GUEST PARKING,  
AND LANDSCAPING AT 111-123 FAIRCHILD DRIVE

WHEREAS, an application was submitted by MV Fairchild Investors, LLC, for a tentative subdivision map to subdivide 1 existing lot into 18 residential lots and 2 common lots for a shared driveway, guest parking, and landscaping at 111-123 Fairchild Drive, APN 160-07-001 and 160-07-002, located in the Evandale Precise Plan; and

WHEREAS, on December 18, 2013, the Subdivision Committee considered the applications and recommended the tentative map be approved subject to the attached conditions of approval; and

WHEREAS, on January 21, 2014, a duly noticed Public Hearing was held by the City Council on the project and staff and public comments, if any, were received and considered;

NOW, THEREFORE, BE IT RESOLVED that pursuant to the Subdivision Map Act by the City Council of the City of Mountain View:

1. That the Council hereby finds and determines that this project will not have a significant effect on the environment because an Initial Study and Mitigated Negative Declaration have been prepared for the project and determined the environmental impacts associated with the development have been avoided or reduced to a less-than-significant level through incorporation of mitigation measures into the project.

2. That pursuant to Section 66473.5 and Subsections (a) and (b) of Section 66474 of the Government Code, and Section 28.8 of the Mountain View City Code, the City Council hereby finds that the proposed subdivision, together with the provisions for its design and improvement, is consistent with the General Plan land use designation of Medium-Density Residential of the City, including all required elements therein and with the Evandale Precise Plan and the Rowhouse Guidelines of the City applicable to said property.

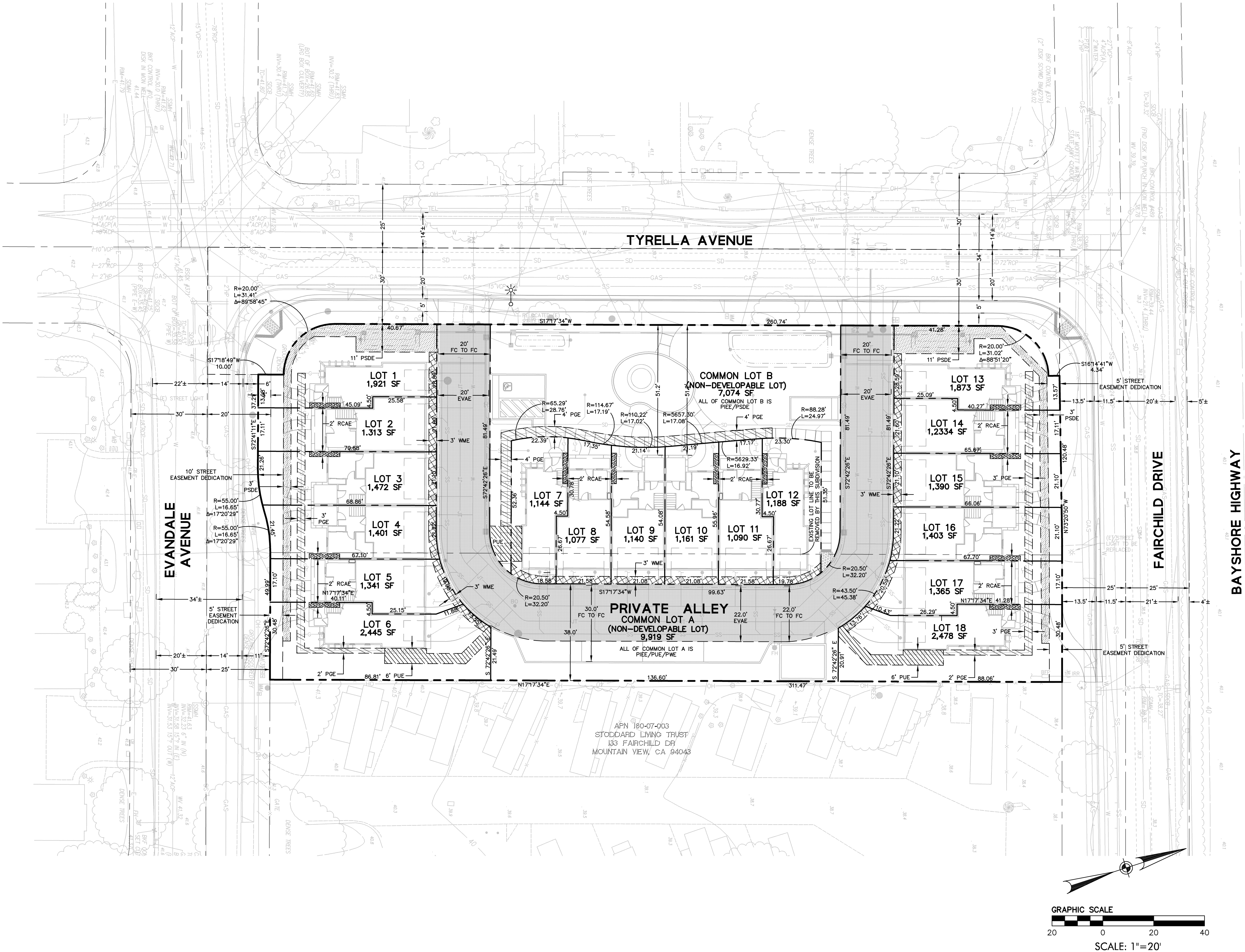
3. That the tentative map for 111-123 Fairchild Drive is hereby approved subject to the subdivider's compliance with all of those conditions of approval as required by the Subdivision Committee and attached hereto and incorporated herein by reference.

TIME FOR JUDICIAL REVIEW:

The time within which judicial review of this document must be sought is governed by California Code of Procedure Section 1094.6 as established by Resolution No. 13850 adopted by the City Council on August 9, 1983.

-----

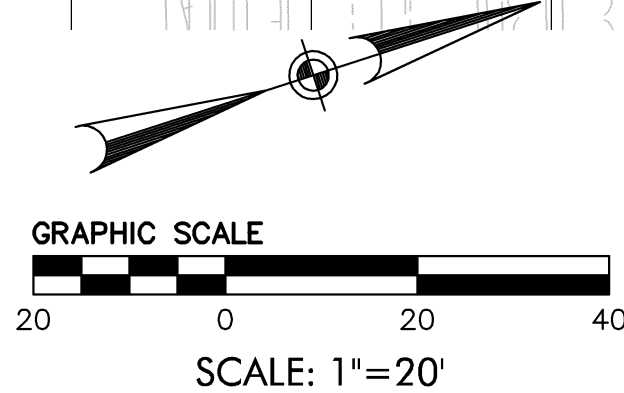
SP/7/RESO  
804-01-21-14Res-E



### LEGEND

	PROPOSED	EXISTING
PROJECT BOUNDARY	--- (dashed)	--- (dashed)
LOT LINE	--- (dashed)	--- (dashed)
STREET CENTERLINE	--- (dashed)	--- (dashed)
EASEMENT LINE	--- (dashed)	--- (dashed)
PUBLIC UTILITY EASEMENT (PUE)	▨ (diagonal lines)	▨ (diagonal lines)
PRIVATE STORM DRAIN/GAS EASEMENT (PSDE/PGE)	▨ (diagonal lines)	▨ (diagonal lines)
PUBLIC WATER METER EASEMENT (WME)	▨ (diagonal lines)	▨ (diagonal lines)
PRIVATE GAS EASEMENT (PGE)	▨ (diagonal lines)	▨ (diagonal lines)
EMERGENCY VEHICLE ACCESS EASEMENT (EVAE)	▨ (diagonal lines)	▨ (diagonal lines)
ROOF CROSS ACCESS EASEMENT (RC/AE)	▨ (diagonal lines)	▨ (diagonal lines)
EXISTING TYRELLA AVENUE STREET EASEMENT	▨ (diagonal lines)	▨ (diagonal lines)

- ### GENERAL NOTES
- OWNER: DIVIDEND HOMES, INC
  - DEVELOPER: DIVIDEND HOMES, INC  
385 WOODVIEW AVENUE, SUITE 100  
MORGAN HILL, CA, 95037  
CONTACT: JOSHUA VROTSOS (408) 779-5900
  - CIVIL ENGINEER: BKF ENGINEERS  
1650 TECHNOLOGY DRIVE, SUITE 650  
SAN JOSE, CA 95110  
CONTACT: SCOTT SCHORK/PATRICK CHAN (408) 467-9100
  - PROPERTY DESCRIPTION: PORTION OF LOT 41 & 42 "MAP OF HAMWOOD", RECORDED FEBRUARY 23, 1912 IN BOOK "N" OF MAPS, AT PAGE 86.
  - ASSESSORS PARCEL NO: 160-07-001 & 002
  - GENERAL PLAN: MEDIUM HIGH DENSITY RESIDENTIAL
  - EXISTING ZONING: PLANNED COMMUNITY/PRECISE PLAN
  - PROPOSED ZONING: R3
  - EXISTING USE: RESIDENTIAL
  - PROPOSED USE: RESIDENTIAL
  - GROSS AREA: 1,000± ACRES
  - NET AREA: 0.96± ACRES (WHEN CITY ACCEPTS STREET EASEMENT DEDICATIONS)
  - NUMBER OF UNITS: 18
  - NUMBER OF LOTS: 20 (18 DEVELOPABLE LOTS AND 2 NON-DEVELOPABLE COMMON LOTS)
  - UTILITIES:
    - A. WATER: CITY OF MOUNTAIN VIEW
    - PRIVATE STREETS: HOME OWNERS ASSOCIATION (HOA)
    - B. SANITARY SEWER: CITY OF MOUNTAIN VIEW
    - PUBLIC STREETS: HOME OWNERS ASSOCIATION (HOA)
    - PRIVATE STREETS: HOME OWNERS ASSOCIATION (HOA)
    - C. STORM DRAIN: CITY OF MOUNTAIN VIEW
    - PUBLIC STREETS: HOME OWNERS ASSOCIATION (HOA)
    - PRIVATE STREETS: PACIFIC GAS & ELECTRIC
    - D. GAS/ELECTRIC: AT&T/SBC
    - E. TELEPHONE: COMCAST
    - F. CABLE TV: COMCAST
  - BENCHMARK: ELEV 41.15 (NAVD 1988, CITY OF MOUNTAIN VIEW, NO. 111-46). BRONZE DISC SET IN TOP OF CURB AT WESTERLY SIDE OF LEONG DRIVE, OPPOSITE EVANDALE AVENUE.
  - TOPOGRAPHY: INFORMATION SHOWN IS BASED ON AERIAL SURVEY PREPARED BY AERO-GEODETIC CORP.(DATED 08/11/12), AND BASED ON FIELD SURVEY PREPARED BY BKF ENGINEERS (DATED 08/06/12).
  - LOT SIZES: THIS PROPERTY IS LOCATED WITHIN ZONE X AS SHOWN IN FLOOD INSURANCE RATE MAP COMMUNITY PANEL NO. 06085C0045H, DATED MAY 18, 2009.
  - LOT SIZES: COMMON LOT A = 9,919 SF (COMMON LOT INCLUDES EVAE, PUE & PIEE)  
COMMON LOT B = 7,074 SF (COMMON LOT INCLUDES PGE, PUE, PSDE & PIEE)  
LOT 1-18 = 26,437 SF  
TOTAL = 43,430 SF
  - EASEMENTS:
    - EVAE = EMERGENCY VEHICLE ACCESS EASEMENT
    - PUE = PUBLIC UTILITY EASEMENT
    - PSDE = PRIVATE STORM DRAIN EASEMENT
    - WME = PUBLIC WATER METER EASEMENT
    - PIEE = PRIVATE INGRESS EGRESS EASEMENT
    - PGE = PRIVATE GAS EASEMENT
    - PWE = PRIVATE WATER EASEMENT
    - RC/AE = ROOF CROSS ACCESS EASEMENT



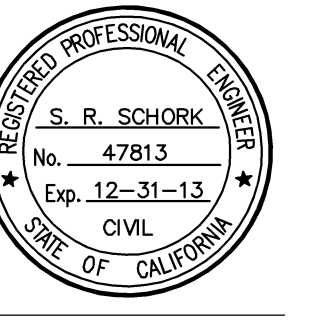
111 FAIRCHILD DRIVE  
**DIVIDEND HOMES**

MOUNTAIN VIEW, CALIFORNIA

**VESTING TENTATIVE MAP**  
 OCTOBER 25, 2013 BKF Project No.: 20126087



1650 Technology Drive, Ste. 650  
 San Jose, CA 95110  
 408.467.9100 408.467.9199



**SUBDIVISION CONDITIONS**  
**APPLICATION NO.: 455-12-TM**  
**111-123 FAIRCHILD DRIVE**

1. **MAP SUBMITTAL:** File a final map for approval and recordation in accordance with the City Code and the California Subdivision Map Act prior to the issuance of any building permit for the property within the subdivision. All existing and proposed easements are to be shown on the map. Submit two black-line copies of the map to the Public Works Department for review together with a current preliminary title report and signed survey calculations. Map submittal shall be concurrent with the improvement plan submittal.
2. **MAP DOCUMENTS:** Submit a subdivision guarantee, County Tax Collector's letter regarding unpaid taxes or assessments, and subdivision security if there are unpaid taxes or special assessments prior to the approval and recordation of the map.
3. **SOILS REPORT:** Soils and geotechnical reports prepared for the subdivision shall be indicated on the final map. Submit a copy of the report with the final map.
  - A. As required by the State Seismic Hazards Mapping Act, a project site-specific geotechnical investigation shall be conducted by a registered soils/geologist identifying any seismic hazards and recommending mitigation measures to be taken by the project. The applicant, through its registered soils engineer/geologist, shall certify the project complies with the requirements of the State Seismic Hazards Mapping Act.
4. **FINAL MAP APPROVAL:** The final map shall be signed and notarized by the owner and engineer/surveyor and submitted to the Public Works Department with an 8.5" by 11" reduction of the map. In order to place the approval of the final map on the agenda for the City Council, all related materials and agreements must be completed, signed, and received by the Public Works Department 40 calendar days prior to the Council meeting. After City Council approval, the City will sign the map and provide a Xerox Mylar copy. The applicant's title company shall have the County Recorder's Office record the original and endorse the Xerox Mylar copy. The endorsed Xerox Mylar copy and PDF shall be returned to the Public Works Department within one week after recording the map.
5. **SUBDIVISION FEES:** Pay all subdivision fees due, including park land dedication fee (approximately \$15,000 to \$30,000 per unit), in accordance with the rates in effect at the time of payment prior to the approval of the final map. No credits against the park land dedication fee will be allowed for the private open

space and recreational facilities. Provide the most current appraisal or escrow closing statement of the property with the following information to assist the City in determining the current market value of the land: (1) a brief description of the existing use of the property; (2) square footage of the lot; and (3) size and type of each building located on the property at the time the property was acquired.

6. **STREET DEDICATIONS:** Dedicate the following street easements:
  - a. Fairchild Drive: Widen Fairchild Drive an additional 5’.
  - b. Evandale Avenue: Widen Evandale Avenue 30’ from the centerline of the street (varies 5’ to 10’).
7. **CC&Rs:** Covenants, Conditions, and Restrictions (CC&Rs) for the Homeowners Association, together with a completed CC&R checklist, shall be submitted to and approved by the City Attorney and the Community Development Department prior to approval and recordation of the map. The said covenants shall include and stipulate all of the standard provisions which are shown on the attached sheet. The checklist and proposed CC&Rs shall be annotated to show exactly where each of the standard provisions have been incorporated into the CC&R document.
8. **CC&Rs, PARKING PROHIBITION:** Parking shall be prohibited within the common driveways, excluding approved guest parking, as the parking would obstruct the use of the driveway. These parking prohibitions shall be stated within the CC&Rs. Submit a copy of the CC&Rs with this provision highlighted to the Public Works Department for review and approval. The common driveway shall be signed and/or striped as “No Parking” or “No Parking – Fire Lane.”
9. **CC&Rs, UTILITY MAINTENANCE PLAN:** On-site water, sanitary sewer, and storm drainage facilities shall be privately maintained. CC&Rs shall include a provision that the homeowners association prepare a private utility maintenance plan for the on-site water, sanitary sewer, and storm drainage facilities. The maintenance plan shall include such elements as flushing of the sanitary sewer and storm lines, cleaning of storm drain inlets and grates, and inspection of the water system (including flushing and exercising of valves and blowoffs). CC&Rs shall also include a provision that the homeowners association prepare a sanitary sewer overflow plan, which includes elements such as 24-hour contact information, response times, confinement, and methods to contain and remediate spills.
10. **PUBLIC AND COMMON IMPROVEMENTS:** Install or reconstruct standard public and private common improvements that are required for the development and as required by Chapters 27 and 28 of the Mountain View Code. The public improvements on Fairchild Drive, Tyrella Avenue, and Evandale Avenue include,

but are not limited to: new curb, gutter, sidewalk, and driveways; widening the narrowed portions of Tyrella Avenue and Evandale Avenue; new streetlights; planter strip landscaping and irrigation; utility services; and undergrounding of overhead utility lines and services. The on-site common improvements include, but are not limited to: private common driveway and underground utility services for water, sewer, and storm.

- a. **IMPROVEMENT AGREEMENT:** The property owner must sign a Public Works Department improvement agreement for the installation of the public and private improvements prior to the approval of the final map. Sign a Public Works Department faithful performance bond (100 percent) and materials/labor bond (100 percent) securing the installation and warranty of the off-site and on-site common improvements in a form approved by the City Attorney's Office. The surety (bond company) must be listed as an acceptable surety on the most current Department of the Treasury's Listing of Approved Sureties on Federal Bonds, Department Circular 570. This list of approved sureties is available through the Internet at <http://www.fms.treas.gov/c570/index.html>. The bond amount must be below the underwriting limitation amount listed on the Department of the Treasury's Listing of Approved Sureties. The surety must be licensed to do business in California. Guidelines for certificates of deposit are available at the Public Works Department.
  - b. **INSURANCE:** Provide a certificate of insurance and endorsement naming the City an additional insured from the entity that will sign the improvement agreement prior to the approval of the final map. The insurance coverage amounts are a minimum of One Million Dollars (\$1,000,000) commercial general liability, automobile liability, and Workers' Compensation. The insurance requirements are available from the Public Works Department.
11. **PUBLIC IMPROVEMENT PLANS:** Prepare public improvement plans in accordance with Chapter 28 of the City Code, the City's Standard Design Criteria, and the conditions of approval of the subdivision. The plans are to be drawn on 24" by 36" sheets at a minimum scale of 1" = 20'. The plans shall be stamped by a registered civil engineer and shall show all public improvements and other applicable work within the public right-of-way. A traffic control plan indicating the work areas, delineators, signs, and other traffic control measures is required for work that impacts traffic on an existing street. Improvement plans (nine sets), construction cost estimate, and copy of the current preliminary title report or property deed must be submitted together as a separate package concurrent with the first submittal of the building plans. The improvement plans must be approved and signed by the Public Works Department. After the plans have been signed by the Public Works Department, 10 black-line sets, one Xerox Mylar (4 mil)

set of the plans, and CD with CAD file and PDF must be submitted to the Public Works Department prior to the approval of the final map.

12. **COMMON IMPROVEMENT PLANS:** Prepare on-site common improvement plans consisting of the proposed demolition, fill, grading, retaining walls, drainage, private streets, common driveways, common utilities, public utilities, and other applicable improvements in accordance with Chapter 28 of the City Code, the Standard Design Criteria for Common Green and Townhouse-Type Condominiums, and the conditions of approval of the subdivision. The plans are to be drawn on 24" by 36" sheets at a minimum scale of 1" = 20'. The improvement plans (nine sets) and completed infrastructure data form must be submitted together as a separate package concurrent with the first submittal of the building plans. The improvement plans must be approved and signed by the Public Works Department. After the improvement plans have been signed by the Public Works Department, 10 black-line sets, one Xerox Mylar (4 mil) set of the plans, and CD with CAD file and PDF must be submitted to the Public Works Department prior to the approval of the final map. Where both public and common improvement plans are required, the plans shall be combined into one set of plans.
13. **INFRASTRUCTURE QUANTITIES:** Submit a completed construction cost estimate form indicating the quantities of the public and common improvements with the submittal of the improvement plans. The construction cost estimate is used to estimate the cost of improvements and to determine the Public Works plan check and inspection fees. The construction cost estimate is to be prepared by the civil engineer preparing the improvement plans and stamped and signed.
14. **UNDERGROUNDING OF OVERHEAD SERVICES:** All new and existing electric, telephone, and cable television services serving the subdivision are to be placed underground (including transformers). The undergrounding of the new and existing electric, telephone, and cable television services are to be completed prior to issuance of an occupancy certificate for any new buildings within the subdivision.
15. **JOINT UTILITY PLANS:** Submit joint utility plans showing the location of the proposed electric, gas, telephone, and cable television conduits and vaults. These plans shall be combined with and made part of the improvement plans. Dedicate public utility easements that are necessary for the common utility on the final map.
16. **UNDERGROUNDING OF OVERHEAD LINES:** Underground existing overhead telephone, electric, and cable television facilities fronting the property along Evandale Avenue, unless waived by the City Council after consideration of the recommendation of the Public Works Director due to unusual or impractical

circumstances. The undergrounding work shall be constructed in conjunction with any applicable off-site improvements and completed prior to issuance of an occupancy certificate for any new unit. All poles fronting the property are to be removed, with the exception of poles at the corners of the property that are needed to transition from the proposed underground utility lines fronting the subject property to the overhead utility lines fronting the adjacent properties. Prior to approval of the final map, subdivider shall sign an underground utility agreement and provide a performance bond or other suitable guarantee securing performance of the work in the estimated amount of the cost of underground work until such time as prepaid or secured contracts are entered into by the subdivider with PG&E, AT&T (SBC), and Comcast that provides for all of the required underground work. If the undergrounding requirement is waived, subdivider shall fulfill whatever substitute conditions the City shall impose prior to final map approval.

17. **UTILITY MAINTENANCE:** On-site water, sanitary sewer, and storm drainage facilities shall be privately maintained.
18. **RETAINING WALL:** Retaining walls shall have a maximum height of 18", unless an exception is granted by the Community Development and Public Works Departments. Retaining walls along the perimeter of the subdivision shall be maintained by the homeowners association. The maintenance of the retaining walls shall be included in the CC&Rs. A private easement for the retaining walls shall be shown on the final map.
19. **SURFACE DRAINAGE RELEASE:** Provide a surface stormwater release for the lots, driveways, alleys, and private streets that prevents the residential buildings from being flooded in the event the storm drainage system becomes blocked or obstructed.
20. **SURFACE DRAINAGE:** Each residential lot shall be designed to drain toward the streets, alleys, common driveways, or common areas. The drainage system for the privately owned lots shall be designed such that the drainage system does not cross the common property lines unless an exception is approved by the Public Works Department due to unavoidable circumstances (such as to provide drainage to an existing Heritage tree).
21. **SUBDIVISION AND DESIGN CRITERIA PROVISIONS:** It is the applicant's responsibility to comply with relevant provisions of Chapter 28 of the City Code and with the City's Design Criteria for Common Green Developments and Townhouse-Type Condominiums.



22. **CONSISTENCY WITH OTHER APPROVALS:** This map shall be consistent with all requirements of the Planned Unit Development Permit, Application No. 454-12-PUD. All conditions of approval imposed under that application shall remain in full force and effect and shall be met prior to approval of the final map.
23. **APPROVAL EXPIRATION:** If the map is not completed within twenty-four (24) months from the date of this approval, this map shall expire.

SP/3/CDD  
804-12-03-13SD

DRAFT