

CITY OF MOUNTAIN VIEW
RESOLUTION NO. 18812
SERIES 2023

A RESOLUTION OF THE CITY COUNCIL OF THE CITY OF MOUNTAIN VIEW
ORDERING THE VACATION OF PUBLIC STREET AND SERVICE EASEMENTS
WITHIN THE NORTH BAYSHORE MASTER PLAN ON A 153-ACRE SITE
GENERALLY LOCATED NORTH OF U.S. 101 BOUNDED BY CHARLESTON ROAD
TO THE NORTH, STEVENS CREEK TO THE EAST, SPACE PARK WAY TO THE SOUTH,
AND HUFF AVENUE TO THE WEST

WHEREAS, on May 9, 2023, by its adoption of Resolution No. 18788, Series 2023, the City Council of the City of Mountain View, pursuant to the provisions of Part 3, Division 9 (Sections 8300 through 8363) of the Streets and Highways Code of the State (the Public Streets, Highways and Service Easement Vacation Law), declared its intention to vacate public street and service easements within the North Bayshore Master Plan on a 153-acre site generally located north of U.S. 101 bounded by Charleston Road to the north, Stevens Creek to the east, Space Park Way to the south, and Huff Avenue to the west; and

WHEREAS, by the said Resolution No. 18788, which Resolution is incorporated by reference as if fully set forth herein, the City Council set Tuesday, June 13, 2023, at 6:30 p.m. as the date and time for hearing all persons interested in or objecting to the proposed vacation, and directed the City Clerk to give notice of said hearing in the manner prescribed by law; and

WHEREAS, on June 13, 2023, the said public hearing was held and evidence was submitted to the City Council, bearing upon the present and prospective use of the street and public easements; and

WHEREAS, this vacation is necessary for the development, Application No. PL-2021-181, for a Planned Community Permit for a master plan to construct up to 7,000 residential units, 3.11 million square feet of office (including 1.3 million square feet of bonus floor area as net new office), approximately 14.8 acres of dedicated public park land, approximately 11.3 acres of privately owned, publicly accessible open space, 233,990 square feet of retail, 55,000 square feet of community space, an optional private district utilities system, and district parking garages all on an approximately 153-acre site generally located north of U.S. 101 bounded by Charleston Road to the north, Stevens Creek to the east, Space Park Way to the south, and Huff Avenue to the west; and

WHEREAS, this development shall be completed in multiple phases. The proposed vacations may also occur in phases with only portions of the easements being vacated with each development phase; now, therefore, be it

RESOLVED: that the City Council of the City of Mountain View finds, from all the evidence submitted, and the street and public easements described in Exhibit A and depicted in Exhibit B, attached hereto and incorporated herein by reference, are unnecessary for present and prospective public uses and that, therefore, this body orders that the said public easements described herein be, and the same are hereby, vacated, subject to the conditions specified in this Resolution; and be it

FURTHER RESOLVED: that the City Council of the City of Mountain View, in accordance with Streets and Highways Code Section 8324(b), finds that this Resolution shall not be recorded until the following conditions have been satisfied:

1. File with the City of Mountain View approved improvement plans, agreements, and performance bonds as a condition of approval for the project.
2. Submit utility clearance letters from CPUC regulated utilities stating that the easements are no longer needed.
3. All public utilities within the street and/or public service easement have been relocated or abandoned per City and/or utility company standards and new easements dedicated.
4. For public easements within the footprint of future buildings where the utility must be relocated prior to the issuance of building permit, Item 1 may be exempted with the approval of the Public Works Director.

This Resolution shall be recorded for each portion of public street and service easement to be vacated in accordance with approved City recording instructions. The recording documents shall include a plat and legal description of the portion of the public street or service easement to be vacated; and be it

FURTHER RESOLVED: that as finding of fact supporting its decision vacating the said public street and service easements with the North Bayshore Master Plan, this body finds as follows, and, in addition, incorporates by reference, as fully set forth herein, the Council report dated June 13, 2023:

1. The street easements are unnecessary for present or prospective public use with the reconfiguration of the circulation network in accordance with the North Bayshore Master Plan.
2. The existing utilities within the easements are proposed to either be removed or relocated as part of this project, and the existing easements are unnecessary for present or prospective public use.

3. New street and public service easements to be dedicated are shown on the Vesting Tentative Map (Application No. PL-2022-052).

The foregoing resolution was regularly introduced and adopted at a Regular Meeting of the City Council of the City of Mountain View, duly held on the 13th day of June 2023, by the following vote:

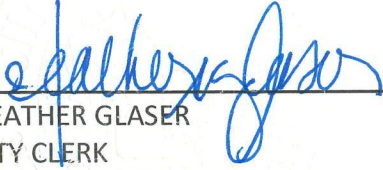
AYES: Councilmembers Abe-Koga, Kamei, Matichak, Ramirez, Ramos, Vice Mayor Showalter, and Mayor Hicks

NOES: None

ABSENT: None

ATTEST:

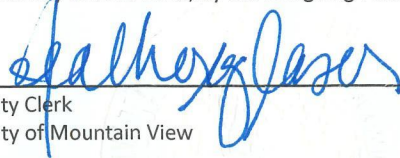
APPROVED:



HEATHER GLASER
CITY CLERK

ALISON HICKS
MAYOR

Pursuant to Mountain View Charter § 709(b), I do hereby certify that the foregoing is an original or a correct copy of the Resolution passed and adopted by the City Council of the City of Mountain View at a Regular Meeting held on the 13th day of June 2023, by the foregoing vote.



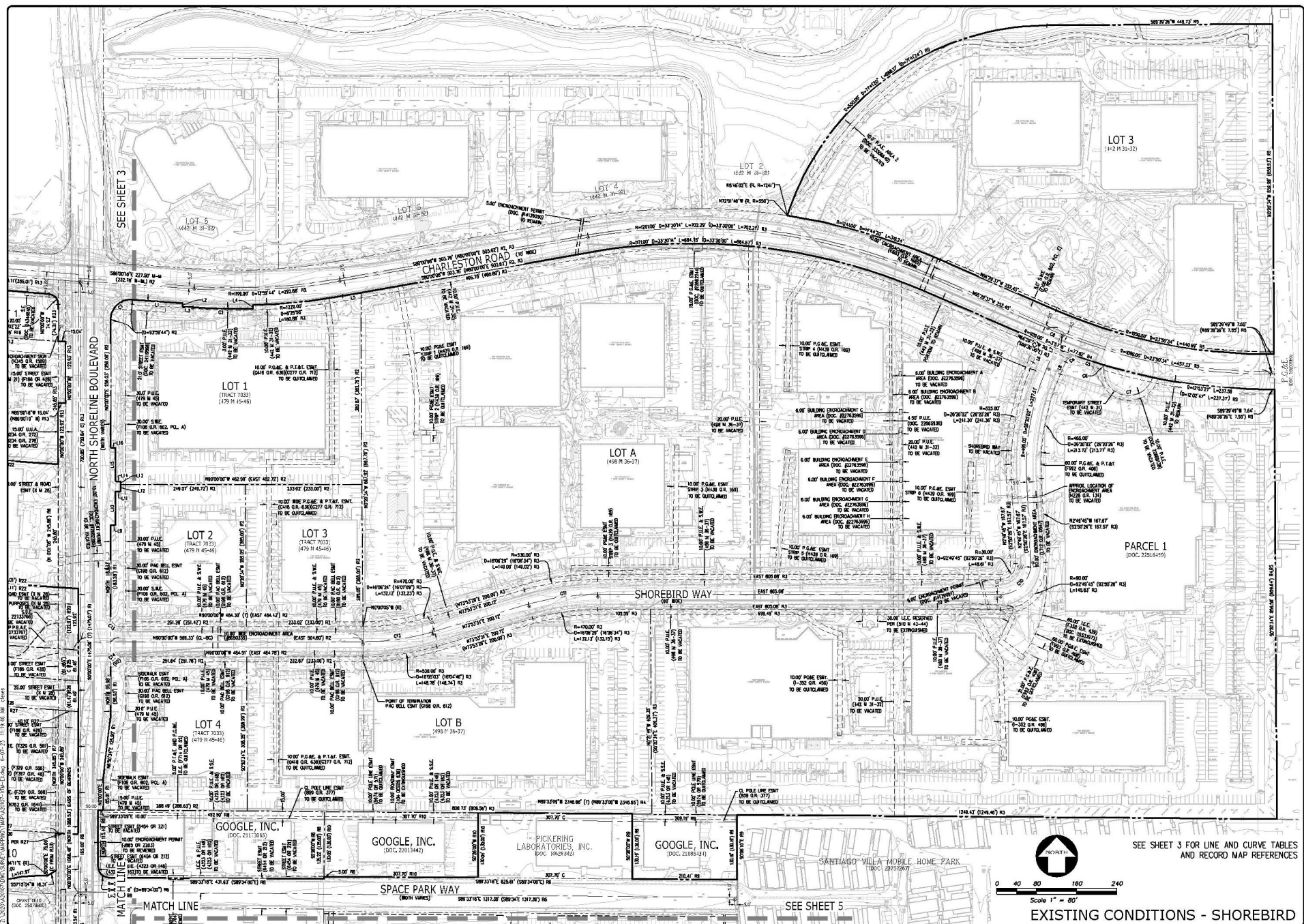
City Clerk
City of Mountain View

DP/2/RESO
807-06-13-23r

- Exhibits: A. Table of Public Street and Service Easements to Be Vacated
B. Map of Public Street and Service Easements to Be Vacated

	Easement Title	Document Reference	In Favor of / For the Purpose of	Affected Project APN(s)	Property Addresses	Easement Area to be Vacated (V)
1	Street & Utility Easement	0222 O.R. 510	City of Mountain View	116-10-034	1400 SHORELINE BLVD	27,443
2	Sanitary Sewer Easement (S.S.E.)	0222 O.R. 515	City of Mountain View	116-10-034	1400 SHORELINE BLVD	14,915
3	Temporary Street Easement	442 M 31	City of Mountain View	116-11-030, 116-11-038, 116-11-039	030: 1225 CHARLESTON RD; 1245 CHARLESTON RD; 1215 CHARLESTON RD; 1295 CHARLESTON RD; 1230 SHOREBIRD WY; 1310 SHOREBIRD WY; 1350 SHOREBIRD WY 038; 1201 CHARLESTON RD; 1365 SHOREBIRD WY; 1345 SHOREBIRD WY; 1355 SHOREBIRD WY 039; 1395 CHARLESTON RD; 1397 CHARLESTON RD; 1399 CHARLESTON RD	3,724
4	Public Utility Easement (P.U.E.)	442 M 31	City of Mountain View	116-11-030, 116-11-038, 116-11-039	030: 1225 CHARLESTON RD; 1245 CHARLESTON RD; 1215 CHARLESTON RD; 1295 CHARLESTON RD; 1230 SHOREBIRD WY; 1310 SHOREBIRD WY; 1350 SHOREBIRD WY 038; 1201 CHARLESTON RD; 1365 SHOREBIRD WY; 1345 SHOREBIRD WY; 1355 SHOREBIRD WY 039; 1395 CHARLESTON RD; 1397 CHARLESTON RD; 1399 CHARLESTON RD	34,215
5	Public Utility Easement (P.U.E.)	479 M 45	City of Mountain View	116-11-021, 116-11-022, 116-11-024, 116-11-025, 116-11-039	021: 1397 SHOREBIRD WY 022: 1383 SHOREBIRD WY 024: 1380 SHOREBIRD WY 025: 1390 SHOREBIRD WY	34,490
6	Sidewalk Easement (S.W.E.)	479 M 45	City of Mountain View	116-11-024, 116-11-025	024: 1380 SHOREBIRD WY 025: 1390 SHOREBIRD WY	4,777
7	Public Utility Easement (P.U.E.)	498 M 36	City of Mountain View	116-11-028, 116-11-030, 116-11-038	028: 1371 SHOREBIRD WY; 1375 SHOREBIRD WY 030: 1225 CHARLESTON RD; 1245 CHARLESTON RD; 1215 CHARLESTON RD; 1295 CHARLESTON RD; 1230 SHOREBIRD WY; 1310 SHOREBIRD WY; 1350 SHOREBIRD WY 038; 1201 CHARLESTON RD; 1365 SHOREBIRD WY; 1345 SHOREBIRD WY; 1355 SHOREBIRD WY	45,105
8	Sidewalk Easement (S.W.E.)	498 M 36	City of Mountain View	116-11-028, 116-11-030, 116-11-038	028: 1371 SHOREBIRD WY; 1375 SHOREBIRD WY 030: 1225 CHARLESTON RD; 1245 CHARLESTON RD; 1215 CHARLESTON RD; 1295 CHARLESTON RD; 1230 SHOREBIRD WY; 1310 SHOREBIRD WY; 1350 SHOREBIRD WY 038; 1201 CHARLESTON RD; 1365 SHOREBIRD WY; 1345 SHOREBIRD WY; 1355 SHOREBIRD WY	18,005
9	Public Utility Easement (P.U.E.)	505 M 37	City of Mountain View	116-13-027	1555 PLYMOUTH ST	1,535
10	Street Easement (S.E.)	539 M 21	City of Mountain View	116-10-089	1824 SHORELINE BLVD; 1842 SHORELINE BLVD; 1455 CHARLESTON RD	3,619
11	Street Easement (S.E.)	557 M 1	City of Mountain View	116-10-102, 116-10-104, 116-10-105	102: 1585 CHARLESTON RD; 1565 CHARLESTON RD 104: 1010 JOAQUIN RD 105: 1545 CHARLESTON RD	57,833
12	Public Service Easement (P.S.E.)	557 M 1	City of Mountain View	116-10-102, 116-10-104, 116-10-105	102: 1585 CHARLESTON RD; 1565 CHARLESTON RD 104: 1010 JOAQUIN RD 105: 1545 CHARLESTON RD	40,927
13	Sidewalk Easement (S.W.E.)	557 M 1	City of Mountain View	116-10-102, 116-10-104, 116-10-105	102: 1585 CHARLESTON RD; 1565 CHARLESTON RD 104: 1010 JOAQUIN RD 105: 1545 CHARLESTON RD	112,940
14	Public Service Easement (P.S.E.)	566 M 36	City of Mountain View	116-10-111	1015 JOAQUIN STREET	8,980
15	Sidewalk Easement (S.W.E.)	566 M 36	City of Mountain View	116-10-111	1015 JOAQUIN STREET	23,733
16	Street Easement	566 M 36	City of Mountain View	116-10-111	1015 JOAQUIN STREET	19,137
17	Sidewalk Easement (S.W.E.)	570 M 32	City of Mountain View	116-10-095	1500 PLYMOUTH ST; 1550 PLYMOUTH ST	50,413
18	Public Service Easement (P.S.E.)	570 M 32	City of Mountain View	116-10-095	1500 PLYMOUTH ST; 1550 PLYMOUTH ST	20,673
19	Street Easement (S.E.)	570 M 32	City of Mountain View	116-10-095	1500 PLYMOUTH ST; 1550 PLYMOUTH ST	28,466
20	Public Utility Easement (P.U.E.)	5818 O.R. 183	City of Mountain View	116-10-101	1435 PLYMOUTH ST; 1479 PLYMOUTH ST; 1477 PLYMOUTH ST	2,107
21	Street Easement (S.E.)	5818 O.R. 183	City of Mountain View	116-10-101	1435 PLYMOUTH ST; 1479 PLYMOUTH ST; 1477 PLYMOUTH ST	2,107
22	Public Service Easement (P.S.E.)	598 M 23	City of Mountain View	116-10-108	1053 JOAQUIN RD; 1055 JOAQUIN RD	13,601
23	Street Easement	598 M 23	City of Mountain View	116-10-108	1053 JOAQUIN RD; 1055 JOAQUIN RD	19,737
24	Sidewalk Easement (S.W.E.)	598 M 23	City of Mountain View	116-10-108	1053 JOAQUIN RD; 1055 JOAQUIN RD	36,074
25	Public Utility Easement (P.U.E.)	608 M 20	City of Mountain View	116-10-101	1435 PLYMOUTH ST; 1479 PLYMOUTH ST; 1477 PLYMOUTH ST	254
26	Sidewalk Easement (S.W.E.)	608 M 20	City of Mountain View	116-10-101	1435 PLYMOUTH ST; 1479 PLYMOUTH ST; 1477 PLYMOUTH ST	254
27	Street Easement (S.E.)	608 M 20	City of Mountain View	116-10-101	1435 PLYMOUTH ST; 1479 PLYMOUTH ST; 1477 PLYMOUTH ST	508
28	Street & Utility Easement	6153 O.R. 169	City of Mountain View	116-13-034	1400 SHORELINE BLVD	11,096
29	Street Easement	9874 O.R. 685	City of Mountain View	116-14-095	1230 PEAR AVE	3,946
30	Utilities Easement	9874 O.R. 685	City of Mountain View	116-14-095	1230 PEAR AVE	3,946
31	Landscape Easement (L.E.)	Doc. 15155449	City of Mountain View	116-10-088	1431 PLYMOUTH ST	996
32	Sidewalk Easement (S.W.E.)	Doc. 15155449	City of Mountain View	116-10-088	1431 PLYMOUTH ST	996
33	Sidewalk Easement (S.W.E.)	Doc. 19591791	City of Mountain View	116-10-107	1053 JOAQUIN RD; 1055 JOAQUIN RD	1,429
34	Public Service Easement (P.S.E.)	Doc. 19591792	City of Mountain View	116-10-107	1053 JOAQUIN RD; 1055 JOAQUIN RD	2,366
35	Street Easement (S.E.)	Doc. 19591792	City of Mountain View	116-10-107	1053 JOAQUIN RD; 1055 JOAQUIN RD	2,366
36	Public Utility Easement (U.E.)	Doc. 22665938	City of Mountain View	116-11-030	1225 CHARLESTON RD; 1245 CHARLESTON RD; 1215 CHARLESTON RD; 1295 CHARLESTON RD; 1230 SHOREBIRD WY; 1310 SHOREBIRD WY; 1350 SHOREBIRD WY	2,715
37	Public Access Easement (P.A.E.)	Doc. 22869138	City of Mountain View	116-11-038	1201 CHARLESTON RD; 1365 SHOREBIRD WY; 1345 SHOREBIRD WY; 1355 SHOREBIRD WY	2,375
38	Public Access Easement (P.A.E.)	Doc. 23506640	City of Mountain View	116-11-012	1200 CHARLESTON RD; 1230 CHARLESTON RD; 1220 CHARLESTON RD; 1206 CHARLESTON RD; 1210 CHARLESTON RD	12,139
39	Street Easement	Doc. 24119568	City of Mountain View	116-11-039	1395 CHARLESTON RD; 1397 CHARLESTON RD; 1399 CHARLESTON RD	1,943
40	Street Easement (S.E.)	Doc. 24344845	City of Mountain View	116-10-084	1890 N SHORELINE BLVD	658
41	Sidewalk Easement (S.W.E.)	F106 O.R. 602	City of Mountain View	116-11-021, 116-11-025, 116-11-039	021: 1397 SHOREBIRD WY 025: 1390 SHOREBIRD WY 039: 1395 CHARLESTON RD; 1397 CHARLESTON RD; 1399 CHARLESTON RD	28,470
42	Roadway Purposes	F186 O.R. 428	City of Mountain View	116-10-084, 116-10-89, 116-10-077, 116-10-078, 116-10-079, 116-10-109, 116-10-088	SHORELINE BLVD (1843.95+)	11,063
43	Sidewalk Easement (S.W.E.)	F329 O.R. 556	City of Mountain View	116-10-080	1708 SHORELINE BLVD; 1742 SHORELINE BLVD	5,528
44	Public Utility Easement (U.E.)	F329 O.R. 556	City of Mountain View	116-10-080	1708 SHORELINE BLVD; 1742 SHORELINE BLVD	5,528
45	Public Utility Easement (P.U.E.)	F329 O.R. 566	City of Mountain View	116-10-080	1708 SHORELINE BLVD; 1742 SHORELINE BLVD	2,453
46	Sidewalk Easement (S.W.E.)	F329 O.R. 561	City of Mountain View	116-10-080	1708 SHORELINE BLVD; 1742 SHORELINE BLVD	5,176
47	Utility Easement (U.E.)	F329 O.R. 561	City of Mountain View	116-10-080	1708 SHORELINE BLVD; 1742 SHORELINE BLVD	5,176
48	Public Utility Easement (P.U.E.)	J895 O.R. 732	City of Mountain View	116-10-101	1435 PLYMOUTH ST; 1479 PLYMOUTH ST; 1477 PLYMOUTH ST	1,120
49	Sidewalk Easement (S.W.E.)	J895 O.R. 732	City of Mountain View	116-10-101	1435 PLYMOUTH ST; 1479 PLYMOUTH ST; 1477 PLYMOUTH ST	1,120
50	Sidewalk Easement (S.W.E.)	K103 O.R. 1167	City of Mountain View	116-10-107	1053 JOAQUIN RD; 1055 JOAQUIN RD	364
51	Public Utility Easement (P.U.E.)	K849 O.R. 113	City of Mountain View	116-10-095	1500 PLYMOUTH ST; 1550 PLYMOUTH ST	6,200
52	Public Service Easement (P.S.E.)	M982 O.R. 1018	City of Mountain View	116-10-102 AND 105	1545 CHARLESTON RD; 1565 CHARLESTON RD	3,550
53	Sidewalk Easement (S.W.E.)	M982 O.R. 1018	City of Mountain View	116-10-102 AND 105	1545 CHARLESTON RD; 1565 CHARLESTON RD	3,550
54	Street Easement (S.E.)	N763 O.R. 1641	City of Mountain View	116-10-080	1708 SHORELINE BLVD; 1742 SHORELINE BLVD	1,223
55	Street Easement	W M 24	City of Mountain View	116-14-028, 116-10-095	1220 PEAR AVE	4,498

56	Street and Road Easement	X M 28	City of Mountain View	116-10-077,116-10-078, 116-10-079	077 ; 1804 N SHORELINE BLVD 078 ; 1764 SHORELINE BLVD 079 ; 1758 SHORELINE BLVD 090 ; 1808 SHORELINE BLVD; 1806 SHORELINE BLVD	19,670
57	Street Easement	479 M 45	City of Mountain View	Shorebird Way	Shorebird Way	109,534
58	Street Easement	498 M 36	City of Mountain View	Shorebird Way	Shorebird Way	30,436



NO.	REVISION	BY	DATE
1	ISSUED FOR PERMITTING	AW	04/11/2023
2	REVISION	AW	
3	REVISION	AW	
4	REVISION	AW	
5	REVISION	AW	
6	REVISION	AW	
7	REVISION	AW	
8	REVISION	AW	
9	REVISION	AW	
10	REVISION	AW	

KIER+WRIGHT
 3700 Sand Island Road, Suite 212
 San Diego, California 92161
 Phone: (619) 571-9465
 www.kierwright.com

**NORTH BAYSHORE MASTER PLAN
 VESTING TENTATIVE MAP**
 FOR
GOOGLE LLC
 CALIFORNIA
 MOUNTAIN VIEW

DATE	APRIL, 2023
SCALE	AS SHOWN
SURVIVOR	RSU
DRAWN BY	CT
JOB NO.	420101
SHEET	6
OF 16 SHEETS	

SEE SHEET 3 FOR LINE AND CURVE TABLES
 AND RECORD MAP REFERENCES

Scale 1" = 80'

EXISTING CONDITIONS - SHOREBIRD

