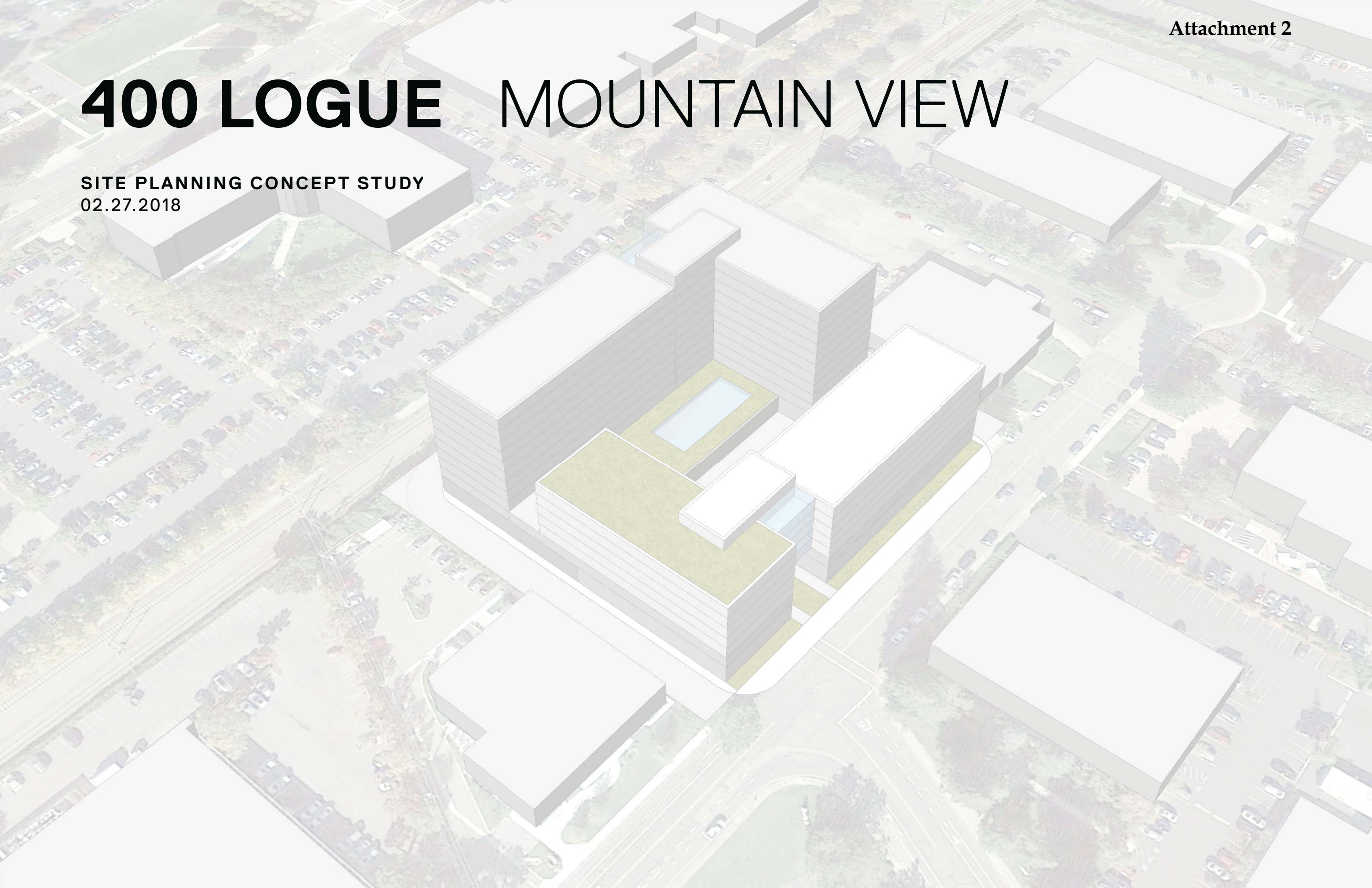


400 LOGUE MOUNTAIN VIEW

SITE PLANNING CONCEPT STUDY
02.27.2018



BUILDING HEIGHT LIMIT IMPOSED BY MOFFETT FEDERAL AIRFIELD

Building Height Restriction: 182' Above Sea Level
 (Moffett Federal Airfield Comprehensive Land Use Plan)

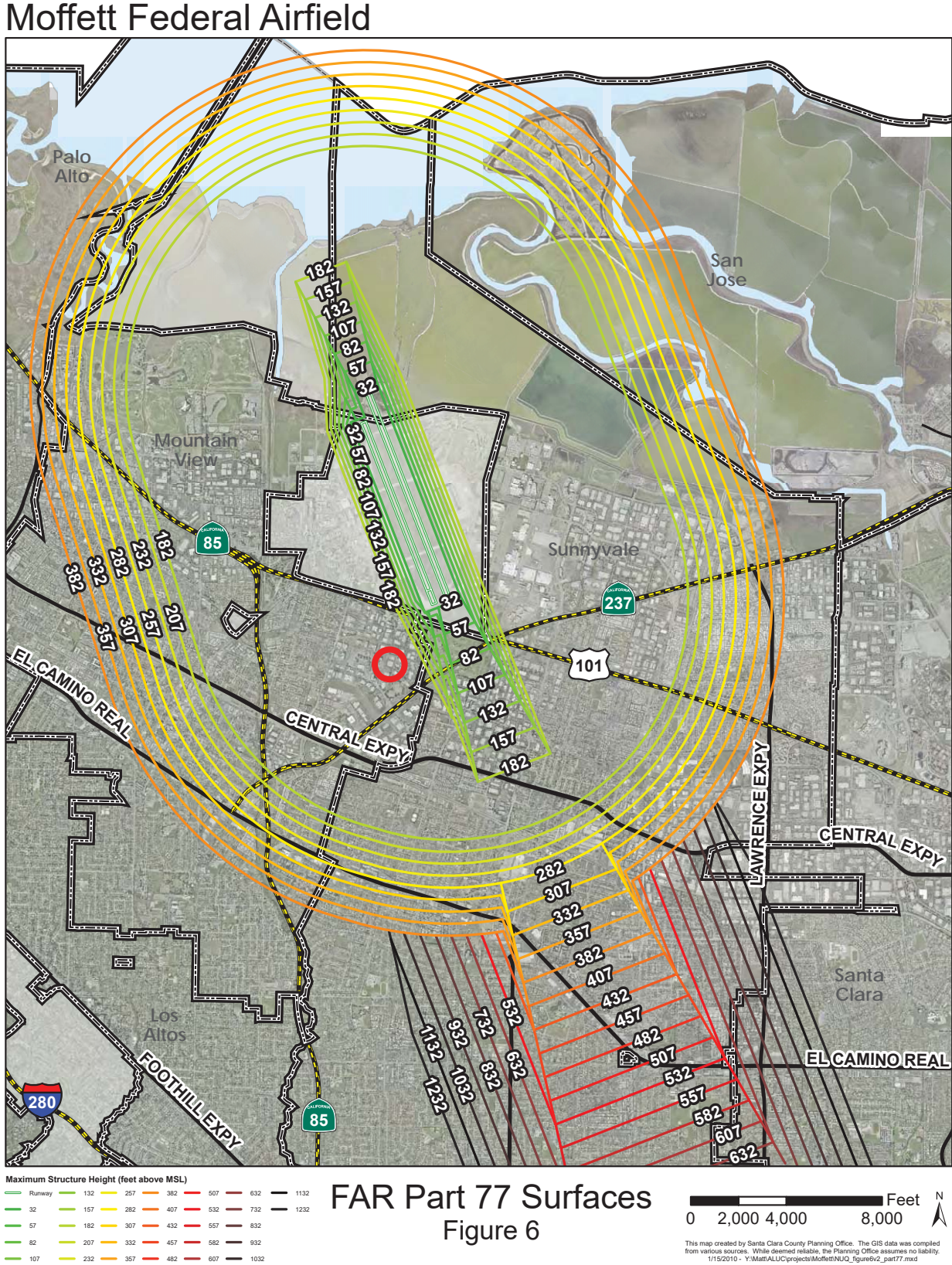
Site Elevation : ~54' Above Sea Level

400 Logue Height Limit Above Grade: ~128' Above Grade

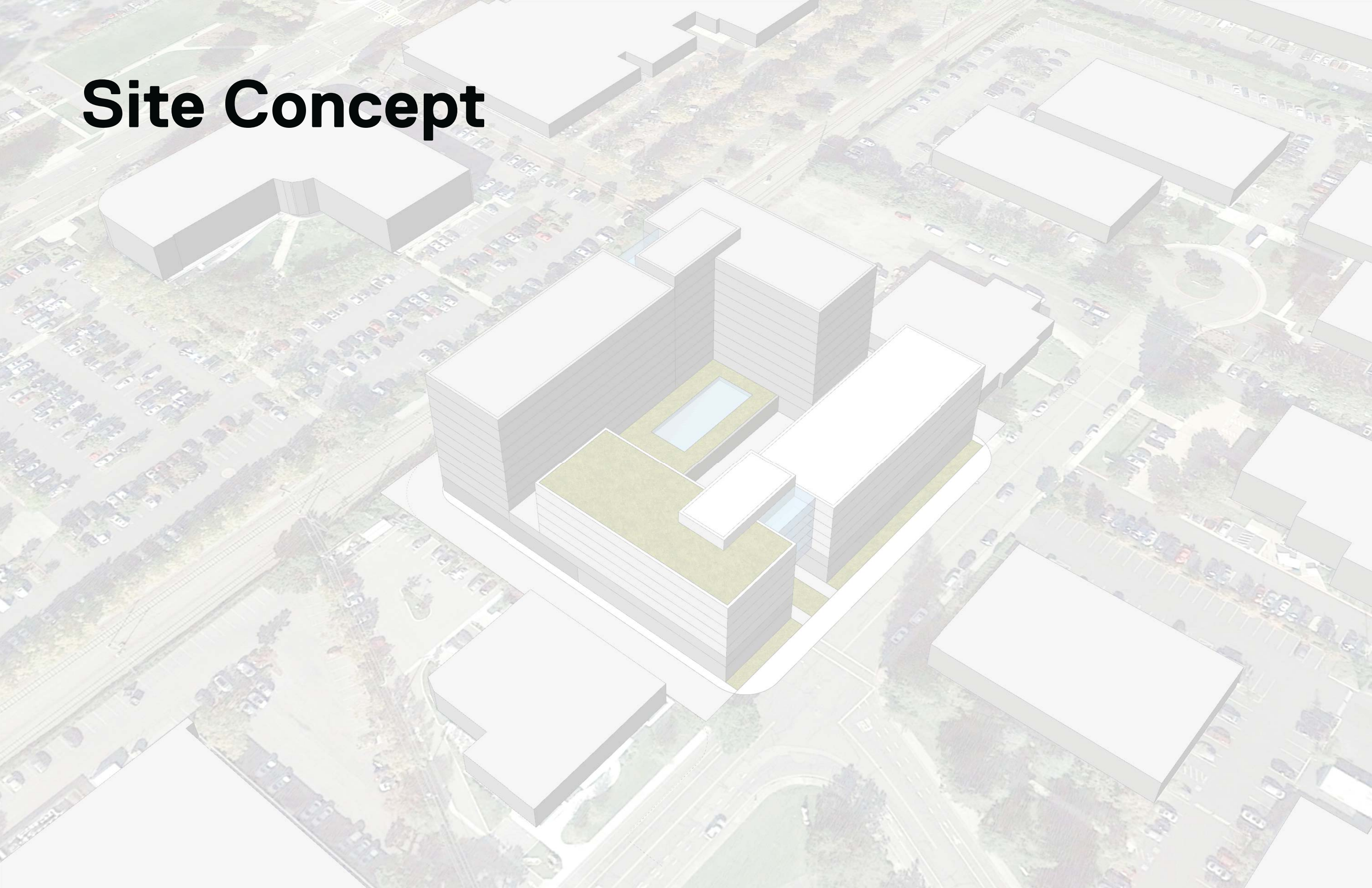
The following options have been limited to 11 Stories (116' T.O. Roof) Leaving ~12' for mechanical equipment, roof access, and elevator overruns.

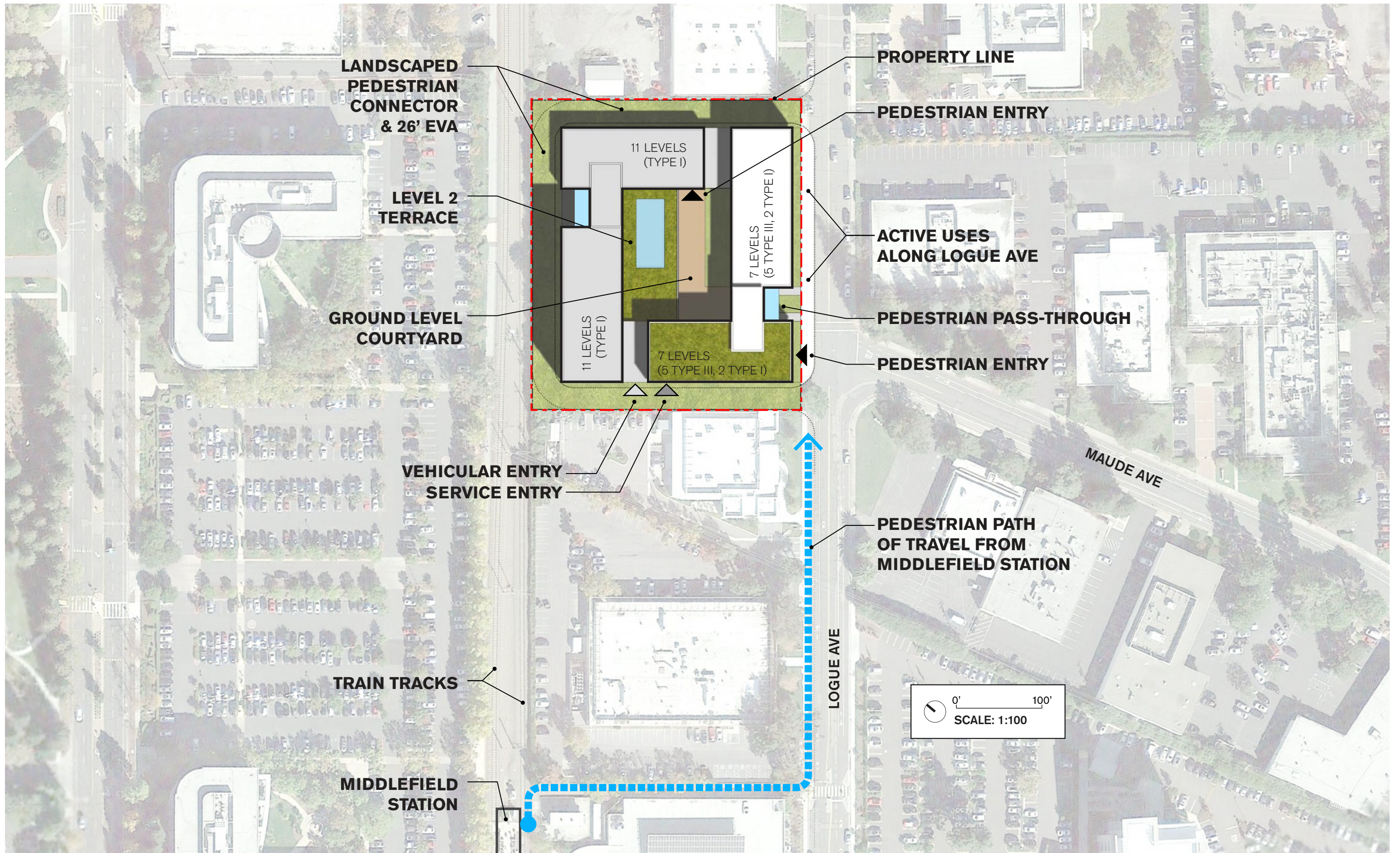
ALLOWABLE FAR / GSF

Site Area	110,980 SF
FAR	3.5
Max GSF	388,430 SF
MAX GSF +72k SF	460,430 SF

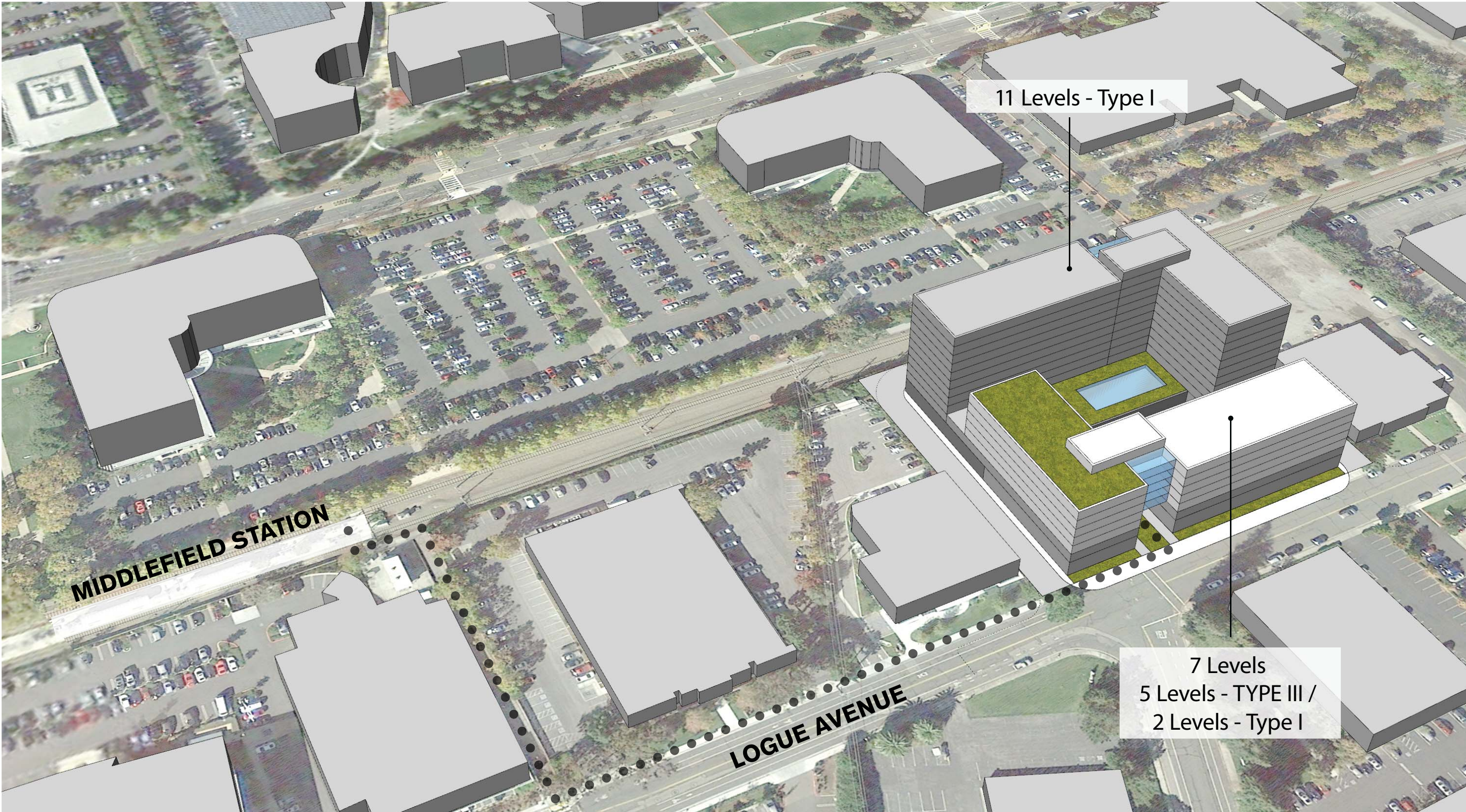


Site Concept

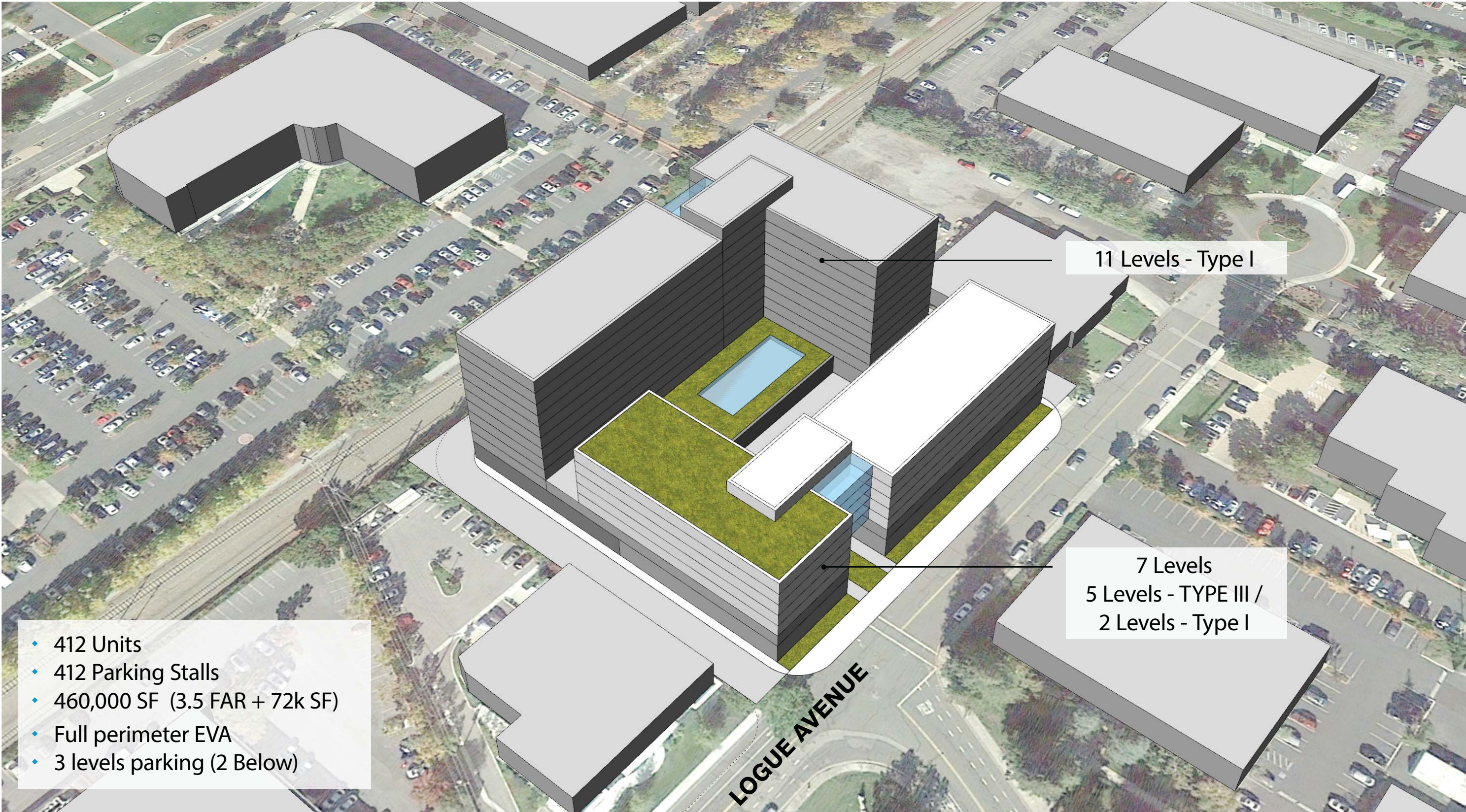




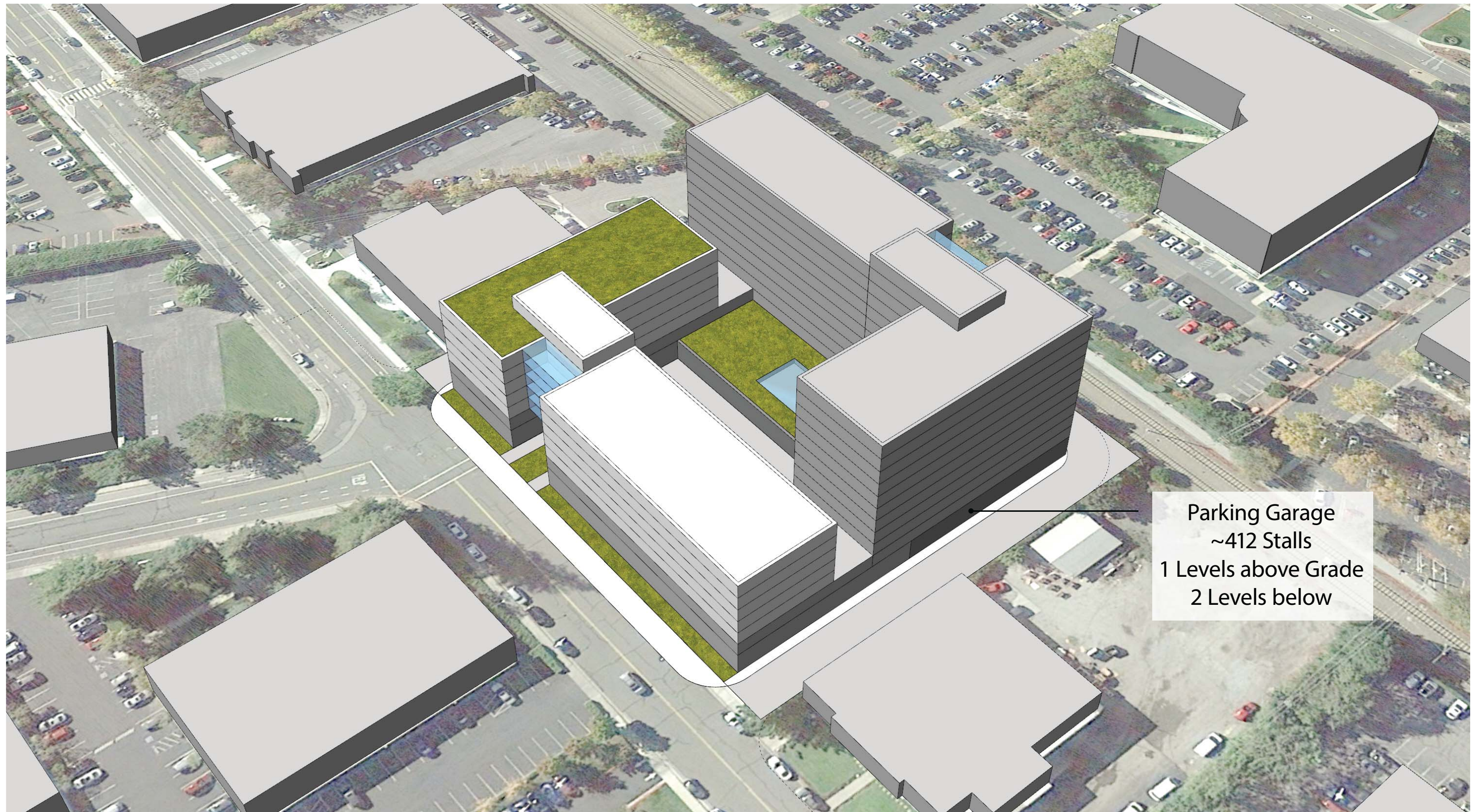
AERIAL LOOKING NORTHWEST



AERIAL LOOKING NORTHWEST

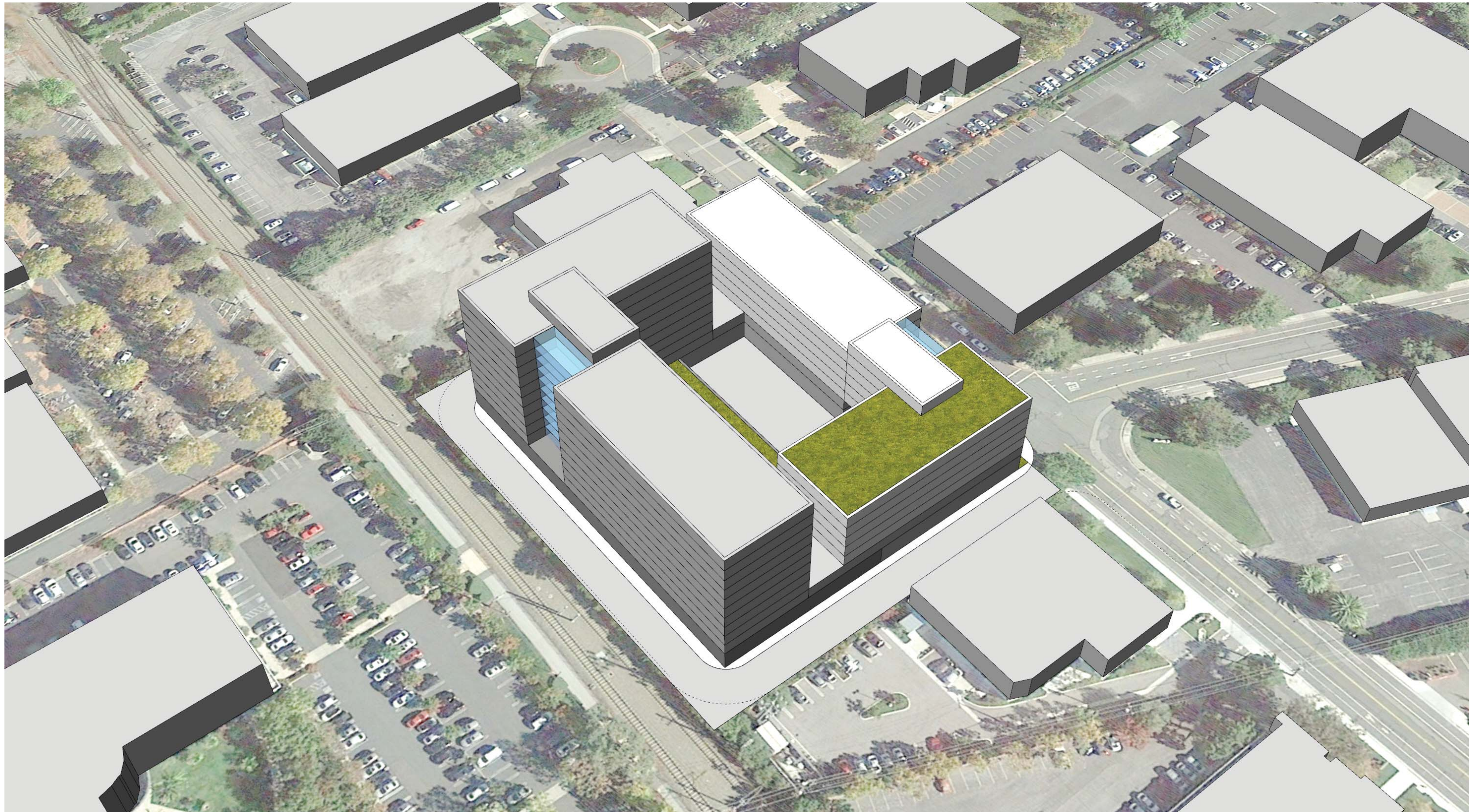


AERIAL LOOKING SOUTHWEST

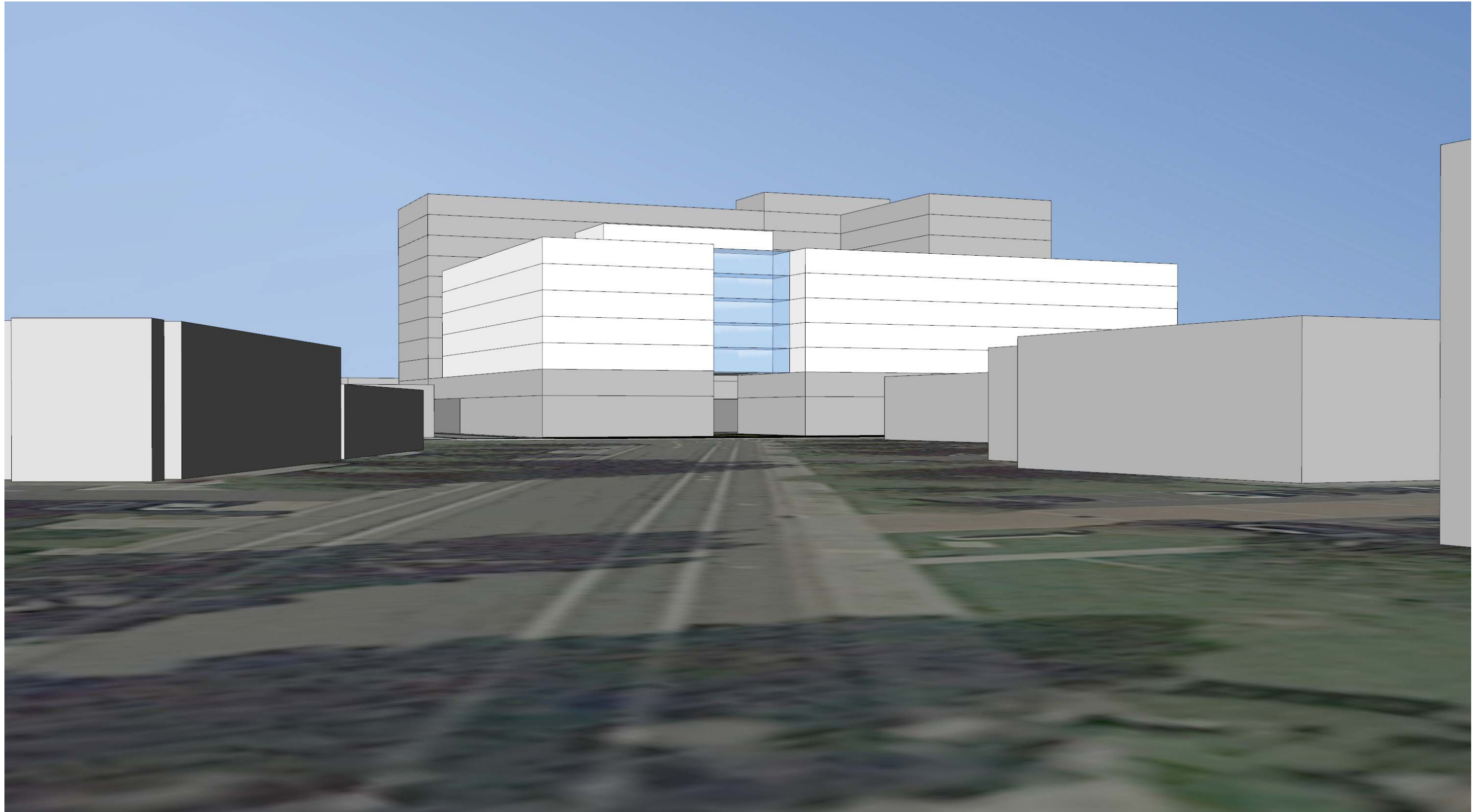


Parking Garage
~412 Stalls
1 Levels above Grade
2 Levels below

AERIAL LOOKING NORTHEAST



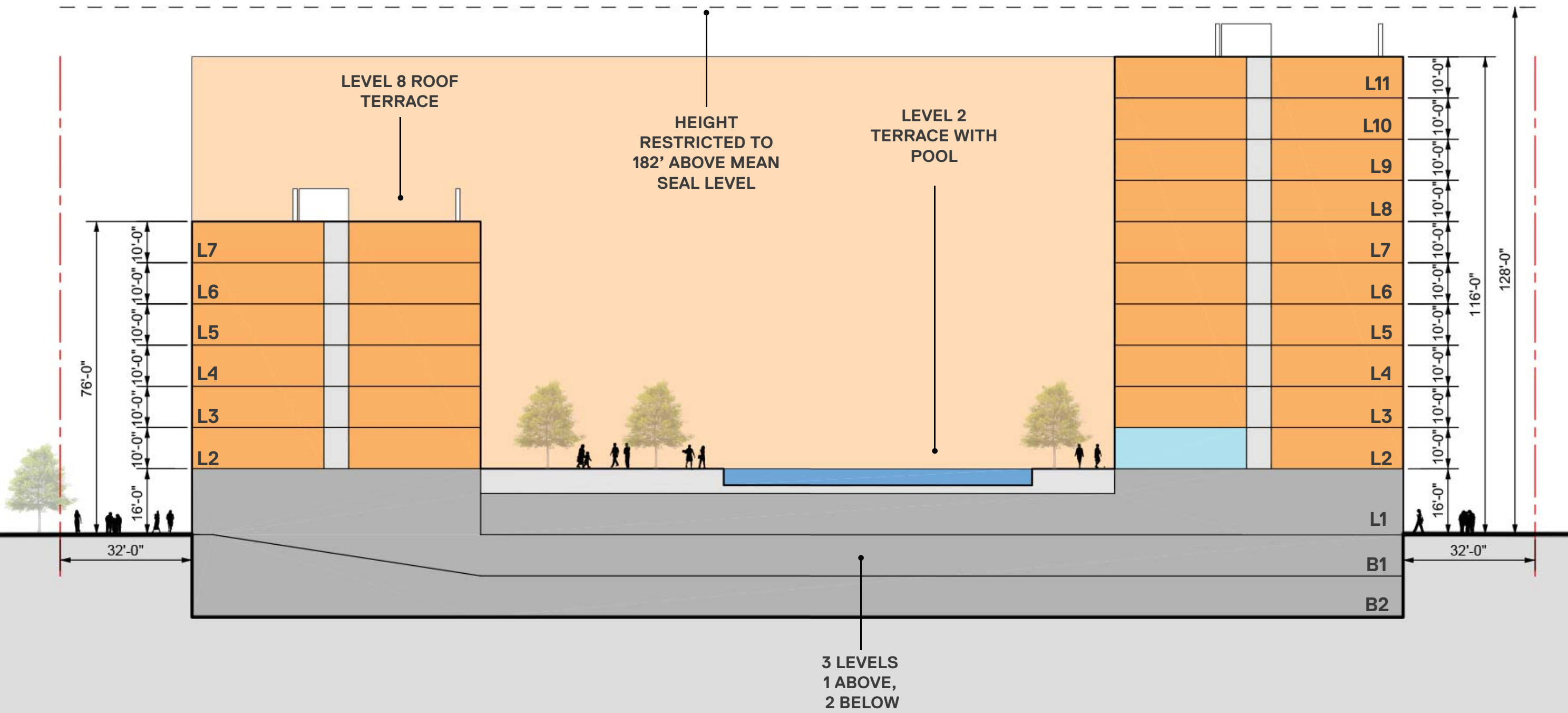
VIEW FROM MAUDE AVENUE



VIEW FROM LOGUE AVENUE



BUILDING SECTION



PROJECT DATA

Project Area	
	FAR Total
Level 11	26,700
Level 10	26,700
Level 9	26,700
Level 8	26,700
Level 7	53,400
Level 6	53,400
Level 5	53,400
Level 4	53,400
Level 3	53,400
Level 2	55,500
Level 1	30,700
B1	
Total	460,000

	Units				Total	Parking Stalls
	Studio	1Br	2Br			
Level 11	3	14	10	27		
Level 10	3	14	10	27		
Level 9	3	14	10	27		
Level 8	3	14	10	27		
Level 7	5	26	22	53		
Level 6	5	26	22	53		
Level 5	5	26	22	53		
Level 4	5	26	22	53		
Level 3	3	21	18	42		
Level 2	3	21	18	42		
Level 1	3	5	0	8	96	
B1					220	
B2					96	
Total	41	207	164	412	412	
% Total	10%	50%	40%	100%		

400 LOGUE

