

Typical soft story retrofit elements



Wood sheathing applied over existing studs, using the existing concrete foundation



New stand-alone wood shear wall with new concrete footing



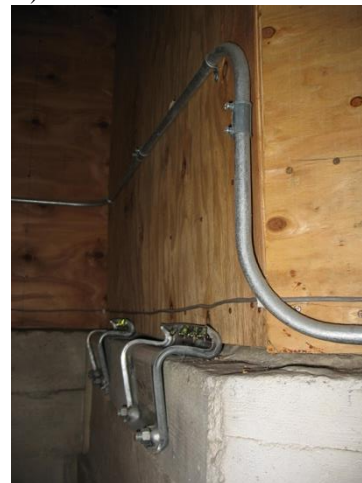
Three-bay steel moment frame installed around garage door openings, with new concrete footing (Credit: Degenkolb Engineers)



Cantilever column installed with new concrete footing (awaiting concrete) (Credit: Thor Matteson)



Local strengthening of the second floor diaphragm (Credit: Anthony DeMascole)



Sill bolting. Note the conduit temporarily removed and reinstalled.