

State Route (SR) 237/Middlefield Road Interchange Improvement

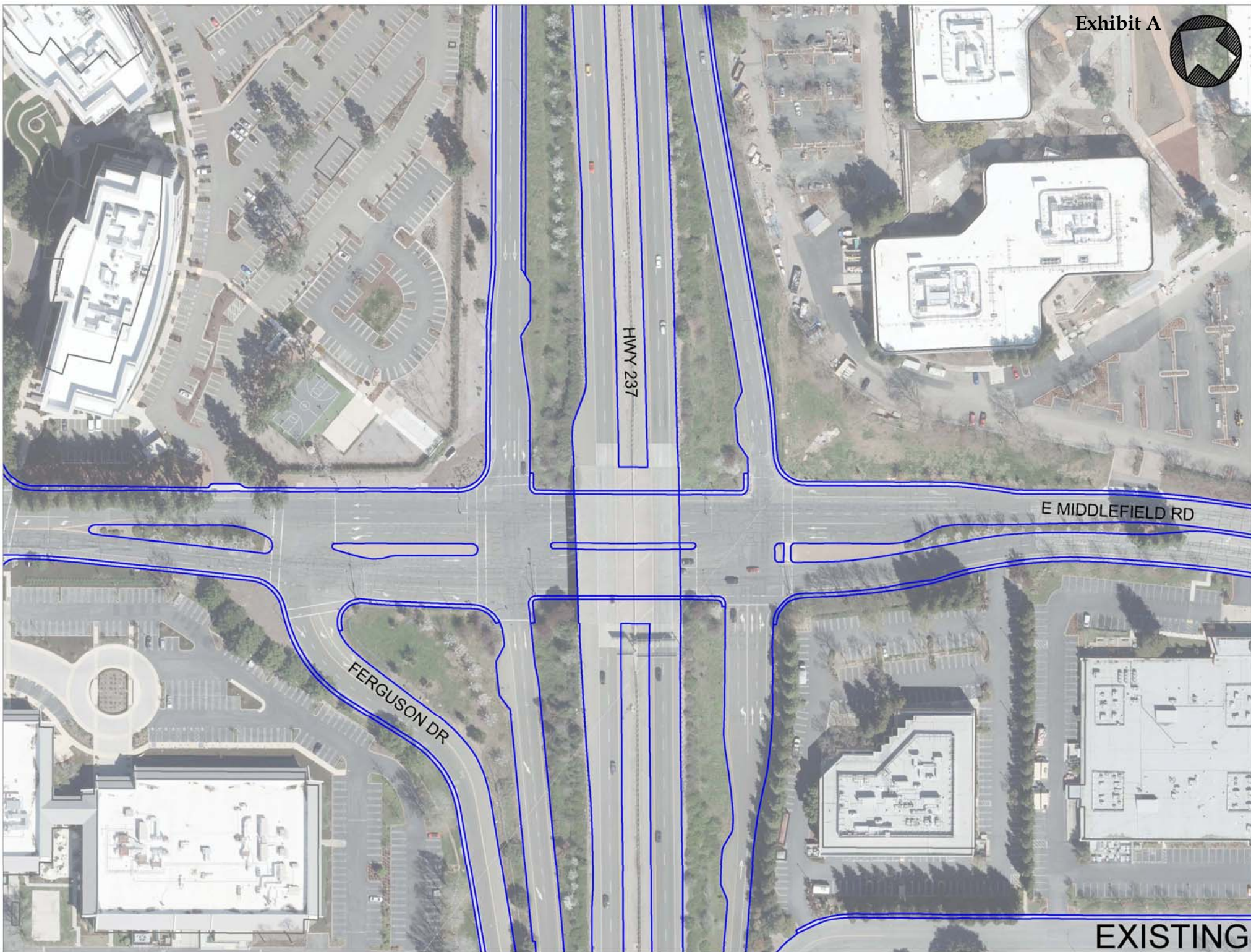
The State Route (SR) 237/Middlefield Road and SR 237/El Camino Real/SR 85 interchange improvement are priority highway projects in the Valley Transportation Plan 2040 and the 2016 Measure B Transportation Program. The SR 237/Middlefield Road interchange modifications will improve safety on Middlefield Road by eliminating one of three traffic signals, reconfiguring an intersection, and adding a new on-ramp to Route 237. The SR 85/SR 237/El Camino Real modifications will reconfigure the SR 85 on- and off-ramps at SR 237 and El Camino Real to eliminate peak-hour bottlenecks on SR 85. These improvements are also expected to reduce traffic congestion on SR 237 and nearby local arterials. The reconfiguration of the SR 85/El Camino Real ramps will provide signalized crossings of the ramps for pedestrians.

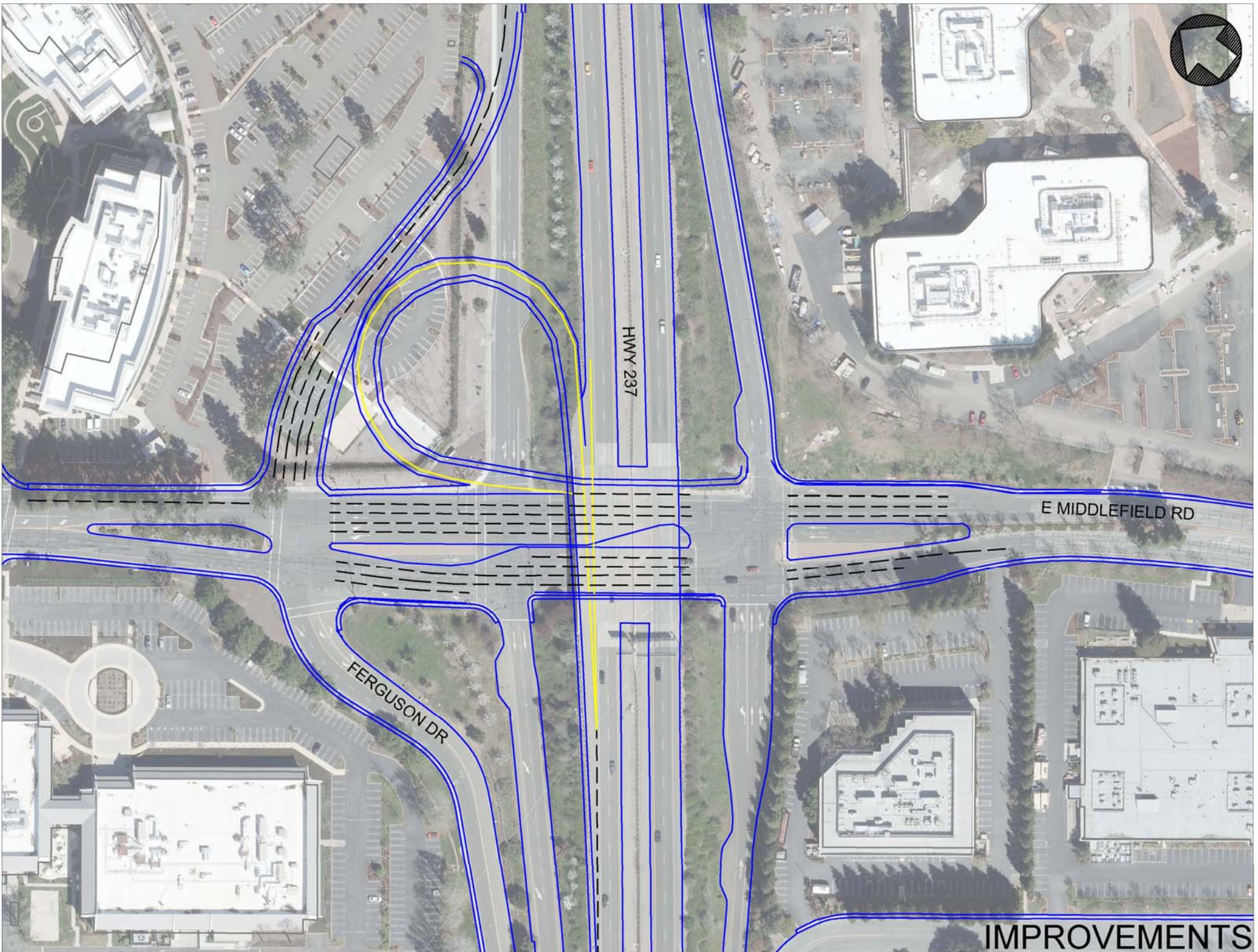
The City entered into a cooperative agreement with the Santa Clara Valley Transportation Authority (VTA) in 2006 to prepare a Project Study Report (PSR) for these interchange improvements. The PSR refines the project scope with preliminary planning-level cost estimates for future Caltrans programming and funding opportunities. The \$500,000 cost for preparing the PSR was equally shared between the City and VTA, and VTA was the lead agency for the project. The PSR was approved by Caltrans in December 2012. The next step for the interchange improvements is the development of a Caltrans Project Approval/Environmental Document (PAED), which can take two to three years, to be followed by design and construction which can take another two to three years.

The SR 237/Middlefield Road interchange is adjacent to the project site. Vehicular improvements to the intersection as shown in the PSR include the realignment of the west bound exit ramp to align with Ferguson Drive. To maintain eligibility for Measure B funding, the design must include bicycle and pedestrian improvements consistent with VTA's Complete Streets Policy. As this area is within the East Whisman Precise Plan, the City would require the design to also meet the streetscape, bike, and pedestrian improvements shown in the plan (see Attachment A).

Staff has met with VTA about beginning work on the PAED and design for the SR 237/Middlefield Road interchange improvements. The Measure B funds are not yet available, but VTA staff has indicated that the first half of the LinkedIn Community Benefit Funds could be used for the PAED and design of the SR 237/Middlefield Road interchange improvements. It is anticipated that by the time this work is completed and the project is ready for construction, Measure B funds will be available to fund the construction.

City staff will be requesting a midyear CIP to begin tracking time for this work.





HWY 237

E MIDDLEFIELD RD

FERGUSON DR

IMPROVEMENTS