

O.R. BOOK

6062

PAGE

585

2421240

BOOK 6062 PG 585

EASEMENT

(UTILITIES - GENERAL)

COASTWISE CONSTRUCTION COMPANY

does hereby grant to the CITY OF MOUNTAIN VIEW, a municipal corporation, a perpetual easement, with right of ingress and egress, for the purpose of laying, installing, maintaining, repairing, protecting and replacing Pump Stations, sanitary sewers, water mains, storm drains, gas mains, poles, overhead and underground electrical and telephone wires, electroliers, and other utility and municipal uses, together with appurtenances thereof, along, over, across, and in the lands described as follows: All that certain real property situate in the City of Mountain View, County of Santa Clara, State of California, described as follows:

BEGINNING at the most southeasterly corner of that certain 18.00 acre tract of land conveyed by Coastwise Construction Company, a limited partnership, to Herbert Kertz, et ux, by instrument dated April 22, 1954, and recorded April 27, 1954, in Book 2862 of Official Records at page 109, Santa Clara County Recorder's Office, and running along a southerly extension of the easterly line of said 18.00 acre parcel and being the easterly line of that certain 101 acre tract of land described in deed from Greenberg to Coastwise Construction Company by instrument dated May 23, 1952, recorded October 6, 1952, in Book 2499, Official Records at page 644, Santa Clara County Recorder's Office, South 6° 00' West 890.53 feet; thence at right angles North 84° 00' West 37.00 feet to the TRUE POINT OF BEGINNING.

THENCE FROM said true point of beginning North 24° 00' West 26.00 feet; thence North 6° 00' East 88.50 feet; thence North 28° 00' West 22 feet more or less to a point 15.00 feet measured at right angles from the southerly line of a 15 foot gas easement granted to Pacific Gas and Electric Company by instrument dated April 25, 1926, and recorded May 6, 1929, in Book 455 of Official Records at page 592, Santa Clara County Recorder's Office; thence South 73° 00' East parallel to and 15.00 feet from said southerly easement line 26 feet more or less to a point 37.00 feet measured at right angles from the easterly line of the aforementioned 101 acre tract; thence South 6° 00' West, parallel to and 37.00 feet from said last mentioned easterly line, 126 feet more or less to the true point of beginning.

2421240 BOOK 6062 PG 585

FILED FOR RECORD AT THE OFFICE OF

City of Mountain View

JUN 15 3 38 PM 1963

CITY CLERK OFFICE SANTA CLARA COUNTY SAN JOSE, CALIF. REC'D

RK

DH

1000

O.R. BOCK

6062



BOCK 6062 PG 586

All the rights, or any of them, granted by this Instrument to said City of Mountain View may, at the option of said City, be assigned without warranty, express or implied, to any person, firm or corporation authorized by law to operate or maintain a public utility, or utility structures and facilities, on such terms and conditions as may be designated by said City.

Dated this 27th day of November, 1962.

COASTWISE CONSTRUCTION COMPANY

*Evan Hank Buckirk*  
*[Signature]*

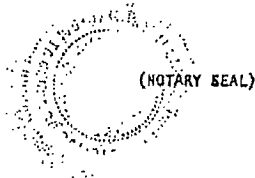
STATE OF CALIFORNIA }  
County of Santa Clara } ss.

On this 27th day of November, 1962, before me, the undersigned, a Notary Public in and for the County of Santa Clara, State of California, residing therein, duly commissioned and sworn, personally appeared

F. W. VAN BUSKIRK and T. H. PRICE, Jr.

two of known to me to be the partners of the partnership that executed the within Instrument, and acknowledged to me that such partnership executed the same.

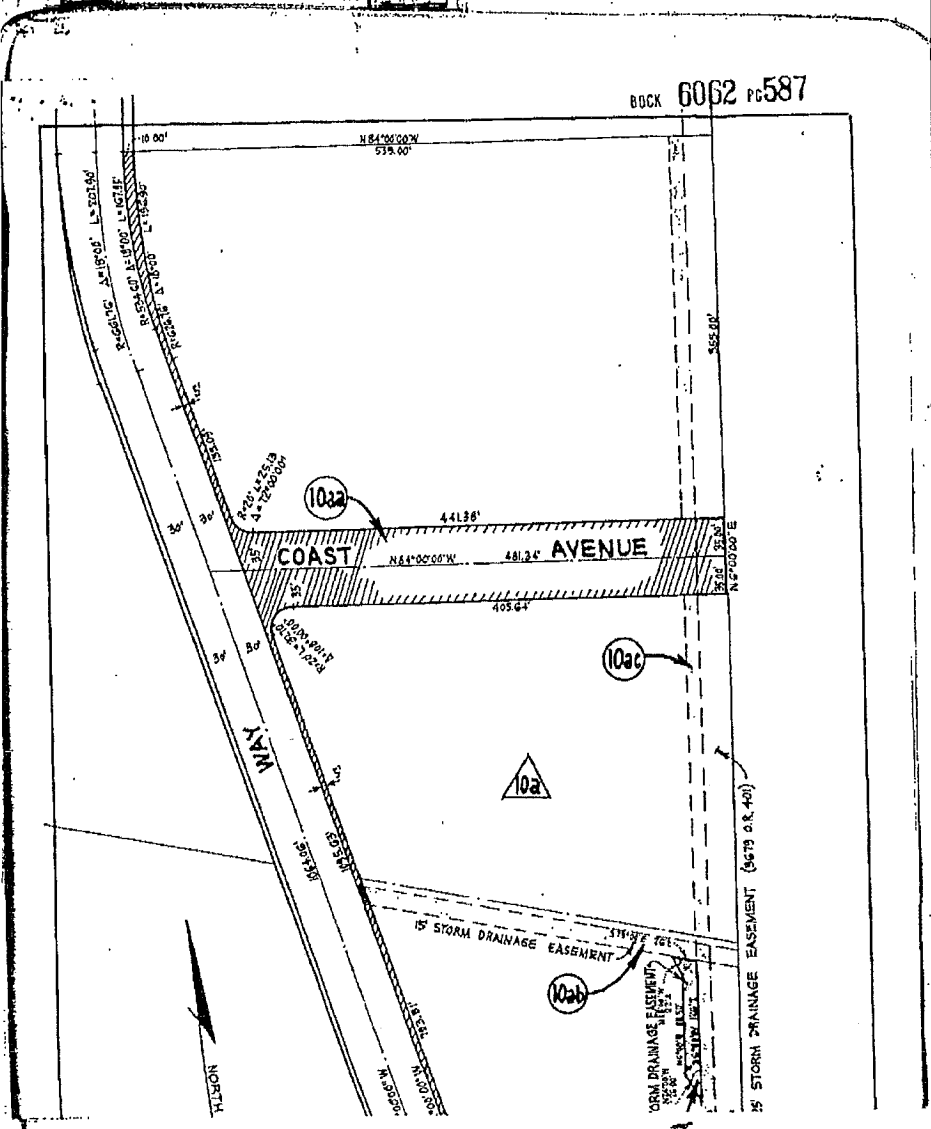
IN WITNESS WHEREOF, I have hereunto set my hand and affixed my official seal the day and year in this certificate first above written.



M. R. MacMillan  
*[Signature]*  
Notary Public in and for the County of Santa Clara, State of California.

My commission expires: 7-30-65

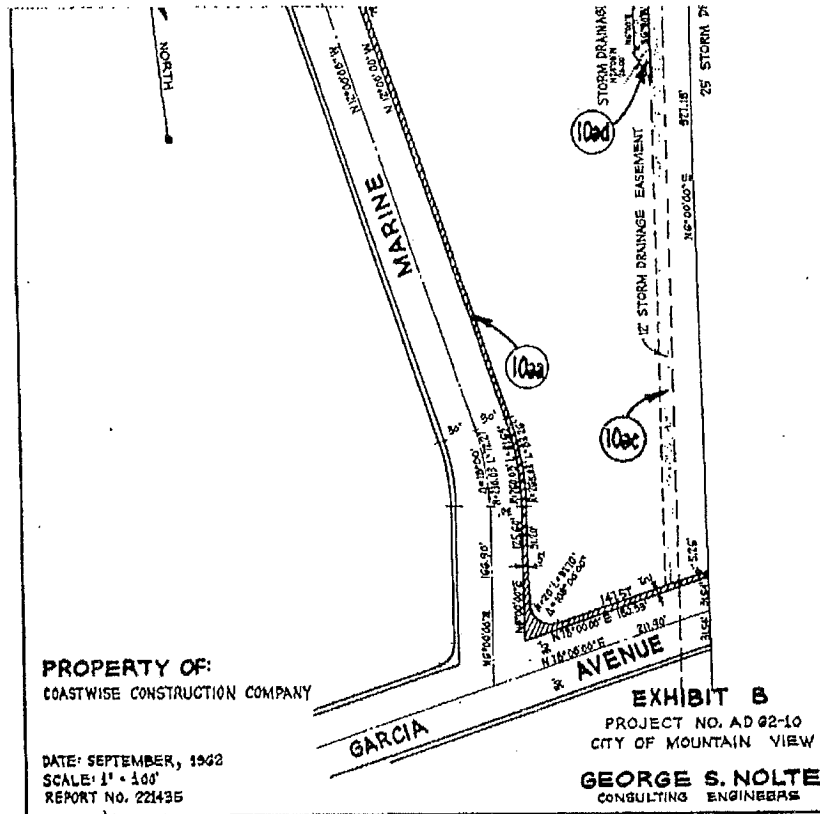
BOOK 6062 PG 587



PLAN BOOK

6062

PLAN BOOK



BOOK 6062 pg. 588

542-02

CERTIFICATE OF ACCEPTANCE

THIS IS TO CERTIFY that the interest in the real property conveyed by the Easement dated the 27th day of November, 1952, from Coastwise Construction Company, to the CITY OF MOUNTAIN VIEW, a municipal corporation, IS HEREBY ACCEPTED BY order of the City Council of the City of Mountain View in accordance with the provisions of RESOLUTION NO. 2035, authorizing the City Manager of the City of Mountain View to accept and consent to deeds or grants or easements, which Resolution was adopted on the 23rd day of December, 1957, and recorded with the County Recorder on the 21st day of January, 1958, in Volume 3987, page 245 of Official Records; and the Grantee consents to recordation thereof by its duly authorized officer, the City Clerk of the City of Mountain View.

Dated this 13th day of June, 1953.

CITY OF MOUNTAIN VIEW  
a Municipal Corporation

By John E. O'Halloran  
CITY MANAGER

