



DATE: April 3, 2018

CATEGORY: Consent

DEPT.: Public Works

TITLE: **Citywide Trash Capture Phase I,
Project 16-53 – Various Actions**

RECOMMENDATION

1. Appropriate and transfer \$250,000 from the Storm Drain Construction Fund to Citywide Trash Capture Device, Phase I, Project 16-53. (Five votes required)
2. Authorize the City Manager to execute an amendment to the agreement with JMB Construction, Inc. for an additional construction contingency of \$210,000 for a total contract amount of \$1,587,020 in the Citywide Trash Capture Device, Phase I, Project 16-53.
3. Authorize the City Manager to execute a cost-sharing agreement with the Santa Clara Valley Water District (SCVWD) for installation of trash boom anchors at Permanente Creek.

BACKGROUND

The San Francisco Regional Water Quality Control Board (RWQCB) Municipal Regional Stormwater National Pollutant Discharge Elimination System (NPDES) Permit requires the City and other permittees to reduce trash load from stormwater systems by 70 percent by 2017 and 100 percent by 2022.

The City has implemented a number of trash management actions to help achieve required trash load reductions, including:

- Installation of a large trash capture device at Leland Avenue.
- Recent installation of a large trash capture device on Park Drive adjacent to McKelvey Park.

- Installation of small inlet-based devices in two downtown parking lots and an inlet downstream of the Recology Recycling Center on Terra Bella Avenue and San Leandro Avenue.
- Passing an ordinance banning single-use carry-out plastic bags.
- Passing an ordinance banning polystyrene foam food service ware.
- Hosting multiple creek/channel/shoreline cleanups annually.
- Increased inspections of industrial/commercial facilities, and other management actions.

Trash Capture Device

Citywide Trash Capture, Phase I, Project 16-53, includes a large, new trash capture device in the office park just west of Shoreline Sailing Lake (see Figure 1). The property is leased to Intuit, and staff has been coordinating the project impacts with both the property owner and Intuit.

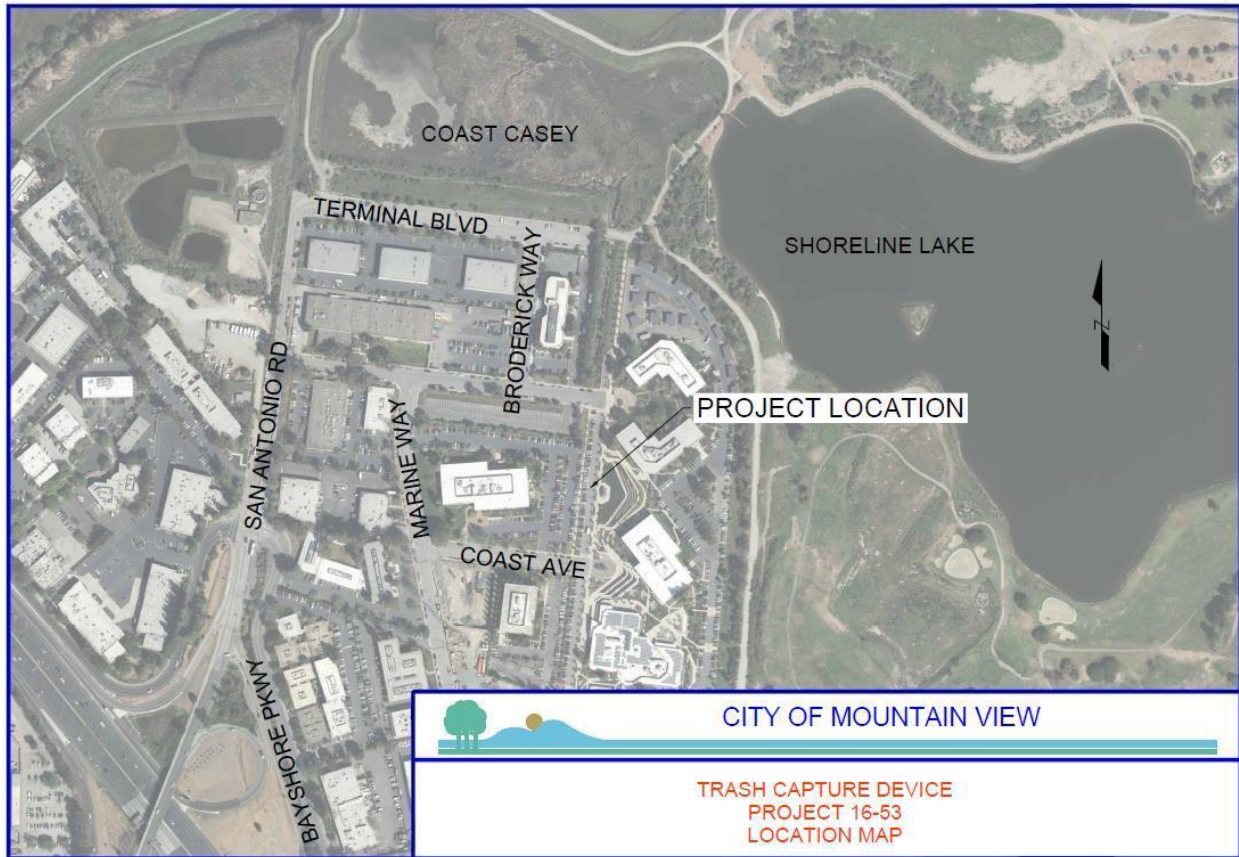


Figure 1 – Location Map

Installing this trash capture device will treat approximately 940 acres and result in an approximately 17 percent reduction in Citywide trash load.

On June 27, 2017, the City Council authorized staff to advertise for bids and for the City Manager to execute a contract with the lowest responsive bidder. Two bids were received for the project, and the project was awarded in January 2018 to the low bidder, JMB Construction, Inc., for \$1,377,020, which includes a \$120,000 construction contingency.

Trash Booms

The installation of trash booms in City creeks is another method for the City to achieve trash reduction credits. Trash booms are flotation structures used to collect floating debris and trash and are relatively inexpensive compared with large underground structures. As part of the strategy for meeting trash removal regulatory requirements, staff proposes installation of two trash booms: one on Permanente Creek, immediately north of Charleston Road; and the other on Stevens Creek, upstream of the Moffett

Boulevard bridge. Together, these structures will achieve an approximately 13 percent trash reduction. Though relatively inexpensive, staff proposes limited use of trash booms as there is a possibility that the RWQCB may eliminate or cap the credit for using these devices to meet trash reduction requirements.

ANALYSIS

Trash Capture Device

The schedule for completion of the trash capture device was developed so that construction would be complete prior to Intuit's planned events on the site in summer 2018. Some underground AT&T facilities must be relocated to install the trash capture device, and staff has been working closely with AT&T to accomplish this relocation prior to the City's construction. The City is required to fund the AT&T relocation work, with the final cost subject to bids AT&T receives for the work. AT&T is behind schedule, and the relocation of their facilities may impact the City's construction schedule.

To avoid delays in the construction schedule, which would impact Intuit and result in possible delay costs in the City's contract with JMB Construction, Inc., staff recommends having the City's contractor perform some of AT&T's work. The recommended actions would add \$210,000 to the construction contingency in the City's contract with JMB for additional potholing along the new AT&T alignment, installation of new conduits and a utility box, traffic control, and other miscellaneous work. The resulting JMB Construction, Inc. contract amount would be \$1,587,020, including a \$330,000 construction contingency. By performing some of the AT&T work, the City's expense to reimburse AT&T will be reduced, but the exact amount of the reduction is not known at this time.

Staff is also requesting an additional \$40,000 in the project budget for possible overtime inspection on nights and weekends due to the tight project schedule.

Trash Booms

The Santa Clara Valley Water District (SCVWD) has a flood control construction project along Permanente Creek north of Highway 101 in Mountain View and has agreed to help the City install two anchors used to support the future trash boom on the Permanente Creek channel walls as part of their construction. The estimated cost is \$15,000, and staff considers partnering with the SCVWD a more cost-effective approach than the City designing and bidding the work. A cost-sharing agreement is needed for the City to reimburse the SCVWD for the work.

Staff is applying for permits for the remaining work associated with the trash booms, which will be bid separately by the City. The booms are anticipated to be installed by fall 2018.

FISCAL IMPACT

Citywide Trash Capture, Phase I, Project 16-53, is funded with \$2,200,000, including \$2,000,000 from the Wastewater Fund and \$200,000 from the Construction/Conveyance Tax Fund. The recommended actions would increase funding by \$250,000 from the Storm Drain Construction Fund, for a total project budget of \$2,450,000. There is a current balance of approximately \$650,000 in the Storm Drain Construction Fund, which is sufficient for the recommended appropriation. Current project funds are available for the cost-sharing agreement.

ALTERNATIVES

1. Do not add additional funding and allow AT&T to perform all of the relocation work.
2. Provide other direction.

PUBLIC NOTICING – Agenda posting and copy to the SCVWD.

Prepared by:

Lisa Au
Principal Civil Engineer/Capital Projects

Approved by:

Michael A. Fuller
Public Works Director

Audrey Seymour Ramberg
Assistant City Manager

LA/TS/2/CAM
911-04-03-18CR-E

cc: PWD, APWD – Solomon, APWD – Hosfeldt, USM, PCE – Au, PCE – Macaraeg, SCE – Sukhwani, AE – Gabon, AAI – Goedicke, AAI – Doan, FASD, AFASD, F/c (16-53)