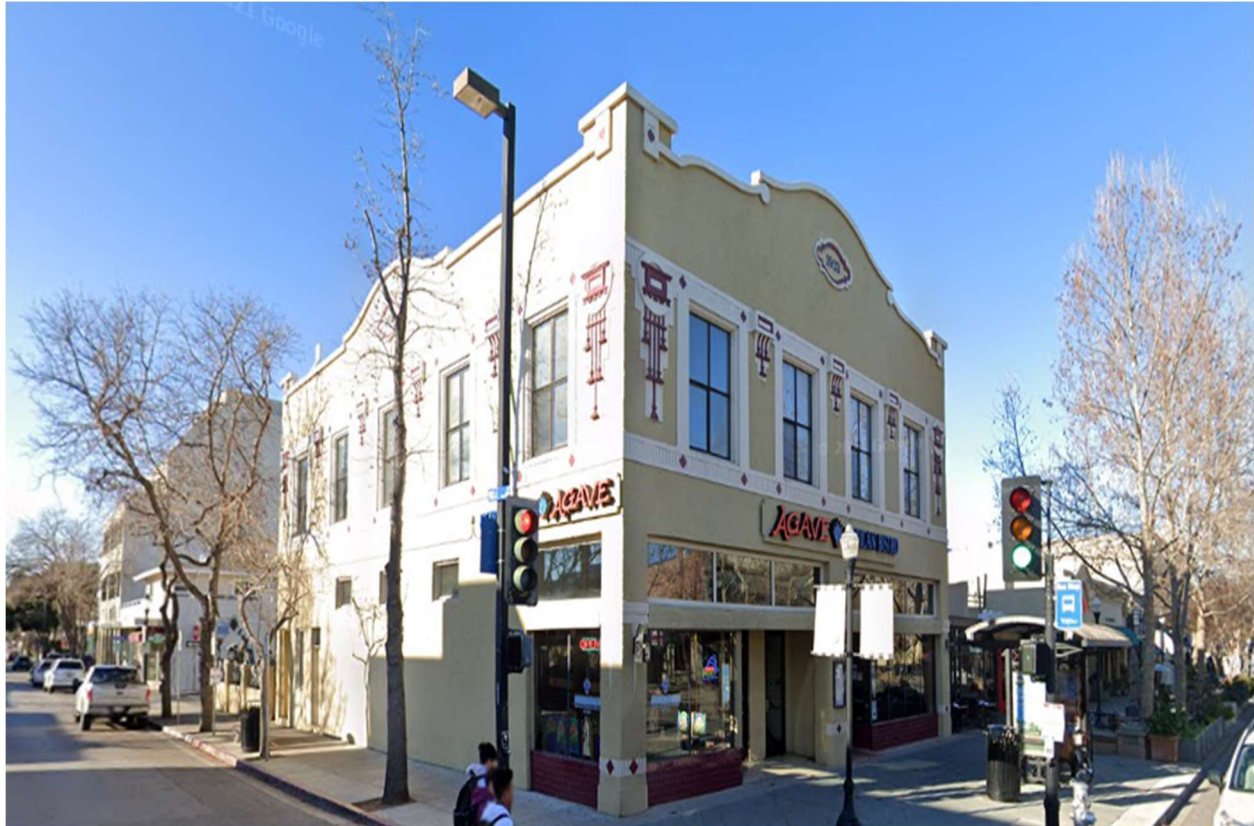




Arborist Report (revised 8/31/23)  
Tree identification and recommendations for  
194-198 Castro Street (APN: 158-15-013)  
construction project



Scott Moncrieff  
ISA Certified Arborist  
Tree Division Manager  
Alpine Tree Care  
8787 Monterey Road  
Gilroy CA 95020  
669-888-4655



Table of contents:

|                                      |   |
|--------------------------------------|---|
| Street Tree Identification .....     | 3 |
| Tree size.....                       | 3 |
| Tree Condition.....                  | 3 |
| Anticipated Construction Impact..... | 3 |
| Pre-Construction Maintenance.....    | 4 |
| Tree Protection Guidelines.....      | 5 |
| Post Construction Maintenance.....   | 6 |
| Heritage Tree Report.....            | 6 |
| Additional Information.....          | 6 |

## Street Tree Identification



- Tree 1 – London plane (*Platanus acerifolia*), 18” DBH, condition good,  
Anticipated construction impact – none.
- Tree 2 – Tulip Poplar (*Liriodendron tulipifera*), 13” DBH, condition fair,  
Anticipated construction impact – low (canopy, stem).
- Tree 3 – Chinese Pistache (*Pistacia chinensis*), 8” DBH, condition fair,  
Anticipated construction impact – low (canopy, stem).
- Tree 4 – Chinese Pistache (*Pistacia chinensis*), 12” DBH, condition fair,  
Anticipated construction impact – moderate (canopy, stem,  
roots).
- Tree 5 - Chinese Pistache (*Pistacia chinensis*), 10” DBH, condition poor,  
Anticipated construction impact – moderate (canopy, stem  
roots).

- Flowering Plum (to be removed), 5” DBH, Condition good.

Pre-construction Maintenance (City)- Pruning for adequate building clearance, post construction building clearance and canopy balance. Due to its poor condition, Tree #5 should be removed before construction. After construction, a new 24" box tree of the same species should be planted in the same general location.

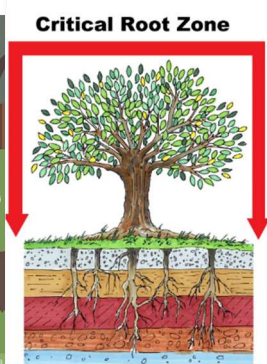
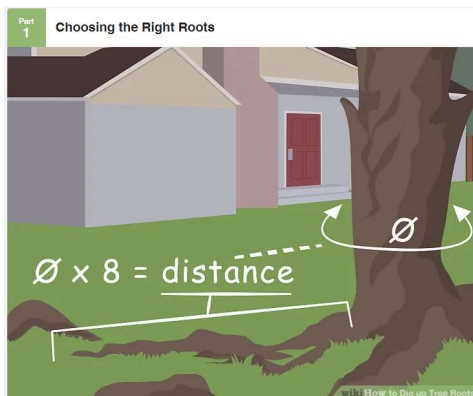


## Tree Protection Guidelines –

Protective fencing for the street trees in 3x3 tree wells is most likely not feasible. Where demolition must occur close to trees, such as removing curb and pavement, install temporary trunk protection devices such as winding silt sock wattle or wood planks around trunks (see photos below). Any low branches that are within the work zone should also be protected. Remove trunk protection after demolition is completed and install a protective fence at the limits of the tree protection zone. Do not retain wattling around tree trunks for more than 2-3 weeks to avoid damaging trunks from excess moisture.



Minimum root disruption during construction (Contractor) – Only cut which roots are necessary to complete construction.



(ideal if possible)



Post Maintenance – Inspect trees once a year for health and public safety issues. Irrigation should be set up for the trees. Pruning every year or every other year is recommended for safety and structure.

Heritage Trees Report – No Heritage trees to be removed.

Additional information – 2 inner property Flowering Plum trees to be removed. No adequate area on site to plant new trees after construction completion. In-lieu fees will need to be paid to the city.

Scott Moncrieff WE-10627A  
669-888-4655  
Alpine Landscapes  
8787 Monterey Road  
Gilroy Ca 95020