



Arborist Letter

Prepared for:

Joseph Rehrmann

Stomper Company
3135 Diablo Ave., Hayward, CA
94545

Tree Location:

1288 Pear Ave
Mountain View, CA 94043

Prepared by:

Christa Perez
ISA Certified Arborist WE-12147A
ArborMD Tree Care, Inc.

Christa Perez
ISA Certification
WE-12147A 8/14/2024



Introduction:

ArborMD tree care was asked to perform a tree inspection of 11 Coast Redwoods (*Sequoia sempervirens*) lining the East perimeter of 1288 Pear Ave in Mountain View on behalf of Joseph Rehrmann with Stomper Company.

The inspection was performed on Friday, August 9th, 2024.

Intent of Report:

This report is designed to record ground inspection details of each Redwood and the impacts of nearby construction. Data to be collected: Tree #, Diameter at 54" above ground, picture of entire tree, pictures of trunk/base noting visible root impact, health rating and recommendations for tree removal or remain and monitor.

Health rating for each tree is determined by canopy size, density, and condition.

Methods and Data:

Methods employed in collecting data are as follows:

- Perform site visit and create location map with points for each tree along with corresponding photos taken during visit
- Measure Diameter at Breast Height (DBH) approximately 54" inches above grade
- Estimate size of tree based on ground level view
- Observe health and structure at time of visit and assign rating of each tree into one of the following five categories listed below:
 - Excellent - Very good health and vigor in surveyed species with expected ascendancy in tree structure and growth.

- Good - Minor deficiencies seen in surveyed species, none severe enough to be seen as untreatable through traditional mitigation measures.
 - Moderate - Higher levels of deficiencies including possible hazards, requiring mitigation efforts.
 - Fair - significant deficiencies noted in overall health and structure of tree, significant action may need to be taken.
 - Poor - Observation of clearly poor or compromised structure, significant action required.
- Using data collected on site, prepare letter with recommendations:

Figure 1:

ID	Common	Botanical	Height	DBH	Health (Fair, Poor, Critical, Dead)	Roots intact?	Protected Tree	Recommended Removals
1	Redwood	<i>Sequoia sempervirens</i>	20'	10.5"	60% Fair	No	Yes	Yes
2	Redwood	<i>Sequoia sempervirens</i>	20'	14"	70% Moderate	Partially	Yes	Yes
3	Redwood	<i>Sequoia sempervirens</i>	20'	14.5"	70% Moderate	Partially	Yes	Yes
4	Redwood	<i>Sequoia sempervirens</i>	20'	12.5"	60% Fair	No	Yes	Yes
5	Redwood	<i>Sequoia sempervirens</i>	20'	16.5"	60% Fair	No	Yes	Yes
6	Redwood	<i>Sequoia sempervirens</i>	10'	4"	70% Moderate	Yes	Yes	Yes

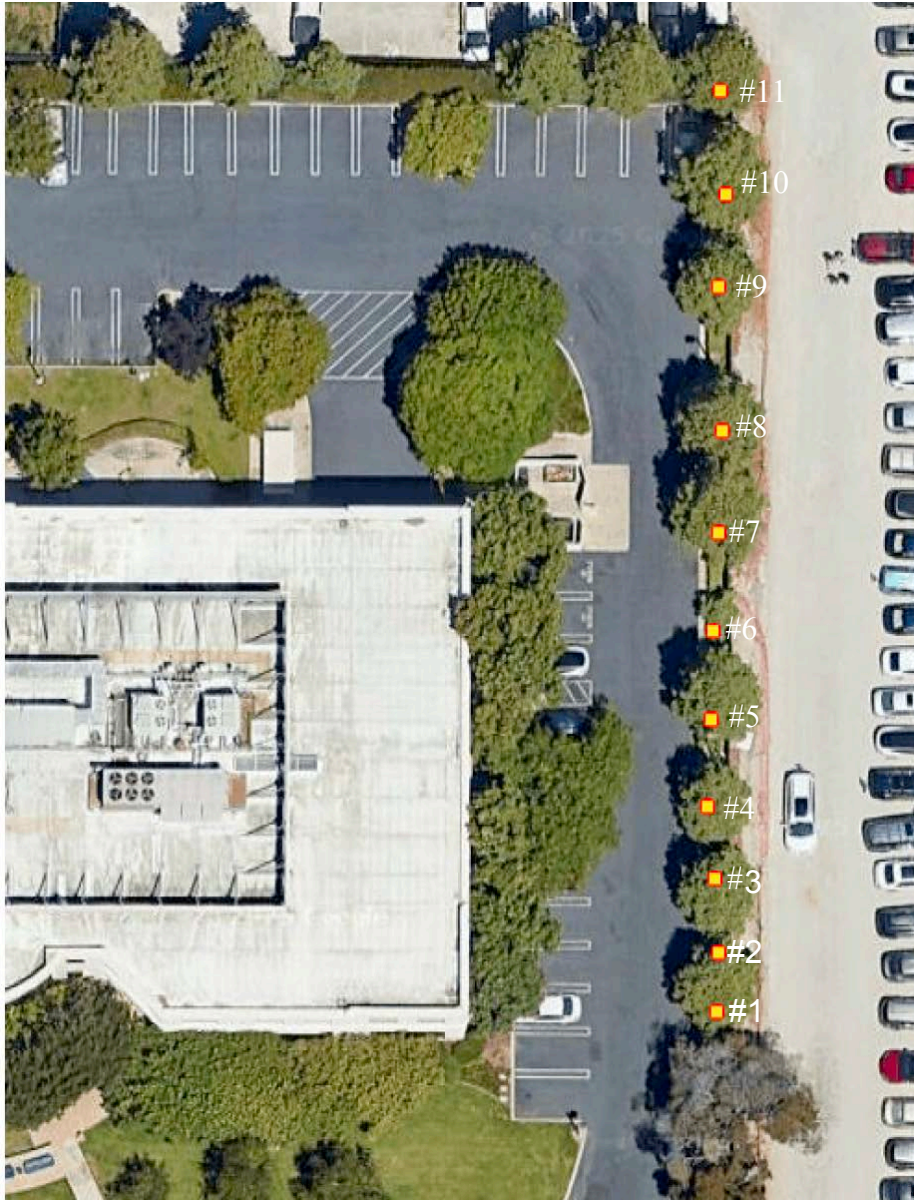


Arbor MD
Tree Care, Inc.

[illegible]

Christa Perez
ISA Certification WE-12147A
8/14/2024

Below is an image of the site map with removal recommendations outlined in Red.



Christa Perez
ISA Certification WE-12147A
8/14/20224
Discussion:

In performing the site inspection of these 11 Redwoods, it was determined that there has been significant impact due to nearby construction. Directly against the row of observed Redwoods is an equipment/vehicle path.



I can see no evidence of tree protection installed prior to construction. Noticeable recent root rips and tears were observed on each tree. Some were impacted more than others. Of the 11 Redwoods, it was determined that all 11 should be removed and replaced with a more suitable species, such as an Emerald Sunshine Elm.

Below are pictures and locations of each tree noting root barriers (or lack thereof) along with pics of exposed rooting area:



August 9, 2024

Sequoia sempervirens ID# 1
Coast Redwood

DBH: 10.5"



August 11, 2024

Sequoia sempervirens ID# 1
Coast Redwood

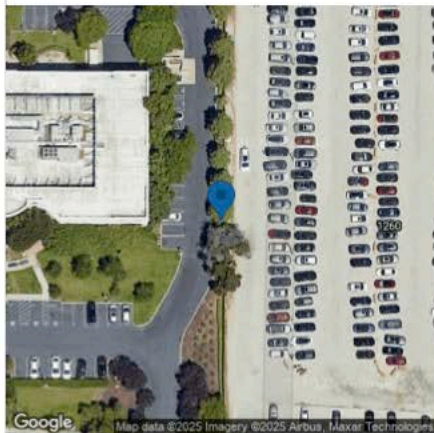
DBH: 10.5"



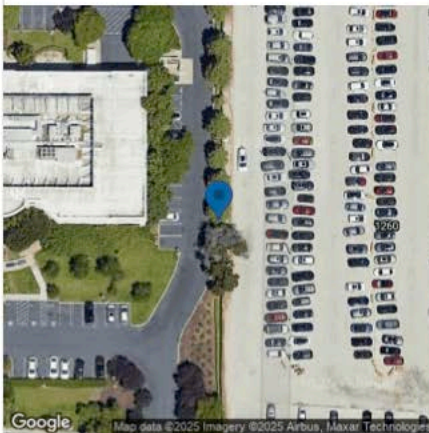
August 13, 2024

Sequoia sempervirens ID# 1
Coast Redwood

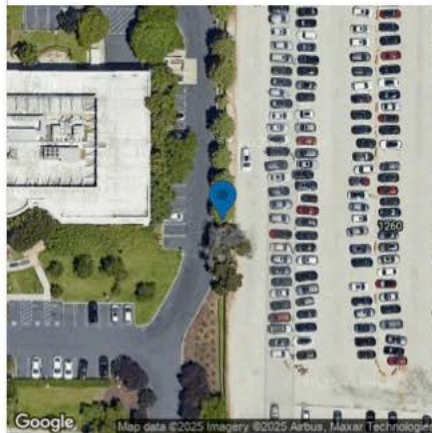
DBH: 10.5"



Remove, grind stump, and replace
with 15 gallon Emerald Sunshine Elm
No barrier, plywood in front



Remove, grind stump, and replace
with 15 gallon Emerald Sunshine Elm
No barrier, plywood in front



Remove, grind stump, and replace
with 15 gallon Emerald Sunshine Elm
No barrier, plywood in front



August 13, 2024

Sequoia sempervirens ID# 1

Coast Redwood

DBH: 10.5"



August 9, 2024

Sequoia sempervirens ID# 2

Coast Redwood

DBH: 14"

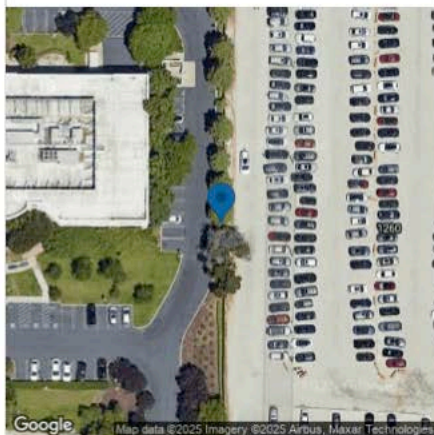


August 11, 2024

Sequoia sempervirens ID# 2

Coast Redwood

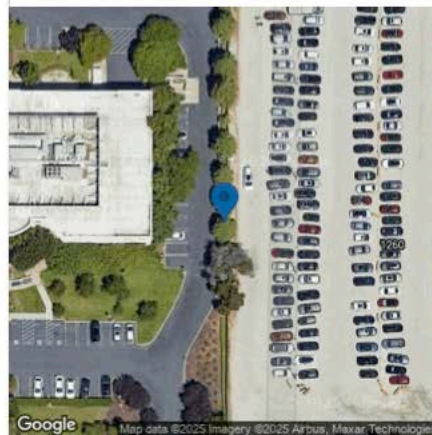
DBH: 14"



Remove, grind stump, and replace
with 15 gallon Emerald Sunshine Elm
No barrier, plywood in front



Remove, grind stump, and replace
with 15 gallon Emerald Sunshine Elm
Torn barrier plywood in front. Barrier
mostly in tact



Remove, grind stump, and replace
with 15 gallon Emerald Sunshine Elm
Torn barrier plywood in front. Barrier
mostly in tact



August 13, 2024

Sequoia sempervirens ID# 2
Coast Redwood

DBH: 14"



August 13, 2024

Sequoia sempervirens ID# 2
Coast Redwood

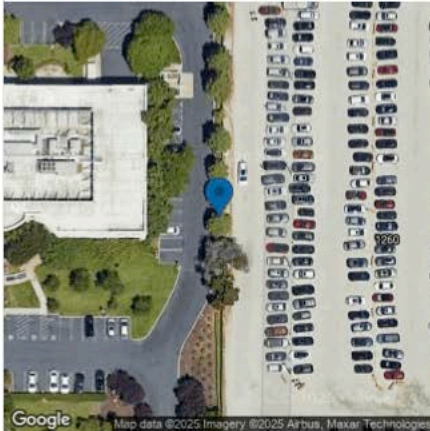
DBH: 14"



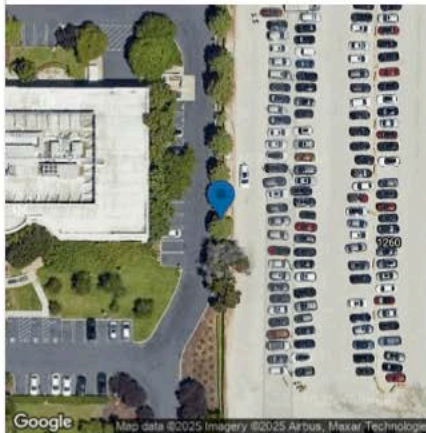
August 9, 2024

Sequoia sempervirens ID# 3
Coast Redwood

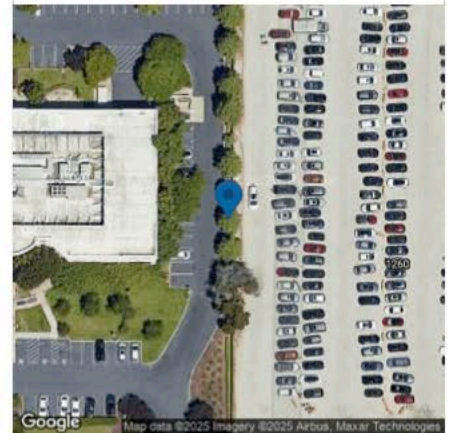
DBH: 14.5"



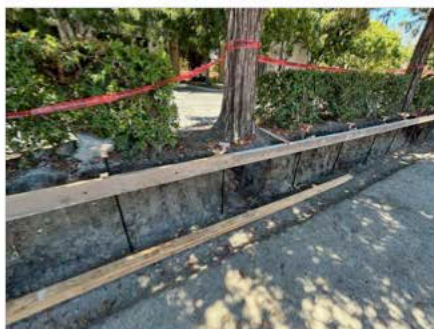
Remove, grind stump, and replace
with 15 gallon Emerald Sunshine Elm
Torn barrier plywood in front. Barrier
mostly in tact



Remove, grind stump, and replace
with 15 gallon Emerald Sunshine Elm
Torn barrier plywood in front. Barrier
mostly in tact



Remove, grind stump, and replace
with 15 gallon Emerald Sunshine Elm
Barrier w exposed roots

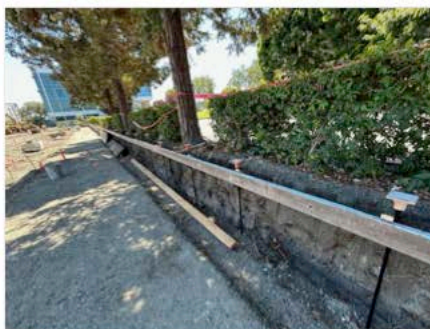


August 13, 2024

Sequoia sempervirens ID# 3

Coast Redwood

DBH: 14.5"

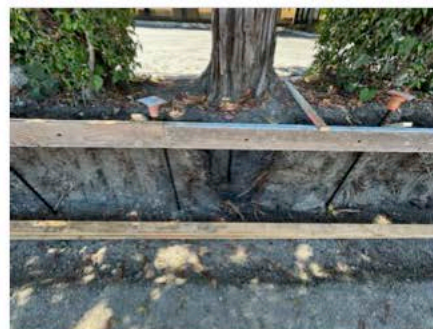


August 13, 2024

Sequoia sempervirens ID# 3

Coast Redwood

DBH: 14.5"

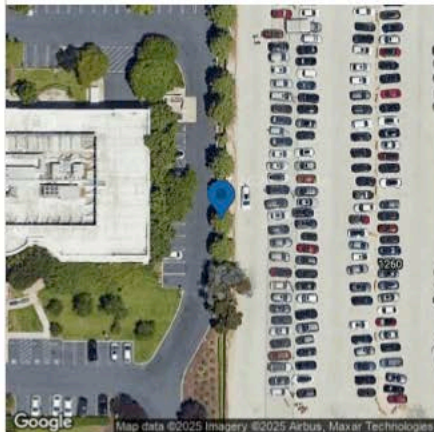


August 13, 2024

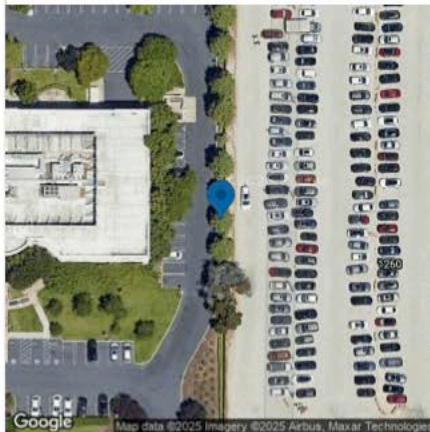
Sequoia sempervirens ID# 3

Coast Redwood

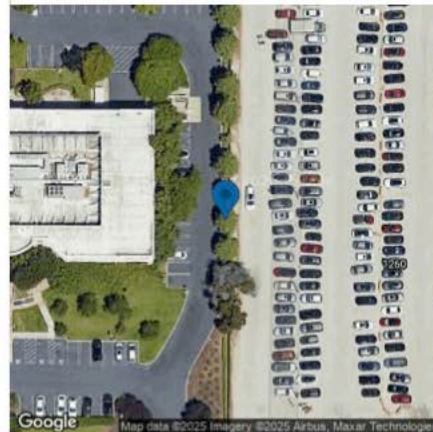
DBH: 14.5"



Remove, grind stump, and replace
with 15 gallon Emerald Sunshine Elm
Barrier w exposed roots



Remove, grind stump, and replace
with 15 gallon Emerald Sunshine Elm
Barrier w exposed roots



Remove, grind stump, and replace
with 15 gallon Emerald Sunshine Elm
Barrier w exposed roots



August 9, 2024

Sequoia sempervirens ID# 4
Coast Redwood

DBH: 12.5"



August 11, 2024

Sequoia sempervirens ID# 4
Coast Redwood

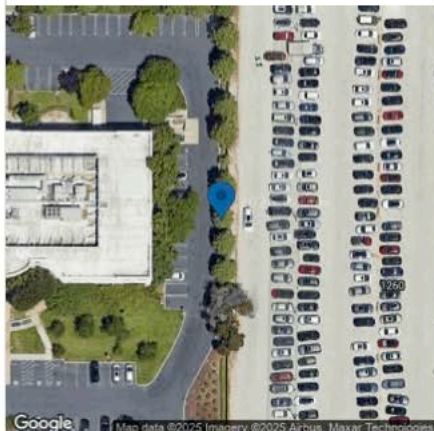
DBH: 12.5"



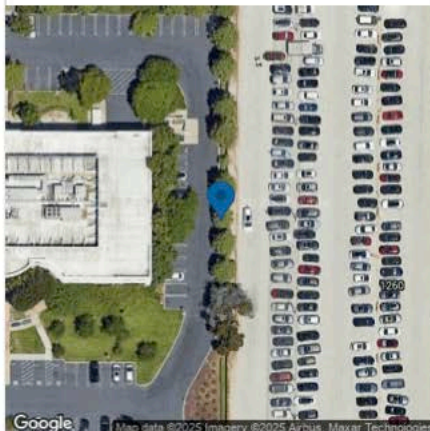
August 13, 2024

Sequoia sempervirens ID# 4
Coast Redwood

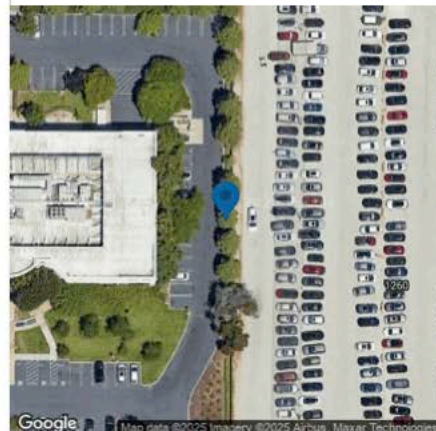
DBH: 12.5"



Remove, grind stump, and replace
with 15 gallon Emerald Sunshine Elm
Torn barrier w exposed roots



Remove, grind stump, and replace
with 15 gallon Emerald Sunshine Elm
Torn barrier w exposed roots



Remove, grind stump, and replace
with 15 gallon Emerald Sunshine Elm
Torn barrier w exposed roots



August 9, 2024

Sequoia sempervirens ID# 5
Coast Redwood

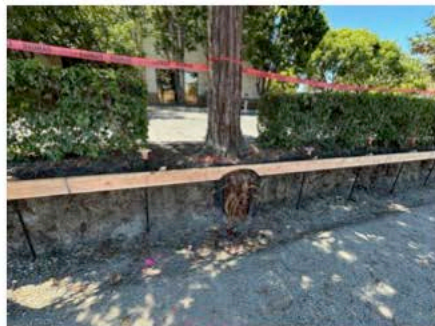
DBH: 16.5"



August 11, 2024

Sequoia sempervirens ID# 5
Coast Redwood

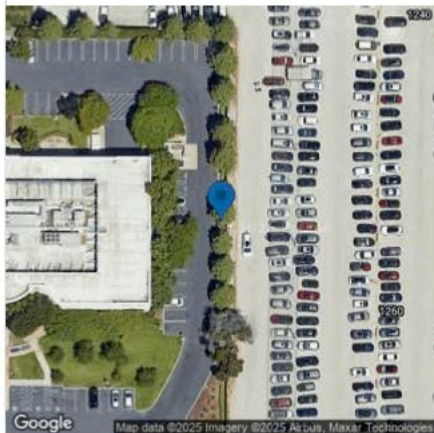
DBH: 16.5"



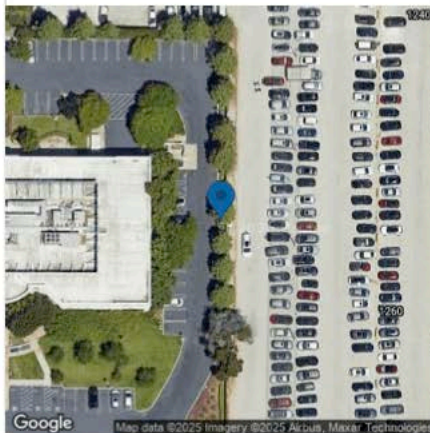
August 13, 2024

Sequoia sempervirens ID# 5
Coast Redwood

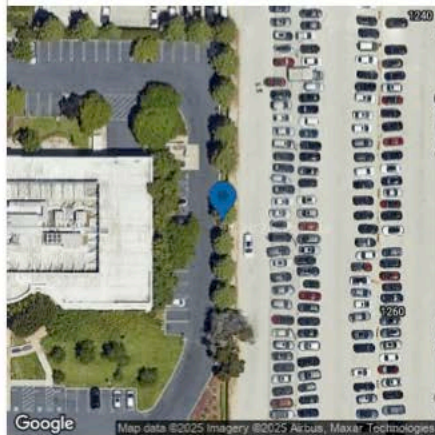
DBH: 16.5"



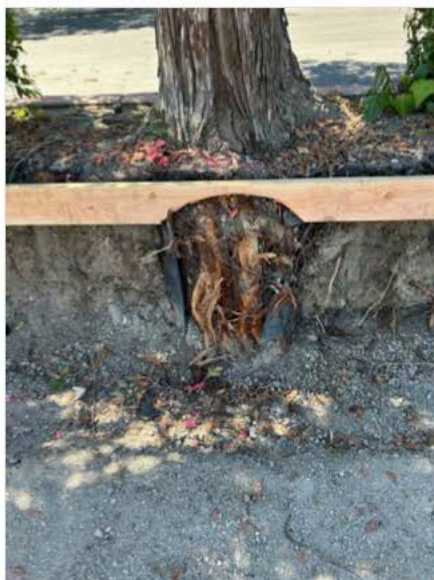
Remove, grind stump, and replace
with 15 gallon Emerald Sunshine Elm
Barrier mostly gone



Remove, grind stump, and replace
with 15 gallon Emerald Sunshine Elm
Barrier mostly gone



Remove, grind stump, and replace
with 15 gallon Emerald Sunshine Elm
Barrier mostly gone



August 13, 2024

Sequoia sempervirens ID# 5
Coast Redwood

DBH: 16.5"



August 9, 2024

Sequoia sempervirens ID# 6
Coast Redwood

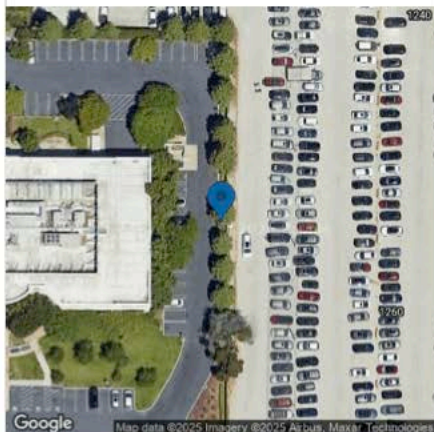
DBH: 4"



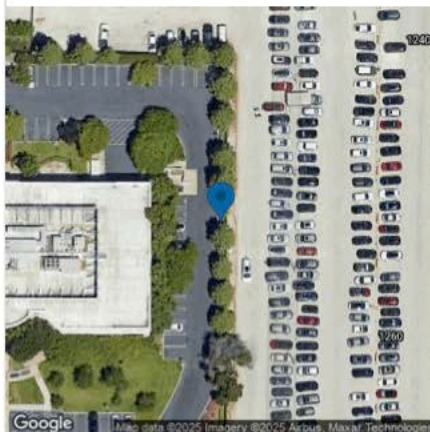
August 11, 2024

Sequoia sempervirens ID# 6
Coast Redwood

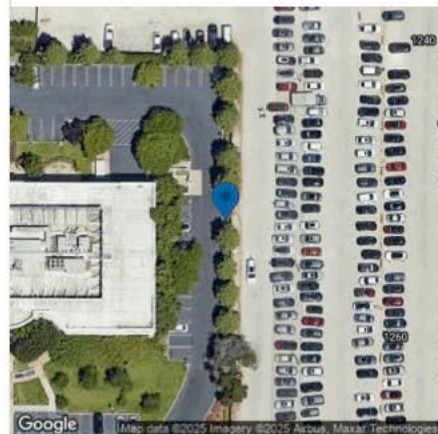
DBH: 4"



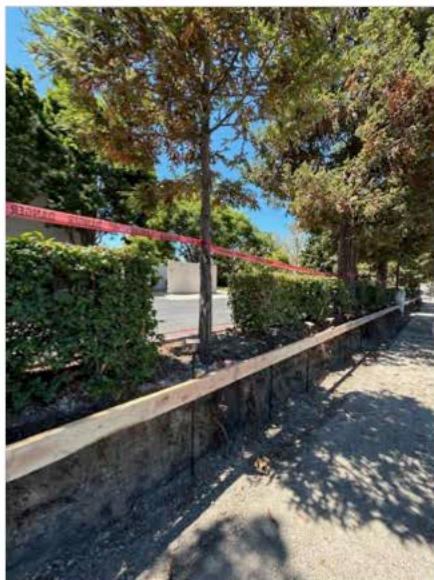
Remove, grind stump, and replace
with 15 gallon Emerald Sunshine Elm
Barrier mostly gone



Remove, grind stump, and replace
with 15 gallon Emerald Sunshine Elm
Baby Redwood, barrier in tact



Remove, grind stump, and replace
with 15 gallon Emerald Sunshine Elm
Baby Redwood, barrier in tact



August 13, 2024

Sequoia sempervirens ID# 6
Coast Redwood

DBH: 4"



August 9, 2024

Sequoia sempervirens ID# 7
Coast Redwood

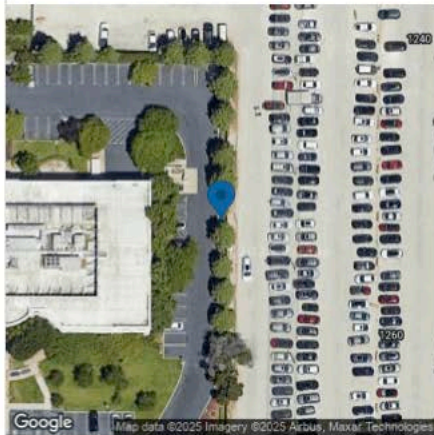
DBH: 18"



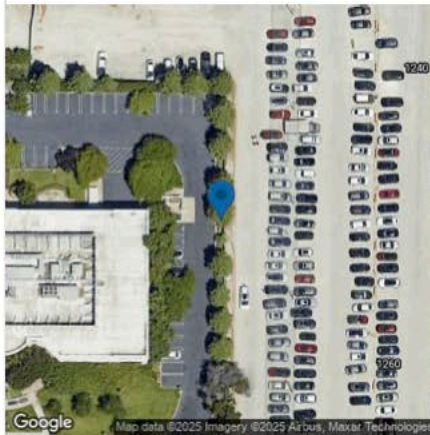
August 11, 2024

Sequoia sempervirens ID# 7
Coast Redwood

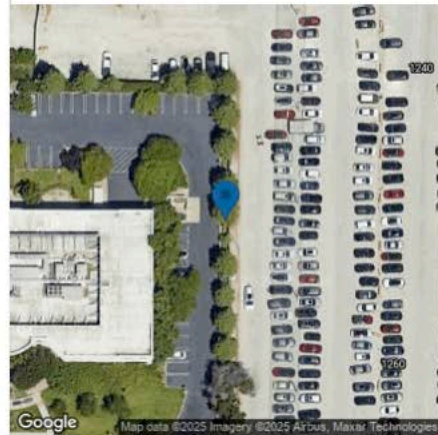
DBH: 18"



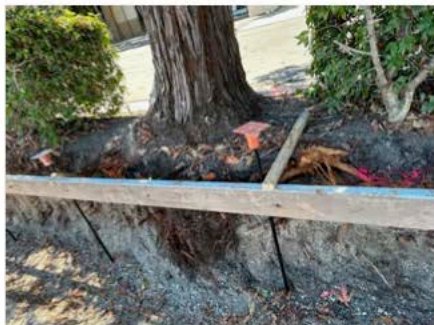
Remove, grind stump, and replace
with 15 gallon Emerald Sunshine Elm
Baby Redwood, barrier in tact



Remove, grind stump, and replace
with 15 gallon Emerald Sunshine Elm
No barrier, roots severed up to trunk



Remove, grind stump, and replace
with 15 gallon Emerald Sunshine Elm
No barrier, roots severed up to trunk



August 13, 2024

Sequoia sempervirens ID# 7

Coast Redwood

DBH: 18"



August 9, 2024

Sequoia sempervirens ID# 8

Coast Redwood

DBH: 16"

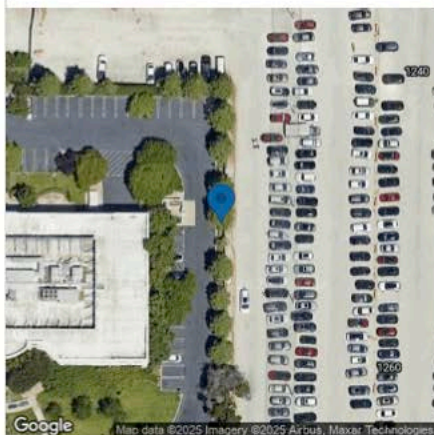


August 11, 2024

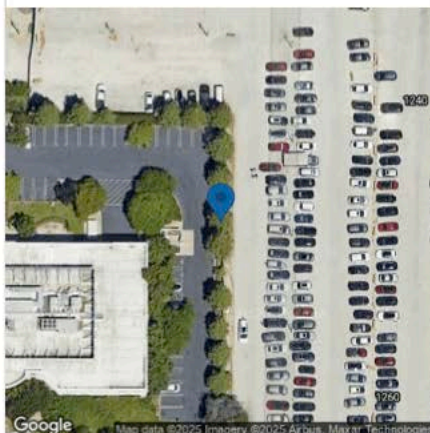
Sequoia sempervirens ID# 8

Coast Redwood

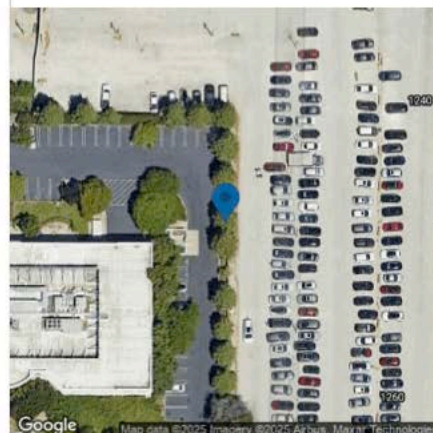
DBH: 16"



Remove, grind stump, and replace
with 15 gallon Emerald Sunshine Elm
No barrier, roots severed up to trunk



Remove, grind stump, and replace
with 15 gallon Emerald Sunshine Elm
No barrier in tact



Remove, grind stump, and replace
with 15 gallon Emerald Sunshine Elm
No barrier in tact



August 13, 2024

Sequoia sempervirens ID# 8

Coast Redwood

DBH: 16"



August 13, 2024

Sequoia sempervirens ID# 8

Coast Redwood

DBH: 16"

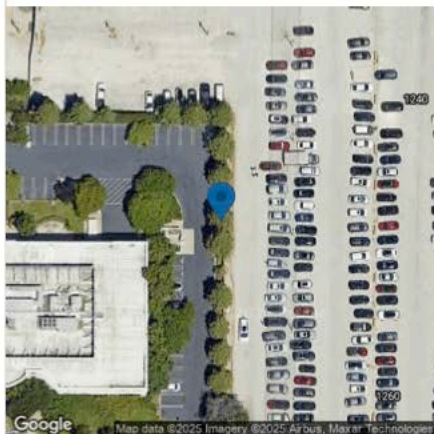


August 13, 2024

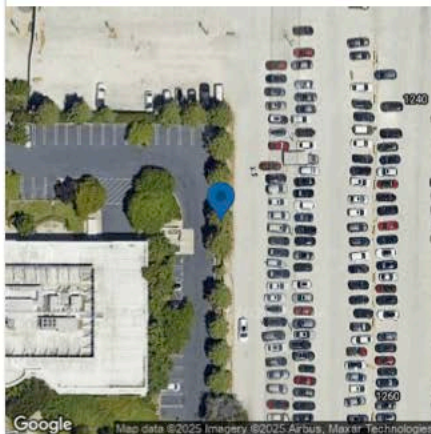
Sequoia sempervirens ID# 8

Coast Redwood

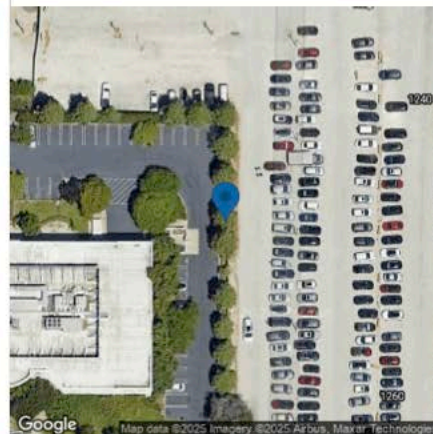
DBH: 16"



Remove, grind stump, and replace
with 15 gallon Emerald Sunshine Elm
No barrier in tact



Remove, grind stump, and replace
with 15 gallon Emerald Sunshine Elm
No barrier in tact



Remove, grind stump, and replace
with 15 gallon Emerald Sunshine Elm
No barrier in tact



August 9, 2024

Sequoia sempervirens ID# 9
Coast Redwood

DBH: 15.5"



August 11, 2024

Sequoia sempervirens ID# 9
Coast Redwood

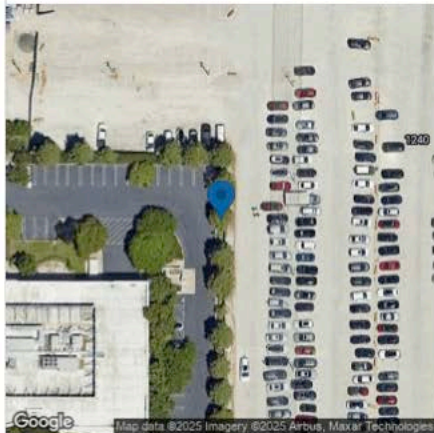
DBH: 15.5"



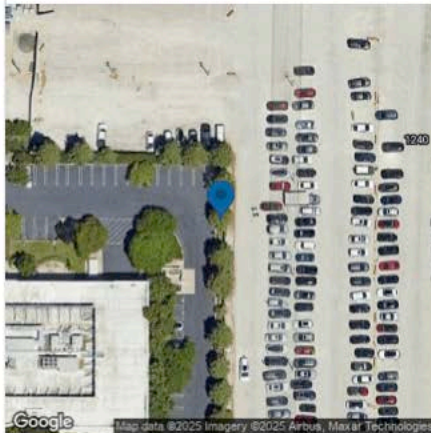
August 11, 2024

Sequoia sempervirens ID# 9
Coast Redwood

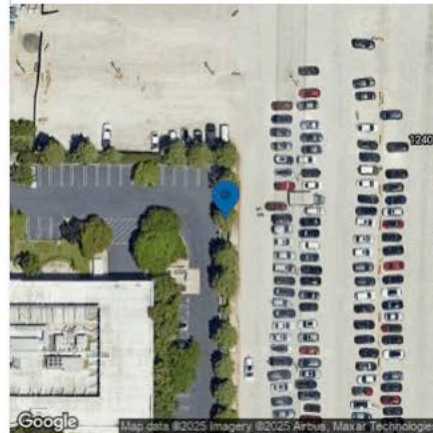
DBH: 15.5"



Remove, grind stump, and replace
with 15 gallon Emerald Sunshine Elm
No barrier, severed roots



Remove, grind stump, and replace
with 15 gallon Emerald Sunshine Elm
No barrier, severed roots



Remove, grind stump, and replace
with 15 gallon Emerald Sunshine Elm
No barrier, severed roots



August 13, 2024

Sequoia sempervirens ID# 9
Coast Redwood

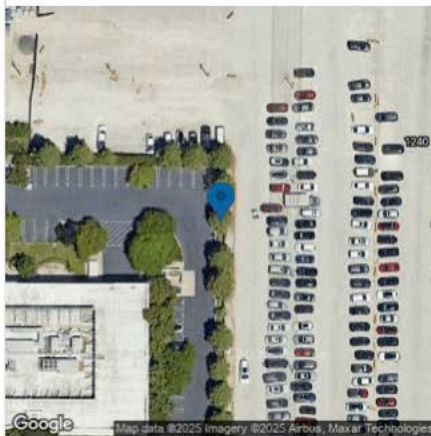
DBH: 15.5"



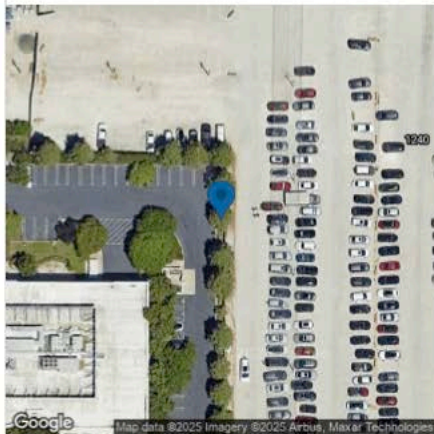
August 13, 2024

Sequoia sempervirens ID# 9
Coast Redwood

DBH: 15.5"



Remove, grind stump, and replace
with 15 gallon Emerald Sunshine Elm
No barrier, severed roots



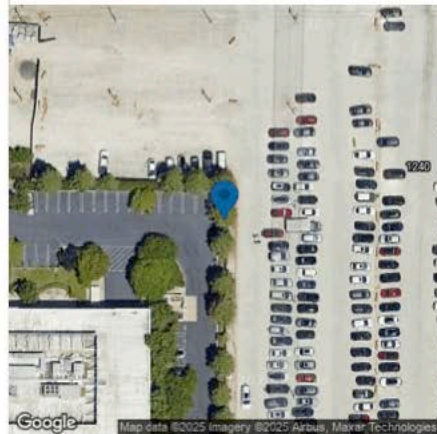
Remove, grind stump, and replace
with 15 gallon Emerald Sunshine Elm
No barrier, severed roots



August 9, 2024

Sequoia sempervirens ID# 10
Coast Redwood

DBH: 17.5"



Remove, grind stump, and replace
with 15 gallon Emerald Sunshine Elm
Barrier half in tact but large severed
roots



August 11, 2024

Sequoia sempervirens ID# 10
Coast Redwood
DBH: 17.5"



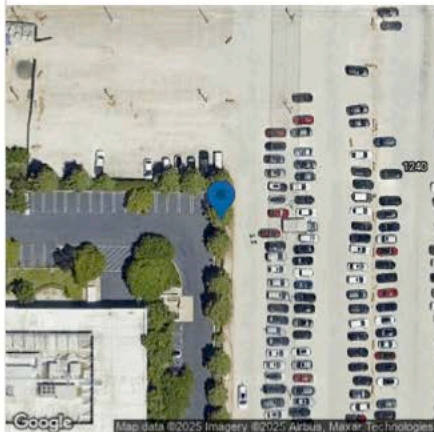
August 11, 2024

Sequoia sempervirens ID# 10
Coast Redwood
DBH: 17.5"

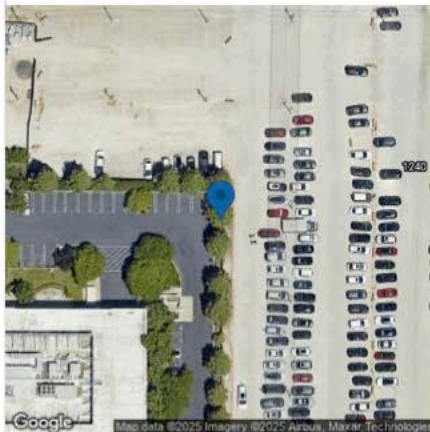


August 13, 2024

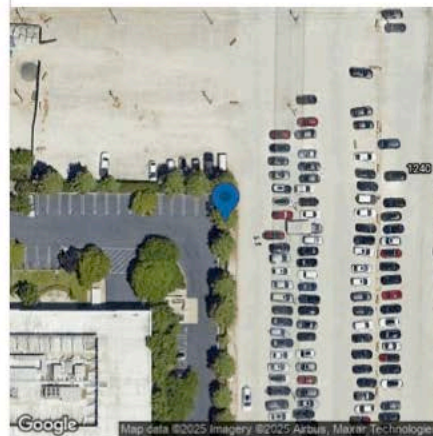
Sequoia sempervirens ID# 10
Coast Redwood
DBH: 17.5"



Remove, grind stump, and replace with 15 gallon Emerald Sunshine Elm Barrier half in tact but large severed roots



Remove, grind stump, and replace with 15 gallon Emerald Sunshine Elm Barrier half in tact but large severed roots



Remove, grind stump, and replace with 15 gallon Emerald Sunshine Elm Barrier half in tact but large severed roots



August 9, 2024

Sequoia sempervirens ID# 11
Coast Redwood

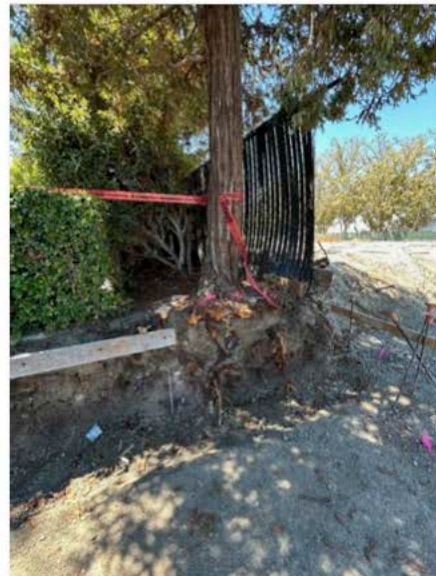
DBH: 13"



August 11, 2024

Sequoia sempervirens ID# 11
Coast Redwood

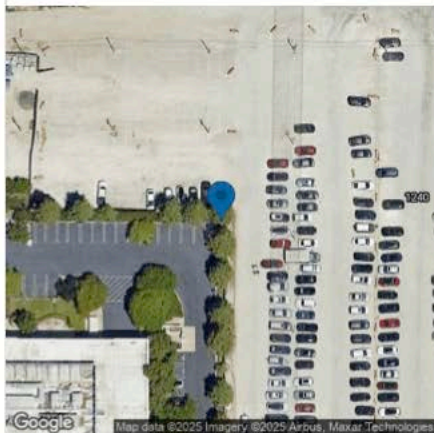
DBH: 13"



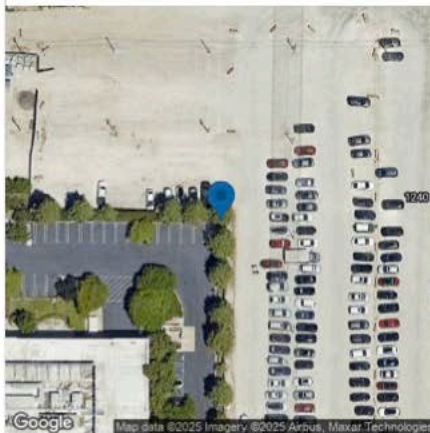
August 13, 2024

Sequoia sempervirens ID# 11
Coast Redwood

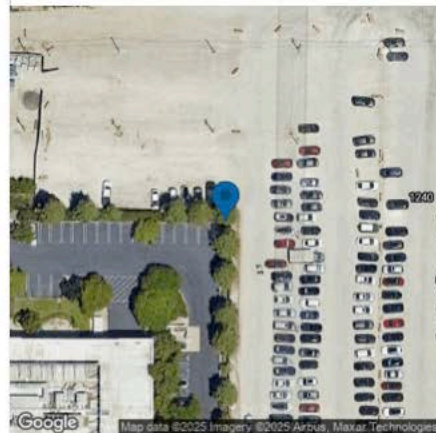
DBH: 13"



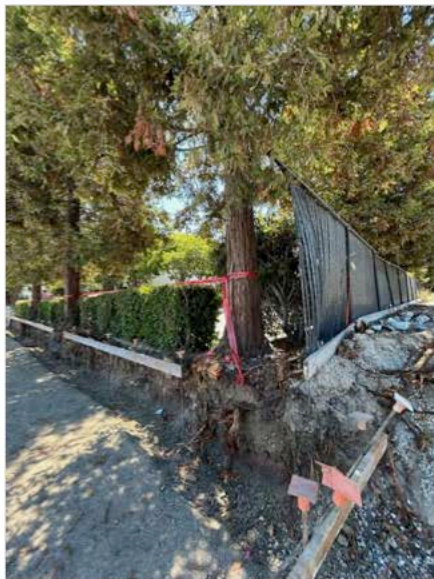
Remove, grind stump, and replace
with 15 gallon Emerald Sunshine Elm
No barrier, removal



Remove, grind stump, and replace
with 15 gallon Emerald Sunshine Elm
No barrier, removal



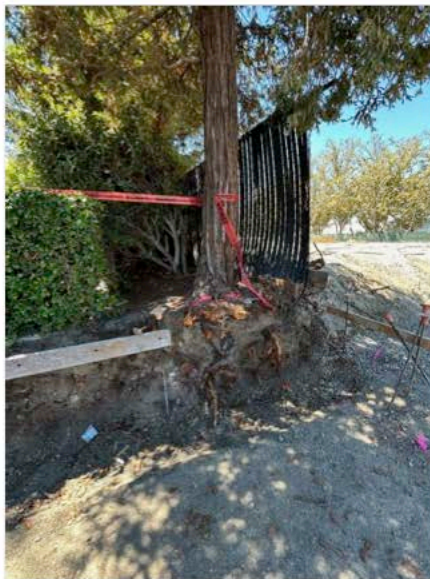
Remove, grind stump, and replace
with 15 gallon Emerald Sunshine Elm
No barrier, removal



August 13, 2024

Sequoia sempervirens ID# 11
Coast Redwood

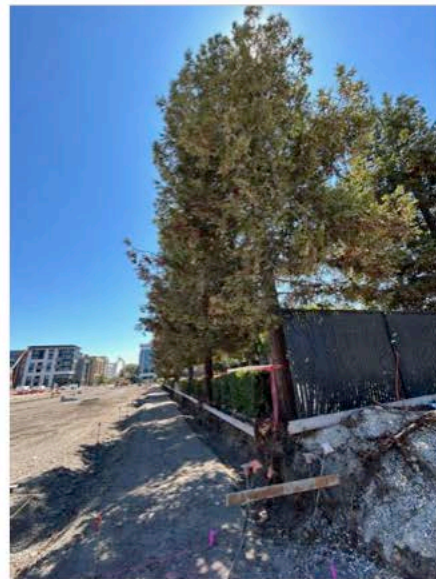
DBH: 13"



August 13, 2024

Sequoia sempervirens ID# 11
Coast Redwood

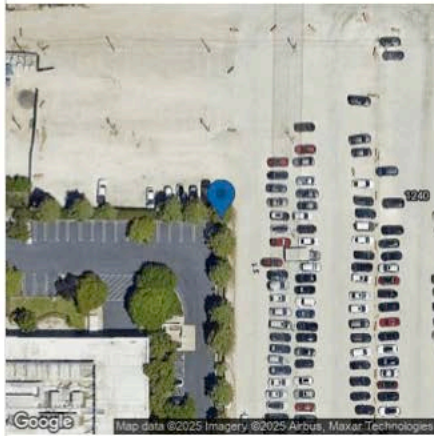
DBH: 13"



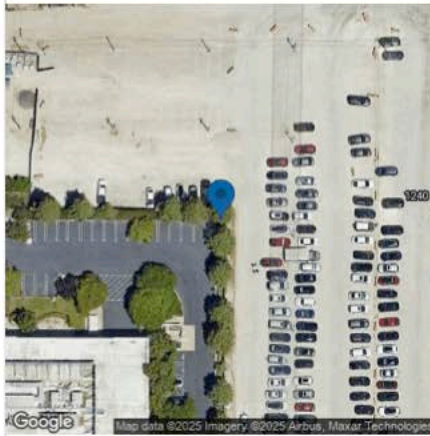
August 13, 2024

Sequoia sempervirens ID# 11
Coast Redwood

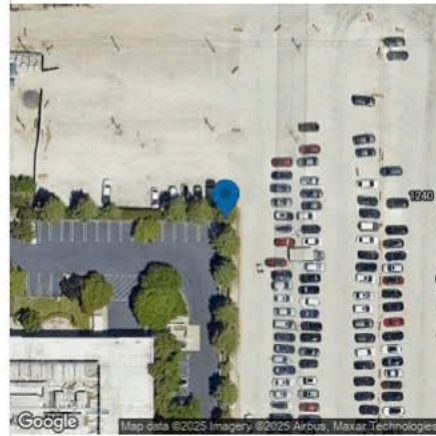
DBH: 13"



Remove, grind stump, and replace
with 15 gallon Emerald Sunshine Elm
No barrier, removal



Remove, grind stump, and replace
with 15 gallon Emerald Sunshine Elm
No barrier, removal



Remove, grind stump, and replace
with 15 gallon Emerald Sunshine Elm
No barrier, removal