



**DATE:** June 18, 2019

**CATEGORY:** Consent

**DEPT.:** Public Works

**TITLE:** **Police/Fire Training and Classroom Facility at Fire Station No. 5, Project 18-41 – Approve Schematic Design**

### **RECOMMENDATION**

Approve the schematic design of the building for the new Police/Fire Training and Classroom at Fire Station No. 5 and authorize detailed design to proceed.

### **BACKGROUND**

On April 24, 2018, the City Council approved a professional services agreement with Perkins-Eastman/Dougherty Architects and authorized staff to proceed with the design of the building for the Police/Fire Training and Classroom at Fire Station No. 5.

The new training and classroom facility will be used mainly by the Police Department for situational and operational training and for staging for Shoreline Amphitheatre and other North Bayshore events. The Police and Fire Departments will also use the facility to host training with both internal staff and personnel from other agencies.

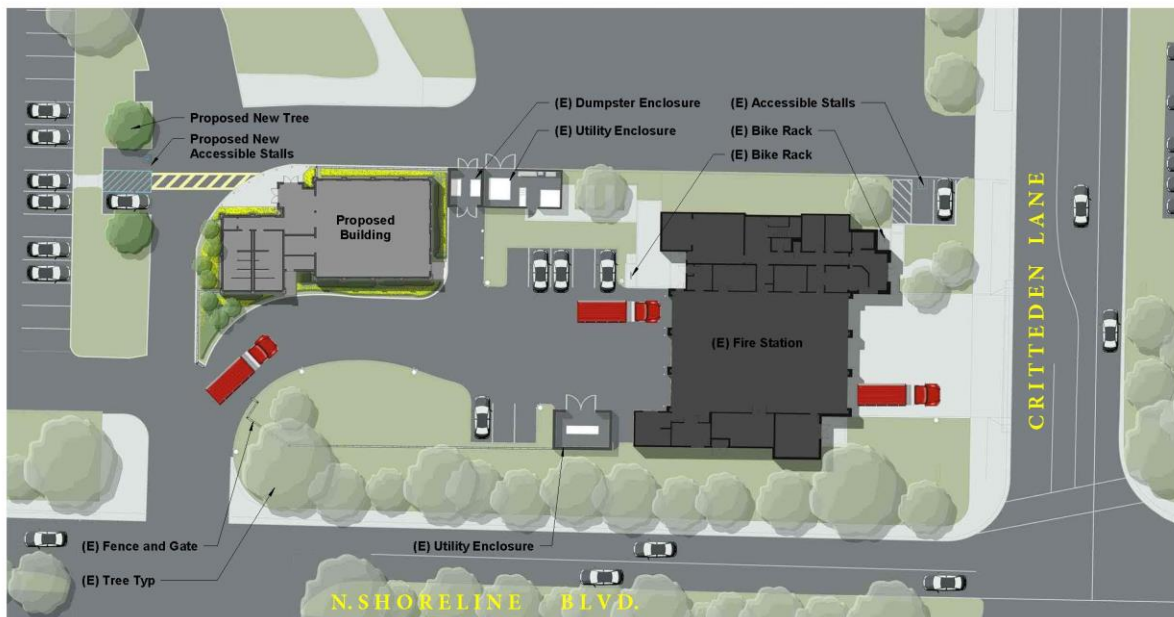
The conceptual plans include a building of approximately 3,200 square feet consisting of a large training room, lobby, restrooms, and utility and support storage areas.

### **ANALYSIS**

The designated area for the training classroom was part of the original design for Fire Station No. 5. An area was landscaped with turf and reserved for the facility. The site is currently a flat grass field. The recommended design was developed to be compatible with the existing fire station, both in terms of operations and architecture. The site plan, floor plan, and building are described further below.

## Site Plan (Figure 1)

The proposed building is located on the northeast corner of the Fire Station No. 5 site, with parking provided in the adjacent Shoreline Amphitheatre parking lot. Events at the facility would be coordinated with the Community Services Department and Amphitheatre events to avoid parking conflicts. The building entrance is at the northeast corner of the building, facing two new accessible parking spaces that will be constructed for the facility. Existing Fire Station No. 5 parking and access will not be affected.

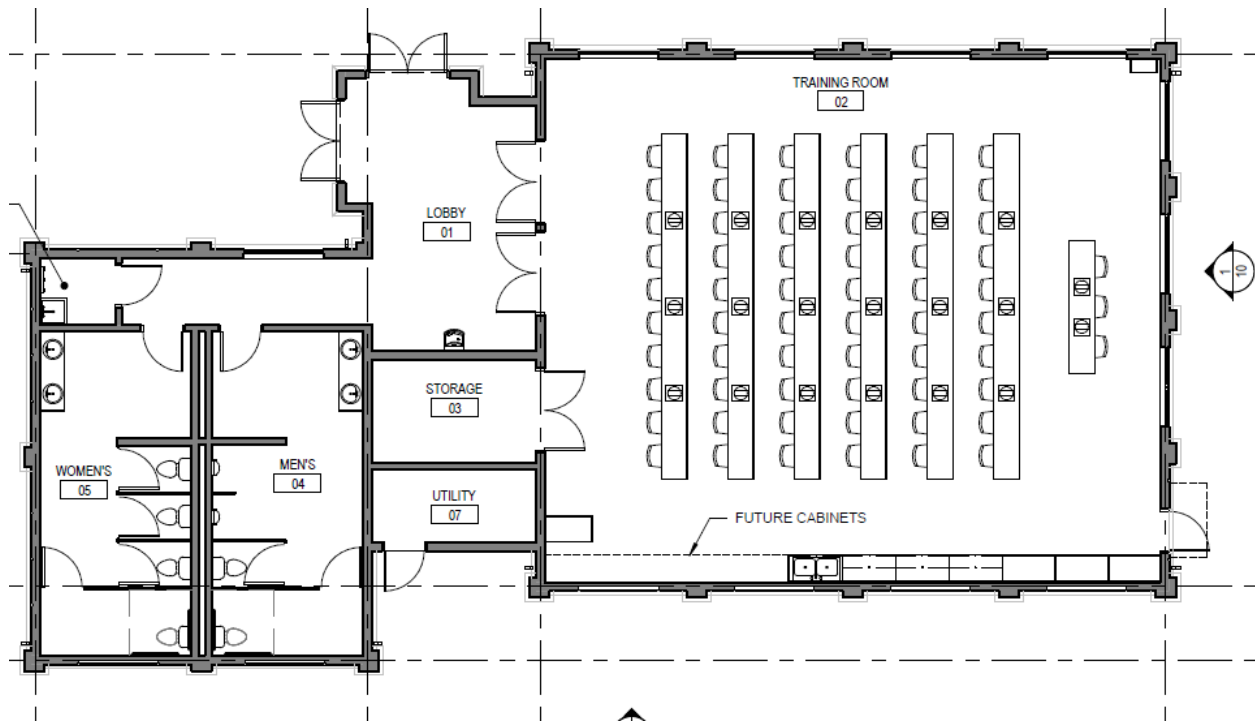


Site Plan

Figure 1. Fire Station 5 Site with New Proposed Training Classroom

## Floor Plan

The new building includes a large training room, lobby, restrooms, and utility and support storage areas (see Figure 2). The main lobby and entry to the building is located directly across the parking lot with a recognizable smaller tower that replicates the main entrance to the fire station. The training room can seat 60 people with tables. Chairs and tables are designed to be removable and can be placed in the adjacent storage and replaced with mats for tactical and defense training by the Police Department. Restrooms are located on the left side of the lobby. The training room will be equipped with the state-of-the-art media and presentation equipment to accommodate the latest technology for satellite and teleconferencing training.



**Figure 2. Proposed Training Classroom Layout**

## Architecture

The smaller tower and the finish materials are designed to provide visibility from Shoreline Boulevard, creating a strong and welcoming entrance to the facility (see Figure 3). The exterior of the building is mostly a warm, smooth, natural cement plaster finish to complement the red brick. The red brick at the tower ties the building to that of the fire station main entrance. The metal roof is both traditional and functional, reducing heat transfer to the interior spaces. The mechanical rooftop equipment will be screened from view by setbacks from the roof edge and screening at the flat roof area.



**Figure 3. Proposed Classroom (Lower Left) and Photo of Fire Station 5 (Top Right)**

The durability of the building material will provide a cost-effective, long-lasting building compatible with those of police and fire facilities in government settings. The color of the plaster wall along the west elevation will be painted darker to break up the continuous massing of the walls at the back of the building on the fire truck drive side (see Figure 4).



**Figure 4. View of New Facility's West Elevation along Fire Station Driveway**

On May 15, 2019, staff presented the project to the Development Review Committee (DRC) for input. The DRC reviewed the project and determined it has satisfied the design criteria. Staff will incorporate additional features discussed by the DRC into the final design plans such as: screening mechanical equipment from the rooftop, finding opportunities for additional tree canopy where possible, adding bike racks for public and Police Officers' use, and having adequate signage on the main entrance to the building to prevent entrance and perception of the building for public use.

With approval of the schematic design, the consultants are scheduled to complete design documents in spring 2020. Following bidding and award of a construction contract, the project will start construction in summer 2020.

### **Public Art**

The project will include public art, and staff will meet with the Visual Arts Committee to start the artist and art selection process this summer.

### **FISCAL IMPACT**

Police/Fire Training and Classroom Facility at Fire Station No. 5, Design, Project 18-41, is funded with \$644,000 from the Shoreline Regional Park Community Fund. There is adequate funding for design efforts to complete the construction documentation and bidding of the project. Additionally, a separate \$2.8 million project is proposed in the Fiscal Year 2019-20 Capital Improvement Program to fund construction.

### **ALTERNATIVES**

1. Do not continue with the construction documentation for the project and postpone all improvements.
2. Provide other direction.

**PUBLIC NOTICING** – Agenda posting.

Prepared by:

Frederick F. Fallah  
Senior Project Manager

Reviewed by:

Lisa Au  
Principal Civil Engineer/Capital Projects

Approved by:

Michael A. Fuller  
Public Works Director

Audrey Seymour Ramberg  
Assistant City Manager/  
Chief Operating Officer

FFF/TS/2/CAM  
943-06-18-19CR-3  
18701

cc: PC, FC, PWD, APWD – Solomon, PCE – Au, SPM – Fallah, APWD – Hosfeldt,  
CSD(A), PA – Li, BDS – Chew, SCE – Gunn, SMA – Goedicke, SM(A) –  
Chilkotowsky, City Biologist – Higgins, PCE – Arango, AAI – Doan, File (18-  
41)