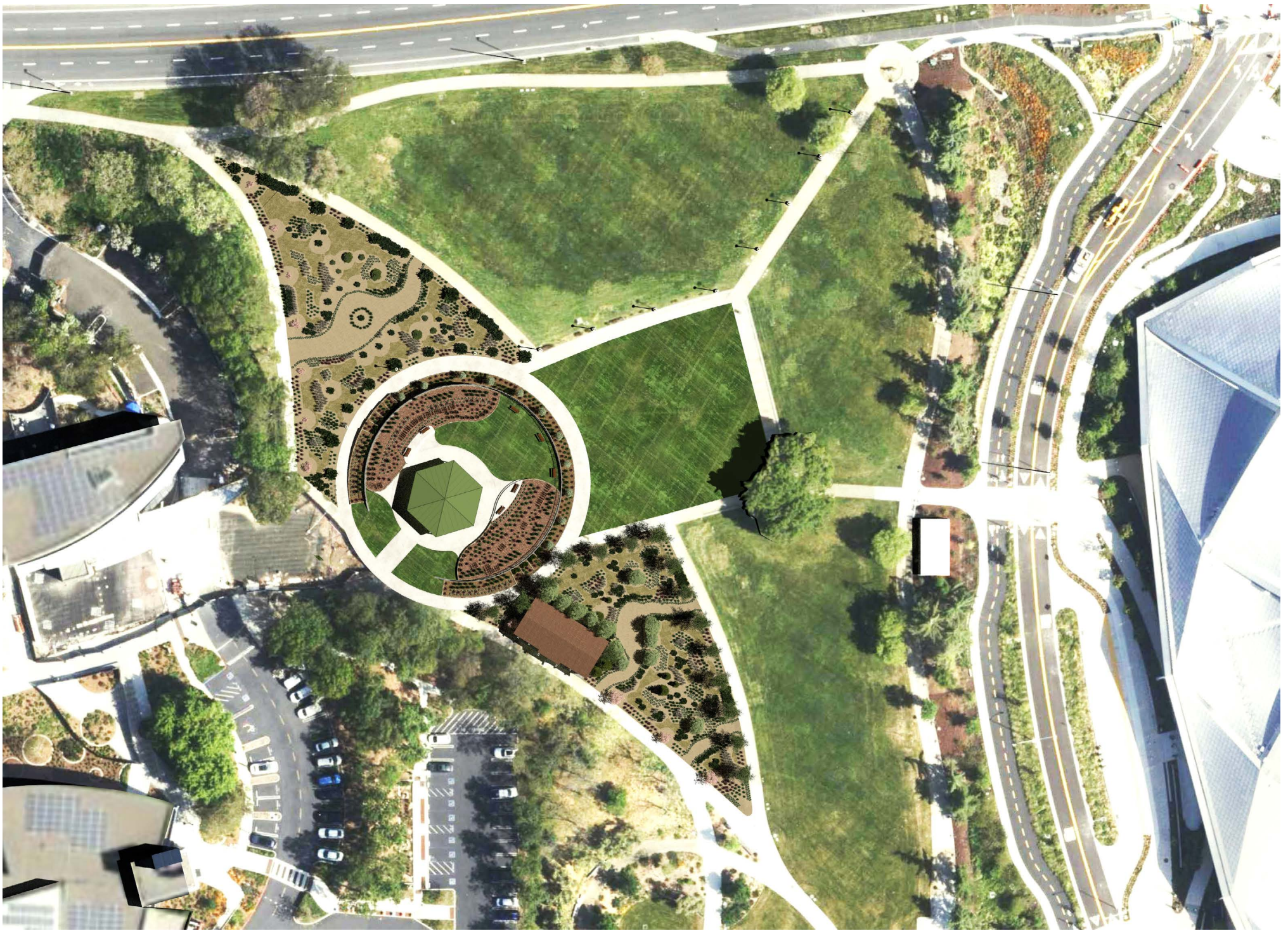
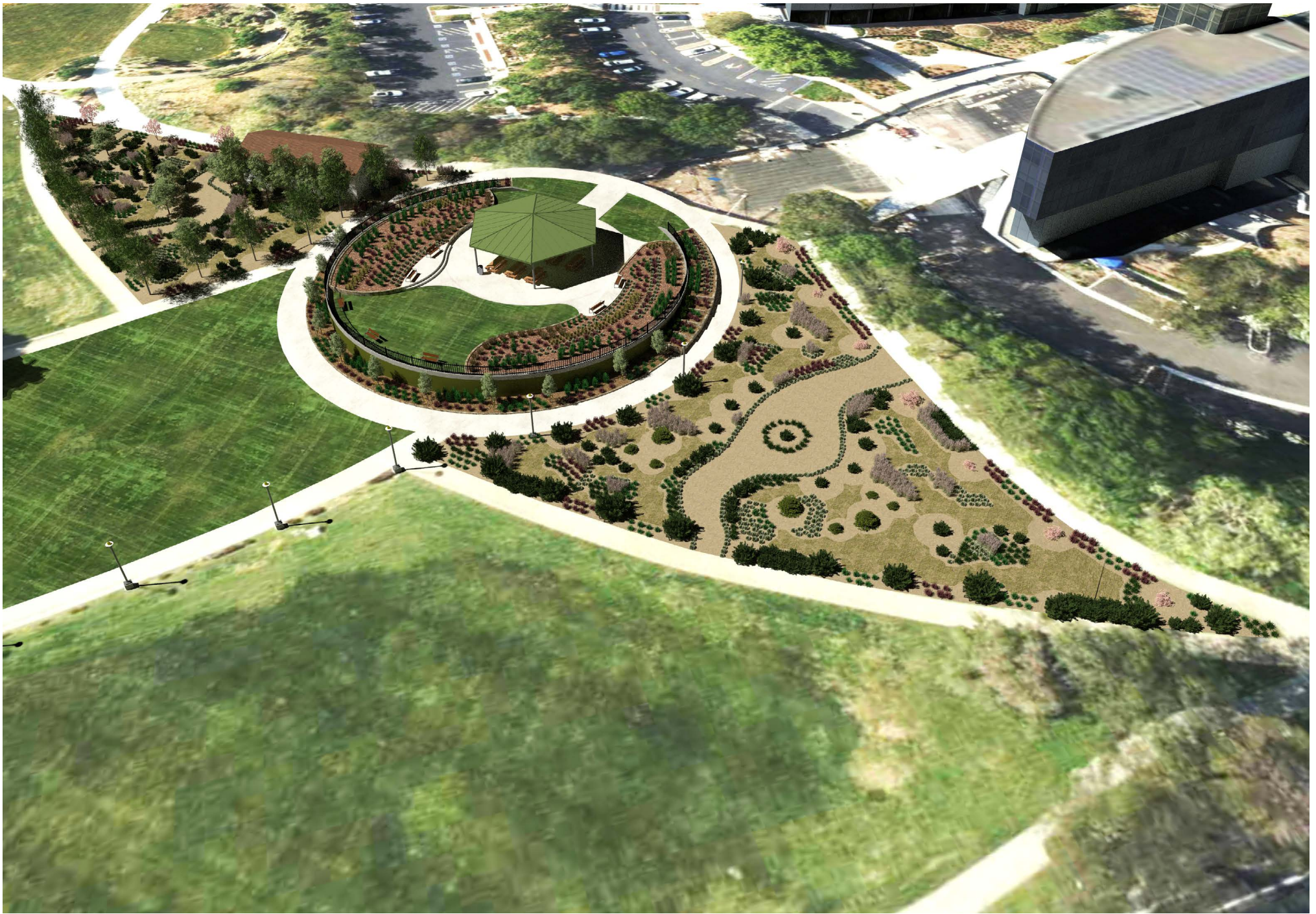


Camera View Locations



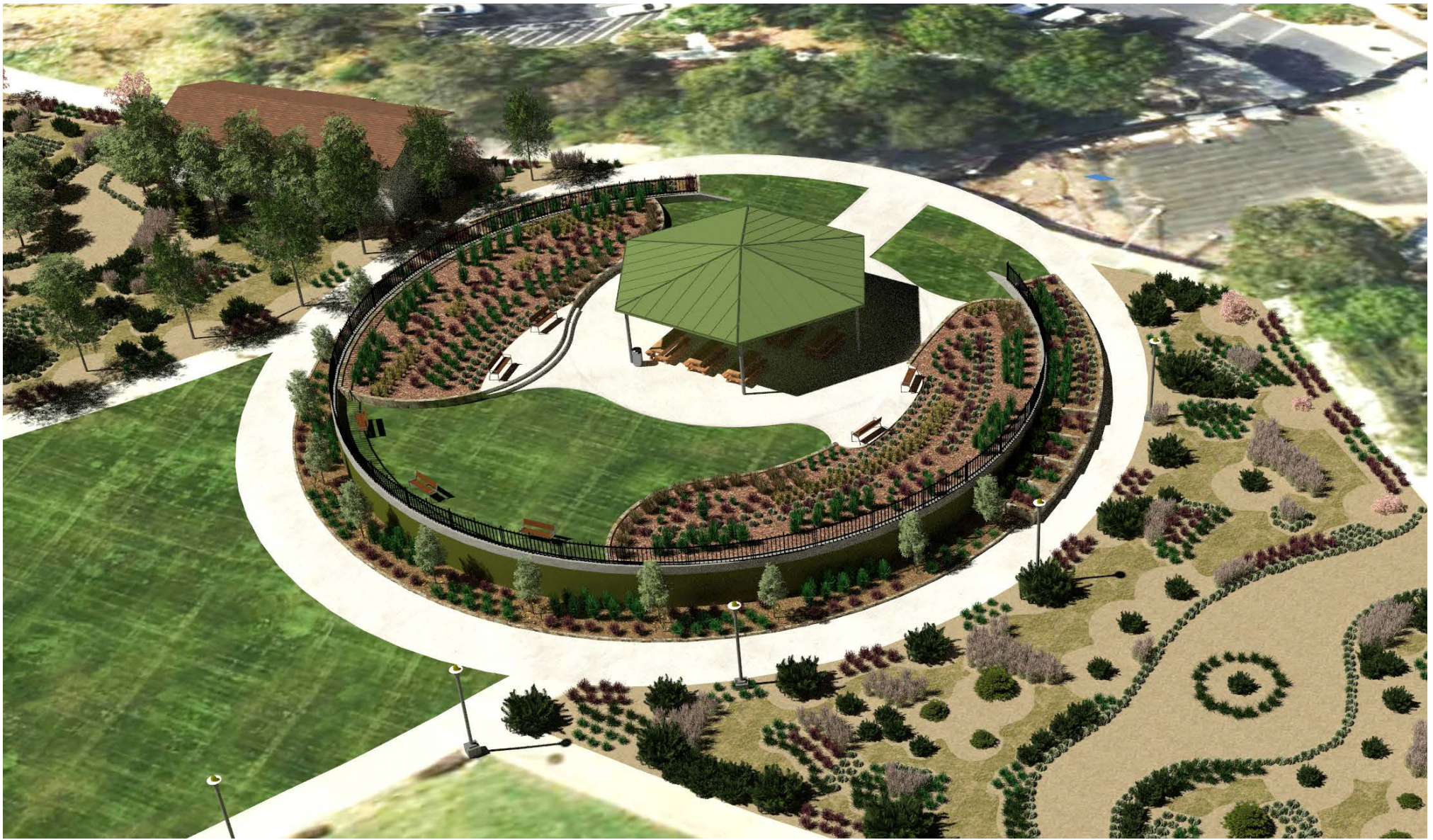
## Overhead View

Proposed Partially Buried Reservoir and Pump House



## Angled Overhead View

Proposed Partially Buried Reservoir With Added Grass and Native Landscaping



**Angled Overhead View 2, Reservoir Focus**  
Proposed Partially Buried Reservoir



**Camera Location "A", View Towards Reservoir**  
**Existing Conditions**



**Camera Location "A", View Towards Reservoir**

**Proposed Partially Buried Reservoir**



**Camera Location "A", View Towards Reservoir**  
**Underground Reservoir Location**



**Camera Location "B", View Towards Reservoir**

**Existing Conditions**





**Camera Location "B", View Towards Reservoir**  
Proposed Partially Buried Reservoir



**Camera Location "B", View Towards Reservoir**  
**Underground Reservoir Location**



**Camera Location "C", View Towards Reservoir**

**Existing Conditions**



**Camera Location "C", View Towards Reservoir**  
Proposed Partially Buried Reservoir



**Camera Location "C", View Towards Reservoir**  
Underground Reservoir Location



**Camera Location "D", View Towards Reservoir**  
**Existing Conditions**



**Camera Location "D", View Towards Reservoir**  
Proposed Partially Buried Reservoir



**Camera Location "D", View Towards Reservoir**  
**Underground Reservoir Location**