



DATE: October 2, 2018

CATEGORY: Consent

DEPT.: Public Works

TITLE: **Colony Street Connection to Permanente Creek Trail, Project 18-48 – Authorize Professional Services Agreement**

RECOMMENDATION

Authorize the City Manager to execute a professional services agreement with Parisi CSW Design Group of Redwood City to provide engineering design services for the Colony Street Connection to Permanente Creek Trail, Project 18-48, in a not-to-exceed amount of \$185,000.

BACKGROUND

The Permanente Creek Trail runs from the north side of Shoreline at Mountain View park to West Middlefield Road. There are no existing access points onto the trail between Charleston Road and Old Middlefield Way, which are approximately 2,500' apart. Though there is an access to the trail from the north side of Old Middlefield Way, this access is not ideal for novice bicyclists due to high vehicle volumes and speeds and the presence of on-street parking. The proposed connection will enhance access to the trail for the Colony Street/Plymouth Street neighborhood.

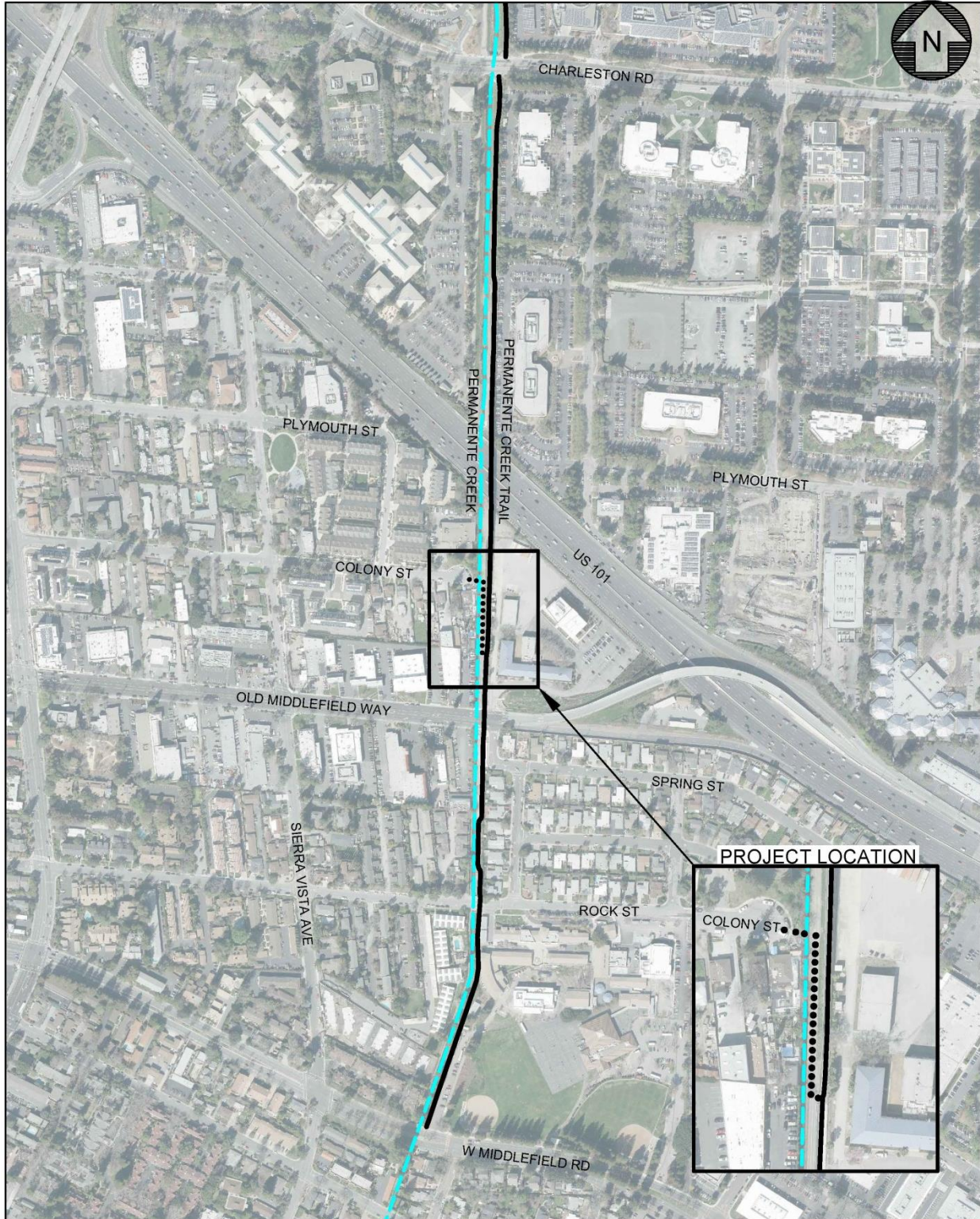
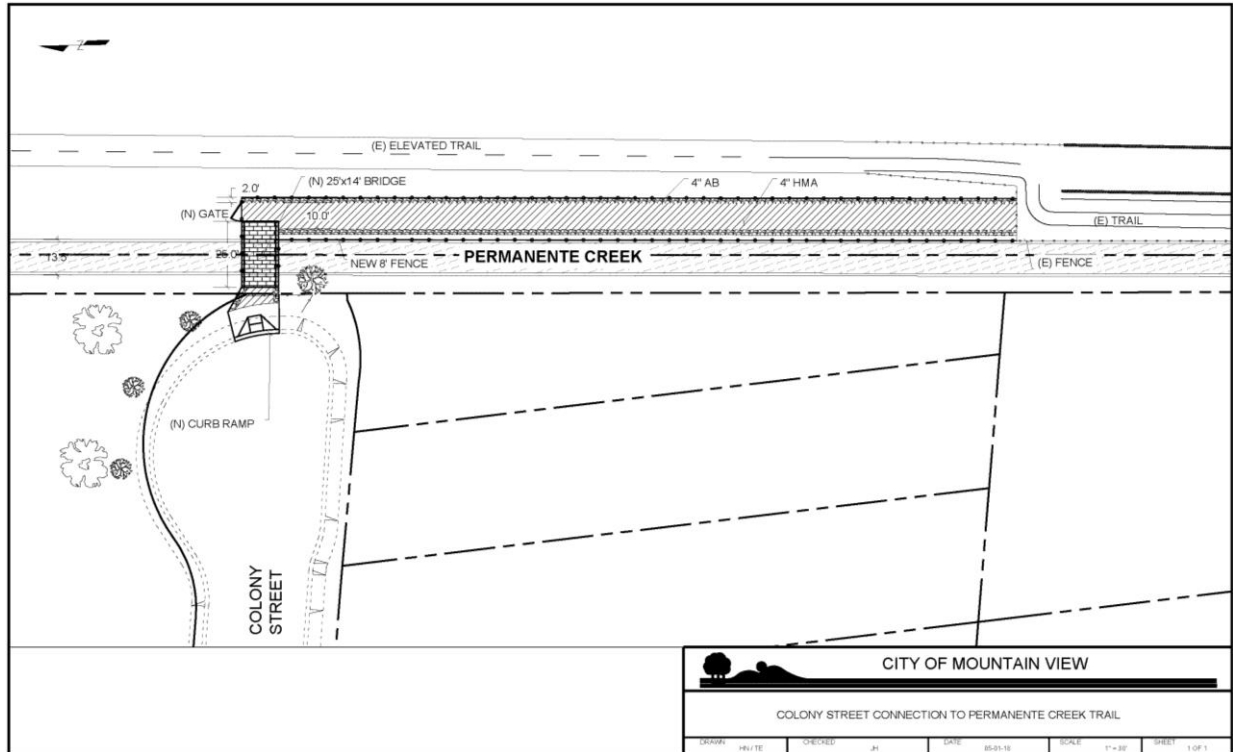


Exhibit A – Project Location Map

The project scope includes a 10' wide trail with 2' wide shoulders on both sides (Caltrans Class I), a crossing over the creek, and an access point at the eastern end of Colony Street (see Exhibit B). The new trail is proposed to be constructed on an existing creek maintenance area that belongs to the Santa Clara Valley Water District.



**Exhibit B – Proposed Improvements for
Colony Street Connection to Permanente Creek Trail**

ANALYSIS

Staff issued a Request for Proposals (RFP) in July 2018 for design of the project and two firms responded. After careful review, staff recommends Parisi CSW Design Group on the basis of their written proposal, vast experience in completing similar projects, and understanding of the project goals.

The scope of work includes: reviewing relevant background information; surveying, utility locating, conducting a tree survey, and geotechnical analysis; obtaining permits and design approval from appropriate agencies/stakeholders; preparing plans, specifications, and cost estimates; providing bid and construction support; and

preparing record drawings (see Attachments 1 and 2 for Parisi CSW Design Group’s Scope of Work and Fee Schedule, respectively).

The recommended contract is \$163,009 for basic services and \$21,991 for additional services, for a total of \$185,000. The additional service budget is an allowance for extra work not covered by basic services. Staff considers this fee to be fair and reasonable. The estimated project cost is:

Construction	\$ 675,000
Construction Contingency	68,000
Engineering Design Services	185,000
City Project Management	75,000
Construction Inspection and Testing	60,000
Miscellaneous	<u>10,000</u>
Subtotal	\$1,073,000
City Administration @ 6.5%	<u>70,000</u>
TOTAL PROJECT COST	<u>\$1,143,000</u>

If the agreement is approved by City Council, the design will commence in November 2018 and be completed by November 2019.

FISCAL IMPACT

Colony Street Connection to Permanente Creek Trail, Project 18-48, is funded with \$578,000 from the CIP Reserve Fund and \$578,000 from the Shoreline Regional Park Fund, for a total funding of \$1,156,000.

Including the proposed contract amount of \$185,000, the estimated total project cost is \$1,143,000. Sufficient funding is available to complete the project based on the current cost estimate.

ALTERNATIVES

1. Do not authorize professional services agreement with Parisi CSW Design Group and direct staff to issue the RFP to other engineering firms.
2. Do not proceed with the project at this time.
3. Provide other direction.

PUBLIC NOTICING – Agenda posting.

Prepared by:

Joy Houghton
Associate Engineer

Reviewed by:

Lisa Au
Principal Civil Engineer

Approved by:

Michael A. Fuller
Public Works Director

Audrey Seymour Ramberg
Assistant City Manager

JH/DWG/3/CAM
945-10-02-18CR

- Attachments:
1. Parisi CSW Design Group's Scope of Work
 2. Parisi CSW Design Group's Fee Schedule

cc: ACDD, PCE – Au, TE, PCE – Arango, ZA, ACE – Gunn, SMA – Goedicke, AAI – Doan, PA – Li