

Shoreline Boulevard at Highway 101 Bicycle/Pedestrian Bridge Preliminary Conceptual Design

City Council Study Session - April 28, 2020

Tina Tseng & Lisa Au
Public Works Department

Project History Planning Guidelines

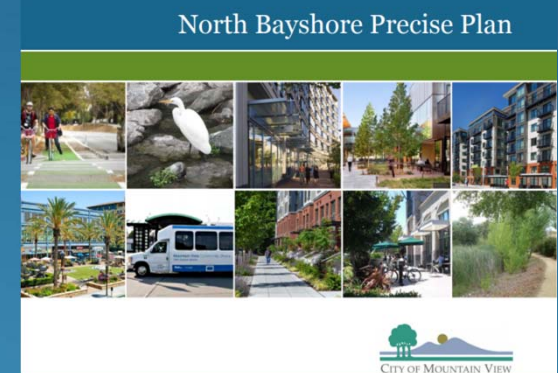
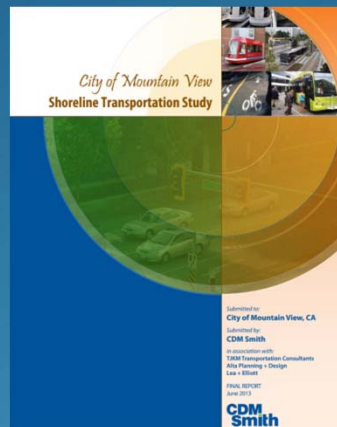
Overview

A. Project History

- Planning Guidelines

- B. Design Parameters
- C. Goals & Council Questions
- D. Bridge Components
- E. Project Budget
- F. Next Steps
- G. Summary of Council Questions

- Shoreline Transportation Study, 2013
- Shoreline Boulevard Corridor Study, 2014
- North Bayshore Precision Plan



Project History

Long-Term Improvements

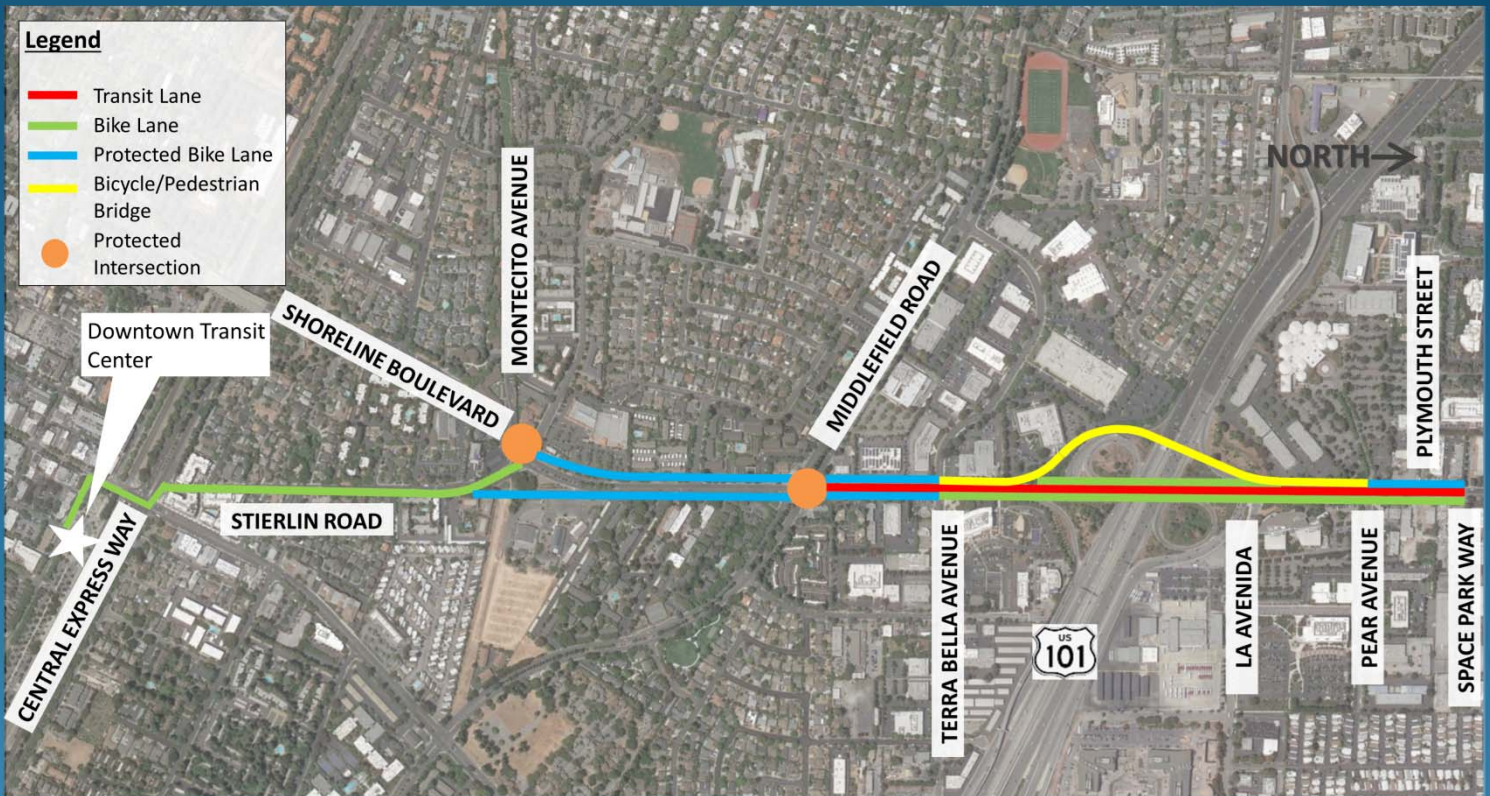
Overview

A. Project History

- Planning Guidelines

- Long-Term Improvements

- B. Design Parameters
- C. Goals & Council Questions
- D. Bridge Components
- E. Project Budget
- F. Next Steps
- G. Summary of Council Questions



Project History

Bridge Planning Concept

Overview

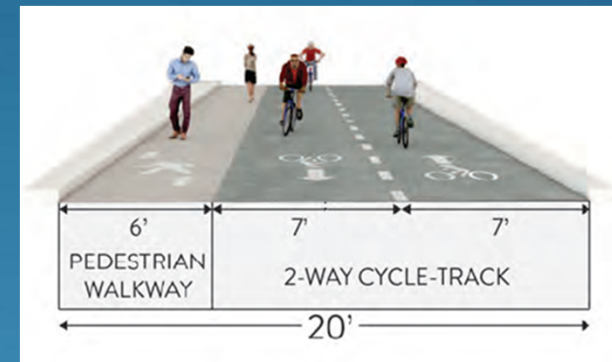
A. Project Background

- Planning Guidelines
- Long-Term Improvements

- **Bridge Planning Concept**

- B. Design Parameters
- C. Goals & Council Questions
- D. Bridge Components
- E. Project Budget
- F. Next Steps
- G. Summary of Council Questions

- A 0.67 mile long off-road bicycle/pedestrian crossing
- Two 7' lanes for bicyclists and a 6' lane for pedestrians
- Supports for the future installation of a 12" recycled water pipeline.



Overview

- A. Project Background
- B. Design Parameters**
- C. Goals & Council Questions
- D. Bridge Components
- E. Project Budget
- F. Next Steps
- G. Summary of Council Questions

Design Parameters

- Create functional pedestrian/bicycle network
- Provide unimpeded bicyclist and pedestrian access across Highway 101
- Design a structure that optimizes life cycle cost
- Improve intermodal traffic operation
- Meet the required clearances over Highway 101
- Minimize right-of-way acquisitions

Overview

- A. Project Background
- B. Design Parameters
- C. Study Session Goals & Council Questions**
- D. Bridge Components
- E. Project Budget
- F. Next Steps
- G. Summary of Council Questions

Goals and Council Questions

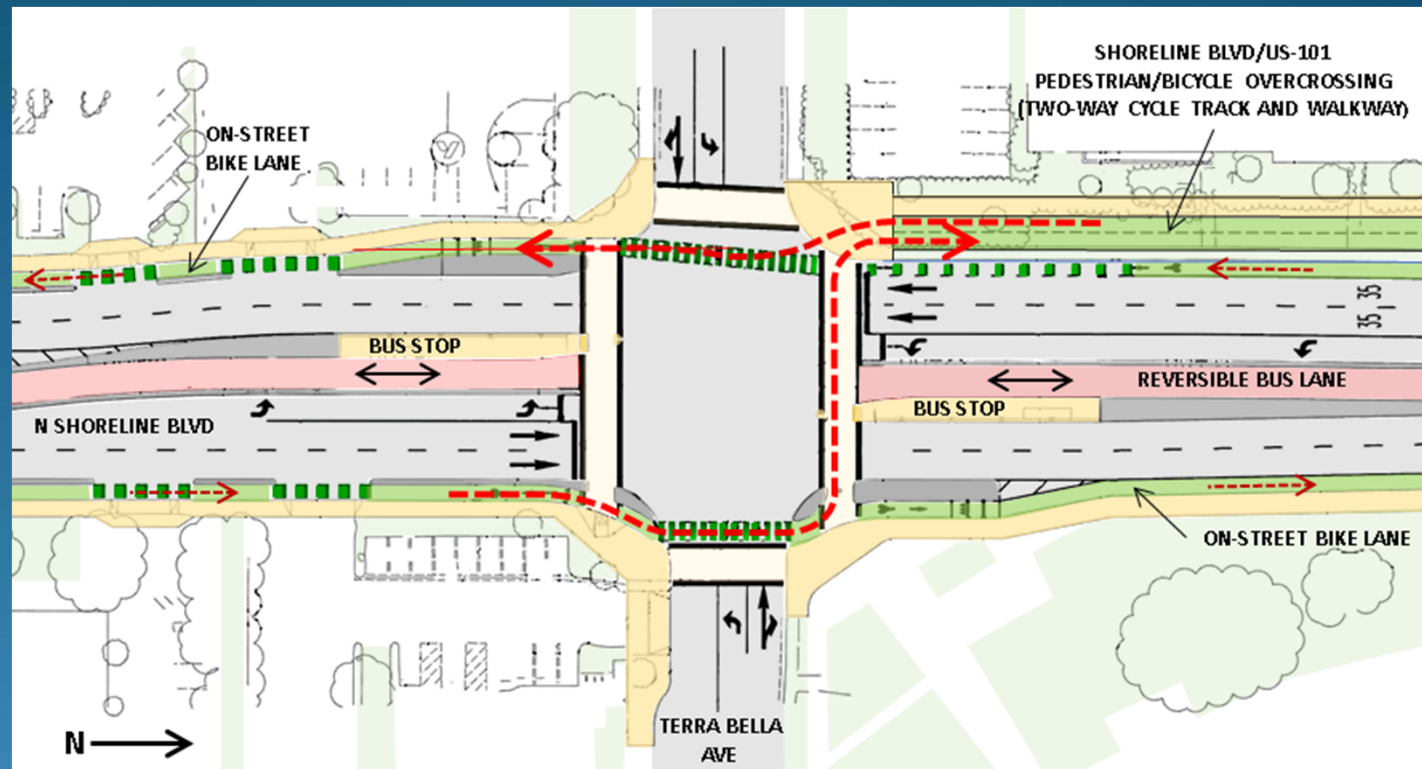
Obtain City Council's comments and directions for each of the 3 bridge components



Overview

- A. Project Background
- B. Design Parameters
- C. Goals & Council Questions
- D. Bridge Components**
 - **Terra Bella Approach**
- E. Project Budget
- F. Next Steps
- G. Summary of Council Questions

Terra Bella Approach



Overview

- A. Project Background
- B. Design Parameters
- C. Goals & Council Questions
- D. Bridge Components**
 - **Terra Bella Approach**
- E. Project Budget
- F. Next Steps
- G. Summary of Council Questions



Terra Bella Approach



Overview

- A. Project Background
- B. Design Parameters
- C. Goals & Council Questions
- D. Bridge Components**
 - **Terra Bella Approach**
- E. Project Budget
- F. Next Steps
- G. Summary of Council Questions



Terra Bella Approach

Council Question #1

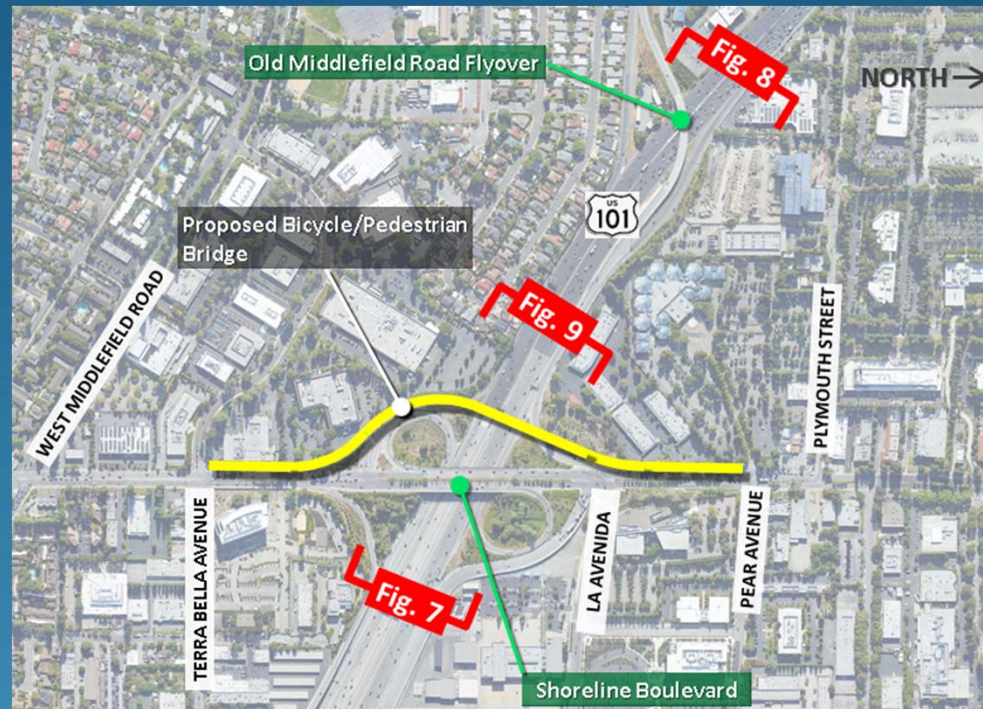
Does the City Council support the recommended concept of the two-way off-street cycle track and sidewalk, including installation of street trees, landscape, and streetlights along the west side of Shoreline Boulevard within the Terra Bella Approach?

Overview

- A. Project Background
- B. Design Parameters
- C. Goals & Council Questions
- D. Bridge Components**
 - Terra Bella Approach
 - **Shoreline Overcrossing**
- E. Project Budget
- F. Next Steps
- G. Summary of Council Questions

Shoreline Overcrossing

Recommends standard box girder structure due to visibility



Overview

- A. Project Background
- B. Design Parameters
- C. Goals & Council Questions
- D. Bridge Components**
 - Terra Bella Approach
 - **Shoreline Overcrossing**
- E. Project Budget
- F. Next Steps
- G. Summary of Council Questions



Shoreline Overcrossing

Enhancement Options



Overview

- A. Project Background
- B. Design Parameters
- C. Goals & Council Questions
- D. Bridge Components**
 - Terra Bella Approach
 - **Shoreline Overcrossing**
- E. Project Budget
- F. Next Steps
- G. Summary of Council Questions



Shoreline Overcrossing

Sample Rendering



Overview

- A. Project Background
- B. Design Parameters
- C. Goals & Council Questions
- D. Bridge Components**
 - Terra Bella Approach
 - **Shoreline Overcrossing**
- E. Project Budget
- F. Next Steps
- G. Summary of Council Questions



Shoreline Overcrossing

Standard Concrete Box Girder Bridge Example



Overview

- A. Project Background
- B. Design Parameters
- C. Goals & Council Questions
- D. Bridge Components**
 - Terra Bella Approach
 - **Shoreline Overcrossing**
- E. Project Budget
- F. Next Steps
- G. Summary of Council Questions

Shoreline Overcrossing

Standard Concrete Box Girder Bridge Example



Overview

- A. Project Background
- B. Design Parameters
- C. Goals & Council Questions
- D. Bridge Components**
 - Terra Bella Approach
 - **Shoreline Overcrossing**
- E. Project Budget
- F. Next Steps
- G. Summary of Council Questions



Shoreline Overcrossing

Standard Concrete Box Girder Bridge Example



Overview

- A. Project Background
- B. Design Parameters
- C. Goals & Council Questions
- D. Bridge Components**
 - Terra Bella Approach
 - **Shoreline Overcrossing**
- E. Project Budget
- F. Next Steps
- G. Summary of Council Questions



Shoreline Overcrossing

Council Question #2

Does the City Council support the recommended standard bridge structure design (concrete box girder) for the proposed Shoreline Overcrossing with optional enhancements to be reviewed and considered by the City Council in a future meeting?

Overview

- A. Project Background
- B. Design Parameters
- C. Goals & Council Questions
- D. Bridge Components**
 - Terra Bella Approach
 - Shoreline Crossing
 - **Pear Avenue Approach**
- E. Project Budget
- F. Next Steps
- G. Summary of Council Questions

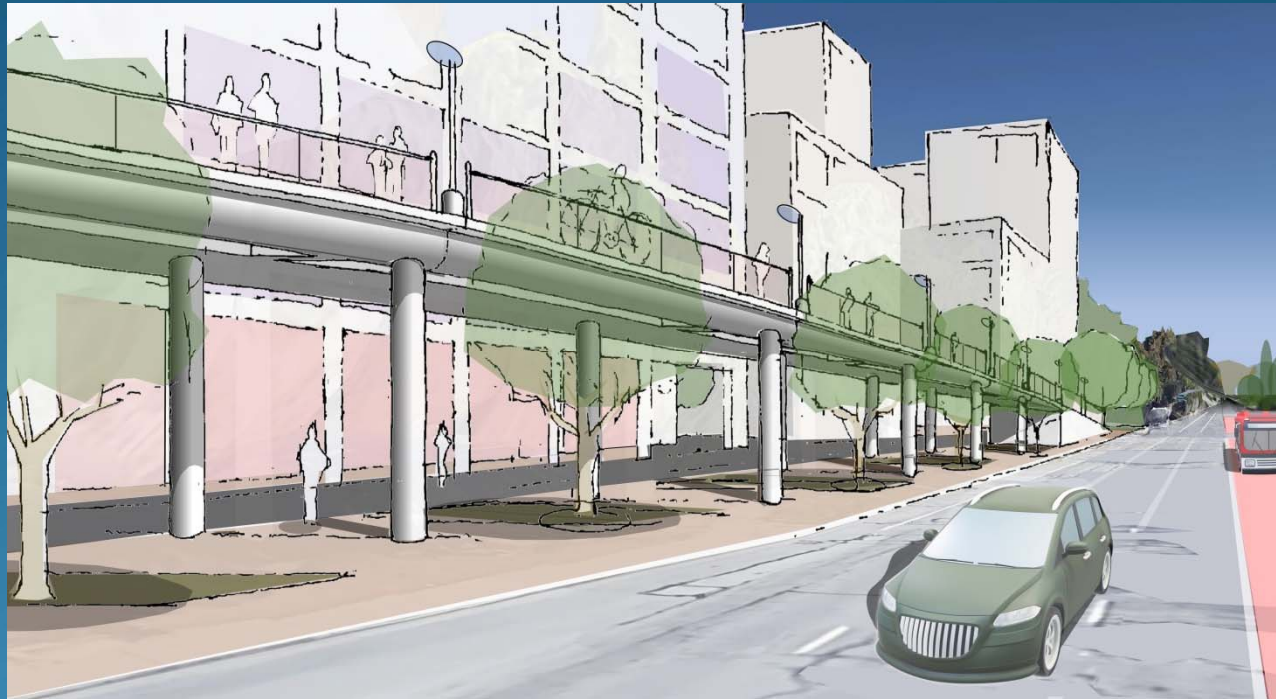
Sample Layout



Overview

- A. Project Background
- B. Design Parameters
- C. Goals & Council Questions
- D. Bridge Components**
 - Terra Bella Approach
 - Shoreline Crossing
 - **Pear Avenue Approach**
- E. Project Budget
- F. Next Steps
- G. Summary of Council Questions

Sample Layout

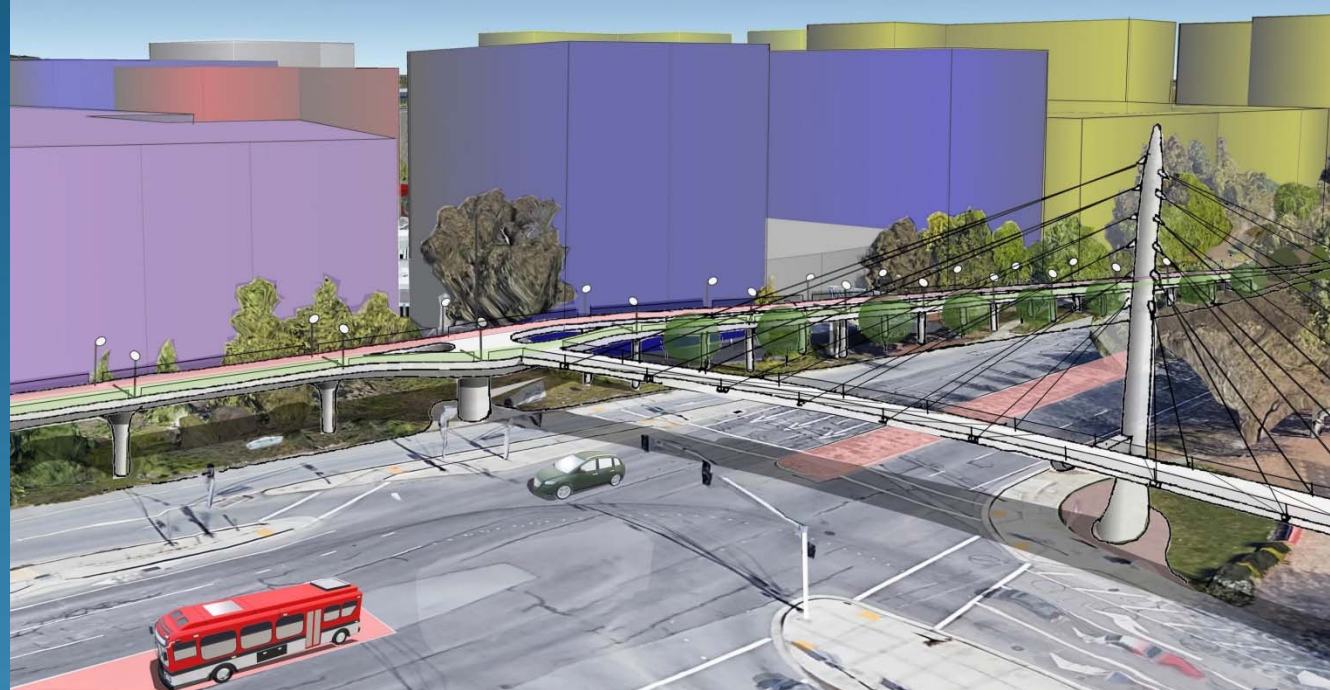


Pear Approach

Overview

- A. Project Background
- B. Design Parameters
- C. Goals & Council Questions
- D. Bridge Components**
 - Terra Bella Approach
 - Shoreline Crossing
 - **Pear Avenue Approach**
- E. Project Budget
- F. Next Steps
- G. Summary of Council Questions

Schematic of the possible future east-west connection

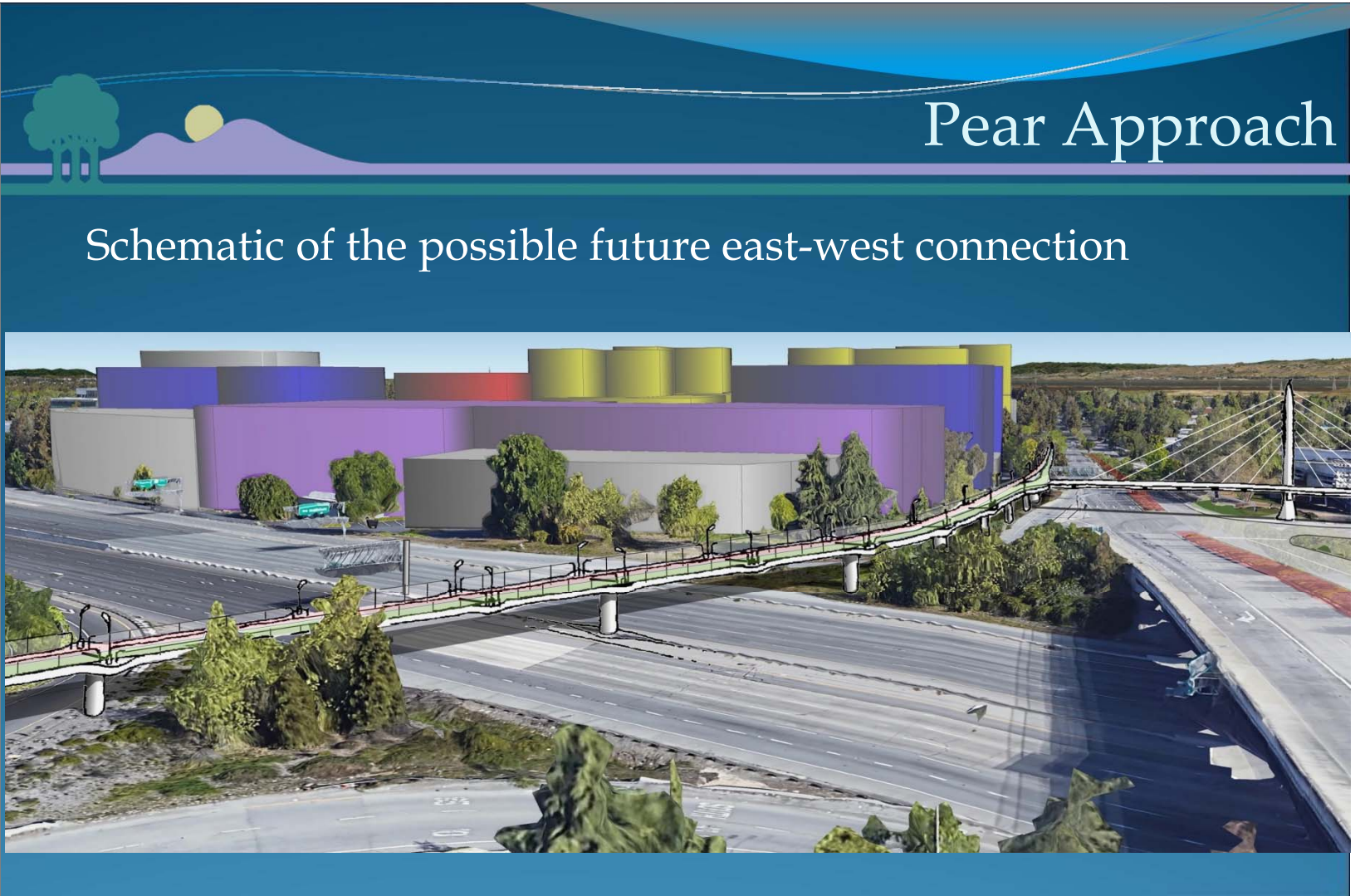


Pear Approach

Schematic of the possible future east-west connection

Overview

- A. Project Background
- B. Design Parameters
- C. Goals & Council Questions
- D. Bridge Components**
 - Terra Bella Approach
 - Shoreline Crossing
 - **Pear Avenue Approach**
- E. Project Budget
- F. Next Steps
- G. Summary of Council Questions



Overview

- A. Project Background
- B. Design Parameters
- C. Goals & Council Questions
- D. Bridge Components**
 - Terra Bella Approach
 - **Shoreline Crossing**
- E. Project Budget
- F. Next Steps
- G. Council Questions

Council Question #3

Does the City Council support the recommended design considerations such as the skylight option and a wider deck area to facilitate travels on the proposed and future bridges within the Pear Avenue Approach?

Project Budget

Overview

- A. Project Background
- B. Design Parameters
- C. Goals & Council Questions
- D. Bridge Components
- E. Project Budget**
- F. Next Steps
- G. Summary Council Questions

Project Stage	Overall Budget
Design	\$ 2 million
Construction	\$20 million



Next Steps

Overview

- A. Project Background
- B. Design Parameters
- C. Goals & Council Questions
- D. Bridge Components
- E. Project Budget
- F. Next Steps**
- G. Summary of Council Questions

- Continue with the project design and develop alternatives
- Coordinate with B/PAC and Visual Arts Committee-begin the Call for Artists process
- Continue coordination with the Gateway Master Plan & Caltrans
- Present the concept design alternatives to City Council for direction in early 2021

Overview

- A. Project Background
- B. Design Parameters
- C. Goals & Council Questions
- D. Bridge Components
- E. Project Budget
- F. Next Steps
- G. Summary Council Questions**

Summary of Council Questions

1. Support of the recommended concept of the two-way off-street cycle track and sidewalk, including installation of street trees, landscape, and streetlights along the west side of Shoreline Boulevard within the Terra Bella Approach?
2. Support of the recommended standard bridge structure design (concrete box girder) for the proposed Bridge with optional enhancements to be reviewed by the City Council in a future meeting?
3. Support of the recommended design considerations such as the skylight option and a wider deck area to facilitate travels on the proposed and future bridges within the Pear Avenue Approach?