

CITY OF MOUNTAIN VIEW  
RESOLUTION NO.  
SERIES 2022

A RESOLUTION OF INTENTION OF THE CITY COUNCIL OF THE CITY OF MOUNTAIN VIEW  
TO VACATE STREET RIGHT-OF-WAY AND PUBLIC EASEMENTS WITHIN THE MIDDLEFIELD PARK  
MASTER PLAN ON A 40-ACRE SITE LOCATED AT THE NORTHEAST CORNER OF  
ELLIS STREET AND EAST MIDDLEFIELD ROAD AND NORTH OF MAUDE AVENUE  
BETWEEN LOGUE AND CLYDE AVENUES

BE IT RESOLVED by the City Council of the City of Mountain View as follows:

1. That, pursuant to and in accordance with the provisions of Part 3 of Division 9 (Sections 8300 through 8374) of the Streets and Highways Code of the State of California (the Public Streets, Highways, and Service Easements Vacation Law), the City Council does hereby declare Council's intention to vacate street right-of-way and public easements within the 40-acre Middlefield Park Master Plan Area generally located at the northeast corner of Ellis Street and East Middlefield Road and north of Maude Avenue between Logue and Clyde Avenues in the City of Mountain View. A description of the street and easements proposed to be vacated and an exhibit showing the areas to be vacated, a copy of which is on file in the City Clerk's Office of the City of Mountain View, are also attached hereto as Exhibits A and B and incorporated herein by reference.

2. That notice is hereby given that at the hour of 6:30 p.m., or as soon thereafter as the matter can be heard, on Tuesday, November 15, 2022, a public hearing will be held by the City Council, in accordance with California Government Code Section 54953(e) as authorized by City Council resolution (available upon request to [city.clerk@mountainview.gov](mailto:city.clerk@mountainview.gov)), by video conference and/or in-person at the City Council Chambers (500 Castro Street, Second Floor, Mountain View, California, 94041), at which time and place all persons interested in or objecting to the proposed vacation may appear and be heard. Participation by video conference will be through the Zoom Webinar by visiting [mountainview.gov/meeting](https://mountainview.gov/meeting) and entering Webinar ID: 843 5126 7142, or as otherwise provided on the posted City Council Agenda. Given the unpredictable nature of the COVID-19 pandemic, in-person attendance may not be available; the public is advised to review the posted City Council meeting agenda to confirm whether this option is available.

3. That the City Clerk is hereby directed to publish this Resolution at least 14 days prior to said hearing, pursuant to Section 8322 of the Streets and Highways Code of the State of California.

4. That copies of this Resolution, serving as notice of vacation, shall be conspicuously posted by the Public Works Director along the line of the aforesaid street right-of-way and public

easements proposed to be vacated at least 14 days before the date set for hearing; the notices shall be posted not more than 300' apart, but at least three of said notices to be posted along the line of said public easements proposed to be vacated, pursuant to Section 8323 of the Streets and Highways Code of the State of California.

-----

LL/4/RESO  
979-10-25-22r

- Exhibits: A. Table of Street Right-of-Way and Public Easements to Be Vacated  
B. Map of Street Right-of-Way and Public Easements to Be Vacated

Exhibit A. Table of Street Right-of-Way and Public Easements to be Vacated

Easement Number from Map	Easement Title	Document Reference	In Favor of/ For the Purpose of	Project APN(s)
1	5' PUBLIC SERVICE EASEMENT	4704 O.R. 510	<b>CITY OF MOUNTAIN VIEW</b> AN EASEMENT FOR PUBLIC UTILITIES AND INCIDENTAL PURPOSES.	160-58-017 , 160-58-016
3	4' SIDEWALK EASEMENT	INSTRUMENT NO. 13760875	<b>CITY OF MOUNTAIN VIEW</b> AN EASEMENT FOR SIDEWALK EASEMENT AND INCIDENTAL PURPOSES.	160-58-017 , 160-58-016
4	4' SIDEWALK EASEMENT	INSTRUMENT NO. 13760876	<b>CITY OF MOUNTAIN VIEW</b> AN EASEMENT FOR SIDEWALK EASEMENT AND INCIDENTAL PURPOSES.	160-58-017
5	5' STREET UTILITY EASEMENT	INSTRUMENT NO. 13760877	<b>CITY OF MOUNTAIN VIEW</b> AN EASEMENT FOR STREET AND FOR THE PURPOSE OF LAYING, INSTALLING, MAINTAINING, REPAIRING, PROTECTING AND REPLACING SANITARY SEWERS, WATER MAINS, STORM DRAINS, GAS MAINS, POLES, OVERHEAD AND UNDERGROUND ELECTRICAL AND TELEPHONE WIRE, ELECTROLIERS, CABLE TELEVISION, AND OTHER MUNICIPAL USES AND INCIDENTAL PURPOSES.	160-58-017
6A	5' STREET UTILITY EASEMENT	INSTRUMENT NO. 13760878	<b>CITY OF MOUNTAIN VIEW</b> AN EASEMENT FOR STREET AND FOR THE PURPOSE OF LAYING, INSTALLING, MAINTAINING, REPAIRING, PROTECTING AND REPLACING SANITARY SEWERS, WATER MAINS, STORM DRAINS, GAS MAINS, POLES, OVERHEAD AND UNDERGROUND ELECTRICAL AND TELEPHONE WIRE, ELECTROLIERS, CABLE TELEVISION, AND OTHER MUNICIPAL USES AND INCIDENTAL PURPOSES.	160-58-016
8	MAINTENANCE & PEDESTRIAN PATH	INSTRUMENT NO. 13899267	MATTERS CONTAINED IN THAT CERTAIN DOCUMENT ENTITLED "DEFERRED LIGHT RAIL STATION AREA IMPROVEMENT" DATED JUNE 06, 1997, EXECUTED BY AND BETWEEN CITY OF MOUNTAIN VIEW AND MIDDLEFIELD/ELLIS ASSOCIATES, RECORDED FEBRUARY 09, 1998, INSTRUMENT NO 14044593, OF OFFICIAL RECORDS, WHICH DOCUMENT, AMONG OTHER THINGS, CONTAINS OR PROVIDES: TERMS AND CONDITIONS AS CONTAINED THEREIN. GRANT OF EASEMENT EXECUTED BY CITY OF MOUNTAIN VIEW, TO SANTA CLARA COUNTY TRANSIT	160-58-016, 160-58-017
9	SANITARY SEWER AND STORM DRAIN EASEMENT	6058 O.R. 458	<b>CITY OF MOUNTAIN VIEW</b> AN EASEMENT FOR CONSTRUCTION, MAINTENANCE AND OPERATION OF SANITARY SEWER MAINS, STORM DRAIN AND INCIDENTAL PURPOSES.	160-57-008
14A	20' PUBLIC UTILITIES EASEMENT	6805 O.R. 6	<b>CITY OF MOUNTAIN VIEW, A MUNICIPAL CORPORATION</b> AN EASEMENT, WITH RIGHTS OF INGRESS AND EGRESS, FOR THE PRUPOSE OF LAYING, INSTALLING, MAINTAINING, REPAIRING, PROTECTING AND REPLACING SANITARY SEWERS, WATER MAINS, STORM DRAINS, GAS MAINS, POLES, OVERHEAD AND UNDERGROUND ELECTRICAL AND TELEPHONE WIRES, ELECTROLIERS, AND OTHER UTILITY AND MUNICIPAL PURPOSES.	160-57-009, 160-57-012
14B	5' WIRE CLEARANCE EASEMENT	6805 O.R. 6	<b>CITY OF MOUNTAIN VIEW, A MUNICIPAL CORPORATION</b> A PERPETUAL EASEMENT FOR WIRE CLEARANCE PURPOSES ONLY.	160-57-009, 160-57-012
17	10' PUBLIC UTILITY EASEMENT	7342 O.R. 118	<b>CITY OF MOUNTAIN VIEW</b> AN EASEMENT FOR ALL UTILITY AND MUNICIPAL PURPOSES AND INCIDENTAL PURPOSES.	160-57-009
18	5' WIRE CLEARANCE EASEMENT	7342 O.R. 118	<b>CITY OF MOUNTAIN VIEW</b> AN EASEMENT FOR ALL UTILITY AND MUNICIPAL PURPOSES AND INCIDENTAL PURPOSES.	160-57-009
25	PUBLIC UTILITY EASEMENT	121 MAPS 40; INSTRUMENT NO. 13702085	<b>CITY OF MOUNTAIN VIEW</b> AN EASEMENT SHOWN OR DEDICATED ON THE MAP OF TRACT NO. 2724 (121 MAPS 40) FOR PUBLIC UTILITIES.	160-58-017 , 160-58-016

26	WIRE CLEARANCE EASEMENT	121 MAPS 40; INSTRUMENT NO. 13702085	<b>CITY OF MOUNTAIN VIEW</b> AN EASEMENT SHOWN OR DEDICATED ON THE MAP OF TRACT NO. 2724 (121 MAPS 40) FOR WIRE CLEARANCE.	160-58-017 , 160-58-016
27	ANCHOR EASEMENT	121 MAPS 40	<b>CITY OF MOUNTAIN VIEW</b> AN EASEMENT SHOWN OR DEDICATED ON THE MAP OF PARCEL MAP FOR ANCHOR AND INCIDENTAL PURPOSES.	160-58-017
28	PUBLIC UTILITY EASEMENT	138 MAPS 24	<b>CITY OF MOUNTAIN VIEW</b> AN EASEMENT SHOWN OR DEDICATED ON THE MAP OF TRACT NO. 2917 (138 MAPS 24) FOR PUBLIC UTILITIES. FOR PUBLIC UTILITY, WIRE CLEARANCE, AND INCIDENTAL PURPOSES	160-57-004,160-57-006, 160-57-007, 160-57-009, 160-57-013, 160-58-001
29	WIRE CLEARANCE EASEMENT	138 MAPS 24	<b>CITY OF MOUNTAIN VIEW</b> AN EASEMENT SHOWN OR DEDICATED ON THE MAP OF TRACT NO. 2917 (138 MAPS 24) FOR WIRE CLEARANCE. FOR PUBLIC UTILITY, WIRE CLEARANCE, AND INCIDENTAL PURPOSES	160-57-004,160-57-006, 160-57-007, 160-57-009, 160-57-013, 160-58-001
30	PUBLIC UTILITY EASEMENT	189 MAPS 32	<b>CITY OF MOUNTAIN VIEW</b> AN EASEMENT SHOWN OR DEDICATED ON THE MAP OF TRACT NO. 3813 (189 MAPS 32) FOR PUBLIC UTILITIES. FOR PUBLIC UTILITY, WIRE CLEARANCE, AND INCIDENTAL PURPOSES	160-57-009, 160-57-010, 160-57-011
31	WIRE CLEARANCE EASEMENT	189 MAPS 32	<b>CITY OF MOUNTAIN VIEW</b> AN EASEMENT SHOWN OR DEDICATED ON THE MAP OF TRACT NO. 3813 (189 MAPS 32) FOR WIRE CLEARANCE. FOR PUBLIC UTILITY, WIRE CLEARANCE, AND INCIDENTAL PURPOSES	160-57-009, 160-57-010, 160-57-011
39	PUBLIC UTILITY EASEMENT	524 MAP 27	<b>CITY OF MOUNTAIN VIEW</b> AN EASEMENT SHOWN ON THE MAP OF PARCEL MAP FOR PUBLIC SERVICE AND INCIDENTAL PURPOSES. (524 MAP 27). FOR PUBLIC SERVICE AND INCIDENTAL PURPOSES.	160-57-013
43	10' POLE AND WIRE EASEMENT	F858 O.R. 342	<b>CITY OF MOUNTAIN VIEW</b> AN EASEMENT FOR UTILITIES AND INCIDENTAL PURPOSES.	160-59-006
44	5' WIRE CLEARANCE EASEMENT	F858 O.R. 347	<b>CITY OF MOUNTAIN VIEW</b> AN EASEMENT FOR WIRE CLEARANCE AND INCIDENTAL PURPOSES.	160-59-006
46	5' PUBLIC UTILITY EASEMENT	4769 O.R. 501; 4922 O.R. 461	<b>CITY OF MOUNTAIN VIEW</b> AN EASEMENT FOR PUBLIC UTILITIES AND WIRE CLEARANCES AND INCIDENTAL PURPOSES.	160-59-005
N/A	Logue Avenue Cul-de-sac (in fee)	8869 Page 205	<b>CITY OF MOUNTAIN VIEW</b> GRANT DEED (FEE SIMPLE) FOR STREET.	Logue Avenue

**ABBREVIATIONS**

SYMBOL	DESCRIPTION
APN	ACCESSOR'S PARCEL NUMBER
DCDA	DOUBLE CHECK DETECTOR ASSEMBLY
DN	DOCUMENT NUMBER
DSE	DISTRICT SYSTEMS EASEMENT
E	EAST
EG	EXISTING GROUND
ESMT	EASEMENT
EVAE	EMERGENCY VEHICLE ACCESS EASEMENT
EWPP	EAST WHISMAN PRECISE PLAN
EX	EXISTING
EXFC	EXISTING FACE OF CURB
FC	FACE OF CURB
FDC	FIRE DEPARTMENT CONNECTION
FF	FINISH FLOOR
FG	FINISH GRADE
FW	FIRE WATER
HP	HIGH POINT
L	LENGTH
LG	LIP OF GUTTER
LP	LOW POINT
LS	LANDSCAPE
N	NORTH
NTS	NOT TO SCALE
OH	OVER HEAD POLE/ELECTRICAL
PG&E	PACIFIC GAS & ELECTRIC
PIV	POST INDICATOR VALVE
PL	PROPERTY LINE
POPA	PRIVATELY-OWNED, PUBLICLY-ACCESSIBLE
PR	PROPOSED
PRFC	PROPOSED FACE OF CURB
PUC	PUBLIC UTILITY COMMISSION
PUE, P.U.E.	PUBLIC UTILITY EASEMENT
R	RADIUS
RIM	RIM ELEVATION
ROW	RIGHT OF WAY
RW	RECYCLED WATER
S	SOUTH
SD	STORM DRAIN
S.E.	STREET EASEMENT
SDCB	STORM DRAIN CATCH BASIN
SDMH	STORM DRAIN MANHOLE
SS	SANITARY SEWER
SSMH	SANITARY SEWER MANHOLE
ST	STEEL
SW	SIDEWALK
TC	TOP OF CURB
TG	TOP OF GRATE
VTA	VALLEY TRANSPORTATION AUTHORITY
W	WATER/WEST
W.C.E.	WIRE CLEARANCE EASEMENT

**LEGEND**

	EXISTING	PROPOSED
BOUNDARY LINE		
EASEMENT LINE		
CENTER LINE		
STORM DRAIN SUBDRAIN		
STORM DRAIN		
STORMWATER FORCE		
DOMESTIC WATER		
FIRE SERVICE (BUSINESS AS USUAL/TYPICAL IMPROVEMENT STANDARDS)		
FUTURE RECYCLED WATER		
RECYCLED WATER		
RECYCLED WATER LINE (BY OTHERS)		
SANITARY SEWER		
FIBER OPTIC		
ELECTRICAL		
GAS		
JOINT TRENCH		
TELEPHONE		
OVERHEAD		
LIMIT OF WORK		
STORM DRAIN MANHOLE		
SANITARY SEWER MANHOLE		
AREA DRAIN		
CATCH BASIN		
BACKFLOW PREVENTOR		
DCDA		
WATER METER		
WATER VALVE		
FIRE HYDRANT		
FDC		
PIV		
STORM DRAIN CLEANOUT		
SITE LIGHT		
GUY ANCHOR		
JOINT POLE		
SANITARY SEWER CLEANOUT		

**EXISTING EASEMENT TABLE**

1	5' PUBLIC SERVICE EASEMENT, 4704 O.R. 510	30	PUBLIC UTILITY EASEMENT, 189 MAPS 32
2	10' PG&E UNDERGROUND UTILITIES, INSTRUMENT NUMBER 13706881	31	WIRE CLEARANCE EASEMENT, 189 MAPS 32
3	4' SIDEWALK EASEMENT, INSTRUMENT NUMBER 13760875	32	NOT USED
4	4' SIDEWALK EASEMENT, INSTRUMENT NUMBER 13760876	33	NOT USED
5	5' STREET UTILITY EASEMENT, INSTRUMENT NUMBER 13760877	34	NOT USED
6	A) 5' STREET STREET EASEMENTS, 4704 O.R. 510	35	NOT USED
6	B) 10' STREET UTILITY EASEMENT INSTRUMENT NUMBER 13760878	36	NOT USED
7	NOT USED, SEE 8	37	NOT USED
8	MAINTENANCE AND PEDESTRIAN PATH, INSTRUMENT NUMBER 13899267	38	NOT USED
9	SANITARY SEWER AND STORM DRAIN EASEMENT, 6058 O.R. 458	39	PUBLIC SERVICE EASEMENT, 524 MAPS 27
10	10' PG&E EASEMENT, 9210 O.R. 645	40	NOT USED
11	10' PG&E EASEMENT, 0233 O.R. 131	41	NOT USED
12	15' PG&E EASEMENT, 1206 O.R. 276	42	NOT USED
13	20' RAILROAD EASEMENT, 6689 O.R. 680	43	10' POLE AND WIRE EASEMENT, F858 O.R. 342
14	A) 20' PUBLIC UTILITIES EASEMENT, 6805 O.R. 6	44	5' WIRE CLEARANCE EASEMENT, F858 O.R. 347
14	B) 5' WIRE CLEARANCE EASEMENT, 6805 O.R. 6	45	NOT USED
15	10' PG&E & PACIFIC TELEPHONE POLE LINE EASEMENT, 6512 O.R. 353	46	5' PUBLIC UTILITY EASEMENT, 4769 O.R. 501 & 4922 O.R. 461
16	NOT USED, SEE 15	47	5' WIRE CLEARANCE EASEMENT, 4922 O.R. 461
17	10' PUBLIC UTILITY EASEMENT, 7342 O.R. 118	48	ABUTTER'S RIGHTS RELINQUISHED, N544 O.R. 2046
18	5' WIRE CLEARANCE EASEMENT, 7342 O.R. 118	49	2'x25' ANCHOR EASEMENT, 4818 O.R. 68 & 4922 O.R. 468
19	10' PG&E EASEMENT, 8304 O.R. 692	50	5' NITROGEN PIPELINE, G906 O.R. 545
20	10' PG&E PUBLIC UTILITY EASEMENT, 9886 O.R. 17		
21	NOT USED		
22	5' NITROGEN PIPELINE, G942 O.R. 76		
23	20' RAILROAD EASEMENT, 7321 O.R. 49		
24	NOT USED		
25	PUBLIC UTILITY EASEMENT, 121 MAPS 40, MODIFIED BY DN. 13702085		
26	5' WIRE CLEARANCE EASEMENT, 121 MAPS 40, MODIFIED BY DN. 13702085		
27	ANCHOR EASEMENT, 121 MAPS 40		
28	PUBLIC UTILITY EASEMENT, 138 MAPS 24		
29	WIRE CLEARANCE EASEMENT, 138 MAPS 24		

DRAWING NAME: \\Bkf-rc\vol14\2020\201347\_East\_Whisman\_MP\ENG\TM\Plotted Sheets\C1.0 - TITLE.dwg  
PLOT DATE: 09-19-22 PLOTTED BY: fel

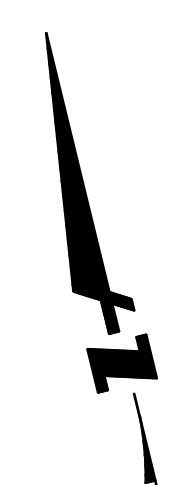
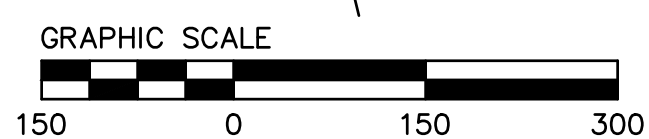
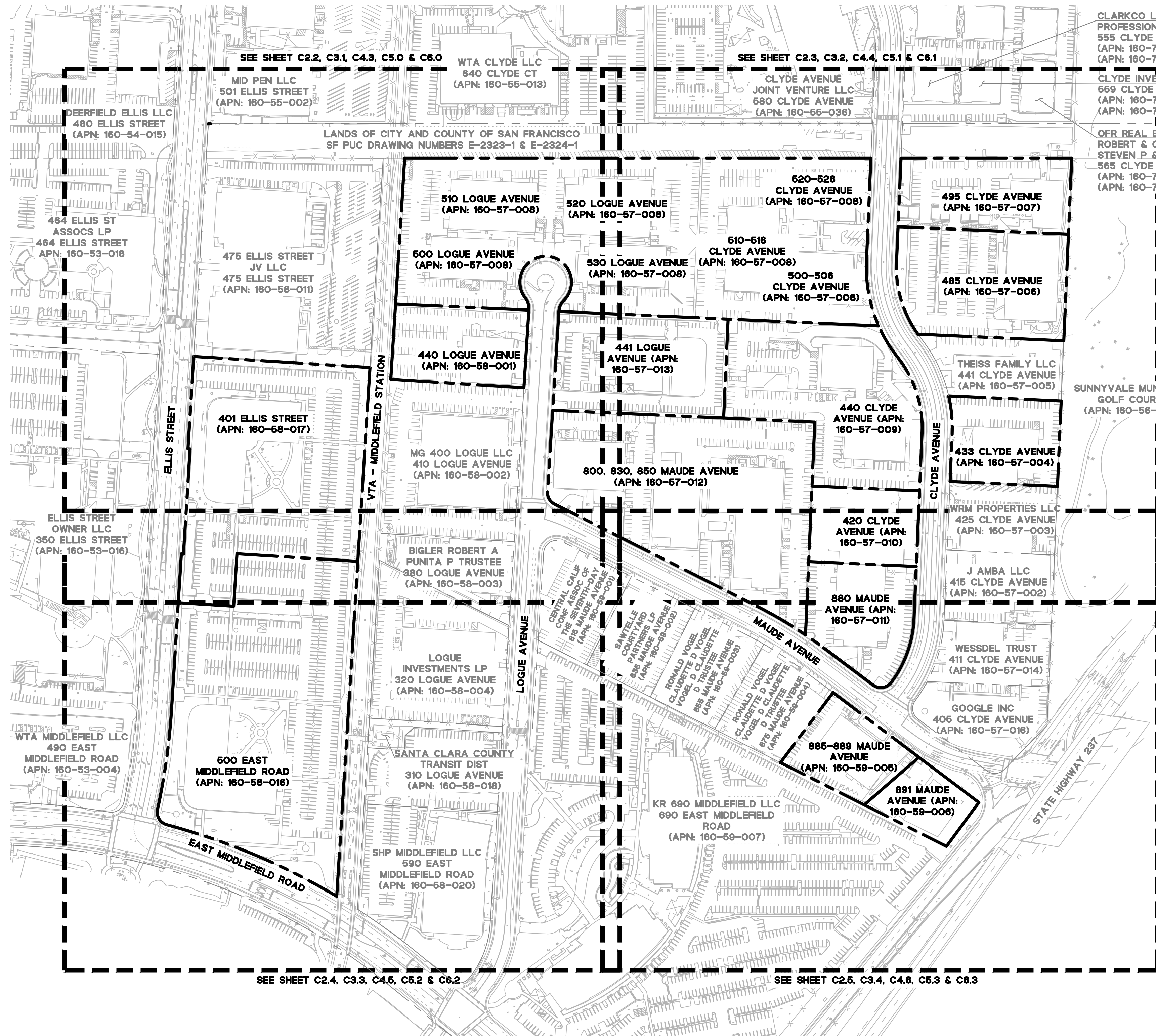


MIDDLEFIELD PARK MASTER PLAN  
VESTING TENTATIVE MAP  
LEGEND AND ABBREVIATIONS  
CITY OF MOUNTAIN VIEW SANTA CLARA COUNTY CALIFORNIA

Date	07/27/2022
Scale	N/A
Design	LB
Drawn	CF/JL
Approved	JD
Job No	20201347
Revisions	
No.	
Sheet Number:	<b>C1.1</b>



DRAWING NAME: \\Bkf-rc\vol4\2020\201347\_East\_Whisman\_MP\ENG\TM\Plotted Sheets\C1.0 - TITLE.dwg  
 PLOT DATE: 09-19-22 PLOTTED BY: fel



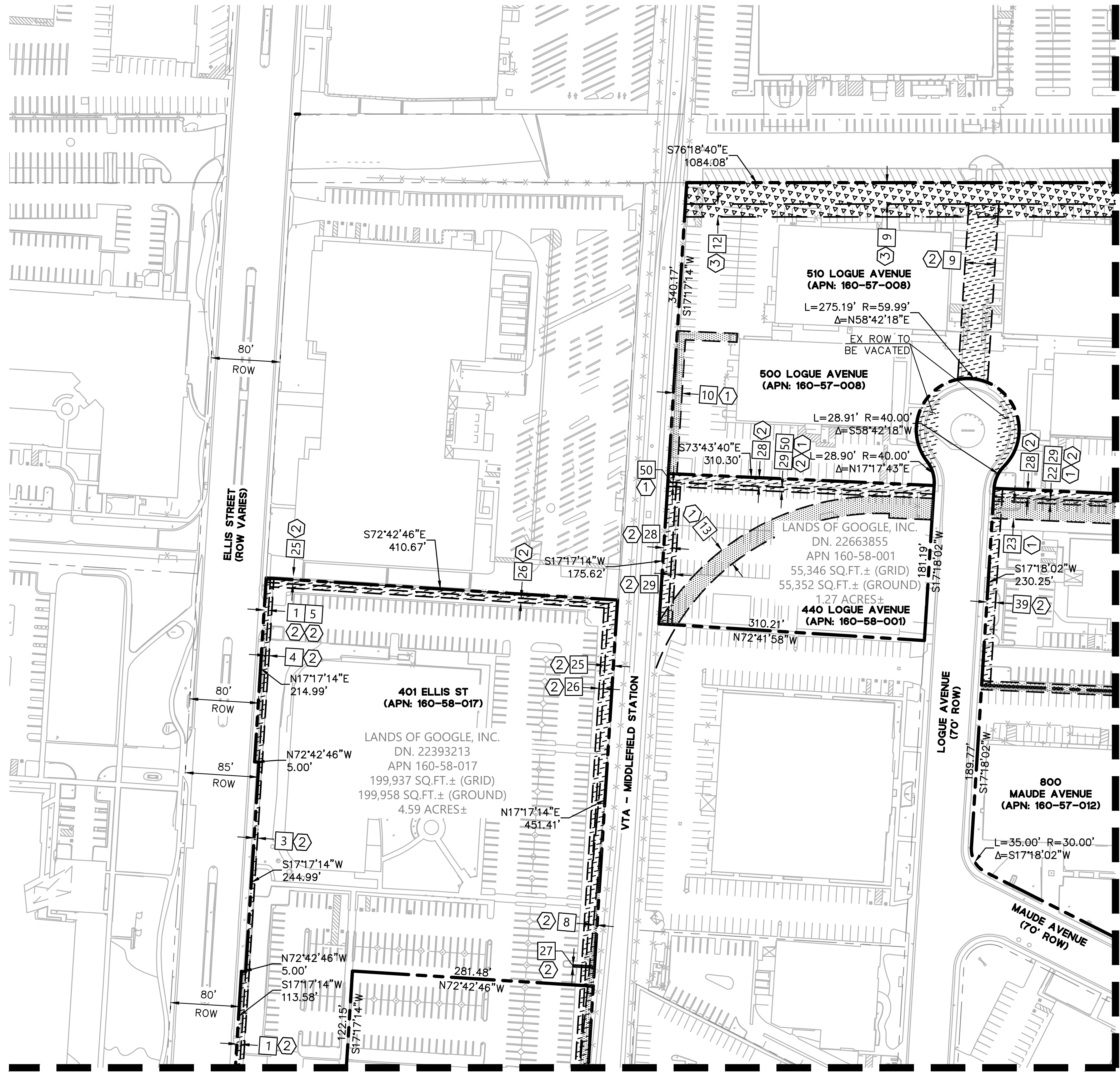
MIDDLEFIELD PARK MASTER PLAN  
 VESTING TENTATIVE MAP  
 EXISTING BOUNDARY KEY MAP

BKF  
 255 SHORELINE DRIVE  
 SUITE 200  
 REDWOOD CITY, CA 94065  
 (650) 482-6300  
 www.bkf.com

Date	07/27/2022
Scale	1"=100'
Design	LB
Drawn	CF/JL
Approved	JD
Job No	20201347
Sheet Number:	<b>C2.1</b>

CITY OF MOUNTAIN VIEW SANTA CLARA COUNTY CALIFORNIA

DRAWING NAME: \\Bkf-rc\vol14\2020\201347\_East\_Whisman\_MP\ENG\TM\Plotted\_Sheets\C2.0 - EXEASE.dwg  
 PLOT DATE: 09-19-22 PLOTTED BY: fel



SEE SHEET C2.4 FOR CONTINUATION

SEE SHEET C2.3 FOR CONTINUATION



- NOTES:**
- SEE SHEET C1.1 FOR INFORMATION ON EASEMENT KEYNOTES.
  - PUBLIC EASEMENTS OR RIGHT-OF-WAY SHOWN TO BE VACATED SHALL FOLLOW THE CITY OF MOUNTAIN VIEW MUNICIPAL CODE EASEMENT VACATION PROCESS AND CALIFORNIA STREETS AND HIGHWAY CODE.

KEYNOTE	HATCH	DESCRIPTION
①	[Hatched pattern]	EASEMENT TO BE ABANDONED BY SEPARATE INSTRUMENT.
②	[Hatched pattern]	EASEMENT OR RIGHT-OF-WAY TO BE VACATED PER CALIFORNIA STREETS AND HIGHWAYS CODE.
③	[Hatched pattern]	EASEMENT WITHIN PROPOSED PARCELS TO REMAIN

**MIDDLEFIELD PARK MASTER PLAN  
 VESTING TENTATIVE MAP  
 EXISTING BOUNDARY & EASEMENTS**



Date	Revisions
07/27/2022	
09-19-22	

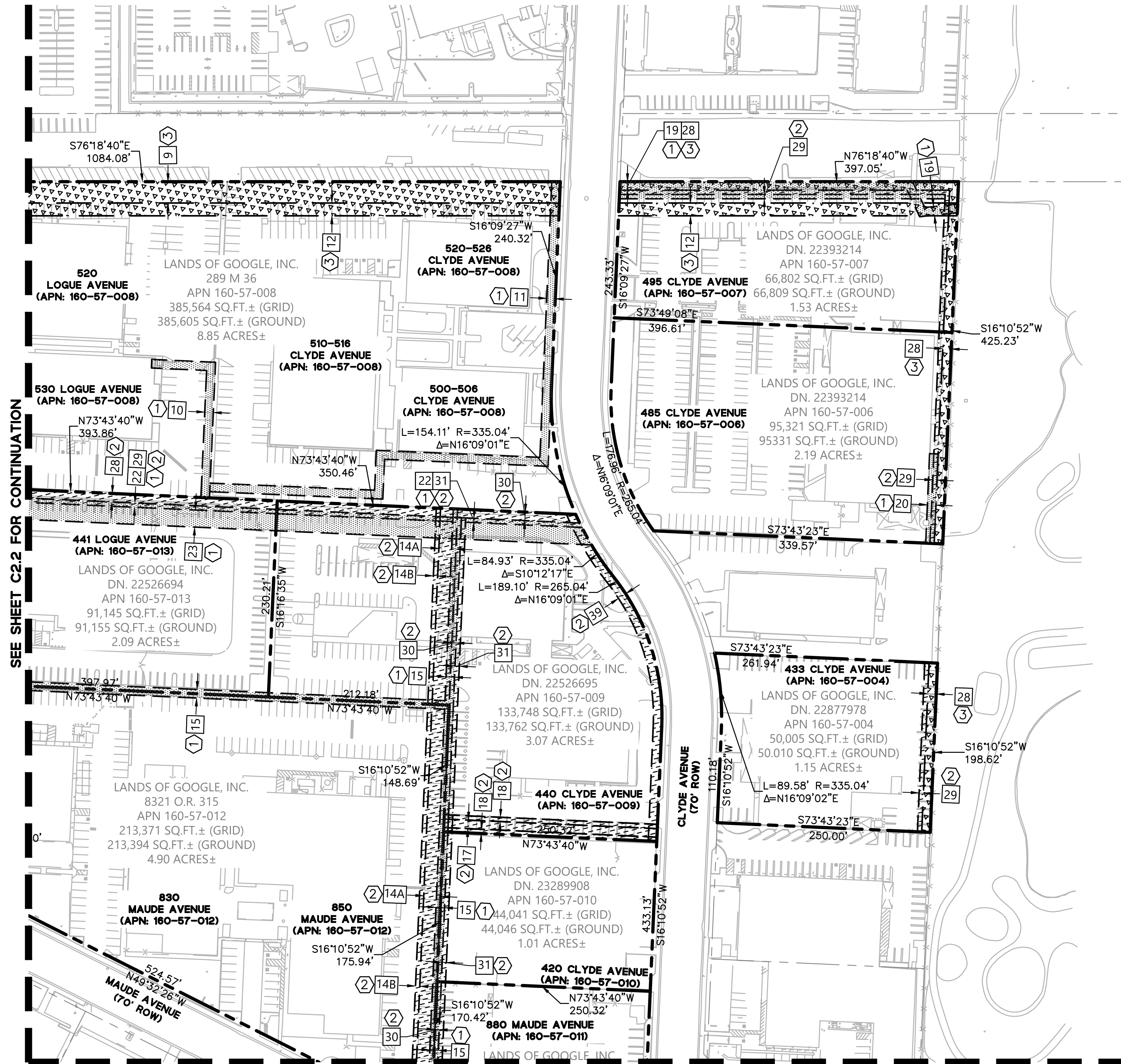
Scale 1"=60'  
 Design LB  
 Drawn CF/JL  
 Approved JD  
 Job No 20201347

Sheet Number:  
**C2.2**

CITY OF MOUNTAIN VIEW SANTA CLARA COUNTY CALIFORNIA



DRAWING NAME: \\Bkf-rc\vol14\2020\201347\_East\_Whisman\_MP\ENG\TM\Plotted Sheets\C2.0 - EXEASE.dwg  
 PLOT DATE: 09-19-22 PLOTTED BY: fell



SEE SHEET C2.2 FOR CONTINUATION

SEE SHEET C2.5 FOR CONTINUATION



- NOTES:**
- SEE SHEET C1.1 FOR INFORMATION ON EASEMENT KEYNOTES.
  - PUBLIC EASEMENTS OR RIGHT-OF-WAY SHOWN TO BE VACATED SHALL FOLLOW THE CITY OF MOUNTAIN VIEW MUNICIPAL CODE EASEMENT VACATION PROCESS AND CALIFORNIA STREETS AND HIGHWAY CODE.

KEYNOTE	HATCH	DESCRIPTION
①	[Hatch Pattern]	EASEMENT TO BE ABANDONED BY SEPARATE INSTRUMENT.
②	[Hatch Pattern]	EASEMENT OR RIGHT-OF-WAY TO BE VACATED PER CALIFORNIA STREETS AND HIGHWAYS CODE.
③	[Hatch Pattern]	EASEMENT WITHIN PROPOSED PARCELS TO REMAIN



**MIDDLEFIELD PARK MASTER PLAN**  
**VESTING TENTATIVE MAP**  
**EXISTING BOUNDARY & EASEMENTS**  
 CITY OF MOUNTAIN VIEW SANTA CLARA COUNTY CALIFORNIA

Revisions	No.	Date
		07/27/2022

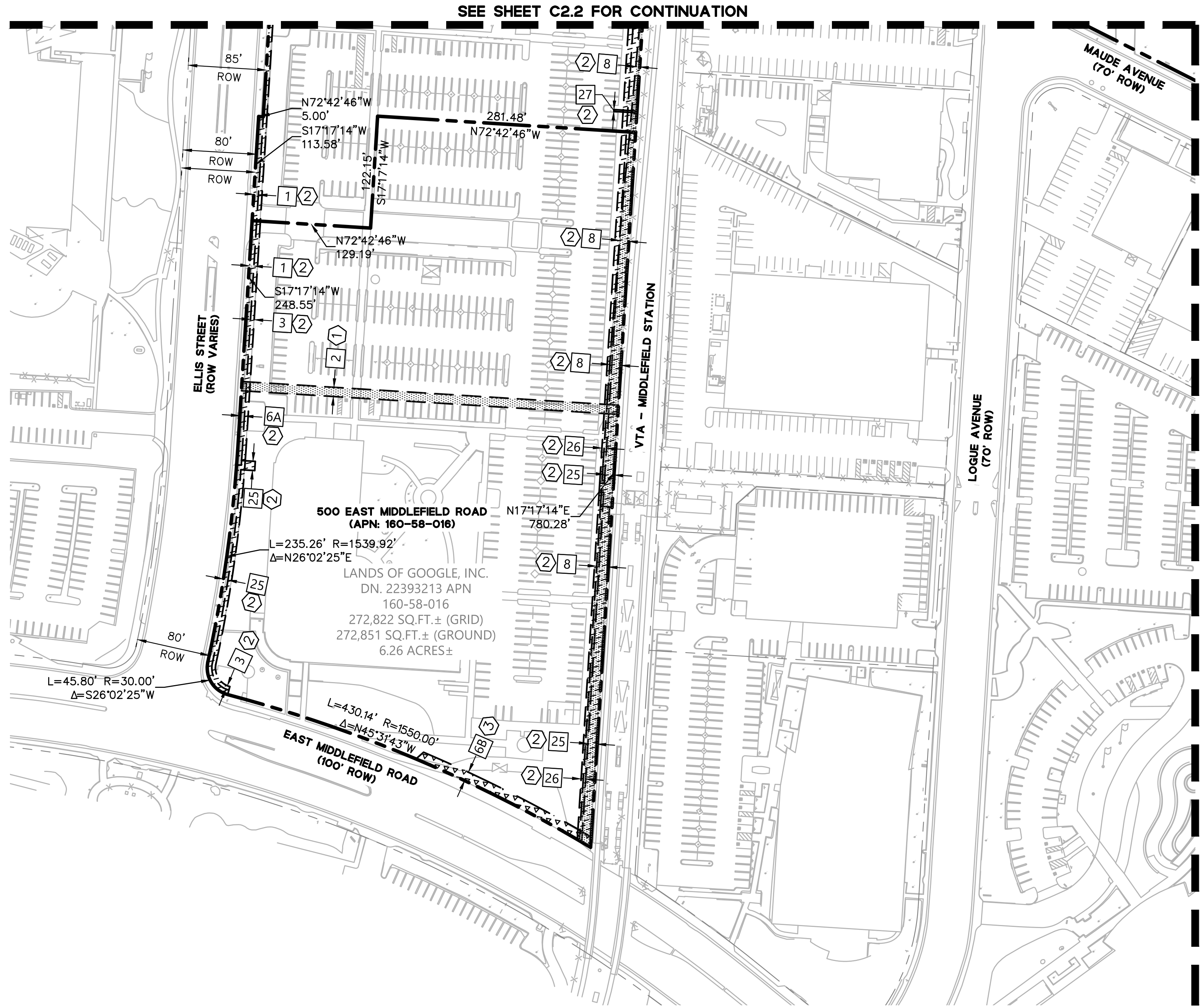
Scale 1"=60'

Design LB  
 Drawn CF/JL  
 Approved JD

Job No 20201347

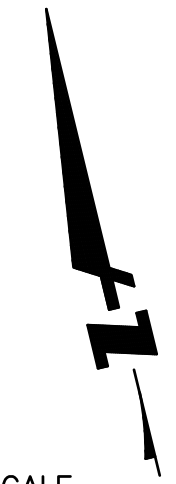
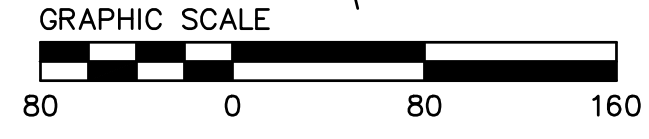
Sheet Number:  
**C2.3**

DRAWING NAME: \\Bkf-rc\vol14\2020\201347\_East\_Whisman\_MP\ENG\TM\Plotted Sheets\C2.0 - EXEASE.dwg  
 PLOT DATE: 09-19-22 PLOTTED BY: fel



SEE SHEET C2.2 FOR CONTINUATION

SEE SHEET C2.5 FOR CONTINUATION



- NOTES:**
- SEE SHEET C1.1 FOR INFORMATION ON EASEMENT KEYNOTES.
  - PUBLIC EASEMENTS OR RIGHT-OF-WAY SHOWN TO BE VACATED SHALL FOLLOW THE CITY OF MOUNTAIN VIEW MUNICIPAL CODE EASEMENT VACATION PROCESS AND CALIFORNIA STREETS AND HIGHWAY CODE.

KEYNOTE	HATCH	DESCRIPTION
①	[Dotted Hatch]	EASEMENT TO BE ABANDONED BY SEPARATE INSTRUMENT.
②	[Diagonal Line Hatch]	EASEMENT OR RIGHT-OF-WAY TO BE VACATED PER CALIFORNIA STREETS AND HIGHWAYS CODE.
③	[Triangle Hatch]	EASEMENT WITHIN PROPOSED PARCELS TO REMAIN

**MIDDLEFIELD PARK MASTER PLAN  
 VESTING TENTATIVE MAP  
 EXISTING BOUNDARY & EASEMENTS**

CITY OF MOUNTAIN VIEW SANTA CLARA COUNTY CALIFORNIA

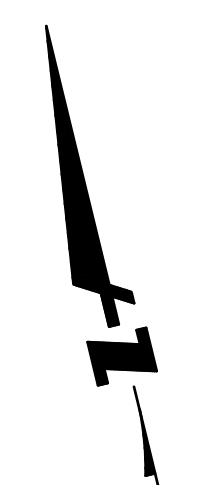
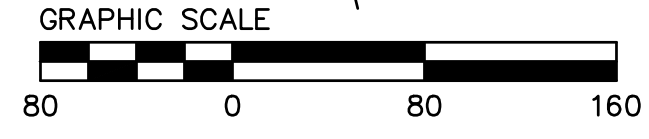
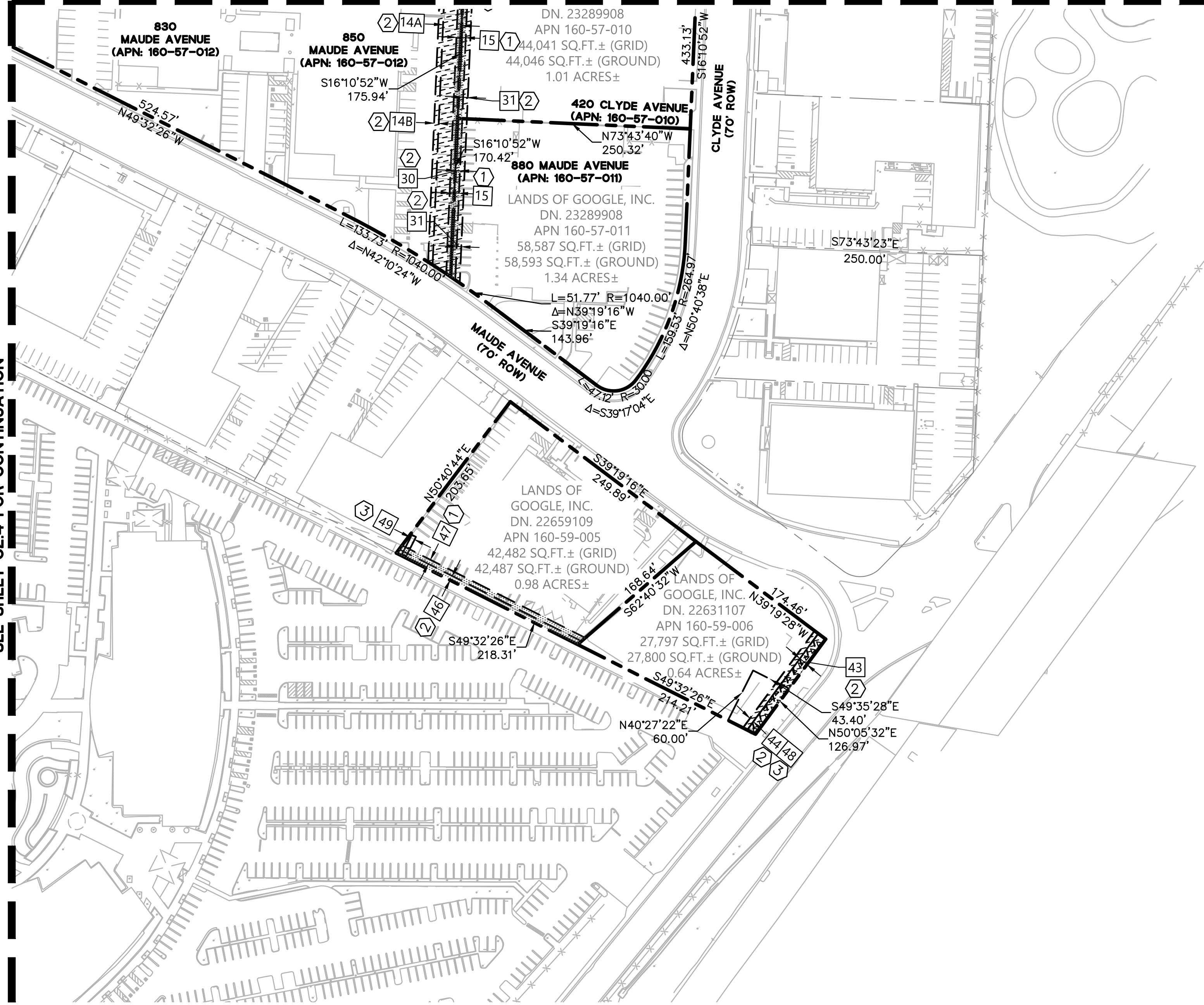
255 SHORELINE DRIVE  
 SUITE 200  
 REDWOOD CITY, CA 94065  
 (650) 482-6300  
 www.bkf.com

Date	07/27/2022
Scale	1"=60'
Design	LB
Drawn	CF/JL
Approved	JD
Job No	20201347
Revisions	
No.	
Sheet Number:	<b>C2.4</b>

DRAWING NAME: \\Bkf-rc\vol14\2020\201347\_East\_Whisman\_MP\ENG\TM\Plotted Sheets\C2.0 - EXEASE.dwg  
 PLOT DATE: 09-19-22 PLOTTED BY: fel

SEE SHEET C2.4 FOR CONTINUATION

SEE SHEET C2.3 FOR CONTINUATION



- NOTES:**
- SEE SHEET C1.1 FOR INFORMATION ON EASEMENT KEYNOTES.
  - PUBLIC EASEMENTS OR RIGHT-OF-WAY SHOWN TO BE VACATED SHALL FOLLOW THE CITY OF MOUNTAIN VIEW MUNICIPAL CODE EASEMENT VACATION PROCESS AND CALIFORNIA STREETS AND HIGHWAY CODE.

KEYNOTE	HATCH	DESCRIPTION
①	[Hatch pattern]	EASEMENT TO BE ABANDONED BY SEPARATE INSTRUMENT.
②	[Hatch pattern]	EASEMENT OR RIGHT-OF-WAY TO BE VACATED PER CALIFORNIA STREETS AND HIGHWAYS CODE.
③	[Hatch pattern]	EASEMENT WITHIN PROPOSED PARCELS TO REMAIN

MIDDLEFIELD PARK MASTER PLAN  
 VESTING TENTATIVE MAP  
 EXISTING BOUNDARY & EASEMENTS

CITY OF MOUNTAIN VIEW SANTA CLARA COUNTY CALIFORNIA

**BKF**

255 SHORELINE DRIVE  
 SUITE 200  
 REDWOOD CITY, CA 94065  
 (650) 482-6300  
 www.bkf.com

Date	07/27/2022
Scale	1"=60'
Design	LB
Drawn	CF/JL
Approved	JD
Job No	20201347
Revisions	
No.	
Sheet Number:	<b>C2.5</b>