

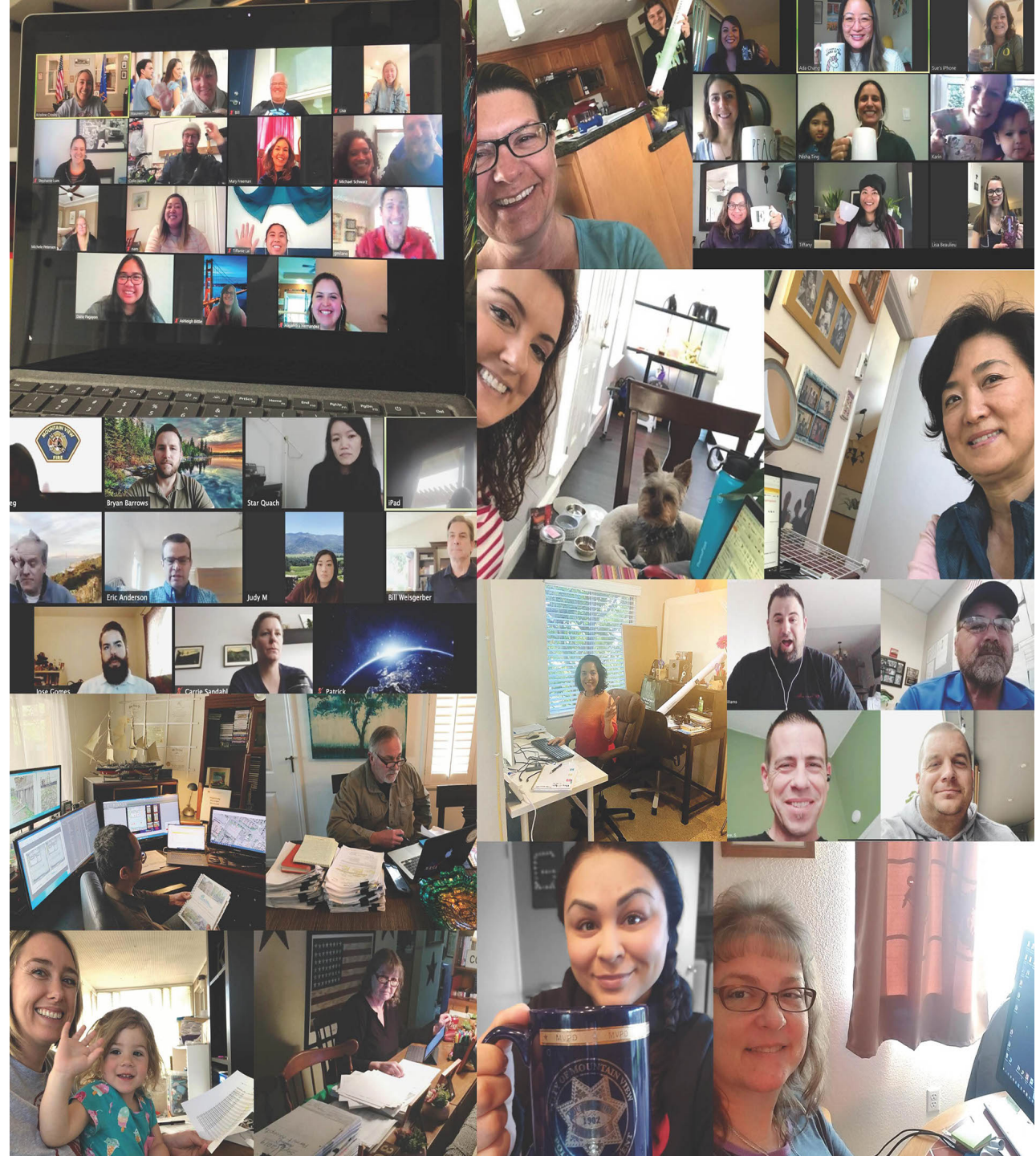
An aerial, grayscale photograph of a large, multi-story building with a prominent dome and a tower. The building is surrounded by trees and other structures. The text is overlaid on the image.

COVID-19 UPDATE

#Together **MV**

CITY COUNCIL MEETING | SEPTEMBER 22, 2020

*Thank you
City staff!*





County and City COVID-19 Numbers

Santa Clara County COVID-19 Snapshot

Last updated on September 21, 2020

COVID-19 Cases		COVID-19 Deaths		COVID-19 Hospitalizations	
Cumulative	New	Cumulative	New	Current	New
20511	109	297	1	109	11

City of Mountain View COVID-19 Numbers

Date	City	Cumulative Positives	population	rate (per 100k)	Δ previous day	Avg pos/Day
September 21	MOUNTAIN VIEW	553	80,993	683	2	7.392857143



California COVID-19 By The Numbers

September 21, 2020 | Numbers as of September 20, 2020

CALIFORNIA COVID-19 SPREAD

781,694 (+3,294)

CASES

Ages of Confirmed Cases

- 0-17: **80,508**
- 18-49: **468,969**
- 50-64: **147,624**
- 65+: **83,683**
- Unknown/Missing: **910**

Gender of Confirmed Cases

- Female: **394,632**
- Male: **380,480**
- Unknown/Missing: **6,582**

15,018 (+31)

Fatalities

Hospitalizations

Confirmed COVID-19
2,573/811
Hospitalized/in ICU

Suspected COVID-19
886/149
Hospitalized/in ICU

For county-level
hospital data:
bit.ly/hospitalsca

Your actions **save lives.**

For county-level data:
data.chhs.ca.gov
covid19.ca.gov





COVID-19 Testing

- Over **6,140 tests provided** at City facilities since July 20
- Santa Clara County tied for 2nd highest testing rate in the State
- www.sccfreetest.org
- Ongoing, Drive-up at Shoreline Athletic Fields
 - Tue – Thu 8a – 12:30p
- Ongoing, appointments only at El Camino Hospital
 - Mon-Fri 7:30a – 7p
- Next testing opportunities at MV Center for Performing Arts (appointments)
 - Wed, Sep 23: 8:30a – 4:20p
 - Tue, Oct 6: 9:30a – 4p
 - Tue, Oct 20: 9:30a – 4p





Latest County Public Health Orders

Healthcare providers **MUST** test

- ✓ Anyone who has symptoms
- ✓ Anyone referred by the County to get tested
- ✓ Essential Workers (monthly)
 - ➔ which includes anyone who frequently works with the public in a space where it is not possible to always stay 6 feet or more away from others
- ✓ Anyone who thinks that they may have been exposed to someone who is positive for COVID-19
 - ➔ no proof of contact is required

Healthcare providers:

- ✗ CANNOT challenge your eligibility
- ✗ CANNOT delay testing you.
- ✗ CANNOT take more than 3 days to get your results back to you
- ✗ CANNOT charge you directly for COVID-19 testing

**Starting
September 23, 2020
Report any problems to
SCCocovidconcerns.org**



**Get a Free Flu Shot
at the Fairgrounds
Every Saturday
9 a.m. - 4 p.m.**

**Flu Shots Now
Available**

PLAY SAFE & WEAR A MASK

Playgrounds may not be cleaned or sanitized regularly



Wash hands with soap and water before and after playing (or using the playground) or use hand sanitizer



Don't share toys or equipment with other kids outside your family

Avoid crowded playgrounds and help your children keep their distance

Adults should keep 6 feet apart

6ft



Please do your part and follow all above rules to ensure that we can keep the playground open. City reserves the right to close the playground at any time.

For more information please visit: www.MountainView.gov/parks

Phased Playgrounds Reopening Plan

- Cleaning playground equipment
- New signage at all parks
- First parks to start reopening next week on September 28
- All City parks expected to be open by October 1



California Wildfires





Rent Relief Program Update

	9/9/2020	9/16/2020	Weekly Change
Inquiries	2312	2323	11
Contacted or Attempted Contact	2305	2315	10
Total Inquiries In Process	298	314	16
Did Not Qualify for City of Mountain View Program (referred to other CSA program or other agency if possible)	183	183	0
Non-Responsive (No applicant response from three CSA contacts)	1026	1025	-1
Not Yet Contacted by Case Manager (recent inquiry)	7	8	1
Total Households Served First Month	941	950	9
Checks Cut	846	908	62
Approved Awaiting Check	95	42	-53
Total Households Served Second Month	559	573	14
Checks Cut	378	492	114
Approved Awaiting Check	181	81	-100
Total Checks Cut	1,224	1,400	176
Total Expended	\$2,800,943	\$2,894,990	\$ 94,046.33
Average Assistance	\$2,288.35	\$2,067.85	

Mountain View Safe Parking Program

as of September 4, 2020



59

Average WEEKLY number of VEHICLES service in Safe Parking



132

Average WEEKLY number of PEOPLE served Safe Parking Lots



Added capacity with new Alta Housing lot opening



Homeless/Unstably Housed Relief

- Shoreline 28 vehicles, 64 people
- Evelyn 29 vehicles, 67 people
- Lord's Grace 1 vehicle, 1 person
- Total 59 vehicles, 132 people



Project HomeKey Funding Approved



Your Actions Save Lives

Homekey This Week



- Kashia Band of Pomo Indians: First tribal award
- Riverside County: Seniors, farmworker families, LGBTQ+ youth
- City of Oakland: 2 projects, 163 units
- City of Fresno Housing Authority: Motel conversion
- City of Mountain View: Doubling city shelter beds

- City received \$10M in Project HomeKey funding from State grant
- 124 modular units with private rooms for seniors and families
- First participants expected to move in as early as November



Wear a mask. Slow the spread.



**DEADLINE
SEPT 30**

100

DAYS

**LEFT TO COMPLETE
THE 2020 CENSUS!**



Census self-reporting is extended to **September 30**

We're almost there, Mountain View!
74.9% of our households have been counted so far

Complete your 2020 Census

My2020census.gov or call 844-330-2020