



DATE: March 20, 2018

CATEGORY: Consent

DEPT.: Public Works

TITLE: **Shorebird Way and Charleston Road Recycled Water Extension and Water System Improvements, Project 18-42 – Authorize Design Services**

RECOMMENDATION

Authorize the City Manager to execute a design services agreement with Mott McDonald Consulting Civil Engineers of San Jose in a not-to-exceed amount of \$370,000 to provide design engineering services and prepare construction documents for the Shorebird Way and Charleston Road Recycled Water Extension and Water System Improvements, Project 18-42.

BACKGROUND

The Shorebird Way and Charleston Road recycled water pipeline extension was recommended in the City's 2014 Recycled Water Feasibility Study to supply recycled water to businesses on Charleston Road and Shorebird Way, and provide a connection point for a future extension to serve customers on the east side of Stevens Creek. Although these improvements were part of the original recycled water system construction project, they were removed from the scope of work as a cost-saving measure. The agreement also includes design of a potable water pipeline on Shorebird Way to complete a system loop. The agreement deliverables will include:

- Design of approximately 4,200 lineal feet of 8" and/or 12" recycled water pipeline on Charleston Road and Shorebird Way, east of Shoreline Boulevard. The location of the recycled water pipeline is illustrated in Figure 1 below.

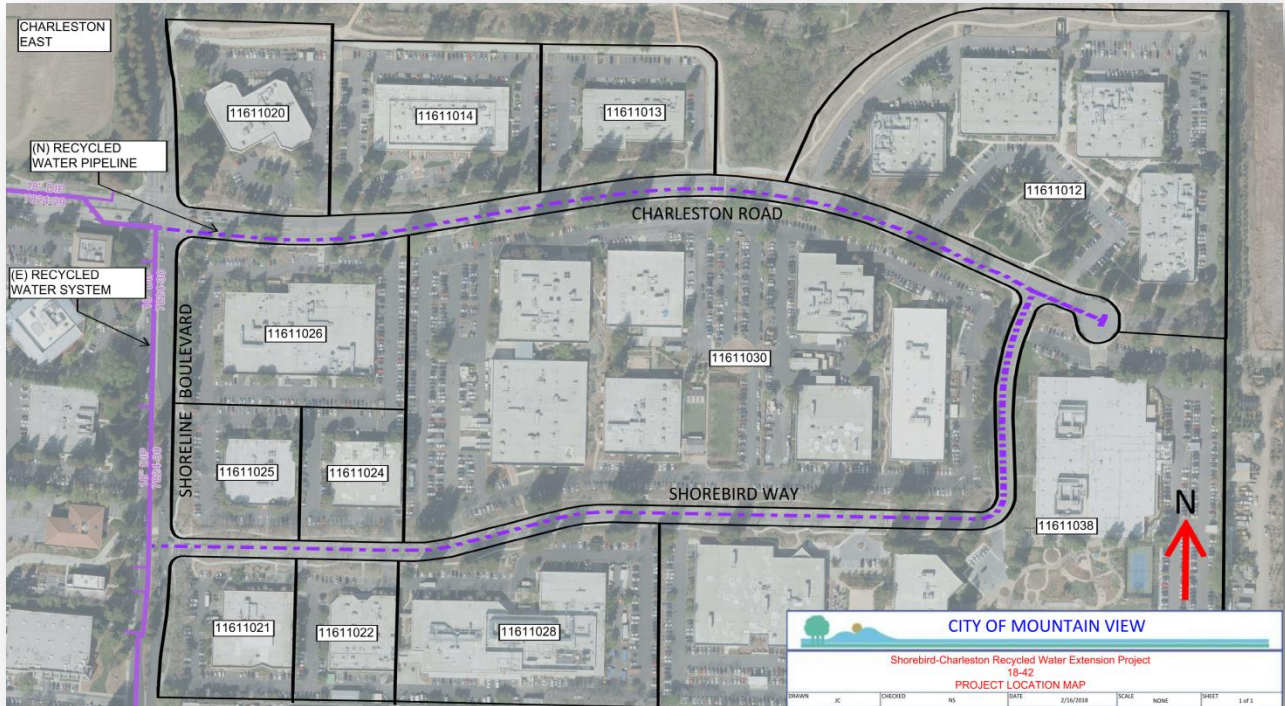


Figure 1

- Design of approximately 770 linear feet of 12" potable water pipeline on Shorebird Way, which will complete a system loop by connecting to the existing water main on Charleston Road.
- Recommended options for abandonment of an 8" Asbestos Concrete Pipe potable water main that is located on a private parcel (currently accessed by an easement).

The location of the water pipeline and pipeline abandonment is illustrated in Figure 2 below:

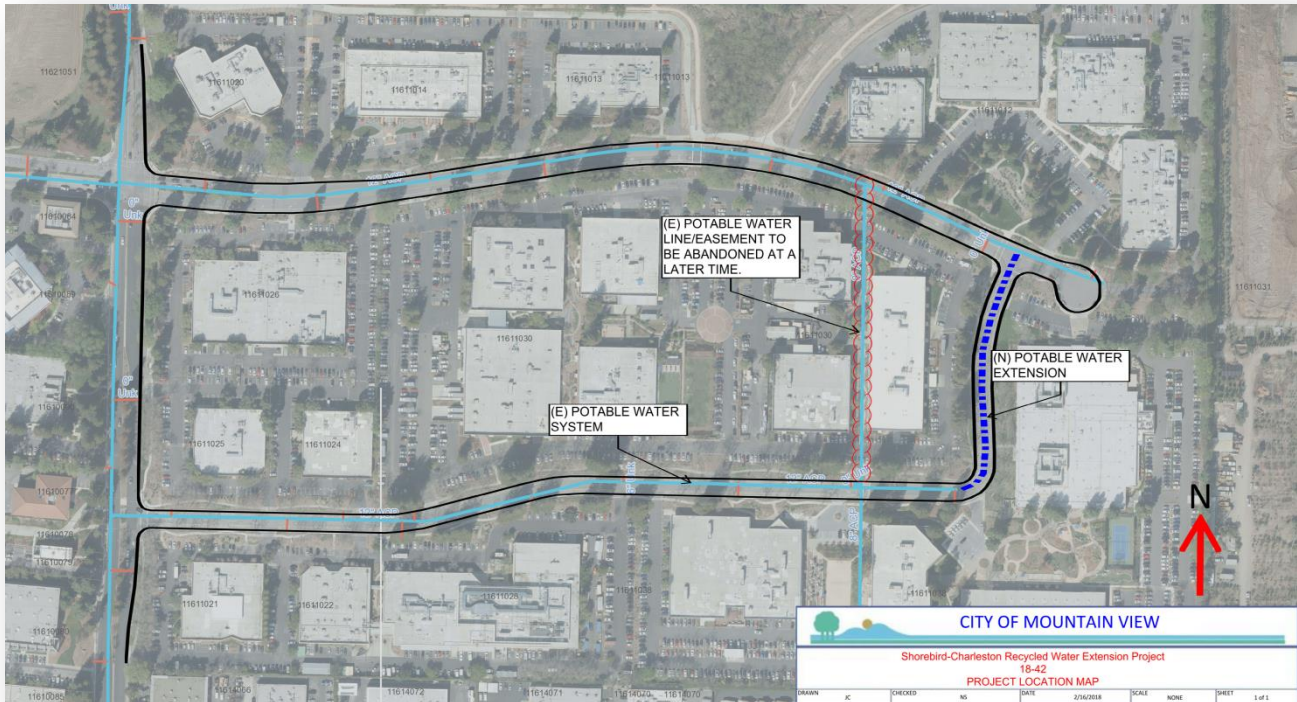


Figure 2

ANALYSIS

In November 2017, staff issued a Request for Proposals and received three responses. Mott McDonald was determined to be the best qualified firm based on evaluation of their written proposal, extensive experience in completing recycled water infrastructure

projects, demonstrated competence, and understanding of the project goals. The design contract consists of the following cost items:

Design:	\$217,000
Construction Support:	54,000
Optional Services (if needed):	
CEQA Report/Documents:	31,000
Potholing:	28,000
Arborist/Geotechnical Support:	10,000
Contingency:	<u>30,000</u>
TOTAL COST:	<u>\$370,000</u>

The recommended fees are within the range typically charged for such services, and staff considers the fees to be fair and reasonable. Pending contract approval, Mott McDonald can begin the project in April 2018 with an anticipated completion date of October 2018. Construction is anticipated to begin in early 2019.

FISCAL IMPACT

The Shorebird Way and Charleston Road Recycled Water Extension and Water System Improvements, Project 18-42, is funded with \$150,000 from the Shoreline Regional Park Community Fund and \$450,000 from a contribution from Google LLC for total funding of \$600,000. The project budget is adequate to fund the recommended agreement for design services.

ALTERNATIVES

1. Do not proceed with the project at this time.
2. Provide other direction.

PUBLIC NOTICING – Agenda posting.

Prepared by:

Jonathan Chavez
Assistant Engineer

Reviewed by:

Gregg A. Hosfeldt
Assistant Public Works Director

Approved by:

Michael A. Fuller
Public Works Director

Audrey Seymour Ramberg
Assistant City Manager

JC/TS/2/CAM
750-03-20-18CR-E

cc: Mott McDonald

APWD – Solomon, APWD – Hosfeldt, USM, PCE – Au, PCE – Macaraeg, SCE –
Muench, PCE – Sajjan, ACE – Chavez, File