



**DATE:** January 25, 2022

**CATEGORY:** Consent

**DEPT.:** Public Works

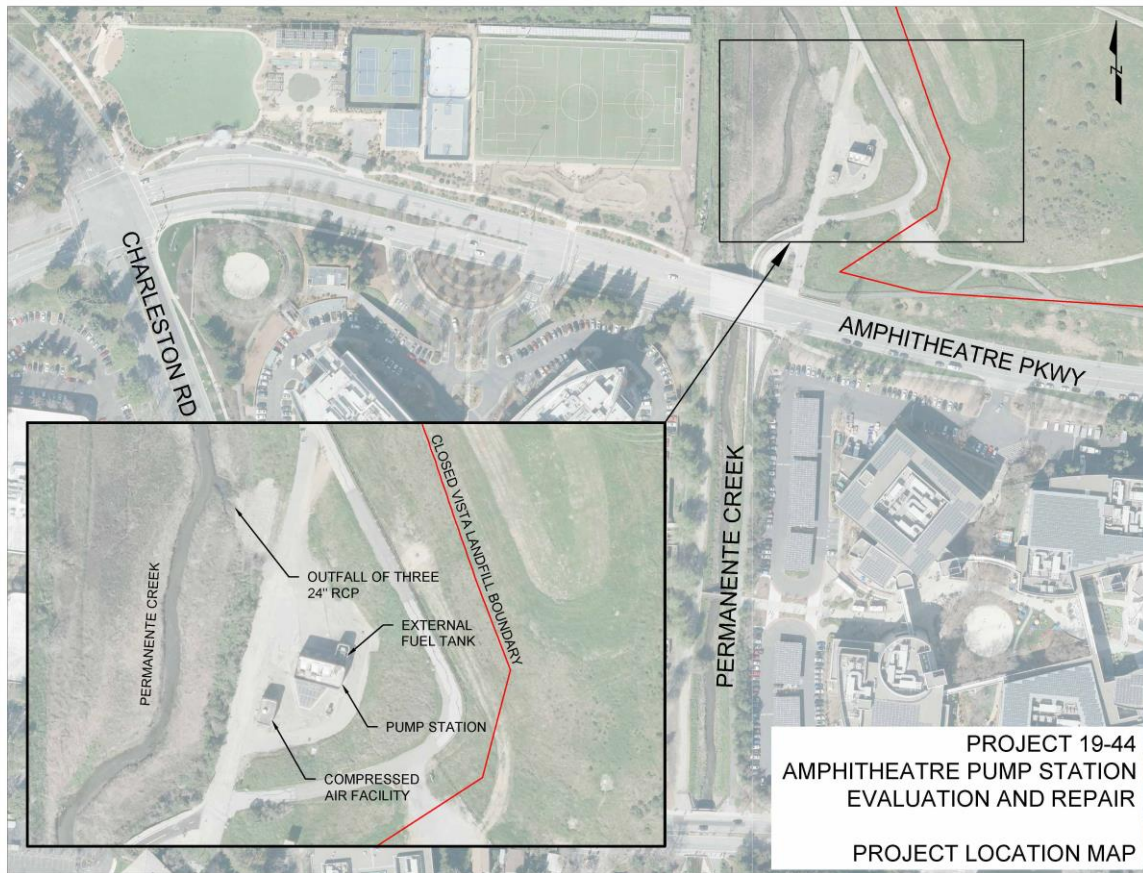
**TITLE:** **Amphitheatre Pump Station  
Evaluation and Repair, Project 19-  
44 – Authorize Professional Services  
Agreement**

### **RECOMMENDATION**

Authorize the City Manager or designee to execute a professional services agreement with Schaaf & Wheeler to provide an engineering study and design for Amphitheatre Pump Station Design and Repair, Project 19-44, in a not-to-exceed amount of \$110,000.

### **BACKGROUND**

The Amphitheatre Pump Station is a stormwater pump station located at 1601 Amphitheatre Parkway. The site is on the southwest corner of the closed Vista Landfill, just outside the area of buried refuse. The pump station was originally constructed in 1987 and consists of three diesel engine-driven pumps and one electric motor-driven pump. Although the pump station is in serviceable condition, many components of the station are reaching the end of their useful lives and essential equipment is becoming difficult to repair due to challenges in procuring replacement parts. In addition, the 2008 Storm Drain Pump Station Evaluation and the 2019 Storm Drain Master Plan recommended upgrading the diesel engines to electric motors.



**Figure 1: Project Location Map**

## ANALYSIS

In November 2021, a Request for Proposals (RFP) for engineering consulting services was issued to nine consulting firms and posted on the City's website. The RFP scope of work included a condition assessment, final design, and construction support for the rehabilitation and upgrade of the Amphitheatre Pump Station. Three firms responded to the RFP.

A review panel of Public Works staff deemed Schaaf & Wheeler to be the best-qualified firm based on the merits of Schaaf & Wheeler's written proposal, experience in completing similar projects, demonstrated competence, and understanding of the project. Schaaf & Wheeler also has extensive experience in the assessment of stormwater pump stations and utility infrastructure design.

The condition assessment task for the project is currently funded in the Capital Improvement Program (CIP). The condition assessment will include a preliminary investigation and a detailed evaluation of the station, including recommendations for maintenance, repair, and upgrades considering current codes, laws, industry standards, and safety best practices. For the condition assessment task, staff recommends Council approve a professional services agreement with Schaaf & Wheeler for a not-to-exceed amount of \$110,000, which includes \$89,574 for basic services and, as needed, additional services in the amount of \$20,426. The recommended fees are within the range typically charged for such services, and staff considers the fees to be fair and reasonable.

If the recommendation is approved, Schaff & Wheeler can begin condition assessment in March 2022 with an estimated completion in fall 2022. Upon availability of additional funding in the CIP, staff may seek Council approval to amend the contract with Schaaf & Wheeler in the future to complete the final design and provide construction support, consistent with the RFP scope of work.

### **FISCAL IMPACT**

Amphitheatre Pump Station Evaluation and Repair, Project 19-44, is funded with \$290,000 from the Shoreline Regional Park Community Fund, which is sufficient to fund the recommended agreement of \$110,000.

### **ALTERNATIVES**

1. Do not authorize the professional services agreement and direct staff to reissue the RFP.
2. Provide other direction.

**PUBLIC NOTICING** – Agenda posting.

Prepared by:

Toni Eguilos  
Assistant Engineer

Reviewed by:

Tina Tseng  
Principal Civil Engineer/Engineering  
and Environmental Compliance

Lisa Au  
Assistant Public Works Director

TE/TS/1/CAM  
980-01-25-22CR  
201125

Approved by:

Dawn S. Cameron  
Public Works Director

Audrey Seymour Ramberg  
Assistant City Manager/  
Chief Operating Officer