



DATE: August 24, 2021

CATEGORY: Consent

DEPT.: Public Works

TITLE: **Colony Street Connection to Permanente Creek Trail, Project 18-48 – Approve Plans and Specifications, and Authorize Bidding**

RECOMMENDATION

1. Approve plans and specifications for Colony Street Connection to Permanente Creek Trail, Project 18-48, and authorize staff to advertise the project for bids.
2. Authorize the City Manager or designee to award a construction contract to the lowest responsible bidder if the bid is within the project budget.

BACKGROUND

The Permanente Creek Trail (Trail) runs from West Middlefield Road to the Shoreline Regional Wildlife Recreation Area and is one of the key north/south bicycle and pedestrian routes in the City directly connecting into the North Bayshore Area. Predominantly due to the overcrossing of U.S. 101, there are no access points onto the Trail between Old Middlefield Way and Charleston Road, which are approximately 2,500' apart. This project will enhance access to the Trail by adding a residential neighborhood connection at the eastern terminus of Colony Street (see Figure 1).

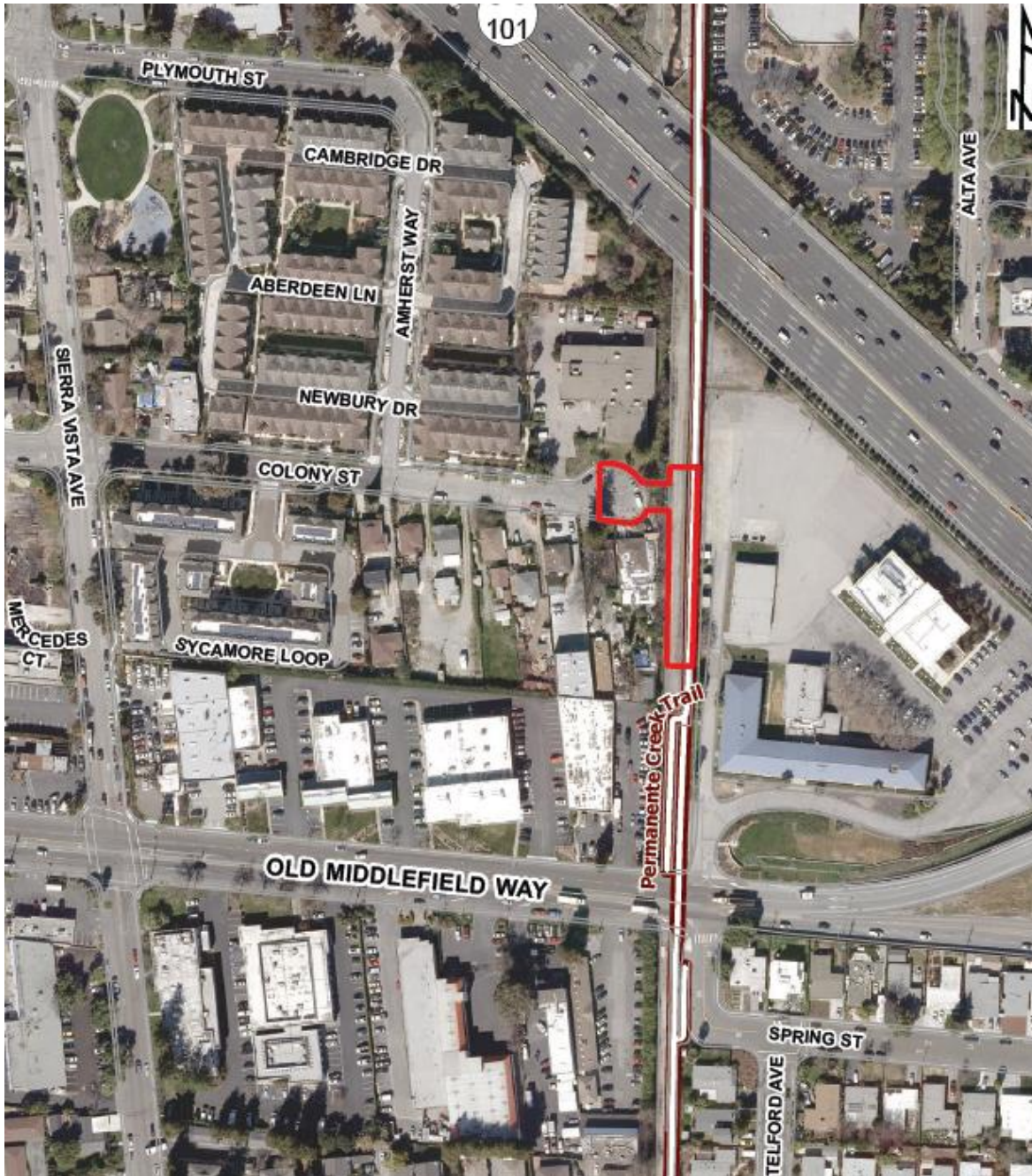


Figure 1: Project Location Map

ANALYSIS

The project will construct a bicycle and pedestrian access point to the Trail at the eastern terminus of Colony Street. The project scope includes construction of curb, gutter,

sidewalk, 10' wide asphalt concrete multi-use pathway with 2' wide shoulders on both sides (Caltrans Class I), storm drainage and installation of a prefabricated bridge, gates, signage, signing, and pavement markings.

Plans and specifications for the project are complete and available for viewing in the Public Works Department. If Council approves the recommended actions and a responsive bid within the project budget is received, construction is anticipated to begin in fall 2021 and be completed in summer 2022.

Environmental Clearance

This project has been determined to be categorically exempt in accordance with the requirements of Section 15301 ("Minor Alterations to Existing Public Facilities") of the California Environmental Quality Act (CEQA) Guidelines.

FISCAL IMPACT

Colony Street Connection to Permanente Creek Trail, Project 18-48, is funded with \$578,000 from the Capital Improvement Program Reserve Fund and \$578,000 from the Shoreline Regional Park Community Fund for a total project budget of \$1,156,000.

The estimated project cost is as follows:

Construction	\$ 650,000
Construction Contingency	65,000
Consultant Services	185,000
City Project Management	95,000
Construction Inspection and Testing	60,000
Permits and Miscellaneous	<u>15,000</u>
Subtotal	\$1,070,000
City Administration	<u>70,000</u>
<u>TOTAL PROJECT COST ESTIMATE</u>	<u>\$1,140,000</u>

There is sufficient funding for the project.

ALTERNATIVES

1. Do not approve the recommended actions and place the project on hold.
2. Provide other direction.

PUBLIC NOTICING

Agenda posting. Noticing for this meeting included a mailer to residents and property owners within 750' of the project site and an announcement on the City website.

Prepared by:

Joy Houghton
Associate Engineer

Reviewed by:

Robert Gonzales
Principal Civil Engineer

Edward Arango
Assistant Public Works Director/
City Engineer

Approved by:

Dawn S. Cameron
Public Works Director

Audrey Seymour Ramberg
Assistant City Manager/
Chief Operating Officer

JH/EP/1/CAM
907-08-24-21CR
201298

cc: CSD, APWD – Arango, PCE – Gonzales, PCE – Shah, AE – Houghton, SMA –
Goedicke, File (18-48), cmvgis@mountainview.gov