



**DATE:** June 25, 2019

**CATEGORY:** Consent

**DEPT.:** Public Works

**TITLE:** **Charleston Slough Improvement – Feasibility Study, Project 17-31 – Authorize Professional Design Services Contract**

### **RECOMMENDATION**

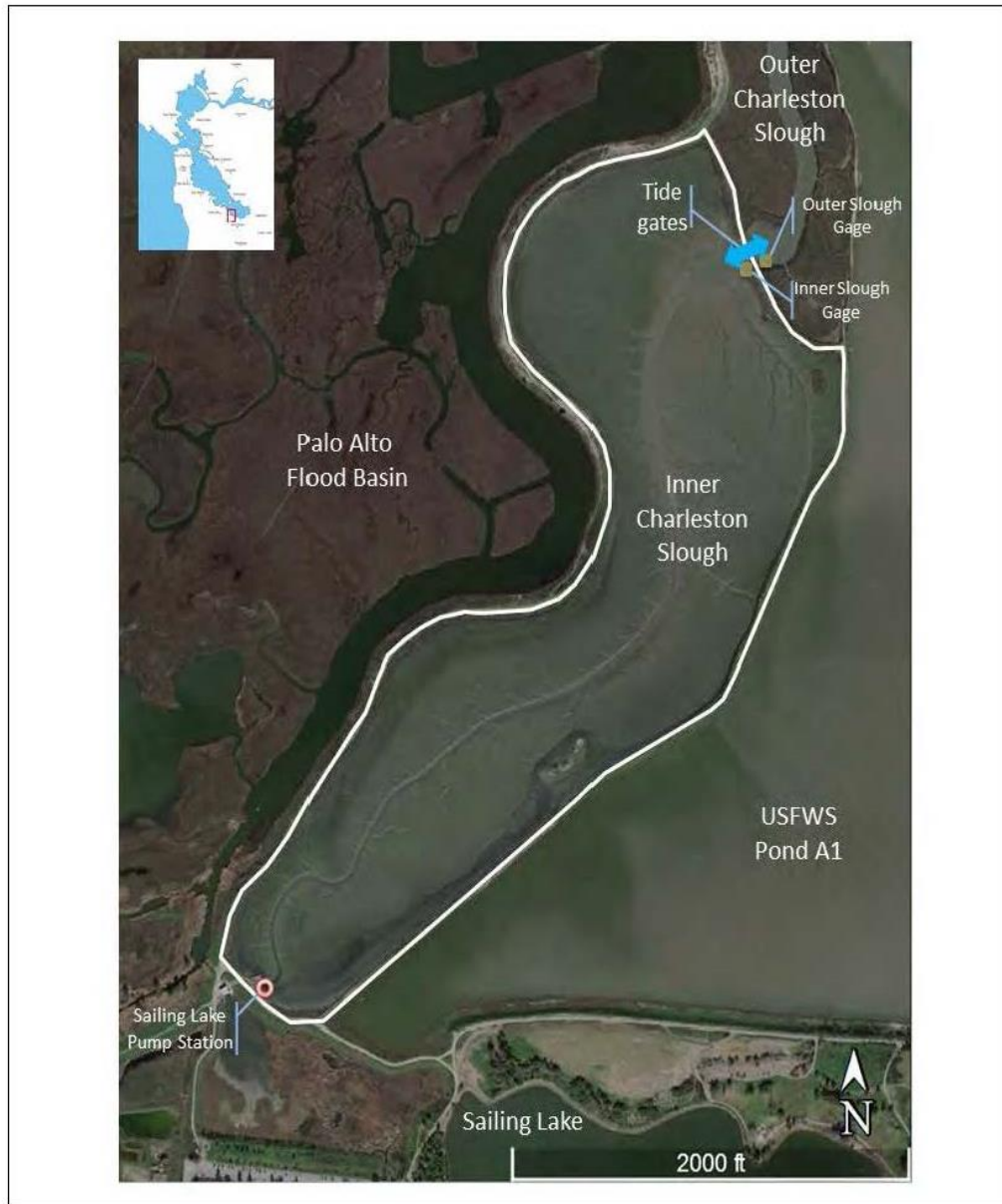
Authorize the City Manager to execute professional services agreements with Environmental Science Associates of San Francisco for a total of \$298,223 to provide environmental science services for the Charleston Slough Improvement – Feasibility Study, Project 17-31.

### **BACKGROUND**

The City of Mountain View owns and manages Inner Charleston Slough and the Shoreline Sailing Lake. The Inner Charleston Slough parcel consists of earth embankments surrounding more than 100 acres of tidal wetlands, which are predominantly mudflats and tidal marsh (Figure 1). A set of tide gates connects Charleston Slough to the Bay allowing for tidal exchange similar to, but somewhat protected from, Bay tides.

The Sailing Lake is a man-made, 50-acre water body within the City's Shoreline Park. The City manages the lake for small watercraft recreation based from the Shoreline Aquatic Center. To fill and flush the lake, up to 10 million gallons per day of Bay water is pumped in from Inner Charleston Slough via the Sailing Lake Pump Station and then gradually drains to lower Permanente Creek and back to the Bay.

When the City acquired Charleston Slough from the Leslie Salt Company in 1980, the City inherited a mitigation requirement to restore 53 acres of tidal marsh within the parcel. This requirement has not yet been met. The mitigation goal involves conversion of the open water environment to tidal marsh through deposition of sediment brought in with the tides. At the same time, an open channel must be maintained through Charleston Slough to the pump that supplies water to the Sailing Lake. While there has been some sediment deposition, it has not been sufficient to establish the required mudflats and tidal marsh.



SOURCE: DigitalGlobe (2016) Inner Charleston Slough Modeling . D160703.00

**Figure 1**  
Inner Charleston Slough Site Map

Staff met with San Francisco Bay Conservation and Development Commission (BCDC), the mitigation permit-issuing agency, in March 2019 to present the existing condition of Inner Charleston Slough, including the latest monitoring data, the management and restoration opportunities and constraints at Charleston Slough, and the City’s plan to

move towards the mitigation goals by developing a new set of mitigation measures at Inner Charleston Slough.

## **ANALYSIS**

Based on the latest direction from BCDC, the next steps for the project are to develop and evaluate mitigation actions for Charleston Slough and develop a concept plan for a proposed mitigation plan. In addition, due to the City's desire to maintain the Sailing Lake as a recreational facility, this project will review the existing lake and pump station operations, the lake's water quality and sediment deposition conditions, and develop adaptive management recommendations to optimize the lake operation while meeting the BCDC mitigation requirements.

A professional services agreement dated January 23, 2017, for \$83,523 was entered into with Environmental Science Associates (ESA) for consulting services related to Inner Charleston Slough Monitoring. On December 22, 2017, the agreement was amended to add an additional \$14,700 for a total of \$98,223. This agreement expired December 31, 2018 and, therefore, a new agreement for \$200,000 will result in an overall not-to-exceed total to ESA of \$298,223 for services provided on this project.

With the approval of the contract, ESA will begin the project in July 2019 and is anticipated to complete the draft mitigation plan in early 2020. If the City receives significant comments from the regulators, including the need for additional assessments and/or analysis, additional assistance from ESA would be required. The recommended contract amount provides a contingency for additional services.

## **FISCAL IMPACT**

The Charleston Slough Improvement – Feasibility Study, Project 17-31, is funded with \$817,000 from the City's Shoreline Regional Park Community Fund. The not-to-exceed amount for additional services of \$200,000 includes \$150,000 for basic services, including reimbursable expenses, and a contingency in the amount of \$50,000 for additional services. The overall not-to-exceed total ESA contract increases from \$98,223 to \$298,223 for services provided on this project. The project budget is adequate to fund the recommendation.

**ALTERNATIVES**

1. Do not authorize the agreement.
2. Provide other direction to staff.

**PUBLIC NOTICING** – Agenda posting.

Prepared by:

Raymond Wong  
Senior Project Manager

Reviewed by:

Lisa Au  
Principal Civil Engineer/Capital Projects

Approved by:

Michael A. Fuller  
Public Works Director

Audrey Seymour Ramberg  
Assistant City Manager/  
Chief Operating Officer

RW/TS/1/CAM  
931-06-25-19CR  
190430

Attachment: 1. ESA Scope of Work and Fees

cc: APWD – Solomon, CSD(A), RS – Chilkotowsky, SMA – Goedicke, PA – Li, File (17-31)