

CITY OF MOUNTAIN VIEW
RESOLUTION NO.
SERIES 2023

A RESOLUTION OF THE CITY COUNCIL OF THE CITY OF MOUNTAIN VIEW
ORDERING THE VACATION OF PUBLIC STREET AND SERVICE EASEMENTS
WITHIN THE NORTH BAYSHORE MASTER PLAN ON A 153-ACRE SITE
GENERALLY LOCATED NORTH OF U.S. 101 BOUNDED BY CHARLESTON ROAD
TO THE NORTH, STEVENS CREEK TO THE EAST, SPACE PARK WAY TO THE SOUTH,
AND HUFF AVENUE TO THE WEST

WHEREAS, on May 9, 2023, by its adoption of Resolution No. 18788, Series 2023, the City Council of the City of Mountain View, pursuant to the provisions of Part 3, Division 9 (Sections 8300 through 8363) of the Streets and Highways Code of the State (the Public Streets, Highways and Service Easement Vacation Law), declared its intention to vacate public street and service easements within the North Bayshore Master Plan on a 153-acre site generally located north of U.S. 101 bounded by Charleston Road to the north, Stevens Creek to the east, Space Park Way to the south, and Huff Avenue to the west; and

WHEREAS, by the said Resolution No. 18788, which Resolution is incorporated by reference as if fully set forth herein, the City Council set Tuesday, June 13, 2023, at 6:30 p.m. as the date and time for hearing all persons interested in or objecting to the proposed vacation, and directed the City Clerk to give notice of said hearing in the manner prescribed by law; and

WHEREAS, on June 13, 2023, the said public hearing was held and evidence was submitted to the City Council, bearing upon the present and prospective use of the street and public easements; and

WHEREAS, this vacation is necessary for the development, Application No. PL-2021-181, for a Planned Community Permit for a master plan to construct up to 7,000 residential units, 3.11 million square feet of office (including 1.3 million square feet of bonus floor area as net new office), approximately 14.8 acres of dedicated public park land, approximately 11.3 acres of privately owned, publicly accessible open space, 233,990 square feet of retail, 55,000 square feet of community space, an optional private district utilities system, and district parking garages all on an approximately 153-acre site generally located north of U.S. 101 bounded by Charleston Road to the north, Stevens Creek to the east, Space Park Way to the south, and Huff Avenue to the west; and

WHEREAS, this development shall be completed in multiple phases. The proposed vacations may also occur in phases with only portions of the easements being vacated with each development phase; now, therefore, be it

RESOLVED: that the City Council of the City of Mountain View finds, from all the evidence submitted, and the street and public easements described in Exhibit A and depicted in Exhibit B, attached hereto and incorporated herein by reference, are unnecessary for present and prospective public uses and that, therefore, this body orders that the said public easements described herein be, and the same are hereby, vacated, subject to the conditions specified in this Resolution; and be it

FURTHER RESOLVED: that the City Council of the City of Mountain View, in accordance with Streets and Highways Code Section 8324(b), finds that this Resolution shall not be recorded until the following conditions have been satisfied:

1. File with the City of Mountain View approved improvement plans, agreements, and performance bonds as a condition of approval for the project.
2. Submit utility clearance letters from CPUC regulated utilities stating that the easements are no longer needed.
3. All public utilities within the street and/or public service easement have been relocated or abandoned per City and/or utility company standards and new easements dedicated.
4. For public easements within the footprint of future buildings where the utility must be relocated prior to the issuance of building permit, Item 1 may be exempted with the approval of the Public Works Director.

This Resolution shall be recorded for each portion of public street and service easement to be vacated in accordance with approved City recording instructions. The recording documents shall include a plat and legal description of the portion of the public street or service easement to be vacated; and be it

FURTHER RESOLVED: that as finding of fact supporting its decision vacating the said public street and service easements with the North Bayshore Master Plan, this body finds as follows, and, in addition, incorporates by reference, as fully set forth herein, the Council report dated June 13, 2023:

1. The street easements are unnecessary for present or prospective public use with the reconfiguration of the circulation network in accordance with the North Bayshore Master Plan.

2. The existing utilities within the easements are proposed to either be removed or relocated as part of this project, and the existing easements are unnecessary for present or prospective public use.

3. New street and public service easements to be dedicated are shown on the Vesting Tentative Map (Application No. PL-2022-052).

DP/2/RESO
807-06-13-23r

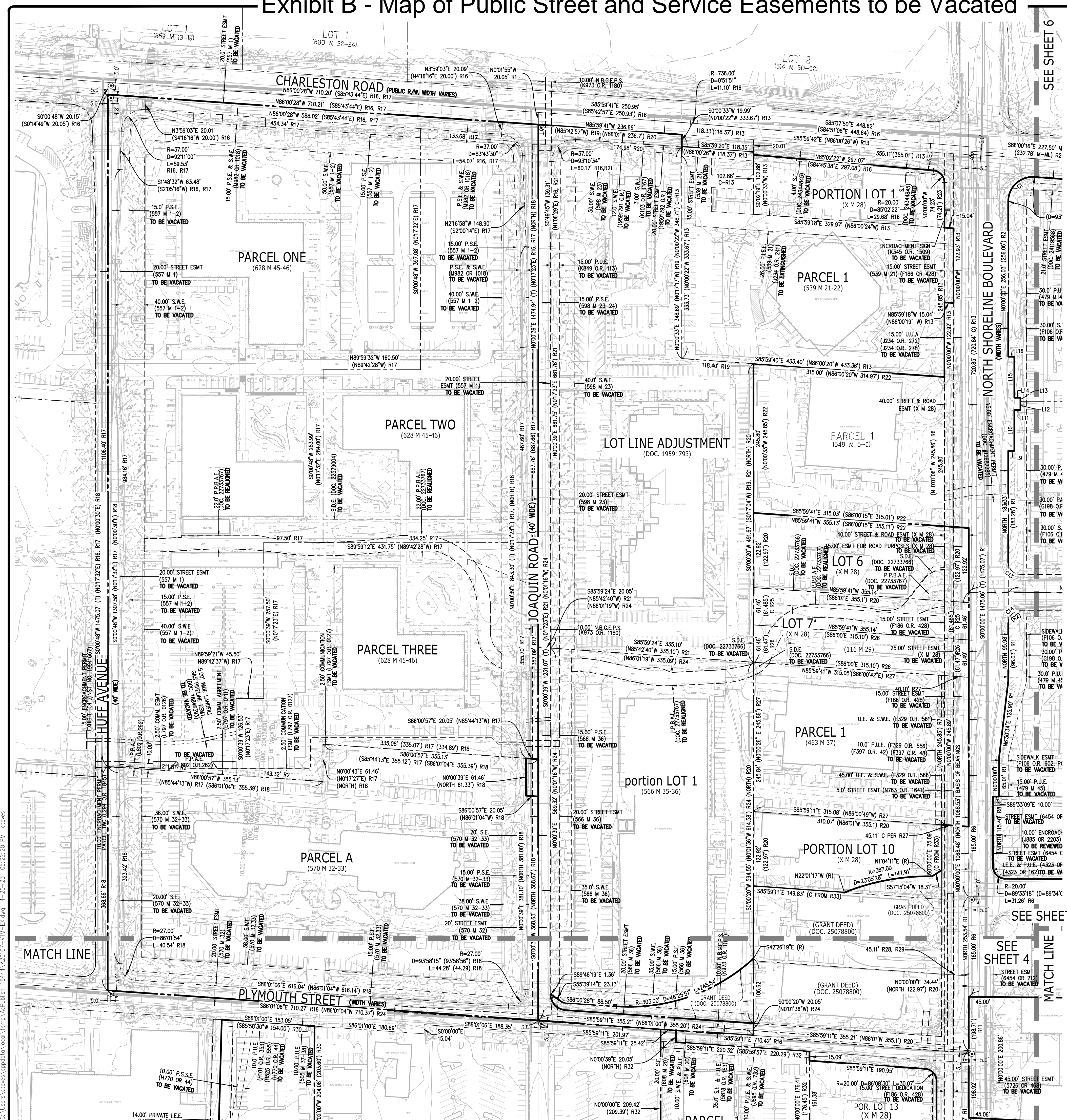
- Exhibits: A. Table of Public Street and Service Easements to Be Vacated
B. Map of Public Street and Service Easements to Be Vacated

Exhibit A - Table of Public Street and Service Easements to be Vacated

| | Easement Title | Document Reference | In Favor of / For the Purpose of | Affected Project APN(s) | Property Addresses | Easement Area to be Vacated (V) |
|----|----------------------------------|--------------------|----------------------------------|---|--|---------------------------------|
| 1 | Street & Utility Easement | 0222 O.R. 510 | City of Mountain View | 116-10-034 | 1400 SHORELINE BLVD | 27,443 |
| 2 | Sanitary Sewer Easement (S.S.E.) | 0222 O.R. 515 | City of Mountain View | 116-10-034 | 1400 SHORELINE BLVD | 14,915 |
| 3 | Temporary Street Easement | 442 M 31 | City of Mountain View | 116-11-030, 116-11-038, 116-11-039 | 030: 1225 CHARLESTON RD; 1245 CHARLESTON RD; 1215 CHARLESTON RD; 1295 CHARLESTON RD; 1230 SHOREBIRD WY; 1310 SHOREBIRD WY; 1350 SHOREBIRD WY 038: 1201 CHARLESTON RD; 1365 SHOREBIRD WY; 1345 SHOREBIRD WY; 1355 SHOREBIRD WY 039: 1395 CHARLESTON RD; 1397 CHARLESTON RD; 1399 CHARLESTON RD | 3,724 |
| 4 | Public Utility Easement (P.U.E.) | 442 M 31 | City of Mountain View | 116-11-030, 116-11-038, 116-11-039 | 030: 1225 CHARLESTON RD; 1245 CHARLESTON RD; 1215 CHARLESTON RD; 1295 CHARLESTON RD; 1230 SHOREBIRD WY; 1310 SHOREBIRD WY; 1350 SHOREBIRD WY 038: 1201 CHARLESTON RD; 1365 SHOREBIRD WY; 1345 SHOREBIRD WY; 1355 SHOREBIRD WY 039: 1395 CHARLESTON RD; 1397 CHARLESTON RD; 1399 CHARLESTON RD | 34,215 |
| 5 | Public Utility Easement (P.U.E.) | 479 M 45 | City of Mountain View | 116-11-021, 116-11-022, 116-11-024, 116-11-025, 116-11-039 | 021: 1397 SHOREBIRD WY 022: 1383 SHOREBIRD WY 024: 1380 SHOREBIRD WY 025: 1390 SHOREBIRD WY | 34,490 |
| 6 | Sidewalk Easement (S.W.E.) | 479 M 45 | City of Mountain View | 116-11-024, 116-11-025 | 024: 1380 SHOREBIRD WY 025: 1390 SHOREBIRD WY | 4,777 |
| 7 | Public Utility Easement (P.U.E.) | 498 M 36 | City of Mountain View | 116-11-028, 116-11-030, 116-11-038 | 028: 1371 SHOREBIRD WY; 1375 SHOREBIRD WY 030: 1225 CHARLESTON RD; 1245 CHARLESTON RD; 1215 CHARLESTON RD; 1295 CHARLESTON RD; 1230 SHOREBIRD WY; 1310 SHOREBIRD WY; 1350 SHOREBIRD WY 038: 1201 CHARLESTON RD; 1365 SHOREBIRD WY; 1345 SHOREBIRD WY; 1355 SHOREBIRD WY | 45,105 |
| 8 | Sidewalk Easement (S.W.E.) | 498 M 36 | City of Mountain View | 116-11-028, 116-11-030, 116-11-038 | 028: 1371 SHOREBIRD WY; 1375 SHOREBIRD WY 030: 1225 CHARLESTON RD; 1245 CHARLESTON RD; 1215 CHARLESTON RD; 1295 CHARLESTON RD; 1230 SHOREBIRD WY; 1310 SHOREBIRD WY; 1350 SHOREBIRD WY 038: 1201 CHARLESTON RD; 1365 SHOREBIRD WY; 1345 SHOREBIRD WY; 1355 SHOREBIRD WY | 18,005 |
| 9 | Public Utility Easement (P.U.E.) | 505 M 37 | City of Mountain View | 116-13-027 | 1555 PLYMOUTH ST | 1,535 |
| 10 | Street Easement (S.E.) | 539 M 21 | City of Mountain View | 116-10-089 | 1824 SHORELINE BLVD; 1842 SHORELINE BLVD; 1455 CHARLESTON RD | 3,619 |
| 11 | Street Easement (S.E.) | 557 M 1 | City of Mountain View | 116-10-102, 116-10-104, 116-10-105 | 102: 1585 CHARLESTON RD; 1565 CHARLESTON RD 104: 1010 JOAQUIN RD 105: 1545 CHARLESTON RD | 57,833 |
| 12 | Public Service Easement (P.S.E.) | 557 M 1 | City of Mountain View | 116-10-102, 116-10-104, 116-10-105 | 102: 1585 CHARLESTON RD; 1565 CHARLESTON RD 104: 1010 JOAQUIN RD 105: 1545 CHARLESTON RD | 40,927 |
| 13 | Sidewalk Easement (S.W.E.) | 557 M 1 | City of Mountain View | 116-10-102, 116-10-104, 116-10-105 | 102: 1585 CHARLESTON RD; 1565 CHARLESTON RD 104: 1010 JOAQUIN RD 105: 1545 CHARLESTON RD | 112,940 |
| 14 | Public Service Easement (P.S.E.) | 566 M 36 | City of Mountain View | 116-10-111 | 1015 JOAQUIN STREET | 8,980 |
| 15 | Sidewalk Easement (S.W.E.) | 566 M 36 | City of Mountain View | 116-10-111 | 1015 JOAQUIN STREET | 23,733 |
| 16 | Street Easement | 566 M 36 | City of Mountain View | 116-10-111 | 1015 JOAQUIN STREET | 19,137 |
| 17 | Sidewalk Easement (S.W.E.) | 570 M 32 | City of Mountain View | 116-10-095 | 1500 PLYMOUTH ST; 1550 PLYMOUTH ST | 50,413 |
| 18 | Public Service Easement (P.S.E.) | 570 M 32 | City of Mountain View | 116-10-095 | 1500 PLYMOUTH ST; 1550 PLYMOUTH ST | 20,673 |
| 19 | Street Easement (S.E.) | 570 M 32 | City of Mountain View | 116-10-095 | 1500 PLYMOUTH ST; 1550 PLYMOUTH ST | 28,466 |
| 20 | Public Utility Easement (P.U.E.) | 5818 O.R. 183 | City of Mountain View | 116-10-101 | 1435 PLYMOUTH ST; 1479 PLYMOUTH ST; 1477 PLYMOUTH ST | 2,107 |
| 21 | Street Easement (S.E.) | 5818 O.R. 183 | City of Mountain View | 116-10-101 | 1435 PLYMOUTH ST; 1479 PLYMOUTH ST; 1477 PLYMOUTH ST | 2,107 |
| 22 | Public Service Easement (P.S.E.) | 598 M 23 | City of Mountain View | 116-10-108 | 1053 JOAQUIN RD; 1055 JOAQUIN RD | 13,601 |
| 23 | Street Easement | 598 M 23 | City of Mountain View | 116-10-108 | 1053 JOAQUIN RD; 1055 JOAQUIN RD | 19,737 |
| 24 | Sidewalk Easement (S.W.E.) | 598 M 23 | City of Mountain View | 116-10-108 | 1053 JOAQUIN RD; 1055 JOAQUIN RD | 36,074 |
| 25 | Public Utility Easement (P.U.E.) | 608 M 20 | City of Mountain View | 116-10-101 | 1435 PLYMOUTH ST; 1479 PLYMOUTH ST; 1477 PLYMOUTH ST | 254 |
| 26 | Sidewalk Easement (S.W.E.) | 608 M 20 | City of Mountain View | 116-10-101 | 1435 PLYMOUTH ST; 1479 PLYMOUTH ST; 1477 PLYMOUTH ST | 254 |
| 27 | Street Easement (S.E.) | 608 M 20 | City of Mountain View | 116-10-101 | 1435 PLYMOUTH ST; 1479 PLYMOUTH ST; 1477 PLYMOUTH ST | 508 |
| 28 | Street & Utility Easement | 6153 O.R. 169 | City of Mountain View | 116-13-034 | 1400 SHORELINE BLVD | 11,096 |
| 29 | Street Easement | 9874 O.R. 685 | City of Mountain View | 116-14-095 | 1230 PEAR AVE | 3,946 |
| 30 | Utilities Easement | 9874 O.R. 685 | City of Mountain View | 116-14-095 | 1230 PEAR AVE | 3,946 |
| 31 | Landscape Easement (L.E.) | Doc. 15155449 | City of Mountain View | 116-10-088 | 1431 PLYMOUTH ST | 996 |
| 32 | Sidewalk Easement (S.W.E.) | Doc. 15155449 | City of Mountain View | 116-10-088 | 1431 PLYMOUTH ST | 996 |
| 33 | Sidewalk Easement (S.W.E.) | Doc. 19591791 | City of Mountain View | 116-10-107 | 1053 JOAQUIN RD; 1055 JOAQUIN RD | 1,429 |
| 34 | Public Service Easement (P.S.E.) | Doc. 19591792 | City of Mountain View | 116-10-107 | 1053 JOAQUIN RD; 1055 JOAQUIN RD | 2,366 |
| 35 | Street Easement (S.E.) | Doc. 19591792 | City of Mountain View | 116-10-107 | 1053 JOAQUIN RD; 1055 JOAQUIN RD | 2,366 |
| 36 | Public Utility Easement (U.E.) | Doc. 22665938 | City of Mountain View | 116-11-030 | 1225 CHARLESTON RD; 1245 CHARLESTON RD; 1215 CHARLESTON RD; 1295 CHARLESTON RD; 1230 SHOREBIRD WY; 1310 SHOREBIRD WY; 1350 SHOREBIRD WY | 2,715 |
| 37 | Public Access Easement (P.A.E.) | Doc. 22869138 | City of Mountain View | 116-11-038 | 1201 CHARLESTON RD; 1365 SHOREBIRD WY; 1345 SHOREBIRD WY; 1355 SHOREBIRD WY | 2,375 |
| 38 | Public Access Easement (P.A.E.) | Doc. 23506640 | City of Mountain View | 116-11-012 | 1200 CHARLESTON RD; 1230 CHARLESTON RD; 1220 CHARLESTON RD; 1206 CHARLESTON RD; 1210 CHARLESTON RD | 12,139 |
| 39 | Street Easement | Doc. 24119568 | City of Mountain View | 116-11-039 | 1395 CHARLESTON RD; 1397 CHARLESTON RD; 1399 CHARLESTON RD | 1,943 |
| 40 | Street Easement (S.E.) | Doc. 24344845 | City of Mountain View | 116-10-084 | 1890 N SHORELINE BLVD | 658 |
| 41 | Sidewalk Easement (S.W.E.) | F106 O.R. 602 | City of Mountain View | 116-11-021, 116-11-025, 116-11-039 | 021: 1397 SHOREBIRD WY 025: 1390 SHOREBIRD WY 039: 1395 CHARLESTON RD; 1397 CHARLESTON RD; 1399 CHARLESTON RD | 28,470 |
| 42 | Roadway Purposes | F186 O.R. 428 | City of Mountain View | 116-10-084, 116-10-89, 116-10-077, 116-10-078, 116-10-079, 116-10-109, 116-10-088 | SHORELINE BLVD (1843.95+) | 11,063 |
| 43 | Sidewalk Easement (S.W.E.) | F329 O.R. 556 | City of Mountain View | 116-10-080 | 1708 SHORELINE BLVD; 1742 SHORELINE BLVD | 5,528 |
| 44 | Public Utility Easement (U.E.) | F329 O.R. 556 | City of Mountain View | 116-10-080 | 1708 SHORELINE BLVD; 1742 SHORELINE BLVD | 5,528 |
| 45 | Public Utility Easement (P.U.E.) | F329 O.R. 566 | City of Mountain View | 116-10-080 | 1708 SHORELINE BLVD; 1742 SHORELINE BLVD | 2,453 |
| 46 | Sidewalk Easement (S.W.E.) | F329 O.R. 561 | City of Mountain View | 116-10-080 | 1708 SHORELINE BLVD; 1742 SHORELINE BLVD | 5,176 |
| 47 | Utility Easement (U.E.) | F329 O.R. 561 | City of Mountain View | 116-10-080 | 1708 SHORELINE BLVD; 1742 SHORELINE BLVD | 5,176 |
| 48 | Public Utility Easement (P.U.E.) | J895 O.R. 732 | City of Mountain View | 116-10-101 | 1435 PLYMOUTH ST; 1479 PLYMOUTH ST; 1477 PLYMOUTH ST | 1,120 |
| 49 | Sidewalk Easement (S.W.E.) | J895 O.R. 732 | City of Mountain View | 116-10-101 | 1435 PLYMOUTH ST; 1479 PLYMOUTH ST; 1477 PLYMOUTH ST | 1,120 |
| 50 | Sidewalk Easement (S.W.E.) | K103 O.R. 1167 | City of Mountain View | 116-10-107 | 1053 JOAQUIN RD; 1055 JOAQUIN RD | 364 |
| 51 | Public Utility Easement (P.U.E.) | K849 O.R. 113 | City of Mountain View | 116-10-095 | 1500 PLYMOUTH ST; 1550 PLYMOUTH ST | 6,200 |
| 52 | Public Service Easement (P.S.E.) | M982 O.R. 1018 | City of Mountain View | 116-10-102 AND 105 | 1545 CHARLESTON RD; 1565 CHARLESTON RD | 3,550 |
| 53 | Sidewalk Easement (S.W.E.) | M982 O.R. 1018 | City of Mountain View | 116-10-102 AND 105 | 1545 CHARLESTON RD; 1565 CHARLESTON RD | 3,550 |
| 54 | Street Easement (S.E.) | N763 O.R. 1641 | City of Mountain View | 116-10-080 | 1708 SHORELINE BLVD; 1742 SHORELINE BLVD | 1,223 |
| 55 | Street Easement | W M 24 | City of Mountain View | 116-14-028, 116-10-095 | 1220 PEAR AVE | 4,498 |

| | | | | | | |
|----|--------------------------|----------|-----------------------|-----------------------------------|--|---------|
| 56 | Street and Road Easement | X M 28 | City of Mountain View | 116-10-077,116-10-078, 116-10-079 | 077 : 1804 N SHORELINE BLVD 078 : 1764 SHORELINE BLVD 079 : 1758 SHORELINE BLVD 090 : 1808 SHORELINE BLVD; 1806 SHORELINE BLVD | 19,670 |
| 57 | Street Easement | 479 M 45 | City of Mountain View | Shorebird Way | Shorebird Way | 109,534 |
| 58 | Street Easement | 498 M 36 | City of Mountain View | Shorebird Way | Shorebird Way | 30,436 |

Exhibit B - Map of Public Street and Service Easements to be Vacated



| LINE # | DIRECTION | LENGTH |
|--------|-------------|---------|
| L1 | S86°00'16"E | 101.85' |
| L2 | S4°00'02"W | 6.92' |
| L3 | N86°00'08"W | 20.50' |
| L4 | N1°33'54"W | 7.00' |
| L5 | S80°00'08"W | 36.98' |
| L6 | S23°30'18"W | 23.77' |
| L7 | S23°30'18"W | 74.16' |
| L8 | S23°30'18"W | 26.51' |
| L9 | N90°00'00"E | 10.00' |
| L10 | N0°00'00"E | 67.50' |
| L11 | N90°00'00"E | 10.00' |
| L12 | N0°00'00"E | 14.21' |
| L13 | N0°00'00"E | 5.79' |
| L14 | N90°00'00"E | 10.00' |
| L15 | N0°00'00"E | 67.50' |
| L16 | N90°00'00"W | 10.00' |

| CURVE # | RADIUS | DELTA | LENGTH |
|---------|----------|------------|---------|
| C1 | 40.00' | 93°59'43" | 65.62' |
| C2 | 1236.00' | 5°33'46" | 120.00' |
| C3 | 20.00' | 89°59'55" | 31.42' |
| C4 | 20.00' | 86°02'49" | 30.04' |
| C5 | 1129.00' | 2°33'29" | 50.41' |
| C6 | 20.00' | 32°19'16" | 11.28' |
| C7 | 50.00' | 165°42'08" | 144.60' |
| C8 | 1095.63' | 1°31'45" | 29.24' |
| C9 | 832.68' | 0°20'39" | 5.00' |
| C10 | 60.00' | 92°49'45" | 97.21' |
| C11 | 500.00' | 16°06'29" | 140.57' |
| C12 | 500.00' | 16°08'36" | 140.88' |
| C13 | 20.00' | 90°00'00" | 31.42' |
| C14 | 20.00' | 90°00'00" | 31.42' |

NORTH

0 40 80 160 240

Scale 1" = 80'

LEGEND (cont'd)

| | |
|-----|--------------------------------------|
| --- | PROPERTY LINE - EXTERIOR BOUNDARY |
| --- | PROPERTY LINE - ADJACENT LOT |
| --- | RIGHT OF WAY - NEW |
| --- | PROPERTY LINE - EXISTING INTERIOR |
| --- | PROPERTY LINE - NEW INTERIOR |
| --- | EASEMENT LINE - EXISTING |
| --- | EASEMENT LINE - NEW |
| --- | UNDERLYING PROPERTY LINE |
| --- | MONUMENT LINE / CENTERLINE, AS NOTED |

ABBREVIATIONS

| | |
|--------------|---|
| AC | ASPHALTIC CONCRETE |
| AD | AREA DRAIN |
| APN | ASSASSOR'S PARCEL NUMBER |
| B.D. | BRASS DISK |
| BTM | BOTTOM |
| BW | BACK OF WALK |
| C/CONC | CONCRETE |
| CATV | CABLE TELEVISION |
| CB | CATCH BASIN |
| CLF | CHAIN LINK FENCE |
| CMP | CORRUGATED METAL PIPE |
| COMM | COMMUNICATION |
| CP | CATHODIC PROTECTION |
| CTVB | CABLE TELEVISION BOX |
| CTVB | CABLE TELEVISION BOX |
| D.D. | DIRECTOR'S DEED |
| DOC | DUCTILE IRON PIPE |
| DOC | DOCUMENT |
| DWY | DRIVEWAY |
| E | EAST |
| EB | ELECTRIC BOX |
| ECAB | ELECTRIC CABINET |
| ELEC | ELECTRIC |
| EM | ELECTRIC METER |
| EMH | ELECTRICAL MANHOLE |
| EP | EDGE OF PAVEMENT |
| ESMT | EASEMENT |
| EV | ELECTRIC VAULT |
| EVC | ELECTRIC VEHICLE CHARGING STATION |
| EW | EDGE OF WALK |
| FAB | FIRE ALARM BOX |
| FAC | FACE OF CURB |
| FF | FINISH FLOOR |
| FND | FIND |
| FBO | FIBER OPTIC BOX |
| FOMH | FIBER OPTIC MANHOLE |
| FV | FIBER OPTICS VAULT |
| GEN | GENERATOR |
| GV | GREASE INTERCEPTOR |
| I.E.E. | GAS VALVE |
| IB | INGRESS/EGRESS EASEMENT |
| ICV | IRRIGATION CONTROL VALVE |
| IR | IRRIGATION |
| IRRIC | IRRIGATION |
| JB | JUNCTION BOX |
| L.D. | LEGAL DESCRIPTION |
| L.E. | LANDSCAPE EASEMENT |
| L/S | LANDSCAPE |
| LIP | LIP OF GUTTER |
| M | MAPS |
| MH | MANHOLE |
| MON | MONUMENT |
| N | NORTH |
| N.B.G.E.P.S. | NORTH BAYSHORE GROUNDWATER EXTRACTION PIPING SYSTEM |
| NO. | NUMBER |
| O.R. | OFFICIAL RECORD |
| P.A.E. | PUBLIC ACCESS EASEMENT |
| PCL | PARCEL |
| P.I.E.E. | PRIVATE INGRESS/EGRESS EASEMENT |
| POR. | PORTION |
| P.P.A.E. | PRIVATE PEDESTRIAN ACCESS EASEMENT |
| P.P.B.A.E. | PRIVATE PEDESTRIAN AND BICYCLE ACCESS EASEMENT |
| P.S.E. | PUBLIC SERVICE EASEMENT |
| P.S.S.E. | PRIVATE SANITARY SEWER EASEMENT |
| P.S.P.E. | PUBLIC SERVICE PARKWAY EASEMENT |
| P.T&T | PUBLIC TELEPHONE & TELEGRAPH |
| P.U.E. | PUBLIC UTILITY EASEMENT |
| PE | PEDESTAL |
| PQ&E | PACIFIC GAS & ELECTRIC |
| PL | PROPERTY LINE |
| PVC | POLYVINYL CHLORIDE |
| R | RADIUS |
| R/W | RIGHT OF WAY |
| RCE | REGISTERED CIVIL ENGINEER |
| RE | REIM ELEVATION |
| RWB | RECLAIMED WATER BOX |
| RWL | RAIN WATER LEADER |
| RWM | RECLAIMED WATER METER |
| S | SOUTH |
| S.D.E. | STORM DRAIN EASEMENT |
| S.E. | STREET EASEMENT |
| S.S.E. | SANITARY SEWER EASEMENT |
| SDCO | STORM DRAIN CLEAN OUT |
| SDJB | STORM DRAIN JUNCTION BOX |
| SDMH | STORM DRAIN MANHOLE |
| S.B. | STREET LIGHT BOX |
| SSB | SANITARY SEWER BOX |
| SSCO | SANITARY SEWER CLEAN OUT |
| SSMH | SANITARY SEWER MANHOLE |
| S.W.E. | SIDEWALK EASEMENT |
| STL | STEEL |
| TC | TELEPHONE BOX |
| TC | TOP OF CURB |
| TCAB | TELEPHONE CABINET |
| TE | TRASH ENCLOSURE |
| TELE | TELEPHONE |
| TMH | TELEPHONE MANHOLE |
| TR | TOP OF RAMP |
| T&S | TRAFFIC SIGNAL |
| U.U.A. | UTILITY AGREEMENT |
| U.E. | UTILITY EASEMENT |
| UN | UNKNOWN |
| UV | UTILITY VAULT |
| W | WEST |
| W/W | WATER BOX |
| W.C.E. | WIRE CLEARANCE EASEMENT |
| WM | WATER METER |

RECORD MAP REFERENCES

| | | |
|-----|-------------------------|---------------|
| R1 | RECORD OF SURVEY | 504 M 14-16 |
| R2 | TRACT MAP #7033 | 479 M 45-46 |
| R3 | PARCEL MAP | 498 M 36-37 |
| R4 | PARCEL MAP | 459 M 54-55 |
| R5 | TRACT MAP #6621 | 442 M 31-32 |
| R6 | RECORD OF SURVEY | 182 M 27 |
| R7 | PARCEL MAP | 648 M 49-50 |
| R8 | GRANT DEED | DOC. 21173065 |
| R9 | GRANT DEED | DOC. 22013442 |
| R10 | GRANT DEED | DOC. 21086434 |
| R11 | GRANT DEED | DOC. 23089093 |
| R12 | SUBDIVISION MAP | W M 24 |
| R13 | PARCEL MAP | 539 M 21-22 |
| R14 | RECORD OF SURVEY | 573 M 7 |
| R15 | RECORD OF SURVEY | 478 M 9 |
| R16 | RECORD OF SURVEY | 575 M 45-46 |
| R17 | PARCEL MAP | 628 M 45-46 |
| R18 | PARCEL MAP | 570 M 32-33 |
| R19 | LOT LINE ADJUSTMENT | 19591793 |
| R20 | MAP OF LOS ALAMOS ACRES | X M 28 |
| R21 | PARCEL MAP | 598 M 23-24 |
| R22 | PARCEL MAP | 549 M 5-6 |
| R23 | GRANT DEED | DOC. 24178425 |
| R24 | PARCEL MAP | 566 M 36 |
| R25 | GRANT DEED | DOC. 21328095 |
| R26 | RECORD OF SURVEY | 116 M 29 |
| R27 | PARCEL MAP | 463 M 37 |
| R28 | CORNER RECORD | CR118 CR5-2W |
| R29 | EASEMENT DEED | 5535 OR 286 |
| R30 | PARCEL MAP | 505 M 37-38 |
| R31 | RECORD OF SURVEY | 142 M 50 |
| R32 | PARCEL MAP | 608 M 20 |
| R33 | GRANT DEED | DOC. 25078800 |

LEGEND

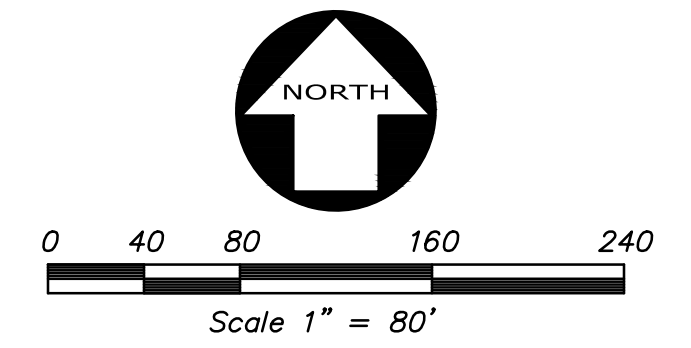
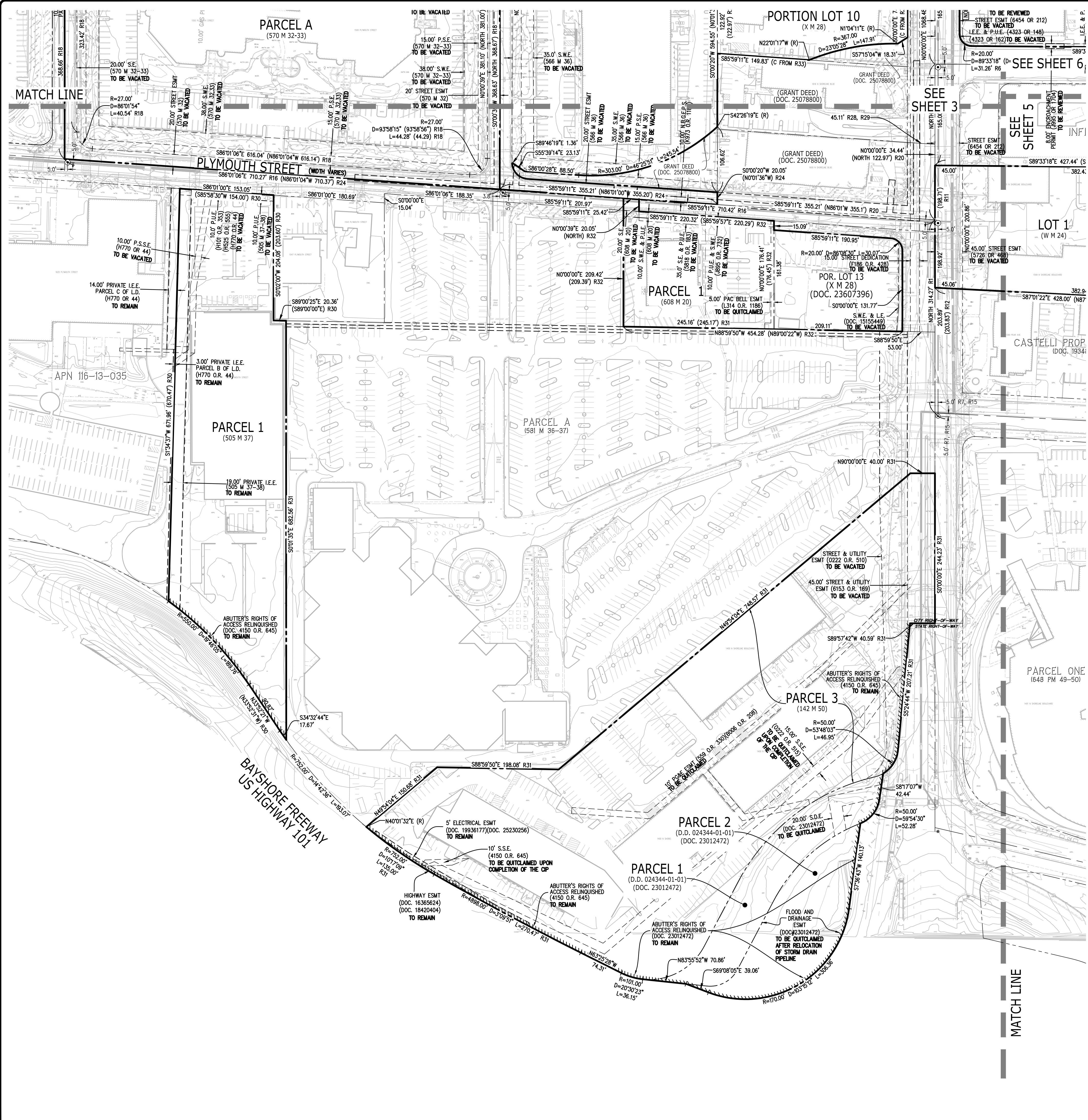
| | |
|-----|--|
| --- | ASPHALT BERM |
| --- | BUILDING LINE |
| --- | COMMUNICATION LINE |
| --- | CONCRETE/BLOCK WALL |
| --- | CONCRETE CURB |
| --- | CONCRETE CURB & GUTTER |
| --- | MAJOR CONTOUR LINE |
| --- | MINOR CONTOUR LINE |
| --- | DRIVEWAY |
| --- | EDGE OF PAVEMENT |
| --- | EDGE OF WATER/FLOWLINE |
| --- | EDGE OF ROCK |
| --- | ELECTRIC LINE |
| --- | FENCE LINE |
| --- | FIBER OPTICS LINE |
| --- | FIRE SERVICE LINE & VALVE |
| --- | GAS LINE-VALVE & METER |
| --- | GUARD RAIL |
| --- | IRRIGATION WATER LINE |
| --- | JOINT TRENCH LINE |
| --- | MONUMENT/MONUMENT LINE |
| --- | RETAINING WALL |
| --- | RECLAIMED WATER LINE & VALVE |
| --- | SANITARY SEWER LINE-MANHOLE & CLEANOUT |
| --- | SANITARY SEWER LINE OVER 24"DIAMETER |
| --- | SIDEWALK |
| --- | SPOT ELEVATION |
| --- | STORM DRAIN LINE-MANHOLE & CATCH BASIN |
| --- | STORM DRAIN LINE-MANHOLE & CATCH BASIN |
| --- | STORM DRAIN LINE OVER 24"DIAMETER |
| --- | STREET LIGHT CONDUIT LINE |
| --- | TRAFFIC SIGNAL CONDUIT LINE |
| --- | CABLE TELEVISION LINE |
| --- | UNKNOWN UTILITY LINE |
| --- | WATER LINE & VALVE |
| --- | WATER LINE OVER 24"DIAMETER |
| --- | ACCESSIBLE PARKING SYMBOL |
| --- | ANODE |
| --- | AREA DRAIN |
| --- | AUTOMATIC SPRINKLER RISER |
| --- | BACKFLOW PREVENTION DEVICE |
| --- | BLOWOFF VALVE |
| --- | DOUBLE DETECTOR CHECK VALVE |
| --- | ELECTROUER |
| --- | FIRE DEPARTMENT CONNECTION |
| --- | FIRE HYDRANT |
| --- | POST INDICATOR VALVE |
| --- | POWER POLE/JOINT POLE |
| --- | SURVEY CONTROL POINT |
| --- | TRANSFORMER |
| --- | TRAFFIC SIGNAL POLE |
| --- | TRAFFIC SIGN |
| --- | TREE |
| --- | UTILITY BOX |
| --- | WALK-BOLLARD LIGHT |
| --- | WATER VALVE |
| --- | WELL |

NORTH BAYSHORE MASTER PLAN
VESTING TENTATIVE MAP

FOR
GOOGLE LLC

MOUNTAIN VIEW, CALIFORNIA

| | |
|----------|-------------|
| DATE | APRIL, 2023 |
| SCALE | AS SHOWN |
| SURVEYOR | RSII |
| DRAWN BY | CT |
| JOB NO. | A20107 |
| SHEET | 3 |
| OF | 16 SHEETS |



LEGEND (cont'd)

| | |
|-----|--------------------------------------|
| --- | PROPERTY LINE - EXTERIOR BOUNDARY |
| --- | PROPERTY LINE - ADJACENT LOT |
| --- | RIGHT OF WAY - NEW |
| --- | PROPERTY LINE - EXISTING INTERIOR |
| --- | PROPERTY LINE - NEW INTERIOR |
| --- | EASEMENT LINE - EXISTING |
| --- | EASEMENT LINE - NEW |
| --- | UNDERLYING PROPERTY LINE |
| --- | MONUMENT LINE / CENTERLINE, AS NOTED |

ABBREVIATIONS

| | |
|--------------|---|
| AC | ASPHALTIC CONCRETE |
| AD | AREA DRAIN |
| APN | ASSESSOR'S PARCEL NUMBER |
| B.D. | BRASS DISK |
| BTM | BOTTOM |
| BW | BACK OF WALK |
| C/CONC | CONCRETE |
| CATV | CABLE TELEVISION |
| CB | CATCH BASIN |
| CLF | CHAIN LINK FENCE |
| CMP | CORRUGATED METAL PIPE |
| COMM | COMMUNICATION |
| CP | CATHODIC PROTECTION |
| CTVB | CABLE TELEVISION BOX |
| CTVB | CABLE TELEVISION BOX |
| D.D. | DIRECTOR'S DEED |
| DDC | DUCTILE IRON PIPE |
| DOC | DOCUMENT |
| DWY | DRIVEWAY |
| E | EAST |
| EB | ELECTRIC BOX |
| ECAB | ELECTRIC CABINET |
| ELEC | ELECTRIC |
| EM | ELECTRIC METER |
| EMH | ELECTRICAL MANHOLE |
| EP | EDGE OF PAVEMENT |
| ESMT | EASEMENT |
| EV | ELECTRIC VAULT |
| EVC | ELECTRIC VEHICLE CHARGING STATION |
| EW | EDGE OF WALK |
| FAB | FIRE ALARM BOX |
| FC | FACE OF CURB |
| FF | FINISH FLOOR |
| FO | FOUND |
| FND | FOUNDATION |
| FOB | FIBER OPTIC BOX |
| FOMH | FIBER OPTIC MANHOLE |
| FV | FIBER OPTICS VAULT |
| GEN | GENERATOR |
| GV | GREASE INTERCEPTOR |
| GV | GAS VALVE |
| I.E.E. | INGRESS/EGRESS EASEMENT |
| IB | IRRIGATION BOX |
| ICV | IRRIGATION CONTROL VALVE |
| INVERT | INVERT ELEVATION |
| IRRIG | IRRIGATION |
| JB | JUNCTION BOX |
| L.D. | LEGAL DESCRIPTION |
| L.E. | LANDSCAPE EASEMENT |
| L/S | LANDSCAPE |
| LIP | LIP OF GUTTER |
| M | MAPS |
| MH | MANHOLE |
| MON | MONUMENT |
| N | NORTH |
| N.B.G.E.P.S. | NORTH BAYSHORE GROUNDWATER EXTRACTION PIPING SYSTEM |
| NO. | NUMBER |
| O.R. | OFFICIAL RECORD |
| P.A.E. | PUBLIC ACCESS EASEMENT |
| PCL | PARCEL |
| P.I.E.E. | PRIVATE INGRESS/EGRESS EASEMENT |
| POR. | PORTION |
| P.P.A.E. | PRIVATE PEDESTRIAN ACCESS EASEMENT |
| P.P.B.A.E. | PRIVATE PEDESTRIAN AND BICYCLE ACCESS EASEMENT |
| P.S.E. | PUBLIC SERVICE EASEMENT |
| P.S.S.E. | PRIVATE SANITARY SEWER EASEMENT |
| P.S.P.E. | PUBLIC SERVICE PARKWAY EASEMENT |
| P.T&T | PACIFIC TELEPHONE & TELEGRAPH |
| P.U.E. | PUBLIC UTILITY EASEMENT |
| PE | PEDESTAL |
| PGE | PACIFIC GAS & ELECTRIC |
| PL | PROPERTY LINE |
| PVC | POLYVINYL CHLORIDE |
| R | RADIUS |
| R | RECORD MAP REFERENCE |
| R/W | RIGHT OF WAY |
| RCE | REGISTERED CIVIL ENGINEER |
| RE | RIM ELEVATION |
| RWB | RECLAIMED WATER BOX |
| RWL | RAIN WATER LEADER |
| RWM | RECLAIMED WATER METER |
| S | SOUTH |
| S.D.E. | STORM DRAIN EASEMENT |
| S.E.E. | SEWER EASEMENT |
| S.S.E. | SANITARY SEWER EASEMENT |
| SDCO | STORM DRAIN CLEAN OUT |
| SDJB | STORM DRAIN JUNCTION BOX |
| SDMH | STORM DRAIN MANHOLE |
| S.D.B. | STREET LIGHT BOX |
| SSB | SANITARY SEWER BOX |
| SSCO | SANITARY SEWER CLEAN OUT |
| SSMH | SANITARY SEWER MANHOLE |
| S.W.E. | SEWER EASEMENT |
| STB | STEEL |
| TC | TELEPHONE BOX |
| TC | TOP OF CURB |
| TCAB | TELEPHONE CABINET |
| TE | TRASH ENCLOSURE |
| TELE | TELEPHONE |
| TMH | TELEPHONE MANHOLE |
| TR | TOP OF RAMP |
| TSB | TRAFFIC SIGNAL BOX |
| U.U.A. | UNDERGROUND UTILITY AGREEMENT |
| U.E. | UTILITY EASEMENT |
| UB | UTILITY BOX |
| UNK | UNKNOWN |
| UV | UTILITY VAULT |
| W | WEST |
| W | WALK |
| WB | WATER BOX |
| W.C.E. | WIRE CLEARANCE EASEMENT |
| WM | WATER METER |

RECORD MAP REFERENCES

| | | |
|-----|-------------------------|---------------|
| R1 | RECORD OF SURVEY | 504 M 14-16 |
| R2 | TRACT MAP #7033 | 479 M 45-46 |
| R3 | PARCEL MAP | 498 M 36-37 |
| R4 | PARCEL MAP | 459 M 54-55 |
| R5 | TRACT MAP #6621 | 442 M 31-32 |
| R6 | RECORD OF SURVEY | 182 M 27 |
| R7 | PARCEL MAP | 648 M 49-50 |
| R8 | GRANT DEED | DOC. 21173065 |
| R9 | GRANT DEED | DOC. 22013442 |
| R10 | GRANT DEED | DOC. 21086434 |
| R11 | GRANT DEED | DOC. 23089093 |
| R12 | SUBDIVISION MAP | W M 24 |
| R13 | PARCEL MAP | 539 M 21-22 |
| R14 | RECORD OF SURVEY | 573 M 7 |
| R15 | RECORD OF SURVEY | 478 M 9 |
| R16 | RECORD OF SURVEY | 575 M 45-46 |
| R17 | PARCEL MAP | 628 M 45-46 |
| R18 | PARCEL MAP | 570 M 32-33 |
| R19 | LOT LINE ADJUSTMENT | 19591793 |
| R20 | MAP OF LOS ALAMOS ACRES | X M 28 |
| R21 | PARCEL MAP | 598 M 23-24 |
| R22 | PARCEL MAP | 549 M 5-6 |
| R23 | GRANT DEED | DOC. 24178425 |
| R24 | PARCEL MAP | 566 M 36 |
| R25 | GRANT DEED | DOC. 21328095 |
| R26 | RECORD OF SURVEY | 116 M 29 |
| R27 | PARCEL MAP | 463 M 37 |
| R28 | CORNER RECORD | CR118 CR5-2W |
| R29 | EASEMENT DEED | 5535 OR 286 |
| R30 | PARCEL MAP | 505 M 37-38 |
| R31 | RECORD OF SURVEY | 142 M 50 |
| R32 | PARCEL MAP | 608 M 20 |
| R33 | GRANT DEED | DOC. 25078800 |

LEGEND

| | |
|-----|--|
| --- | ASPHALT BERM |
| --- | BUILDING LINE |
| --- | COMMUNICATION LINE |
| --- | CONCRETE/BLOCK WALL |
| --- | CONCRETE CURB |
| --- | CONCRETE CURB & GUTTER |
| --- | MAJOR CONTOUR LINE |
| --- | MINOR CONTOUR LINE |
| --- | DRIVEWAY |
| --- | EDGE OF PAVEMENT |
| --- | EDGE OF WATER/FLOWLINE |
| --- | EDGE OF ROCK |
| --- | ELECTRIC LINE |
| --- | FENCE LINE |
| --- | FIBER OPTICS LINE |
| --- | FIRE SERVICE LINE & VALVE |
| --- | GAS LINE-VALVE & METER |
| --- | GUARD RAIL |
| --- | IRRIGATION WATER LINE |
| --- | JOINT TRENCH LINE |
| --- | MONUMENT/MONUMENT LINE |
| --- | RETAINING WALL |
| --- | RECLAIMED WATER LINE & VALVE |
| --- | SANITARY SEWER LINE-MANHOLE & CLEANOUT |
| --- | SANITARY SEWER LINE OVER 24"DIAMETER |
| --- | SIDEWALK |
| --- | SPOT ELEVATION |
| --- | STORM DRAIN LINE-MANHOLE & CATCH BASIN |
| --- | STORM DRAIN LINE-MANHOLE & CATCH BASIN |
| --- | STORM DRAIN LINE OVER 24"DIAMETER |
| --- | STREET LIGHT CONDUIT LINE |
| --- | TELEPHONE LINE |
| --- | TRAFFIC SIGNAL CONDUIT LINE |
| --- | CABLE TELEVISION LINE |
| --- | UNKNOWN UTILITY LINE |
| --- | WATER LINE & VALVE |
| --- | WATER LINE OVER 24"DIAMETER |
| --- | ACCESSIBLE PARKING SYMBOL |
| --- | ANODE |
| --- | AREA DRAIN |
| --- | AUTOMATIC SPRINKLER RISER |
| --- | BACKFLOW PREVENTION DEVICE |
| --- | BLOWOFF VALVE |
| --- | DOUBLE DETECTOR CHECK VALVE |
| --- | ELECTROUER |
| --- | FIRE DEPARTMENT CONNECTION |
| --- | FIRE HYDRANT |
| --- | POST INDICATOR VALVE |
| --- | POWER POLE/Joint Pole |
| --- | SURVEY CONTROL POINT |
| --- | TRANSFORMER |
| --- | TRAFFIC SIGNAL POLE |
| --- | TRAFFIC SIGN |
| --- | TREE |
| --- | UTILITY BOX |
| --- | WALK-BOLLARD LIGHT |
| --- | WATER VALVE |
| --- | WELL |

KIER+WRIGHT

3350 Scott Boulevard, Building 22
Santa Clara, California 95054
Phone: (408) 727-6665
www.kierwright.com

CALIFORNIA

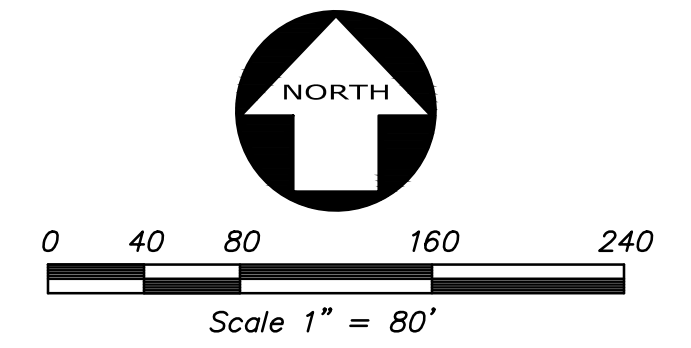
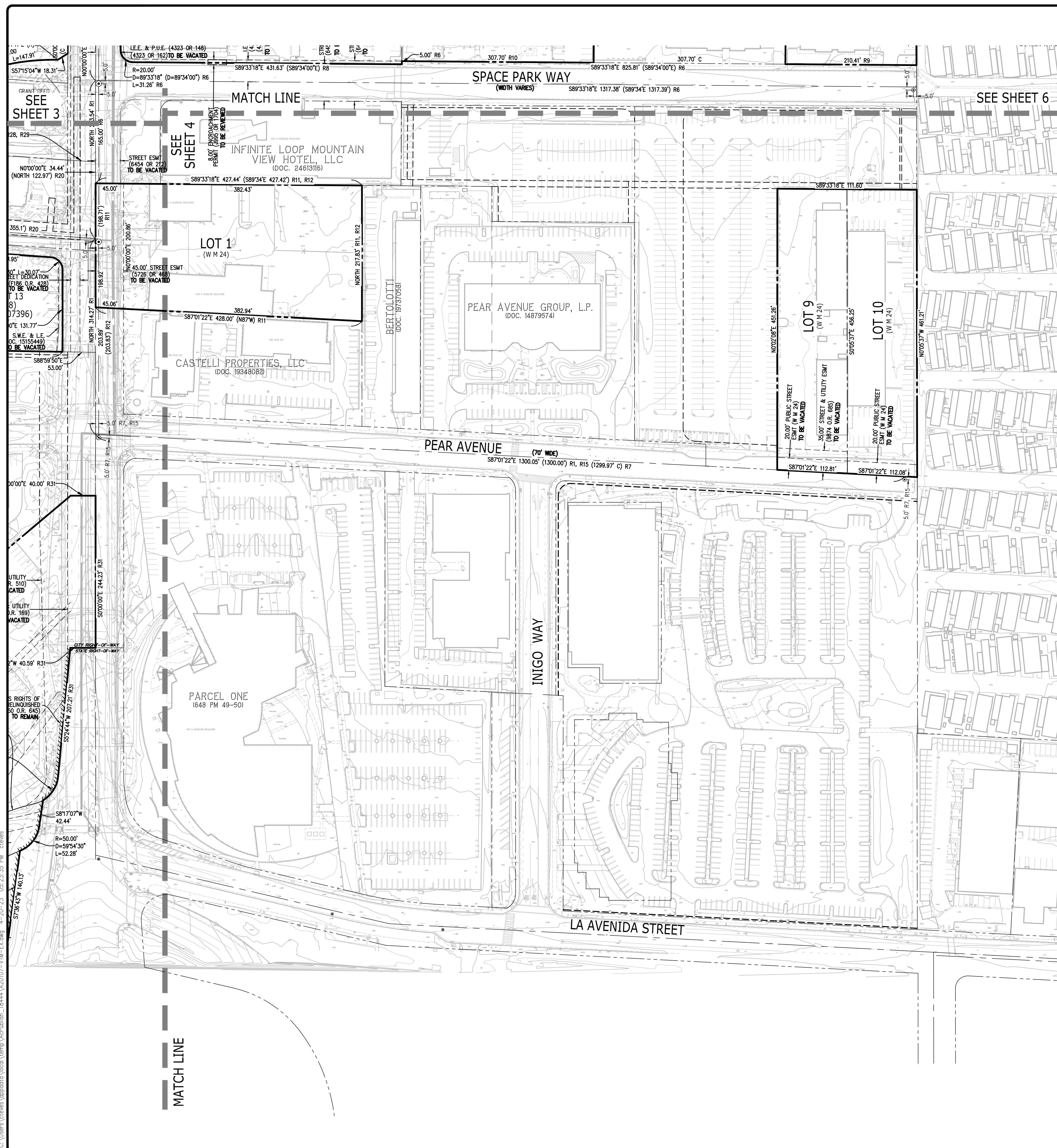
**NORTH BAYSHORE MASTER PLAN
VESTING TENTATIVE MAP**

FOR
GOOGLE LLC

MOUNTAIN VIEW,

| | |
|----------|-------------|
| DATE | APRIL, 2023 |
| SCALE | AS SHOWN |
| SURVEYOR | RSII |
| DRAWN BY | CT |
| JOB NO. | A20107 |
| SHEET | 4 |
| OF | 16 SHEETS |

EXISTING CONDITIONS - JOAQUIN SOUTH



LEGEND (cont'd)

| | |
|--|--------------------------------------|
| | PROPERTY LINE - EXTERIOR BOUNDARY |
| | PROPERTY LINE - ADJACENT LOT |
| | RIGHT OF WAY - NEW |
| | PROPERTY LINE - EXISTING INTERIOR |
| | PROPERTY LINE - NEW INTERIOR |
| | EASEMENT LINE - EXISTING |
| | EASEMENT LINE - NEW |
| | UNDERLYING PROPERTY LINE |
| | MONUMENT LINE / CENTERLINE, AS NOTED |

ABBREVIATIONS

| | |
|---------------|---|
| AC | ASPHALTIC CONCRETE |
| AD | AREA DRAIN |
| APN | ASSESSOR'S PARCEL NUMBER |
| B.D. | BRASS DISK |
| BTM | BOTTOM |
| BW | BACK OF WALK |
| C/CONC | CONCRETE |
| CATV | CABLE TELEVISION |
| CB | CATCH BASIN |
| CLF | CHAIN LINK FENCE |
| CMP | CORRUGATED METAL PIPE |
| COMM | COMMUNICATION |
| CP | CATHODIC PROTECTION |
| CTVB | CABLE TELEVISION BOX |
| CTVB | CABLE TELEVISION BOX |
| D.D. | DIRECTOR'S DEED |
| DIP | DUCTILE IRON PIPE |
| DOC | DOCUMENT |
| DWY | DRIVEWAY |
| E | EAST |
| EB | ELECTRIC BOX |
| ECAB | ELECTRIC CABINET |
| ELEC | ELECTRIC |
| EM | ELECTRIC METER |
| EMH | ELECTRICAL MANHOLE |
| EP | EDGE OF PAVEMENT |
| ESMT | EASEMENT |
| EV | ELECTRIC VAULT |
| EVC | ELECTRIC VEHICLE CHARGING STATION |
| EW | EDGE OF WALK |
| FAB | FIRE ALARM BOX |
| FC | FACE OF CURB |
| FF | FINISH FLOOR |
| FND | FOUND |
| FOB | FIBER OPTIC BOX |
| FOMH | FIBER OPTIC MANHOLE |
| FV | FIBER OPTICS VAULT |
| GEN | GENERATOR |
| G | GREASE INTERCEPTOR |
| GV | GAS VALVE |
| I.E.E. | INGRESS/EGRESS EASEMENT |
| IB | IRRIGATION BOX |
| ICV | IRRIGATION CONTROL VALVE |
| INVERT | INVERT ELEVATION |
| IRRIG | IRRIGATION |
| JB | JUNCTION BOX |
| L.D. | LEGAL DESCRIPTION |
| L.E. / L.S.E. | LANDSCAPE EASEMENT |
| L/S | LANDSCAPE |
| LIP | LIP OF GUTTER |
| M | MAPS |
| MH | MANHOLE |
| MON | MONUMENT |
| N | NORTH |
| N.B.G.E.P.S. | NORTH BAYSHORE GROUNDWATER EXTRACTION PIPING SYSTEM |
| NO. | NUMBER |
| O.R. | OFFICIAL RECORD |
| P.A.E. | PUBLIC ACCESS EASEMENT |
| PCL | PARCEL |
| P.I.E.E. | PRIVATE INGRESS/EGRESS EASEMENT |
| POR. | PORTION |
| P.P.A.E. | PRIVATE PEDESTRIAN ACCESS EASEMENT |
| P.P.B.A.E. | PRIVATE PEDESTRIAN AND BICYCLE ACCESS EASEMENT |
| P.S.E. | PUBLIC SERVICE EASEMENT |
| P.S.S.E. | PRIVATE SANITARY SEWER EASEMENT |
| P.S.P.E. | PUBLIC SERVICE PARKWAY EASEMENT |
| P1&T | PACIFIC TELEPHONE & TELEGRAPH |
| P.U.E. | PUBLIC UTILITY EASEMENT |
| PEDEST | PEDESTAL |
| PQ&E | PACIFIC GAS & ELECTRIC |
| PL | PROPERTY LINE |
| PVC | POLYVINYL CHLORIDE |
| R | RADIAL BEARING |
| R1 | RECORD MAP REFERENCE |
| R/W | RIGHT OF WAY |
| RCE | REGISTERED CIVIL ENGINEER |
| RE | RIM ELEVATION |
| RWB | RECLAIMED WATER BOX |
| RWL | RAIN WATER LEADER |
| RWM | RECLAIMED WATER METER |
| S | SOUTH |
| S.D.E. | STORM DRAIN EASEMENT |
| S.E. | SEWER EASEMENT |
| S.S.E. | SANITARY SEWER EASEMENT |
| SDCO | STORM DRAIN CLEAN OUT |
| SDJB | STORM DRAIN JUNCTION BOX |
| SDMH | STORM DRAIN MANHOLE |
| S.B. | STREET LIGHT BOX |
| SSB | SANITARY SEWER BOX |
| SSCO | SANITARY SEWER CLEAN OUT |
| SSMH | SANITARY SEWER MANHOLE |
| S.W.E. | SIDEWALK EASEMENT |
| STL | STEEL |
| TE | TELEPHONE BOX |
| TC | TOP OF CURB |
| TCAB | TELEPHONE CABINET |
| TE | TRASH ENCLOSURE |
| TELE | TELEPHONE |
| TMH | TELEPHONE MANHOLE |
| TR | TOP OF RAMP |
| TSB | TRAFFIC SIGNAL BOX |
| U.U.A. | UNDERGROUND UTILITY AGREEMENT |
| U.E. | UTILITY EASEMENT |
| UB | UTILITY BOX |
| UNK | UNKNOWN |
| UV | UTILITY VAULT |
| W | WEST |
| W/B | WATER BOX |
| W.C.E. | WIRE CLEARANCE EASEMENT |
| WM | WATER METER |

RECORD MAP REFERENCES

| | | |
|-----|-------------------------|---------------|
| R1 | RECORD OF SURVEY | 504 M 14-16 |
| R2 | TRACT MAP #7033 | 479 M 45-46 |
| R3 | PARCEL MAP | 498 M 36-37 |
| R4 | PARCEL MAP | 459 M 54-55 |
| R5 | TRACT MAP #6621 | 442 M 31-32 |
| R6 | RECORD OF SURVEY | 182 M 27 |
| R7 | PARCEL MAP | 648 M 49-50 |
| R8 | GRANT DEED | DOC. 21173065 |
| R9 | GRANT DEED | DOC. 22013442 |
| R10 | GRANT DEED | DOC. 21086434 |
| R11 | GRANT DEED | DOC. 23089093 |
| R12 | SUBDIVISION MAP | W M 24 |
| R13 | PARCEL MAP | 539 M 21-22 |
| R14 | RECORD OF SURVEY | 573 M 7 |
| R15 | RECORD OF SURVEY | 478 M 9 |
| R16 | RECORD OF SURVEY | 575 M 45-46 |
| R17 | PARCEL MAP | 628 M 45-46 |
| R18 | PARCEL MAP | 570 M 32-33 |
| R19 | LOT LINE ADJUSTMENT | 19591793 |
| R20 | MAP OF LOS ALAMOS ACRES | X M 28 |
| R21 | PARCEL MAP | 598 M 23-24 |
| R22 | PARCEL MAP | 549 M 5-6 |
| R23 | GRANT DEED | DOC. 24178425 |
| R24 | PARCEL MAP | 566 M 36 |
| R25 | GRANT DEED | DOC. 21328095 |
| R26 | RECORD OF SURVEY | 116 M 29 |
| R27 | PARCEL MAP | 463 M 37 |
| R28 | CORNER RECORD | CR118 CR5-2W |
| R29 | EASEMENT DEED | 5535 OR 286 |
| R30 | PARCEL MAP | 505 M 37-38 |
| R31 | RECORD OF SURVEY | 142 M 50 |
| R32 | PARCEL MAP | 608 M 20 |
| R33 | GRANT DEED | DOC. 25078800 |

LEGEND

| | |
|--|--|
| | ASPHALT BERM |
| | BUILDING LINE |
| | COMMUNICATION LINE |
| | CONCRETE/BLOCK WALL |
| | CONCRETE CURB |
| | CONCRETE CURB & GUTTER |
| | MAJOR CONTOUR LINE |
| | MINOR CONTOUR LINE |
| | DRIVEWAY |
| | EDGE OF PAVEMENT |
| | EDGE OF WATER/FLOWLINE |
| | EDGE OF ROCK |
| | ELECTRIC LINE |
| | FENCE LINE |
| | FIBER OPTICS LINE |
| | FIRE SERVICE LINE & VALVE |
| | GAS LINE-VALVE & METER |
| | GUARD RAIL |
| | IRRIGATION WATER LINE |
| | JOINT TRENCH LINE |
| | MONUMENT/MONUMENT LINE |
| | RETAINING WALL |
| | RECLAIMED WATER LINE & VALVE |
| | SANITARY SEWER LINE-MANHOLE & CLEANOUT |
| | SANITARY SEWER LINE OVER 24\"/> |
| | SIDEWALK |
| | SPOT ELEVATION |
| | STORM DRAIN LINE-MANHOLE & CATCH BASIN |
| | STORM DRAIN LINE-MANHOLE & CATCH BASIN |
| | STORM DRAIN LINE OVER 24\"/> |
| | STREET LIGHT CONDUIT LINE |
| | TELEPHONE LINE |
| | TRAFFIC SIGNAL CONDUIT LINE |
| | CABLE TELEVISION LINE |
| | UNKNOWN UTILITY LINE |
| | WATER LINE & VALVE |
| | WATER LINE OVER 24\"/> |
| | ACCESSIBLE PARKING SYMBOL |
| | ANODE |
| | AREA DRAIN |
| | AUTOMATIC SPRINKLER RISER |
| | BACKFLOW PREVENTION DEVICE |
| | BLOWOFF VALVE |
| | DOUBLE DETECTOR CHECK VALVE |
| | ELECTROLUER |
| | FIRE DEPARTMENT CONNECTION |
| | FIRE HYDRANT |
| | POST INDICATOR VALVE |
| | POWER POLE/JOINT POLE |
| | SURVEY CONTROL POINT |
| | TRANSFORMER |
| | TRAFFIC SIGNAL POLE |
| | TRAFFIC SIGN |
| | TREE |
| | UTILITY BOX |
| | WALK-BOLLARD LIGHT |
| | WATER VALVE |
| | WELL |

KIER+WRIGHT

3350 Scott Boulevard, Building 22
Santa Clara, California 95054
Phone: (408) 727-6665
www.kierwright.com

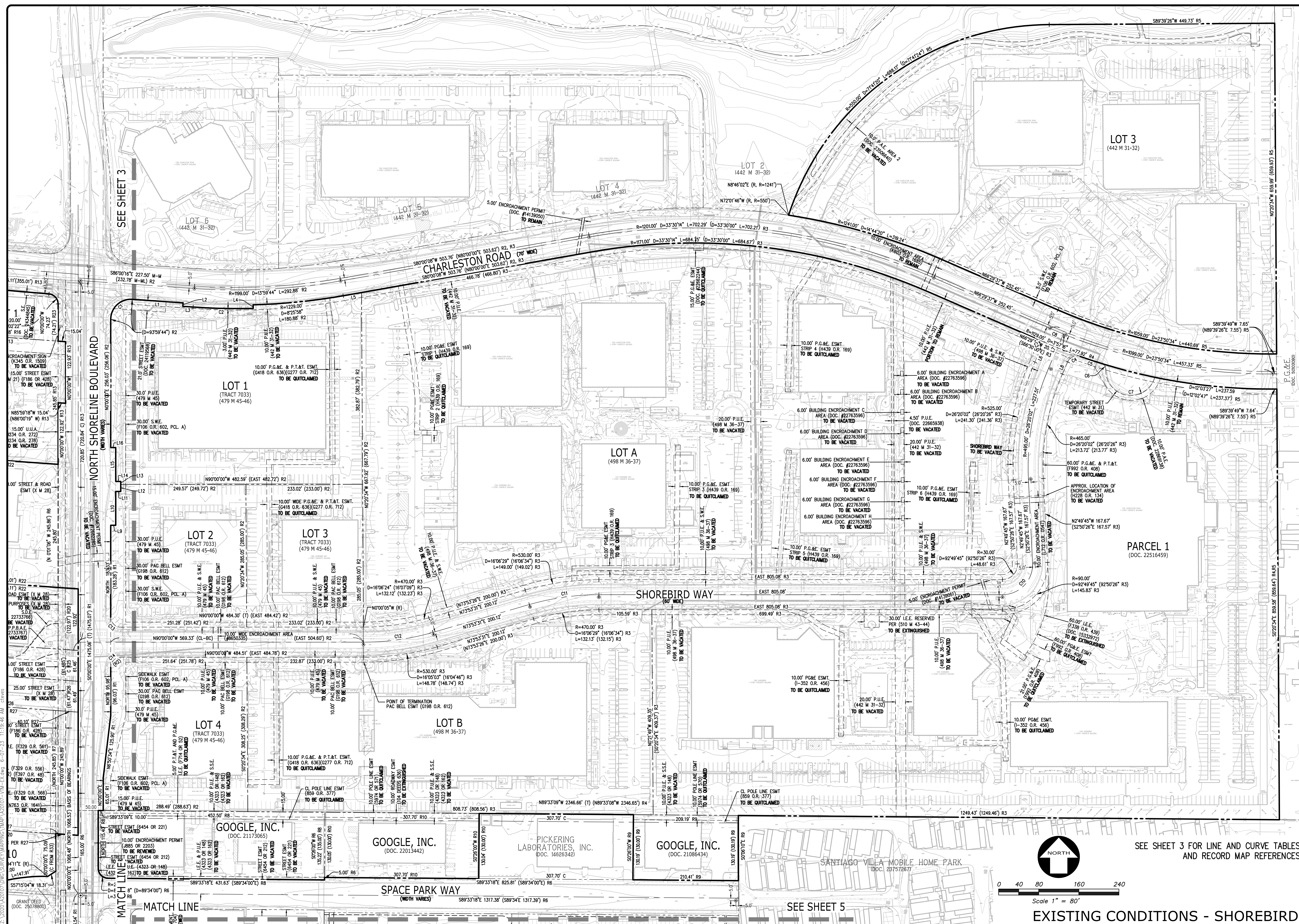
**NORTH BAYSHORE MASTER PLAN
VESTING TENTATIVE MAP**

FOR
GOOGLE LLC

MOUNTAIN VIEW,
CALIFORNIA

| | |
|----------|-------------|
| DATE | APRIL, 2023 |
| SCALE | AS SHOWN |
| SURVEYOR | RSII |
| DRAWN BY | CT |
| JOB NO. | A20107 |
| SHEET | 5 |
| OF | 16 SHEETS |

EXISTING CONDITIONS - PEAR



| REVISION | | BY | | NO. | |
|----------|--|----|--|-----|--|
| | | | | | |
| | | | | | |
| | | | | | |
| | | | | | |

| REVISION | | BY | | NO. | |
|----------|--|----|--|-----|--|
| | | | | | |
| | | | | | |
| | | | | | |
| | | | | | |

| | |
|----------|-------------|
| DATE | APRIL, 2023 |
| SCALE | AS SHOWN |
| SURVEYOR | RSII |
| DRAWN BY | CT |
| JOB NO. | A20107 |
| SHEET | 6 |
| OF | 16 SHEETS |

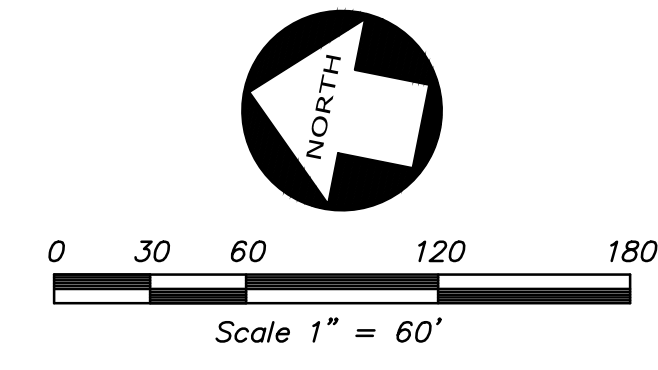
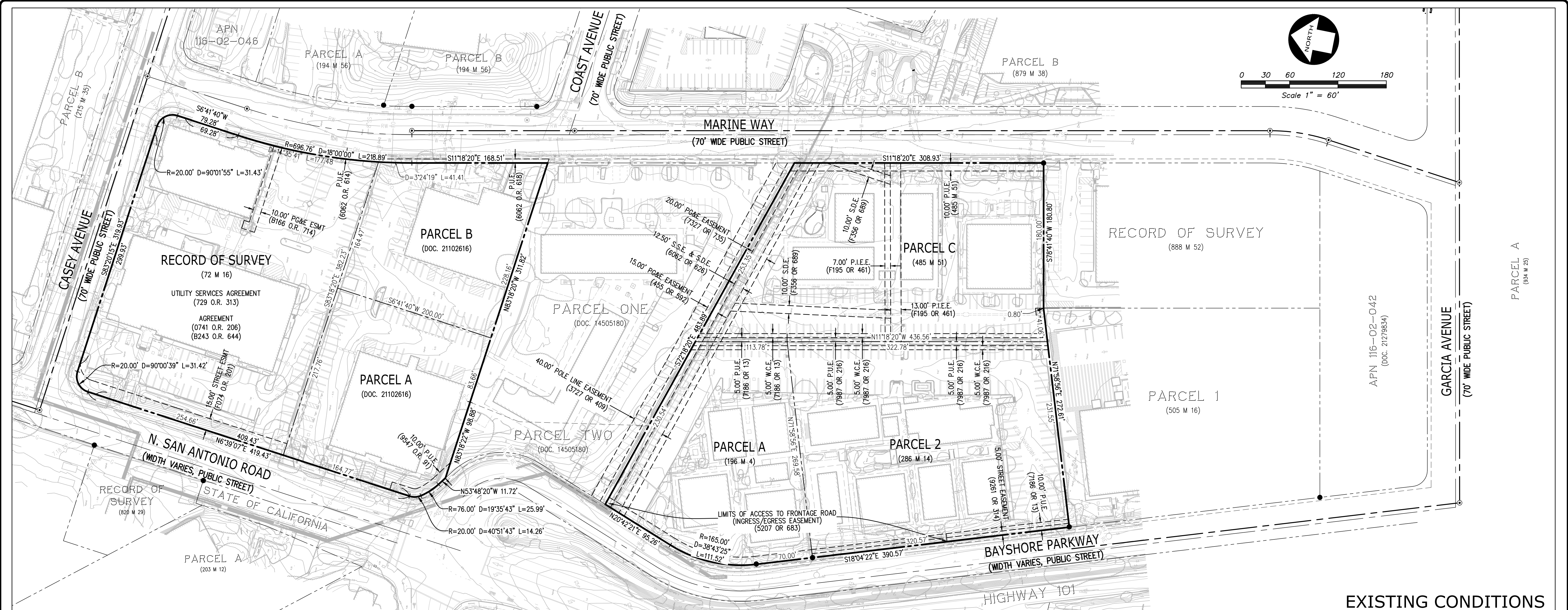
KIER+WRIGHT
 3550 Scott Boulevard, Building 22
 Santa Clara, California 95054
 Phone: (408) 727-6665
 www.kierwright.com

NORTH BAYSHORE MASTER PLAN
VESTING TENTATIVE MAP
 FOR
GOOGLE LLC
 MOUNTAIN VIEW,
 CALIFORNIA



Scale 1" = 80'

EXISTING CONDITIONS - SHOREBIRD



EXISTING CONDITIONS

C:\Users\ctreves\AppData\Local\Temp\1420107-X-A20107-SAC-MARINE.dwg 4-20-23 05:27:58 PM ctreves

| NORTH BAYSHORE MASTER PLAN VESTING TENTATIVE MAP FOR GOOGLE LLC MOUNTAIN VIEW, CALIFORNIA | | | | | | | | | | | | | |
|---|---|----------|----|----------|--|--|--|--|--|--|--|--|--|
| DATE APRIL, 2023 SCALE AS SHOWN SURVEYOR RSII DRAWN BY CT JOB NO. A20107 SHEET 7 OF 16 SHEETS | <table border="1" style="width: 100%; border-collapse: collapse;"> <tr> <th style="width: 10%;">NO.</th> <th style="width: 10%;">BY</th> <th style="width: 10%;">REVISION</th> </tr> <tr> <td> </td> <td> </td> <td> </td> </tr> <tr> <td> </td> <td> </td> <td> </td> </tr> <tr> <td> </td> <td> </td> <td> </td> </tr> </table> | NO. | BY | REVISION | | | | | | | | | |
| NO. | BY | REVISION | | | | | | | | | | | |
| | | | | | | | | | | | | | |
| | | | | | | | | | | | | | |
| | | | | | | | | | | | | | |