

Flynn, Allison

From: Rich Amlin <
Sent: Monday, June 10, 2024 5:47 PM
To: Parks and Recreation Commission
Subject: Pickle ball courts

CAUTION: EXTERNAL EMAIL - Ensure you trust this email before clicking on any links or attachments.

We are residents of the Cuesta Park neighborhood and are very opposed to any decrease in the green space at the Park. By the way, we did not see any request for input before the new exercise area was put in and in five years that will be a waste of money and space. We are adamantly opposed to the proposed pickle ball courts (unless they replace some existing tennis courts and SLIGHTLY encroach on the Annex.

Rich and Dawn Amlin
Nilda Ave.

Flynn, Allison

From: Veena Bhandarkar
Sent: Wednesday, June 12, 2024 12:32 PM
To: Parks and Recreation Commission
Subject: Re- Proposed pickleball courts at Cuesta park

CAUTION: EXTERNAL EMAIL - Ensure you trust this email before clicking on any links or attachments.

Hi,

As one of the residents who lives in the Cuesta Park neighborhood and particularly in close proximity of the park, I would like to comment on the construction of 12 new proposed pickleball courts.

For some context, my kids go to the park almost daily and also utilize tennis courts often. We also take our dog for a walk to the park everyday. As a family we have tried pickleball at other courts and it is a lot of fun and a great family activity.

However, the proposed new construction of pickleball courts and removal of greenscape to accommodate the new courts is very disconcerting and concerning to me.

Loss of precious green areas is a huge environmental concern, already the risk of wildfires in California has grown 1.4 times in the past decade alone. Why take out a good thing which every single resident young and old can enjoy and convert it to hardscape? It also will require additional parking spaces and is a noise hazard.

There are many alternatives to explore here to preserve what we have and allow for pickle ball playing. For instance,

1) Designate some days a week for tennis courts to double up as pickleball courts. Other cities Sunnyvale/Palo Alto have done this successfully.

2) There are so many office and retail spaces in Mountain view alone which have been unoccupied post pandemic. Since these are already hardscape consider moving the new pickleball facilities there.

Thinking creatively I am sure there are more solutions to be found. Please do not pass this proposal without carefully considering the impact.

Thank you
Veena

Flynn, Allison

From: Tom Carrubba <
Sent: Wednesday, June 12, 2024 1:39 PM
To: Parks and Recreation Commission
Cc: Laura Carrubba
Subject: Pickle Ball Courts at Cuesta Park

CAUTION: EXTERNAL EMAIL - Ensure you trust this email before clicking on any links or attachments.

Dear Parks and Recreation Commission,

We are MV residents living in the Cuesta Park neighborhood at Nilda Ave. We are writing to express our concerns about locating 12 permanent pickle ball courts at Cuesta Park or the Cuesta Park Annex. Our general concern is the loss of valuable greenscape in our cherished neighborhood park. More specifically we have concerns about the potentially significant negative impacts to wildlife, noise pollution, traffic (parking) and light pollution (if lights are proposed). We also have concerns about the appropriateness of one of the targeted areas, which is the designated off-leash "bowl" next to the tennis courts. As dog owners, we are concerned with the loss of this off-leash area. Additionally, the topography of this site would be expensive to build sports courts.

We wonder if any other sites in Mountain View have been considered for these pickleball courts, which may have less of an environmental impact, like in a part of the City which has more commercial zoning. It is also our hope that an environmental impact report be conducted on any proposed site in Cuesta Park.

Thank you for your consideration,

Tom & Laura Carrubba

Flynn, Allison

From: Jennifer Chue
Sent: Wednesday, June 12, 2024 3:43 PM
To: Parks and Recreation Commission
Subject: Pickle ball courts at Cuesta Park?

CAUTION: EXTERNAL EMAIL - Ensure you trust this email before clicking on any links or attachments.

To the Parks and Recreation Commission:

As a long time resident of the Cuesta Park neighborhood, I am astonished to learn that you are considering to add Pickleball courts to Cuesta park based on a survey response of 412 people, majority of who are pickle ball players. Currently, Cuesta park is a well-loved destination for Mountain View residents, non-residents as well as weekly corporate team events and so it's already very busy daily with weekends being even more so. The open green spaces are well used for various forms of recreation despite being overrun by gopher holes. The proposal to pave over any area of open green space in this park for a very specific activity (pickle ball) seems ill-thought out at best. If your commission is going to pave over green space, shouldn't it be a multi-use space where there could be basketball, volleyball or even 4-square be played as well?

Also, no where in the survey were there questions for other people who use the park to indicate how they would be impacted, not to mention the surrounding neighborhood. Has a traffic/parking study been conducted? What about a noise impact study? How would the sound affect the park users? As neighbors, we already hear the sporting events from St. Francis, some concerts from Shoreline and now potentially daily non-stop noise from 12 lighted pickle ball courts?

While I am happy to see more people becoming active and playing outdoors, paving over green space in an already busy and at times, congested park seems short-sighted. The City must own lands that are currently underutilized parking lots that can repurposed instead of paving over existing park land.

At a minimum, I would hope that the appropriate sound, parking and traffic studies were conducted first, and presented, before open green space is paved over for a very select activity and group of people.

Sincerely,

Jennifer Chue
Leona Lane

Flynn, Allison

From: Sylvia Emery
Sent: Tuesday, June 11, 2024 9:58 PM
To: Parks and Recreation Commission
Subject: Pickleball in Cuesta Park

CAUTION: EXTERNAL EMAIL - Ensure you trust this email before clicking on any links or attachments.

Hello,

My husband, daughter and I are against the City of Mountain View's proposal to build pickleball courts at Cuesta Park.

My husband and I walk there every evening and even late in the day the parking lots are often crowded. I am visually impaired and cannot walk at Cuesta Park during the peak daylight hours because I cannot see well enough to maneuver around all the happy groups of people walking, playing, riding and often just chatting on the walkways. The park is already at capacity.

There are scout meetings, youth running groups, volleyball games, corporate parties, exercise and photography classes, crafting classes, picnic groups, couples on dates, many people like me who walk for health and appreciate being able to walk where there isn't vehicle traffic, and this spring there has been a huge upswing in birding groups to see the splendid young Great Horned Owlets who were born and fledged at the park.

Plus the tennis players -- many of whom drive to the park. And the dog owners, who often number in the dozens at any one time in the day.

The light pollution from the tennis courts is rather awful, but the courts are used a LOT and at least the little clubhouse and trees block some of the light from the neighborhood. Pickleball courts will involve more lighting and more fencing and more hardscape -- that's not what Mountain View needs, and it's definitely not what the owls and Cuesta Park neighborhood residents want.

I am concerned also that the park is already very noisy and adding another set of courts will add to that. We lost some big trees in the winter storms and for those of us who use the park daily it's obvious how much those missing trees used to damp the noise.

Mountain View just added another hardscaped exercise machine area over by the Y. We really need to preserve green spaces in our city and not add more hardscape, especially to an established park where families have been enjoying the lawns for years. The area being considered is the only good spot to play frisbee at Cuesta Park, and it is also very popular with parents teaching their very young children how to walk and then run because it is safe to fall on the grass and it's so nice and flat.

The large lawn next to Grant Road has been very poorly managed and maintained, and now appears to be under renovation but it's not being done very well. If Mountain View wants to spend money on the parks, please focus on improving the existing green areas instead of building more hardscape.

Thank you very much,

Sylvia Emery on Bonita

Flynn, Allison

From: Sue Hoopes
Sent: Wednesday, June 12, 2024 2:18 PM
To: Parks and Recreation Commission
Subject: Pickleball Courts at Cuesta??

CAUTION: EXTERNAL EMAIL - Ensure you trust this email before clicking on any links or attachments.

Good Afternoon,

As a resident of the Cuesta Park Neighborhood I have become aware of plans by the City to build pickleball courts at Cuesta Park. Pickleball is definitely popular and I am not surprised to see there is a plan, however I must express my amazement to hear that the current plans for Cuesta Park include tearing up green space!! The two locations I have heard of:

- open grass area next to the parking lot in front of the tennis courts.
- the "dog bowl" area next to the tennis courts.

What a shame it would be to pull the grass out for asphalt/ concrete! This area has a high use for sports, family gatherings and just a spot for a quiet moment!!!! Has the City considered the potential congestion placing the courts here? The parking lot is already congested!!!

Ahhhh the dog bowl..... again this still tears up grass, I would hope the trees would stay? Positives with this location is the proximity to the tennis courts and the office who I assume would be overseeing the pickleball courts???? If the new courts go in this location what is the plan for a dog par on this side of town???? The annex is sitting there (yes I know there is drama around the annex), the City could consider this area for a decent dog park. The City also needs to take a look at cities in Southern California for design of dog parks, there is nothing special about the one at Shoreline!

The City might want to take a chapter from PA's playbook...take a look at the soccer field at the corner of El Camino and Page Mill, soccer fields with greenery around, a nice vision in the middle of buildings, the old Chevy's lot/liquor store has been sitting for awhile, already pavement there 😊

My last comment is about the money. A few weekends ago I filled out a survey asking MV residents to prioritize City services including safety, amazing as that was it is hard to hear about 4.6mil for pickleball courts when finances are projected to be tight in the future. I suspect the \$\$\$ has been allocated for awhile however the visual of spending on pickleball courts versus dealing with basic services is there.

Thanks for letting me share, Sue Hoopes

Sent from my iPhone

Flynn, Allison

From: William Lambert
Sent: Tuesday, June 11, 2024 4:54 PM
To: Parks and Recreation Commission
Subject: Comments for Agenda Item 6.2; Jun-12-2024 Meeting
Attachments: Comments PRC Agenda Item 6.2 Jun-12-2024 Meeting.docx

CAUTION: EXTERNAL EMAIL - Ensure you trust this email before clicking on any links or attachments.

PRC Chair Sommer and Commissioners,
Please refer to my attached comments for Agenda Item 6.2 on the Jan-12-2024 Meeting.

Unfortunately, I will not be able to attend due to another commitment.

Bill

[William Lambert](#) | Partner

| [Bio](#)

SheppardMullin

Menlo Park, CA 94025-4111

www.sheppardmullin.com | [LinkedIn](#) | [Twitter](#)

Attention: This message is sent by a law firm and may contain information that is privileged or confidential. If you received this transmission in error, please notify the sender by reply e-mail and delete the message and any attachments.

June 11, 2024

**City of Mountain View
Parks and Recreation Commission and Urban Forestry Board
Meeting on Wednesday, June 12, 2024**

Agenda Item 6.2 Pickleball Court, Project 23-36-Draft Preliminary Study Findings

Chair Sandy Sommer and Commissioners:

(Due to a previous commitment I am unable to attend the PRC Meeting.)

STOP !

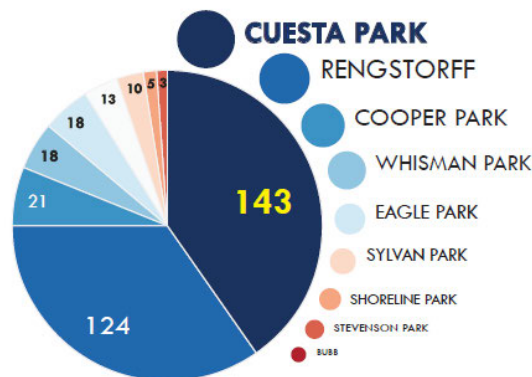
At some point we must have a city-wide moratorium on building on existing green space.

As stewards of our parks and open space we are expecting the Parks and Recreation Department to expand the opportunities for everyone in our community to enjoy the benefits of parks and open space. That includes purchasing properties that can be converted into parks as well as preserving what little park space we have.

We should not ever accept paving over existing park and open space as being a solution.

It is apparent that in developing a plan to provide pickleball courts to residents of Mountain View, the only plan was to pave over existing park space. No other alternatives appear to have ever been considered. For example, Question 13 asks at what parks in Mountain View would you like to see have new dedicated pickle ball courts, and Question 14 asks what factors led you to choose the park.

Q13 **WHAT LOCATIONS** within the City of Mountain View (City-owned parks, land, etc.) **WOULD YOU LIKE TO SEE** new dedicated **PICKLEBALL COURTS** installed?



Q14

Elaborate on the **FACTORS THAT LED YOU TO CHOOSE THE #1 LOCATION** as your preferred option.

+ This is an open-ended follow-up question to previous one to gather additional information.

+ For **CUESTA PARK** the main reasons were *ADEQUATE SPACE, LOCATION, DISTANCE FROM RESIDENTS (NOISE), EXISTING INFRASTRUCTURE, & PARKING.*

+ For **RENGSTORFF PARK** the main reasons were *EXISTING PICKLEBALL COMMUNITY USING THIS PARK, LOCATION, PARKING, SPACE AND EXISTING/FUTURE FACILITIES.*

+ For **SYLVAN PARK** the main reasons were *LOCATION, SPACE, EXISTING TENNIS COURTS, FACILITIES.*

It is apparent that the staff never consider any other option but to build on existing park space.

A pickleball court has an area of 880 square feet (44×20, the same as a badminton court).

The area the city is proposing to build any where from 12 to 18 pickle ball courts that will cover with amenities up to about 2 acres.

The cost including the planning will come to at least \$9,000,000. This is a lot of money.

First, the city must stop building on existing park and open space. The city will never reach its sustainability and urban forestry goals if park and open space is paved over.

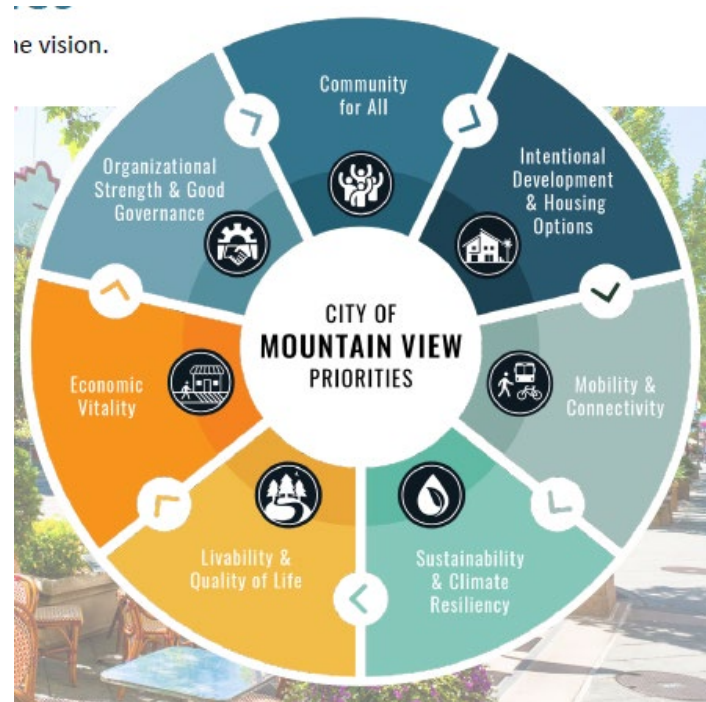
Second, the city should look for other options rather to locate pickleball courts that do not require use of existing park space. As a city we need to be expanding park space and not diminishing it.

Third, there is currently no serious funding mechanism for purchasing any significant new park and open space. What little money there is should be used to acquire land in north Mountain View where the ratio of walkable and accessible public parks to residents is very low.

We have many needs in Mountain View and our public infrastructure has been stressed by the increased residential and commercial growth without adequate attention to increasing the park and open space.

Building on existing parks and open space is inconsistent with the Strategic Priorities of the City. The Park and Recreation Department should find an alternative.

Spending this much money on improvements and not on purchase new park space for those who have no access to walkable park and open space is irresponsible and also inconsistent with the Strategic Priorities of the City. The Park and Recreation Department should reconsider the priorities.



Bill Lambert
Mountain View Resident
Monta Loma Neighborhood

Flynn, Allison

From: Page McDonald
Sent: Wednesday, June 12, 2024 7:47 AM
To: Parks and Recreation Commission
Subject: Pickleball in Cuesta Park

CAUTION: EXTERNAL EMAIL - Ensure you trust this email before clicking on any links or attachments.

Hello,

I am writing to express concerns about the proposed 12 pickleball courts in Cuesta Park. I think the City should look for an alternate site.

The twelve courts would replace green space with hard scape. We cannot afford to do that as a city with limited green space. The park is a refuge from the heat and the noise of the city.

Pickleball is loud. Very loud. The park is shared between people and wild animals such as hawks and owls, who might abandon the area because of the noise pollution.

There isn't enough parking at the park to accommodate 12 pickleball courts if they are in full use.

Who is to say that pickleball will be as popular as it is now in five or ten years? It's a big fad right now, but its popularity might wane in the future. Some other sport will become the big thing, and then you've lost the green space and have 12 relatively unused courts.

Why not research an indoor solution? Many cities and private groups are taking advantage of empty big box stores and building huge pickleball complexes, with upwards of 30 courts. The noise doesn't bother anyone, the players stay out of the sun, and they often have a store and socializing area. Plus parking!

Keep our remaining green space green and quiet. Please look for an alternate site for pickleball.

Page McDonald
Lola Lane

Flynn, Allison

From: Kimberly Merry
Sent: Wednesday, June 12, 2024 8:36 AM
To: Parks and Recreation Commission
Subject: Pickleball Courts in Cuesta Park

CAUTION: EXTERNAL EMAIL - Ensure you trust this email before clicking on any links or attachments.

Please don't add additional pavement to Cuesta or any other park. It seems to me that we are constantly struggling to find ways to add parks in MV. These new pocket parks are getting smaller and smaller. Let's not pave over any more of our big and beautiful parks. You just paved over the back section of Cuesta for something. There must be another solution. Yes, pickleball is popular right now but for how long? Are dedicated courts really necessary? Is it possible to share blacktop areas with the schools or possibly time/space with tennis courts? If it's really not possible to find a spot that can be reallocated to mixed use / sharing, please find a location that is already paved and build courts there.

Kim Merry
Begen Avenue
Mountain View

Sent from my iPad

Flynn, Allison

From: John Moynihan
Sent: Wednesday, June 12, 2024 10:46 AM
To: Parks and Recreation Commission
Subject: Pickleball in Cuesta Park - NO!

CAUTION: EXTERNAL EMAIL - Ensure you trust this email before clicking on any links or attachments.

I am writing to you to object most strenuously to the proposal.

Frankly, in a time of global warming when every square inch of greenery is precious, the fact that you are even considering paving over a large proportion of a popular neighborhood park is little short of obscene.

Notwithstanding the above, the pop-pop-pop noise from the courts and the constant cruising for parking on the local streets will have a deleterious effect on the quality of life and property values.

You need to go back to square 1 with this and find an alternate solution.

Yours sincerely,

John Moynihan.
Nilda Avenue.

Flynn, Allison

Subject: FW: Written Comment on Pickleball Court Project

Dear Commissioner Sommer,

I'd like to put in a written comment for the "Pickleball Court, Project 23-36-Draft Preliminary Study Findings" agenda item at today's Parks and Rec Commission meeting.

I am surprised and disappointed that the proposal for the pickleball courts site will involve the removal of green space at Cuesta Park at a cost of \$4.6 million. Cuesta Park is already only 40% green space. Why did the proposal not consider all the paved spaces in Cuesta Park or other Mountain View locations? Not only would this preserve the little green space we have, it would also be a lot less expensive. It seems very irresponsible to spend such a large amount of tax-payer dollars, especially when the city is facing budget cuts in future years.

I am also disappointed that the outreach for this project mainly engaged the groups that are pushing for more court space (e.g. The Mountain View Pickleball Club, Mountain View Tennis Club, Mountain View Tennis Academy, and Tennis Advisory Board). As a result, a small minority in Mountain View is being invited to provide input that affects many other park users. Cuesta Park is one of the few spaces in Mountain View where there is enough green space and enough shade that park users can really spread out and enjoy some solitude. Building out the pickleball courts in this green space would certainly infringe upon that, especially because the off-leash dog area will have to be moved.

As a Mountain View resident and a member of GreenSpaces MV, I ask you to please consider an alternate location for the pickleball courts. For example, a portion of the parking lot next to the tennis courts and the Cuesta Park Annex could be utilized. This parking area is never full and only usually at 20-30% capacity. Whole rows of parking spaces are usually empty, so taking away two rows for pickleball courts would not have much of an impact on parking. Additionally, the project would be much cheaper because it would mainly require resurfacing as opposed to regrading.

I'll also be planning on speaking on this issue at the Parks and Rec meeting this evening.

Thanks for your consideration.

Sincerely,
Rashmi Sahai
Villa St.

Flynn, Allison

From: David Shreni
Sent: Tuesday, June 11, 2024 9:23 PM
To: Parks and Recreation Commission
Subject: I changed my mind on the Pickleball courts

CAUTION: EXTERNAL EMAIL - Ensure you trust this email before clicking on any links or attachments.

I told my 6yr old son over dinner about the plan to put pickleball courts in his beloved Cuesta Park, and his response bowled me over:

"Why is the city paving over our park? We don't have a backyard...and I like the grassy areas."

I didn't have a good answer. And any answers I have thought of are underwhelming. I chatted with my neighbors. They had no good answers.

The fact is, a small group of individuals want to convert our city's very limited greenspace into concrete...forever? This decision, if made, will not only affect my son's generation but also the generations to come, and it's a responsibility we all share.

Then I started digging more into this committee's work and saw Mr. Lambert's presentation to you in the last meeting. The city has 50 acres alone of parking lots at Shoreline and endless parking lots elsewhere, just in its parks, let alone elsewhere in the city.

And we spend millions of dollars buying greenspace.... to turn around and pave it over somewhere else in the city.

This makes no sense. The pickleball courts need about .7 acres for all their proposed courts by my math. That's a lot of grassland to take up, in fact \$7 MILLION dollars worth of land. (land is \$10MM an acre these days). This is not just about the cost, it's about the irreversible damage to our environment and the loss of a natural space for our community.

Is this the best use of our remaining grassy area? Must we program every last inch? The park just paved over a grassy section for exercise. Must we pave over more of our park?

I hope you can find a better solution. Sometimes the cheapest solution is not the best in the long-run, even if the pickleballers have to wait. The city is spending \$15 million dollars to build a small gun range for the police...on top of a garage, in the middle of downtown. That's a creative way to find space! I believe there's a solution that can meet everyone's needs without compromising our greenspace.

This committee fights so hard to save Heritage trees across the city, but unfortunately, it has to let more be cut down than planted. We planted just 80 trees last year! Surely, we can be smarter about laying half an acre of concrete down.

Please find a better alternative to our local park. My child has convinced me that his kids want to play there, too.

David Shreni
Cuesta Park Resident
Cuesta Park daily user

Administration:

1. Number of open space acres per 1,000/population:
Including North Bayshore Area
Excluding North Bayshore Area

Center for the Performing Arts:

2. Number of use days^(B)
3. Number of performances
4. Percentage of clients surveyed who rate the theatre experience as “very good” or “outstanding”
5. Percentage of patrons surveyed who say they enjoyed their experience at the MVCPA

Shoreline:

6. Number of Rengstorff House rentals

Shoreline Golf Links:

7. Number of paid rounds of golf
8. Number of tournament rounds
9. Number of memberships

Flynn, Allison

Subject: FW: Support for additional pickleball courts

From: Kathleen Stukenborg

Sent: Tuesday, June 11, 2024 8:55 PM

To: City Council <City.Council@mountainview.gov>

Subject: Support for additional pickleball courts

CAUTION: EXTERNAL EMAIL - Ensure you trust this email before clicking on any links or attachments.

I live at AppleTree Lane, Mountain View CA 94040. My family likes to play pickleball and would love to see additional pickleball courts in Mountain View and specifically at Cuesta Park. It is such a large park, that I feel there is safe to add the pickleball courts while still maintaining ample space for other activities.

Thank you,

Kathleen Stukenborg.

Flynn, Allison

From: Deb Tobin
Sent: Tuesday, June 11, 2024 10:30 PM
To: Parks and Recreation Commission
Subject: Pickleball courts at Cuesta

CAUTION: EXTERNAL EMAIL - Ensure you trust this email before clicking on any links or attachments.

Dear Council,

I can't believe you are considering Cuesta Park as a place for Pickleball Courts. If you ever use this park or walk through it during the day or night, you know what a gem it is for our city. It is a peaceful and tranquil city space that many people use every day. This park is one of the reasons we bought our house in the Cuesta park neighborhood 30 years ago. Respectfully, do not let the picketball bullies negatively impact our beautiful park and quiet and peaceful neighborhood. Please find concrete space that is vacant and not utilized rather than the beautiful green space in Cuesta Park that raised a family of three great horned baby owls last summer. I drive down ElCamino and see many vacant lots that are unappealing and an embarrassment to our beautiful community, couldn't these be an option for picketball courts.

Respectfully,

Deb and Jeff Tobin

Leona Lane, MV

Sent from my iPhone