

Senate Bill 1214 now requires the City to gain consent from the project architect to post the full set of project plans online. The project architect of this project has not given the City their consent and has only provided consent for a limited plan package (i.e. site plan, original massing diagram, elevations, floors plans and wall sections) to be posted on the City website for public viewing. The full set of plans and copies of all associated project documents are available for review at the Community Development Department, 500 Castro Street, First Floor, Mountain View, CA, 94041 or may be made available by contacting the project planner.

HOPE DANA LP

705 W. DANA STREET
MOUNTAIN VIEW, CA

THE
**Guzzardo
Partnership, INC.**
Landscape Architects | Land Planners
Pier 9, The Embarcadero, Suite 115
San Francisco, CA 94111 | www.tgp-inc.com

ISSUES AND REVISIONS

NO.	DATE	DESCRIPTION
10.04.2019		PLANNING SUBMITTAL
06.25.2021		PLANNING SUBMITTAL
08.13.2021		PLANNING SUBMITTAL #1
01.28.2022		PLANNING SUBMITTAL #2
05.20.2022		PLANNING SUBMITTAL #3
10.28.2022		PLANNING RESUB #3 / NEW SUB
01.27.2023		PLANNING RESUB #4
07.21.2023		PLANNING RESUBMITTAL#5

PROJECT NUMBER
18028.00

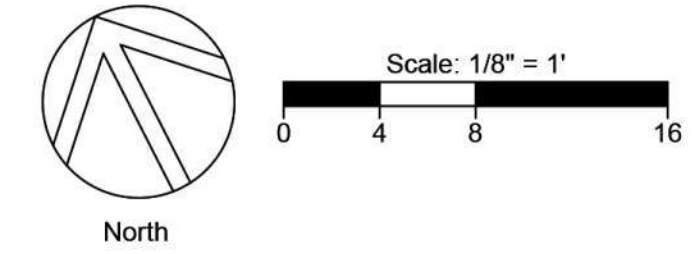
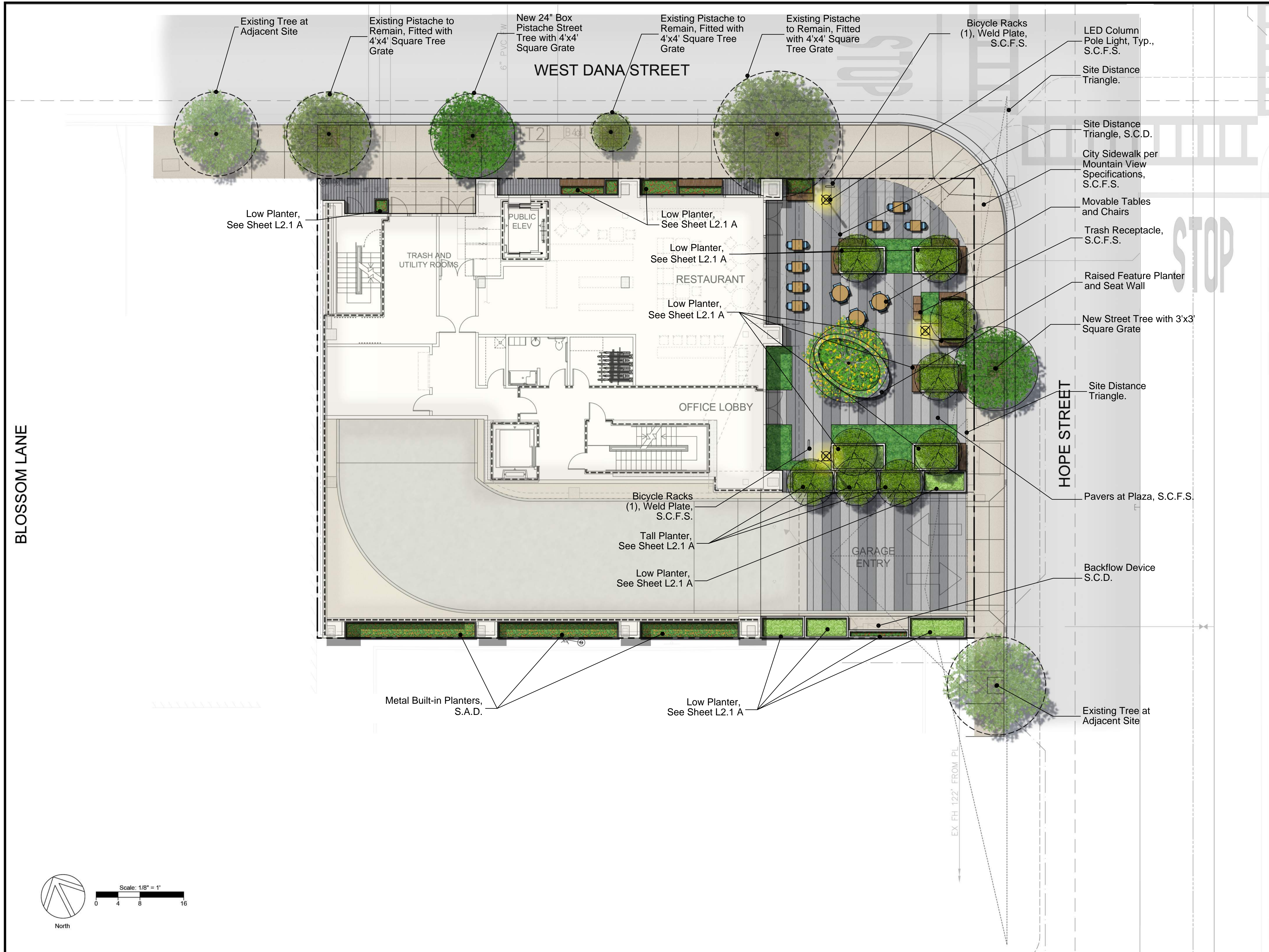
SHEET TITLE

LANDSCAPE MATERIAL PLAN

SCALE
1/8" = 1'-0"

SHEET NUMBER

L-2.1



ALL DRAWINGS AND WRITTEN MATERIAL APPEARING HEREIN CONSTITUTE ORIGINAL AND UNPUBLISHED WORK OF THE ARCHITECT AND MAY NOT BE DUPLICATED, USED OR DISCLOSED WITHOUT WRITTEN CONSENT OF THE ARCHITECT



ARCHITECTS
KORTH SUNSERI HAGEY



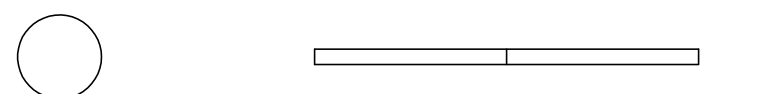
ISSUES AND REVISIONS

NO.	DATE	DESCRIPTION
10.04.2019		PLANNING SUBMITTAL
08.13.2021		PLANNING RESUBMITTAL #1
01.28.2022		PLANNING RESUBMITTAL #2
10.28.2022		PLANNING RESUBMITTAL #3
01.27.2023		PLANNING RESUBMITTAL #4
07.21.2023		PLANNING RESUBMITTAL #5

PROJECT NUMBER
18028.00

SHEET TITLE
**RENDERED PERSPECTIVE
VIEW FROM CORNER OF HOPE & W.DANA ST**

SCALE



SHEET NUMBER

R2



ARCHITECTS
KORTH SUNSERI HAGEY



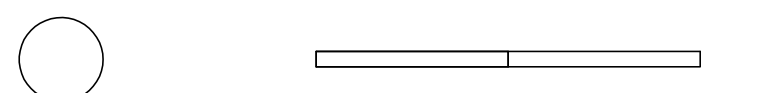
ISSUES AND REVISIONS

NO.	DATE	DESCRIPTION
	10.04.2019	PLANNING SUBMITTAL
	08.13.2021	PLANNING RESUBMITTAL #1
	01.28.2022	PLANNING RESUBMITTAL #2
	10.28.2022	PLANNING RESUBMITTAL #3
	01.27.2023	PLANNING RESUBMITTAL #4
	07.21.2023	PLANNING RESUBMITTAL #5

PROJECT NUMBER
18028.00

SHEET TITLE
**RENDERED PERSPECTIVE
VIEW FROM HOPE ST**

SCALE



SHEET NUMBER



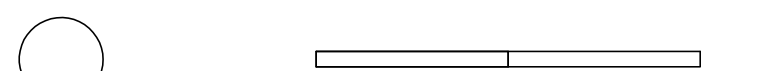
ISSUES AND REVISIONS

NO.	DATE	DESCRIPTION
10.04.2019		PLANNING SUBMITTAL
08.13.2021		PLANNING RESUBMITTAL #1
01.28.2022		PLANNING RESUBMITTAL #2
10.28.2022		PLANNING RESUBMITTAL #3
01.27.2023		PLANNING RESUBMITTAL #4
07.21.2023		PLANNING RESUBMITTAL #5

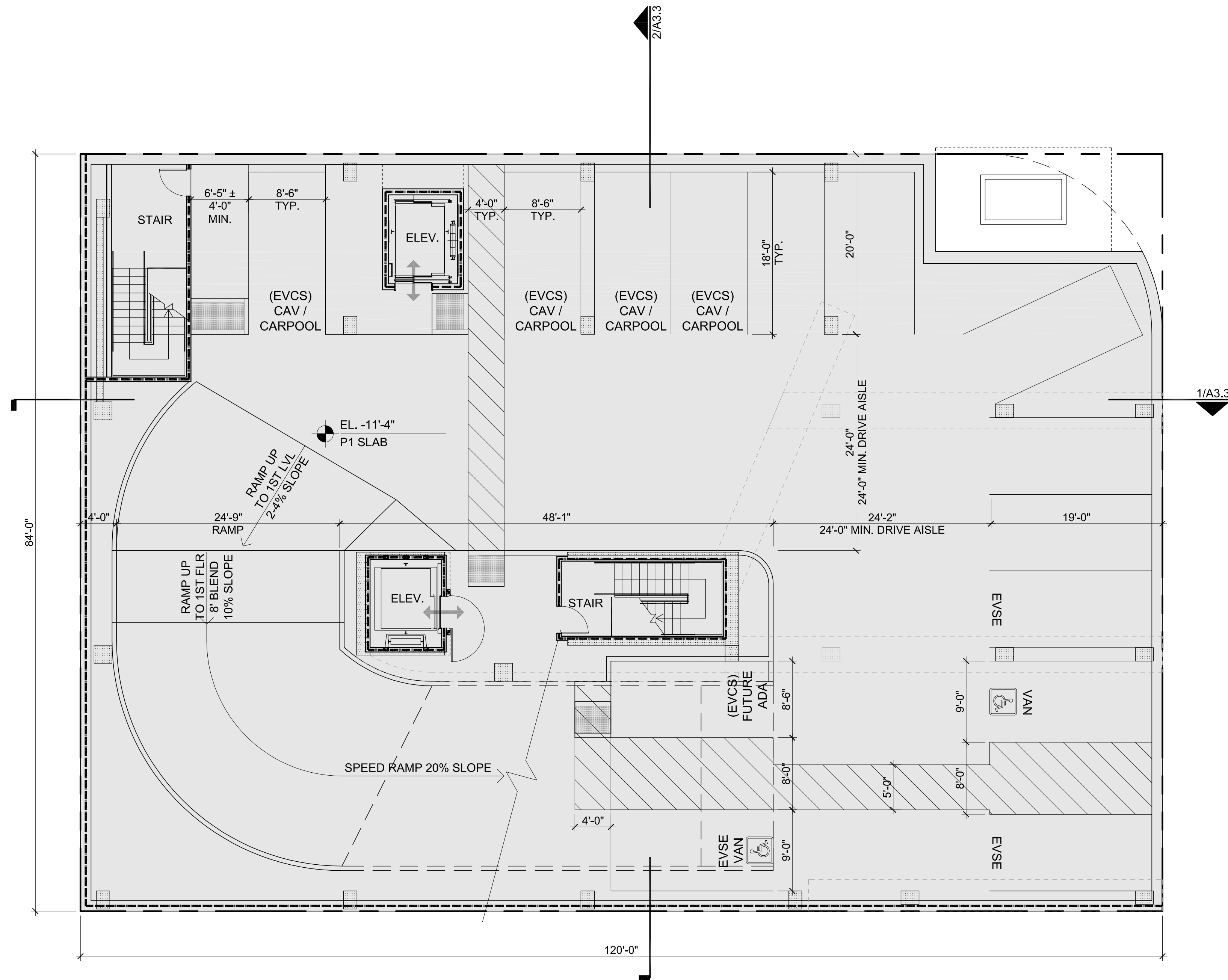
PROJECT NUMBER
18028.00

SHEET TITLE
**RENDERED PERSPECTIVE
VIEW FROM W.DANA ST**

SCALE



SHEET NUMBER

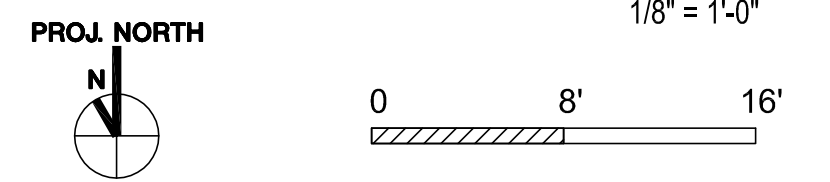


ISSUES AND REVISIONS		
NO.	DATE	DESCRIPTION
	10.04.2019	PLANNING SUBMITTAL
	08.13.2021	PLANNING RESUBMITTAL #1
	01.28.2022	PLANNING RESUBMITTAL #2
	10.28.2022	PLANNING RESUB. #3 / NEW SUB.
	01.27.2023	PLANNING RESUB. #4
	07.21.2023	PLANNING RESUB. #5

PROJECT NUMBER
18028.00

SHEET TITLE
P1 PARKING PLAN

SCALE
1/8" = 1'-0"



SHEET NUMBER

P1 LEVEL (13 TOTAL STALLS)
 1 (VAN) ADA (FOR 1-25 TOTAL STALLS. PER CBC T11B-208.2, 11B-208.2.4)
 8 EVCS CHARGING STALLS (PER MVCC TABLES 101.10 & A5.106.5.3.2 FOR 10-25 TOTAL STALLS)
 3 DAY 1 EVSE STALLS INCLUDING 1 LEVEL 3 FAST CHARGER + 1 VAN ADA EVSE (MIN. REQ. FOR 1-4 EVSE PER CBC T 11B-228.3.2.1)
 5 FUTURE EVSE (EVCS) STALLS INCLUDING 1 ADA EVCS + 4 CAV / CARPOOL EVCS (PER CGC TABLE A5.106.5.1.2 FOR 10-25 TOTAL STALLS)
 4 STD STALLS

A2.P1



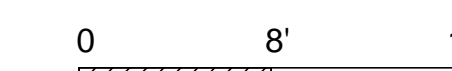
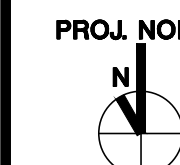
ARCHITECTS
KORTH SUNSERI HAGEY

ISSUES AND REVISIONS		
NO.	DATE	DESCRIPTION
10.04.2019		PLANNING SUBMITTAL
08.13.2021		PLANNING RESUBMITTAL #1
01.28.2022		PLANNING RESUBMITTAL #2
10.28.2022		PLANNING RESUB.#3 / NEW SUB.
01.27.2023		PLANNING RESUB.#4
07.21.2023		PLANNING RESUB.#5

PROJECT NUMBER
18028.00

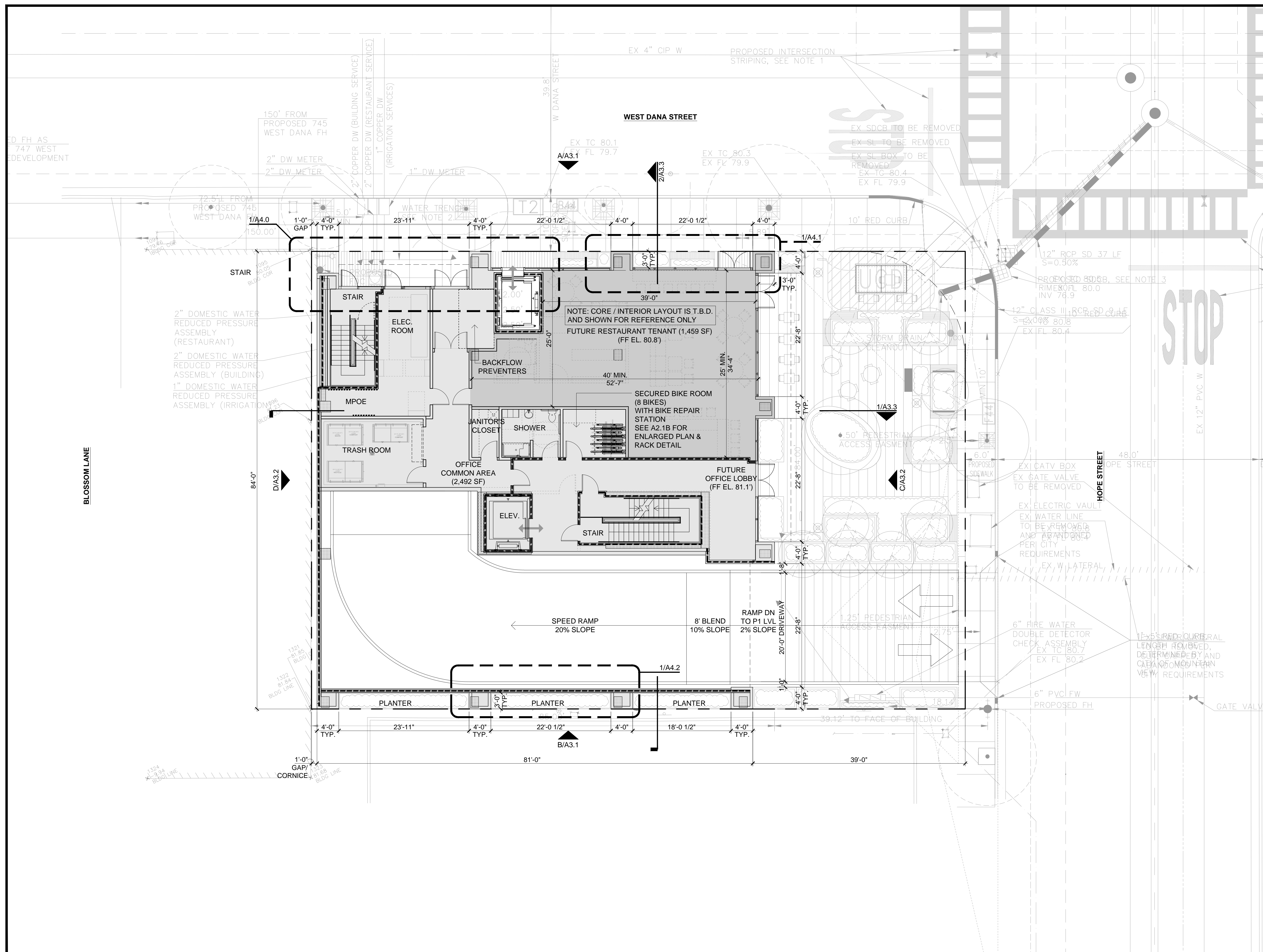
SHEET TITLE
FIRST FLOOR PLAN

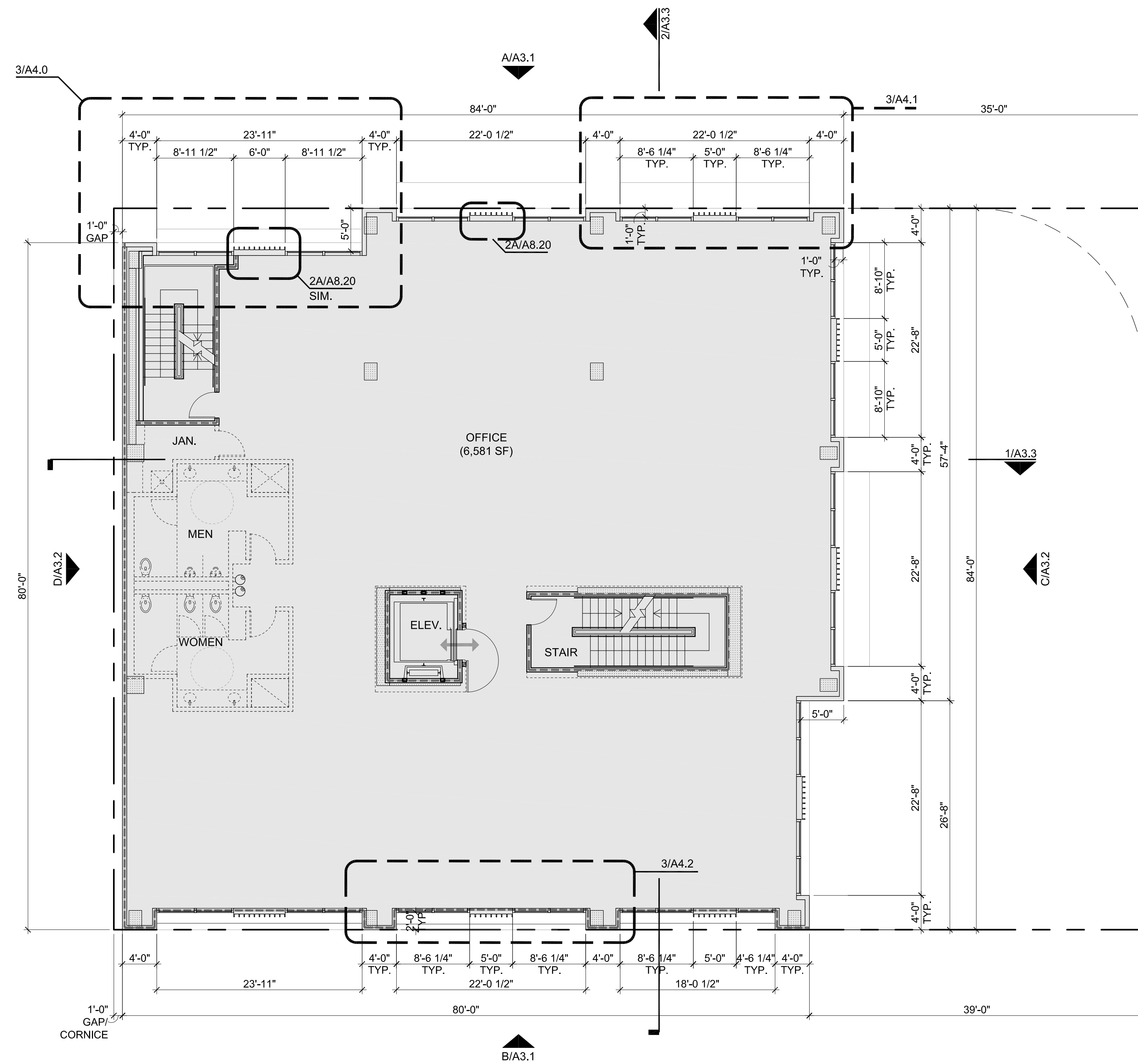
SCALE
1/8" = 1'-0"



SHEET NUMBER

A2.1

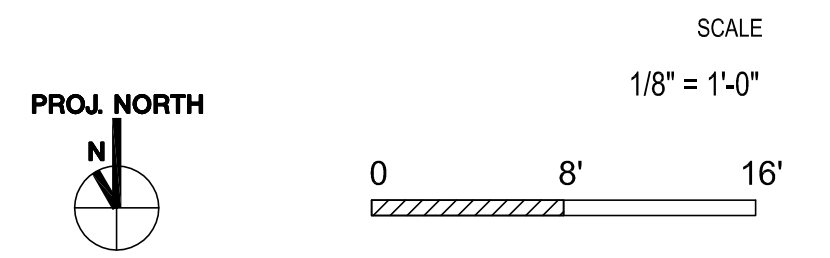




ISSUES AND REVISIONS		
NO.	DATE	DESCRIPTION
10.04.2019		PLANNING SUBMITTAL
08.13.2021		PLANNING RESUBMITTAL #1
01.28.2022		PLANNING RESUBMITTAL #2
10.28.2022		PLANNING RESUB. #3 / NEW SUB.
01.27.2023		PLANNING RESUB. #4
07.21.2023		PLANNING RESUB. #5

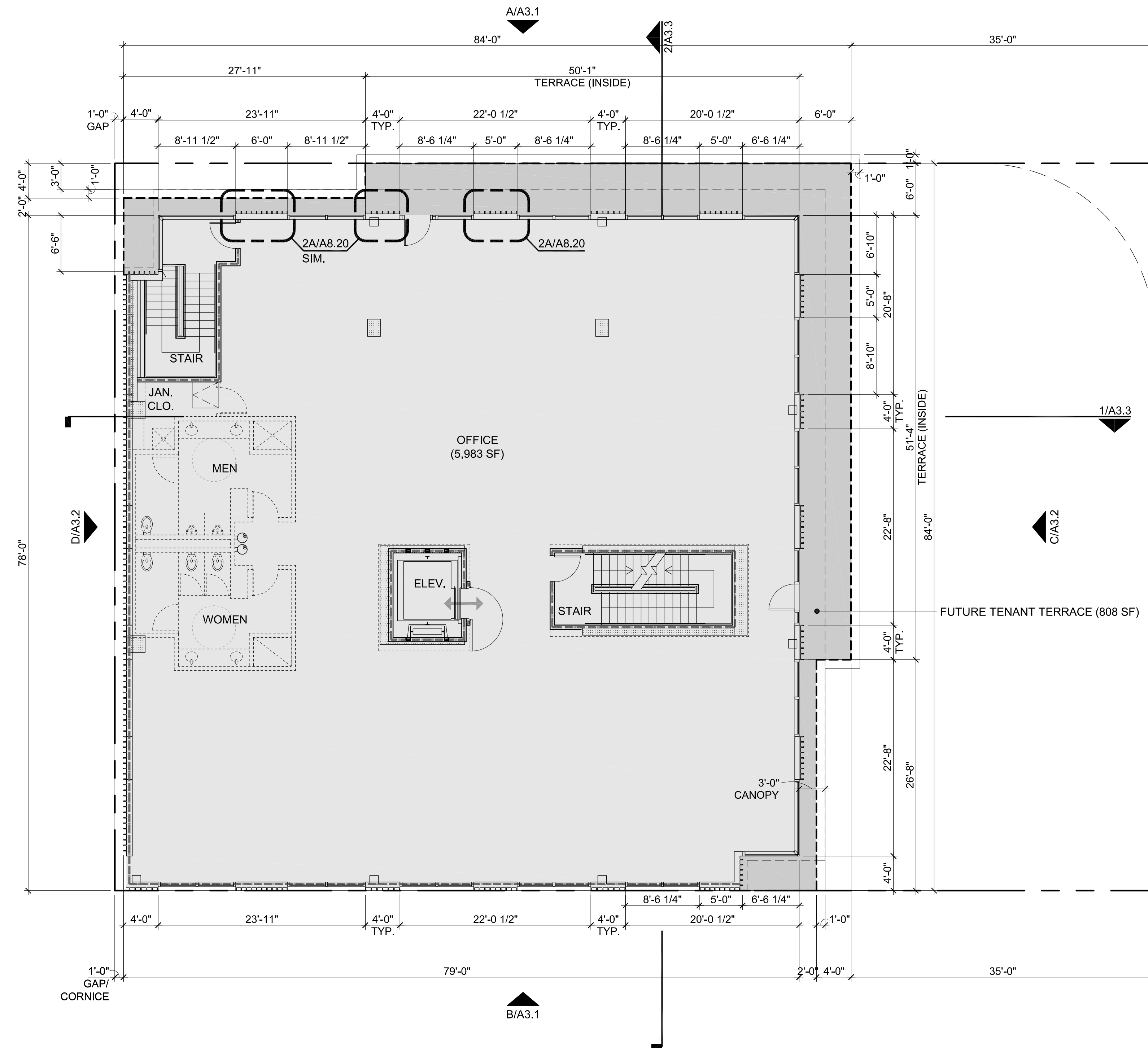
PROJECT NUMBER
18028.00

SHEET TITLE
SECOND FLOOR PLAN



SHEET NUMBER

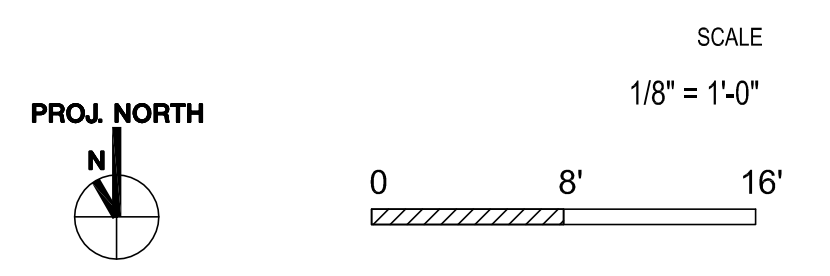
A2.2



ISSUES AND REVISIONS		
NO.	DATE	DESCRIPTION
10.04.2019		PLANNING SUBMITTAL
08.13.2021		PLANNING RESUBMITTAL #1
01.28.2022		PLANNING RESUBMITTAL #2
10.28.2022		PLANNING RESUB. #3 / NEW SUB.
01.27.2023		PLANNING RESUB. #4
07.21.2023		PLANNING RESUB. #5

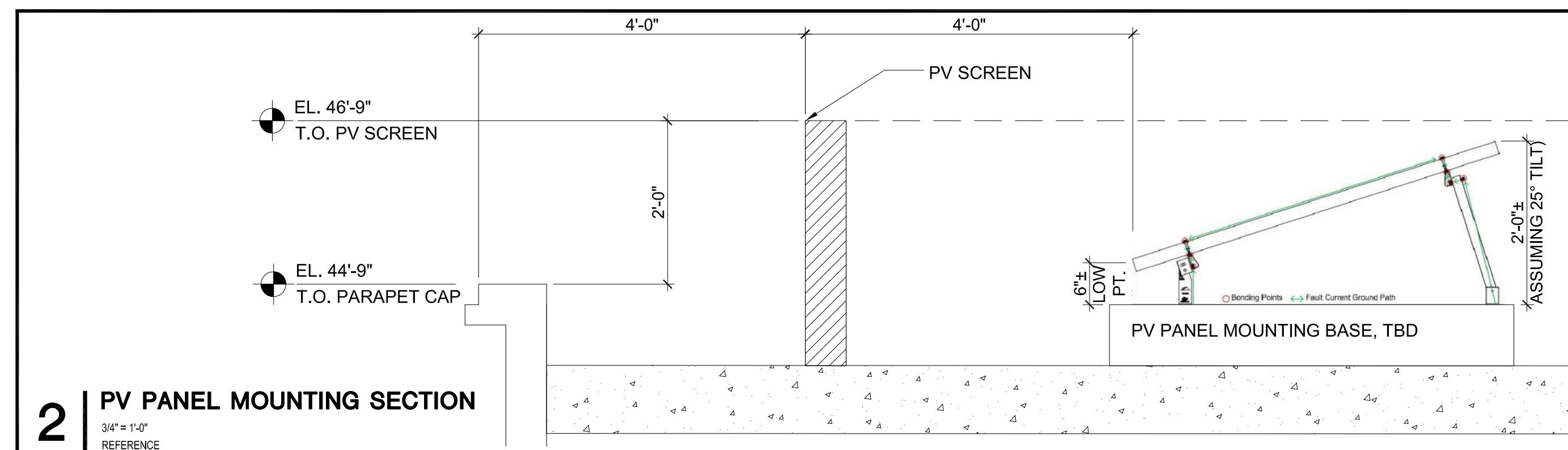
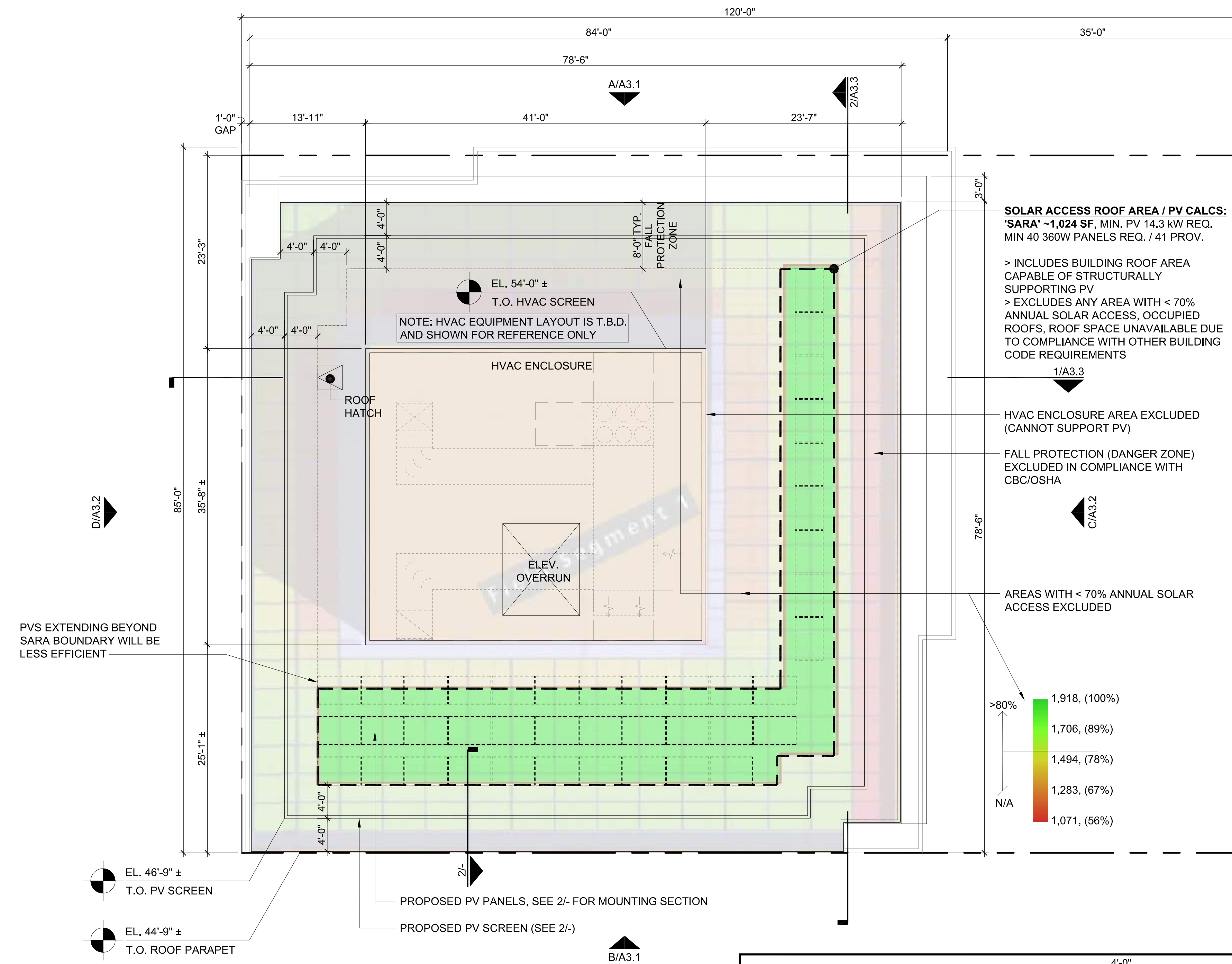
PROJECT NUMBER
18028.00

SHEET TITLE
THIRD FLOOR PLAN



SHEET NUMBER

A2.3

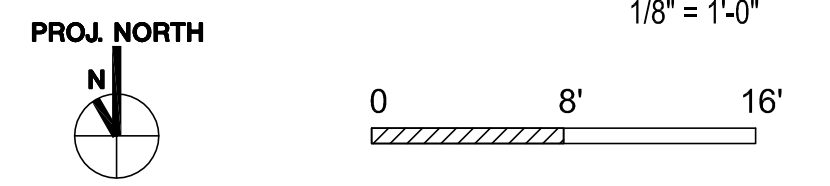


ISSUES AND REVISIONS		
NO.	DATE	DESCRIPTION
	10.04.2019	PLANNING SUBMITTAL
	08.13.2021	PLANNING RESUBMITTAL #1
	01.28.2022	PLANNING RESUBMITTAL #2
	10.28.2022	PLANNING RESUB. #3 / NEW SUB.
	01.27.2023	PLANNING RESUB. #4
	07.21.2023	PLANNING RESUB. #5

PROJECT NUMBER
18028.00

SHEET TITLE
ROOF PLAN

SCALE
1/8" = 1'-0"

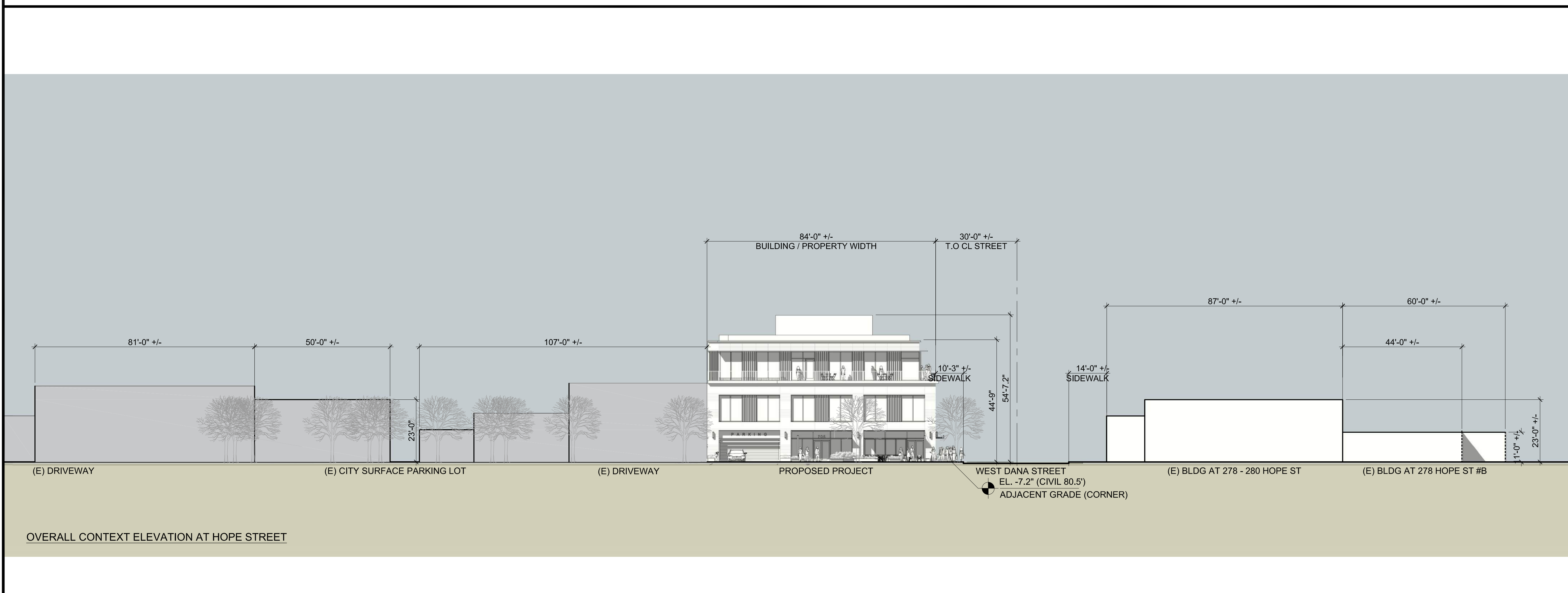
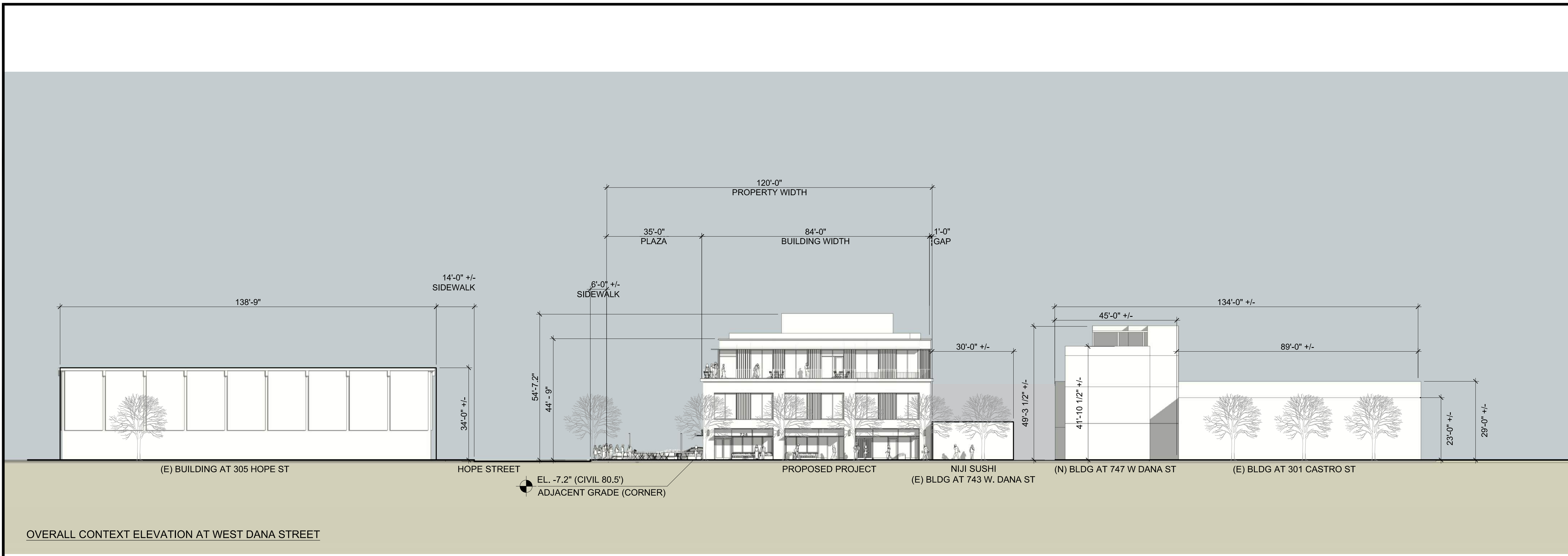


SHEET NUMBER

A2.4

1 ROOF PLAN
1/8" = 1'-0"

2 PV PANEL MOUNTING SECTION
3/4" = 1'-0"
REFERENCE

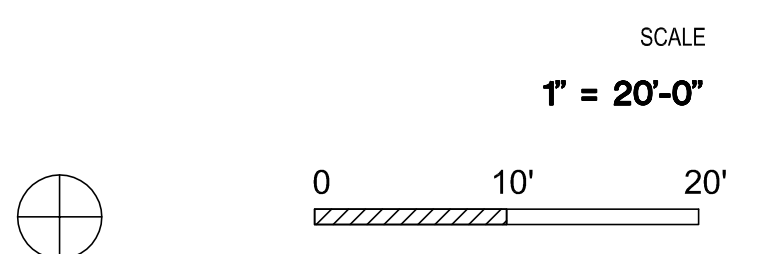


ISSUES AND REVISIONS

NO.	DATE	DESCRIPTION
10.04.2019		PLANNING SUBMITTAL
08.13.2021		PLANNING RESUBMITTAL #1
01.28.2022		PLANNING RESUBMITTAL #2
10.28.2022		PLANNING RESUB. #3 / NEW SUB.
01.27.2023		PLANNING RESUBMITTAL #4
07.21.2023		PLANNING RESUBMITTAL #5

PROJECT NUMBER
18028.00

SHEET TITLE
CONTEXT (STREET) ELEVATIONS



SHEET NUMBER

A3.0



B. SOUTH ELEVATION



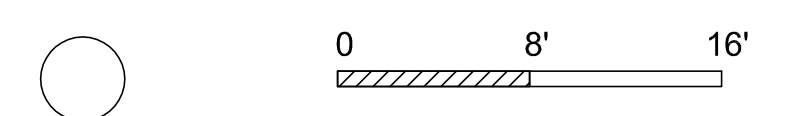
A. NORTH ELEVATION (W. DANA STREET)

ISSUES AND REVISIONS		
NO.	DATE	DESCRIPTION
	10.04.2019	PLANNING SUBMITTAL
	08.13.2021	PLANNING RESUBMITTAL #1
	01.28.2022	PLANNING RESUBMITTAL #2
	10.28.2022	PLANNING RESUB. #3 / NEW SUB.
	01.27.2023	PLANNING RESUBMITTAL #4
	07.21.2023	PLANNING RESUBMITTAL #5

PROJECT NUMBER
18028.00

SHEET TITLE
PROPOSED ELEVATIONS

SCALE
1/8" = 1'-0"



SHEET NUMBER

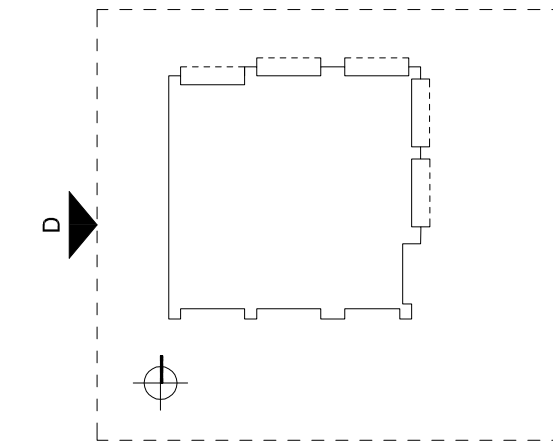
A3.1



PAINTED METAL PARAPET CAP & PV SCREEN PANEL BEYOND, COLOR C
 VARIED WARM WHITE TERRA-COTTA PANELS
 CLEAR VISION GLASS WITH CAPTURED MULLIONS AT THIRD FLOOR
 CANTILEVERED SOLID METAL PANEL CANOPY (3' PROJ.), COLOR C
 PAINTED METAL RAILING, COLOR C

PAINTED LIGHT SAND FINISH CEMENT PLASTER, COLOR D (HVAC SCREEN)
 PAINTED PROJECTING METAL VERTICAL FIN PANELS AT THIRD FLOOR, COLOR A
 PAINTED SMOOTH FINISH CEMENT PLASTER, COLOR D
 PAINTED METAL PROJECTING CORNICE, COLOR B
 PAINTED SMOOTH FINISH CEMENT PLASTER, COLOR E

EL. 54'-0"
 T.O. HVAC SCREEN
 EL. 46'-9"
 T.O. PV SCREEN
 EL. 44'-9"
 T.O. ROOF



VARIED WARM NEUTRAL TERRA-COTTA PANELS
 1/2" CEMENT PLASTER CONTROL JOINT, TYP.

EL. 30'-0"
 THIRD FLOOR

EL. 15'-0"
 SECOND FLOOR

BLIND WALL FACING (E) RETAIL

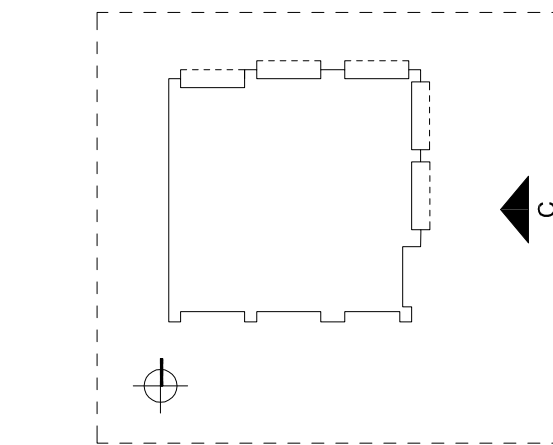
EL. 0'-0"
 FIRST FLOOR

D. WEST ELEVATION

CAPTURED PAINTED METAL HORIZONTAL MULLION AT CORNER & DOORS, TYP., COLOR A
 PAINTED METAL RAILING, COLOR C
 PAINTED METAL PROJECTING CORNICE, COLOR B
 PAINTED METAL WINDOWS & PROJECTING VERTICAL FIN PANELS AT SECOND FLOOR, COLOR A
 PAINTED METAL PARAPET CAP & PV SCREEN PANEL BEYOND, COLOR C
 PAINTED SMOOTH FINISH CEMENT PLASTER, COLOR E

PAINTED LIGHT SAND FINISH CEMENT PLASTER, COLOR D (HVAC SCREEN)
 VARIED WARM WHITE TERRA-COTTA PANELS
 CLEAR VISION GLASS WITH CAPTURED MULLIONS AT SECOND/THIRD FLOORS, TYP.
 PAINTED METAL WINDOWS & PROJECTING VERTICAL FIN PANELS AT THIRD FLOOR, COLOR A
 CAPTURED PAINTED METAL HORIZONTAL MULLION AT CORNER & DOORS, TYP., COLOR A
 CANTILEVERED SOLID METAL PANEL CANOPY (3' PROJ.), COLOR C

EL. 54'-0"
 T.O. HVAC SCREEN
 EL. 46'-9"
 T.O. PV SCREEN
 EL. 44'-9"
 T.O. ROOF



EL. 30'-0"
 THIRD FLOOR

EL. 15'-0"
 SECOND FLOOR

EL. 0'-0"
 FIRST FLOOR

PAINTED METAL FASCIA & BANG BAR, COLOR B
 VARIED WARM NEUTRAL TERRA-COTTA PANELS
 CLEAR VISION GLASS WITH CAPTURED WOOD COMPOSITE MULLION FRAMING, COLOR A

CUSTOM WALL MOUNTED PAINTED METAL SCENCE LIGHTING, COLOR A
 PAINTED METAL CANOPIES, COLOR B
 VARIED WARM WHITE TERRA-COTTA PANELS

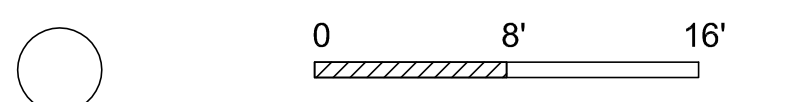
C. EAST ELEVATION (HOPE STREET)

ISSUES AND REVISIONS		
NO.	DATE	DESCRIPTION
	10.04.2019	PLANNING SUBMITTAL
	08.13.2021	PLANNING RESUBMITTAL #1
	01.28.2022	PLANNING RESUBMITTAL #2
	10.28.2022	PLANNING RESUB. #3 / NEW SUB.
	01.27.2023	PLANNING RESUBMITTAL #4
	07.21.2023	PLANNING RESUBMITTAL #5

PROJECT NUMBER
18028.00

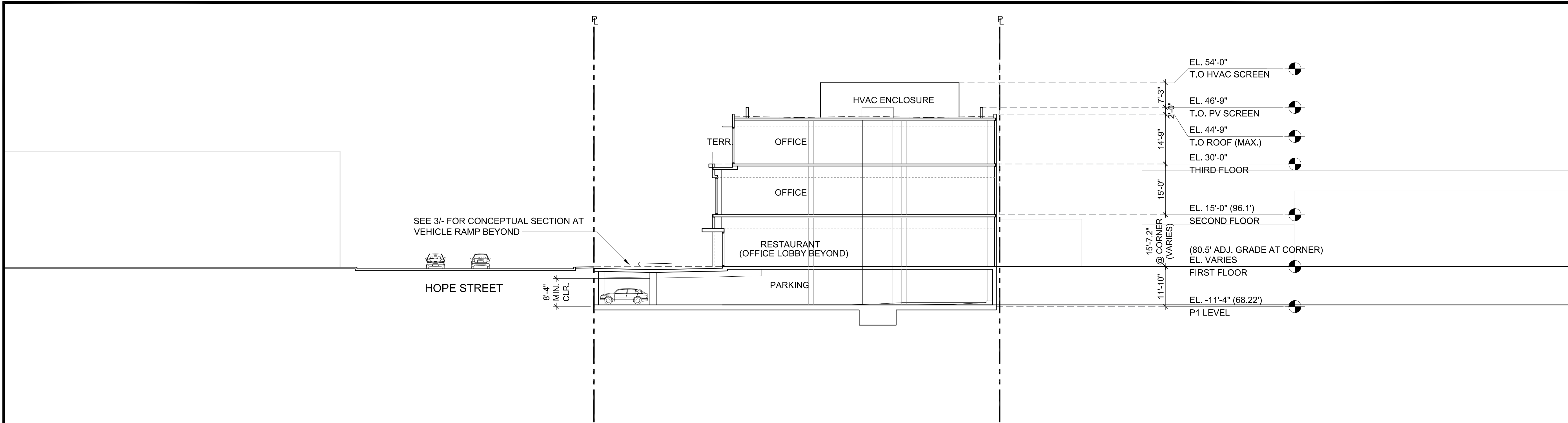
SHEET TITLE
PROPOSED ELEVATIONS

SCALE
1/8" = 1'-0"

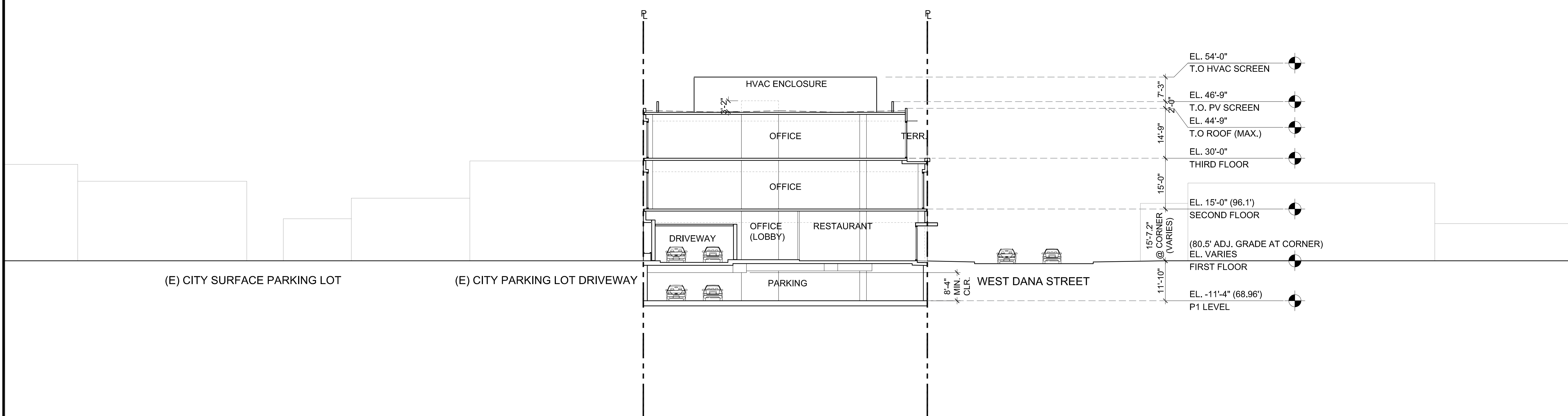


SHEET NUMBER

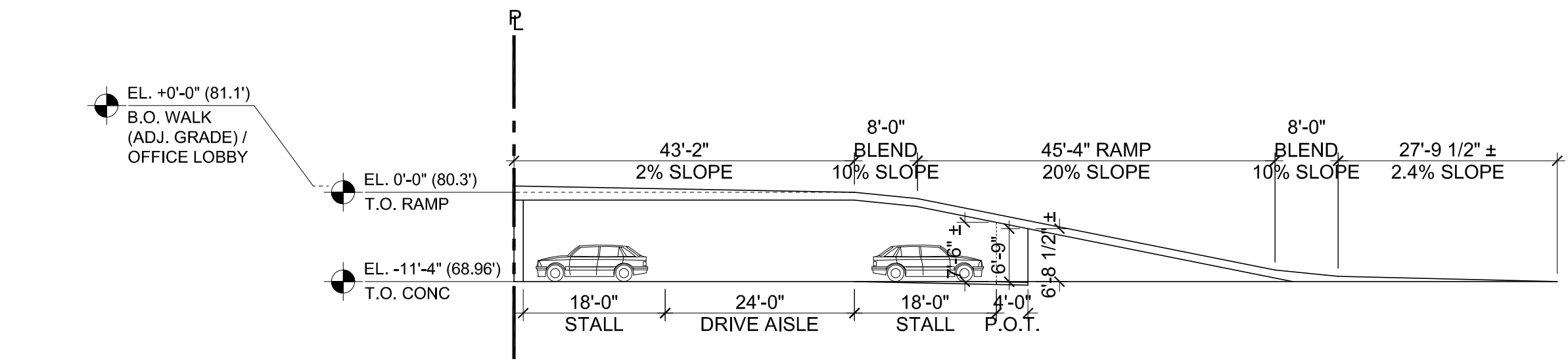
A3.2



1 BUILDING SECTION AT HOPE STREET
1/16" = 1'-0"



2 BUILDING SECTION AT WEST DANA STREET
1/16" = 1'-0"



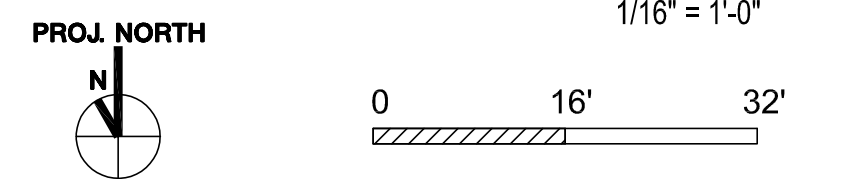
3 BUILDING SECTION AT VEHICLE ENTRY RAMP
1/16" = 1'-0"

ISSUES AND REVISIONS	
NO.	DESCRIPTION
10.04.2019	PLANNING SUBMITTAL
08.13.2021	PLANNING RESUBMITTAL #1
01.28.2022	PLANNING RESUBMITTAL #2
10.28.2022	PLANNING RESUB. #3 / NEW SUB.
01.27.2023	PLANNING RESUB. #4
07.21.2023	PLANNING RESUB. #5

PROJECT NUMBER
18028.00

SHEET TITLE
BUILDING SECTIONS

SCALE
1/16" = 1'-0"



SHEET NUMBER

A3.3