



**DATE:** October 14, 2014

**CATEGORY:** Consent

**DEPT.:** Public Works

**TITLE:** **Shoreline Boulevard Pathway Improvements, Project 15-32 – Authorize Professional Services Agreement**

### **RECOMMENDATION**

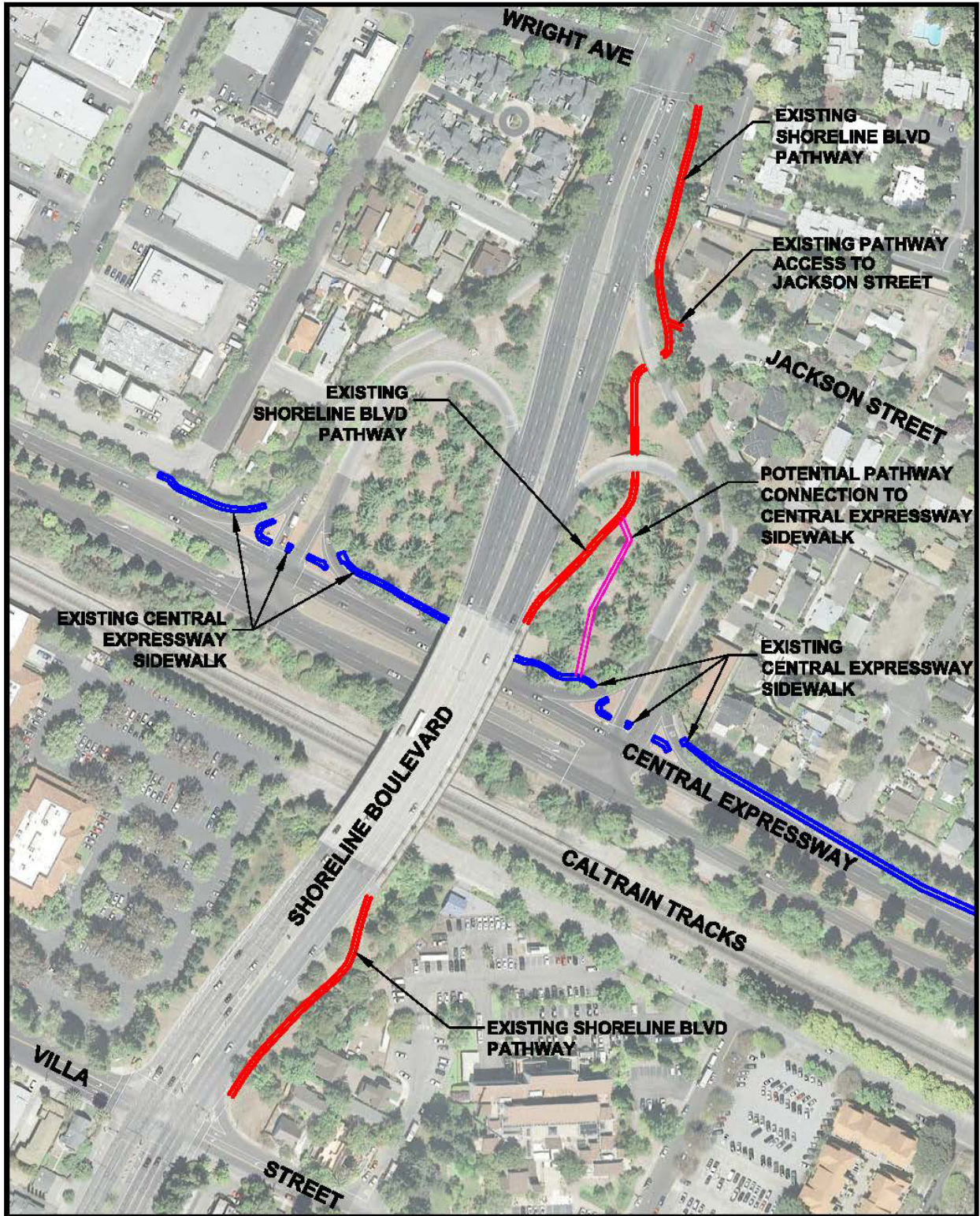
Authorize the City Manager to execute a professional services agreement with BKF Engineers of San Jose to provide engineering design services for the Shoreline Boulevard Pathway Improvements, Project 15-32, in an amount not to exceed \$215,000.

### **BACKGROUND**

The existing pathway located along the east side of Shoreline Boulevard from Wright Avenue to Villa Street is in very poor condition due to aging asphalt concrete and tree roots uplifting the pathway in some areas. The existing pathway also has steep longitudinal slopes that exceed the maximum standards established by the Americans with Disabilities Act (ADA).

The Shoreline Boulevard Pathway Improvements, Project 15-32, proposes to reconstruct the pathway from Wright Avenue to Villa Street to meet ADA-accessibility requirements and install new pathway connections to Jackson Street and the newly constructed sidewalk on Central Expressway (see Project Location Map below) while minimizing impacts to trees and optimizing safety for path users. The project scope includes removal and replacement of pathways for bicycles and pedestrians and installation of new curb, gutter, curb ramps, pathways, pathway lighting, landscaping, irrigation, storm drains, and retaining walls, if necessary. The recommended contract would provide services to design the reconstruction of the Shoreline Boulevard pathway.

This project will be coordinated with the evaluation of walking and bicycling conditions on California Street, Shoreline Boulevard, and Escuela Avenue being done under a separate project.



Project Location Map

**ANALYSIS**

Four firms responded to the City’s Request for Proposals (RFP) to provide design engineering services for the Shoreline Boulevard pathway improvements. After careful review, staff recommends BKF Engineers (BKF) on the basis of their written proposal, vast experience in completing similar projects, and understanding of the project goals.

The scope of their basic services includes review of relevant background information; supplemental topographic field survey; preparation of plans, specifications, and cost estimates; and bidding phase support (see Attachment 1 for BKF’s Scope of Work and Fee Schedule).

The fee for the recommended contract is \$195,000 for basic services and a \$20,000 contingency for unforeseen items, for a total of \$215,000. Staff considers this fee to be fair and reasonable. The estimated project cost of the design phase is:

Engineering and Design Services	\$215,000
City Project Management	40,000
Printing/ Advertising/ Miscellaneous Costs	<u>5,000</u>
Subtotal	260,000
City Administration @ 6.5%	<u>17,000</u>
TOTAL DESIGN PROJECT COST	<u>\$277,000</u>

If the agreement is approved by the City Council, the design will commence November 2014 and be completed May 2015.

**FISCAL IMPACT**

Shoreline Boulevard Pathway Improvements, Project 15-32, is funded with \$180,000 from the Construction/Conveyance Tax Fund and \$100,000 from the Prometheus Real Estate Group Funding, for a total funding of \$280,000. The Prometheus contribution was a condition of approval to fund off-site pedestrian and bicycle improvements.

Including the proposed contract amount of \$215,000, the estimated total project cost (design phase only) is \$277,000. Sufficient funding is available to complete the design of the project based on the current cost estimate.



This design project will develop cost estimates for construction. Construction is not yet funded.

**ALTERNATIVES**

1. Do not authorize professional design services agreement with BKF and defer the project until construction is funded.
2. Defer the project until the completion of the California Street/Shoreline Boulevard/Escuela Avenue project.
3. Provide other direction.

**PUBLIC NOTICING** – Agenda posting.

Prepared by:

Joy Houghton  
Associate Engineer

Reviewed by:

Lisa Au  
Principal Civil Engineer

Approved by:

Michael A. Fuller  
Public Works Director

Daniel H. Rich  
City Manager

JH-LA/TDA/7/CAM  
918-10-14-14CR-E

Attachment: 1. BKF Scope of Work and Fee Schedule

cc: APWD – Solomon, PCE – Au, SPM – Rodriguez, ACE – Houghton, AAIL – Grimm,  
F/c