



**DATE:** January 31, 2017

**CATEGORY:** Consent

**DEPT.:** Public Works

**TITLE:** **Stevens Creek Trail Landscaping  
Improvements South of El Camino  
Real, Project 11-34 – Various Actions**

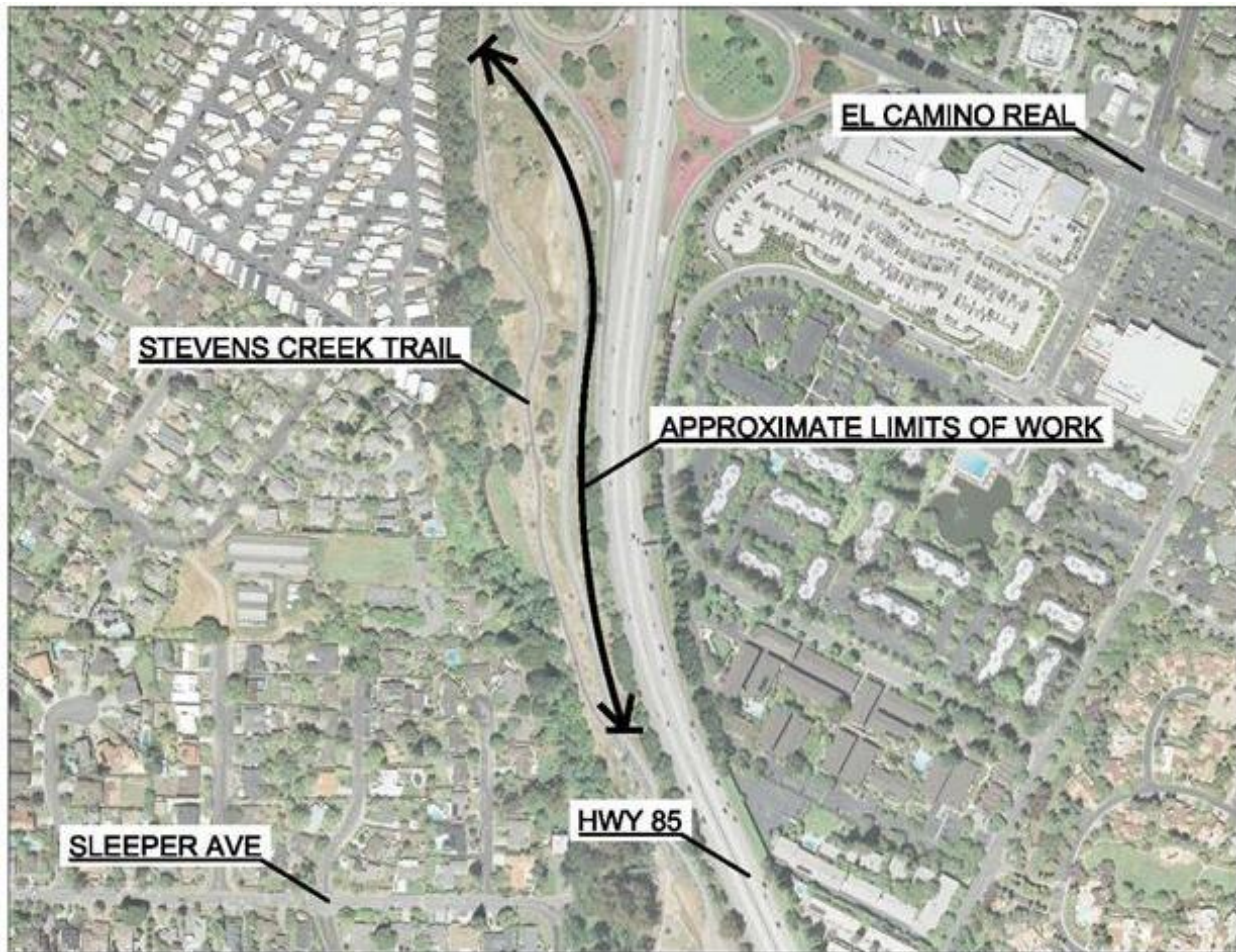
### **RECOMMENDATION**


1. Authorize the transfer and appropriate \$15,000 from the Biennial Park Renovations/Improvements, Project 15-19 to Stevens Creek Trail Landscaping South of El Camino Real, Project 11-34. (Five votes required)
2. Approve plans and specifications for Stevens Creek Trail Landscaping South of El Camino Real, Project 11-34, and authorize staff to advertise the project for bids.
3. Authorize the City Manager to award the construction contract to the lowest responsible bidder if the low bid is within the project budget.

### **BACKGROUND**

The Stevens Creek Trail segment south of El Camino Real meanders through open meadow between Stevens Creek and Highway 85. Some landscaping was installed when the trail was originally constructed, but there are open areas with little landscaping where the trail experience is affected by sound and visual impacts from nearby Highway 85.

Stevens Creek Trail Landscaping Improvements, Project 11-34, was created to enhance the trail experience by planting trees and shrubs on City-owned property adjacent to Highway 85. The intent is to install plants (and irrigation) in gaps where there currently are no trees or shrubs to create a natural screen between the trail and Highway 85. The limits of work are shown in Exhibit A.



 CITY OF MOUNTAIN VIEW  
STEVENS CREEK TRAIL LANDSCAPE IMPROVEMENTS, PROJECT 11-34

#### **EXHIBIT A - STEVENS CREEK TRAIL LANDSCAPING LIMITS OF WORK**

Council's intent when the project was created was for construction to be performed by a combination of contracted and volunteer services. As designed, the irrigation and shrubs would be installed by a contractor, and the trees would be installed by volunteers from local groups.

#### **ANALYSIS**

The project budget is relatively small for such a large area. As currently budgeted, the project would include 62 five-gallon trees and 73 five-gallon shrubs. All trees and shrubs are native and appropriate for the area.

### Upsizing Trees

Staff proposes to increase the size of the trees from 5-gallon to 15-gallon with supplemental funding from the Biennial Parks Renovations/Improvements, Project 15-19. These are existing funds that are appropriately used for tree planting, and the increased plant size would more quickly accomplish the project goal of screening the trail from Highway 85.

### Water Main Project Tree Mitigation

As part of the Annual Water Main/Service Line Replacement, Project 14-21, water service will be provided to the City's Moffett Gateway site at 750 Moffett Boulevard and would require the removal of 10 Heritage trees for the construction of the water main. At its meeting on May 11, 2016, the Parks and Recreation Commission approved a replacement ratio of 1:1 with 24" box trees for the removal of the 10 Heritage trees. These 10 Heritage trees were planned for removal as part of the Heritage Tree Removal Permit for the Moffett Gateway development plan that was approved by City Council in October 2016.

Unfortunately, the only area near the Moffett Gateway site for mitigation planting is in Caltrans right-of-way. To avoid the difficulty of Caltrans permitting, staff proposes to plant the mitigation trees with the Stevens Creek Trail landscaping improvements. Advantages include that the City controls the property near Stevens Creek Trail so no Caltrans permits are required, and the area is large and open and is in need of additional planting. Staff also proposes to double the number of mitigation trees from 10 to 20 and decrease their size from 24" box to 15-gallon because 24" box trees would be difficult for volunteers to plant. This would increase the total number of trees planted in the Stevens Creek Trail landscaping improvements from 62 to 82.

### Schedule

Plans and specifications for the project are complete and available for viewing in the Public Works Department. If Council approves the recommended actions, construction is expected to begin in spring 2017 and be completed by summer 2017.

### **FISCAL IMPACT**

Stevens Creek Trail Landscaping Improvements, Project 11-34, is funded with \$24,000 from the Shoreline Regional Park Community Fund and \$69,000 from the Park Land Dedication Fund for total funding of \$93,000. Supplemental funding is proposed to be transferred from the Biennial Park Renovations/Improvements, Project 15-19 (\$15,000),

and \$35,000 is proposed to be used from the Annual Water Main/Service Line Replacement, Project 14-21, to pay for its tree mitigation, bringing the total project funding to \$143,000.

The estimated total project cost is as follows:

Construction (including contingency)	\$117,000
City Project Management	6,000
Construction Inspection and Testing	5,000
Miscellaneous	<u>5,700</u>
Subtotal	\$133,700
City Administration	<u>9,300</u>
TOTAL PROJECT COST	<u>\$143,000</u>

### **ALTERNATIVES**

1. Do not supplement funding and direct staff to reduce scope of work.
2. Provide other direction.

### **PUBLIC NOTICING** – Agenda posting.

Prepared by:

Anne Marie Starr  
Senior Civil Engineer

Reviewed by:

Lisa Au  
Principal Civil Engineer

Approved by:

Michael A. Fuller  
Public Works Director

Audrey Seymour Ramberg  
Assistant City Manager

AMS/TS/5/CAM/924-01-31-17CR-E

cc: PCE – Au, PCE – Macaraeg, SCE – Starr, POSM, AE – Bumanglag, AAI –  
Goedicke, F/c