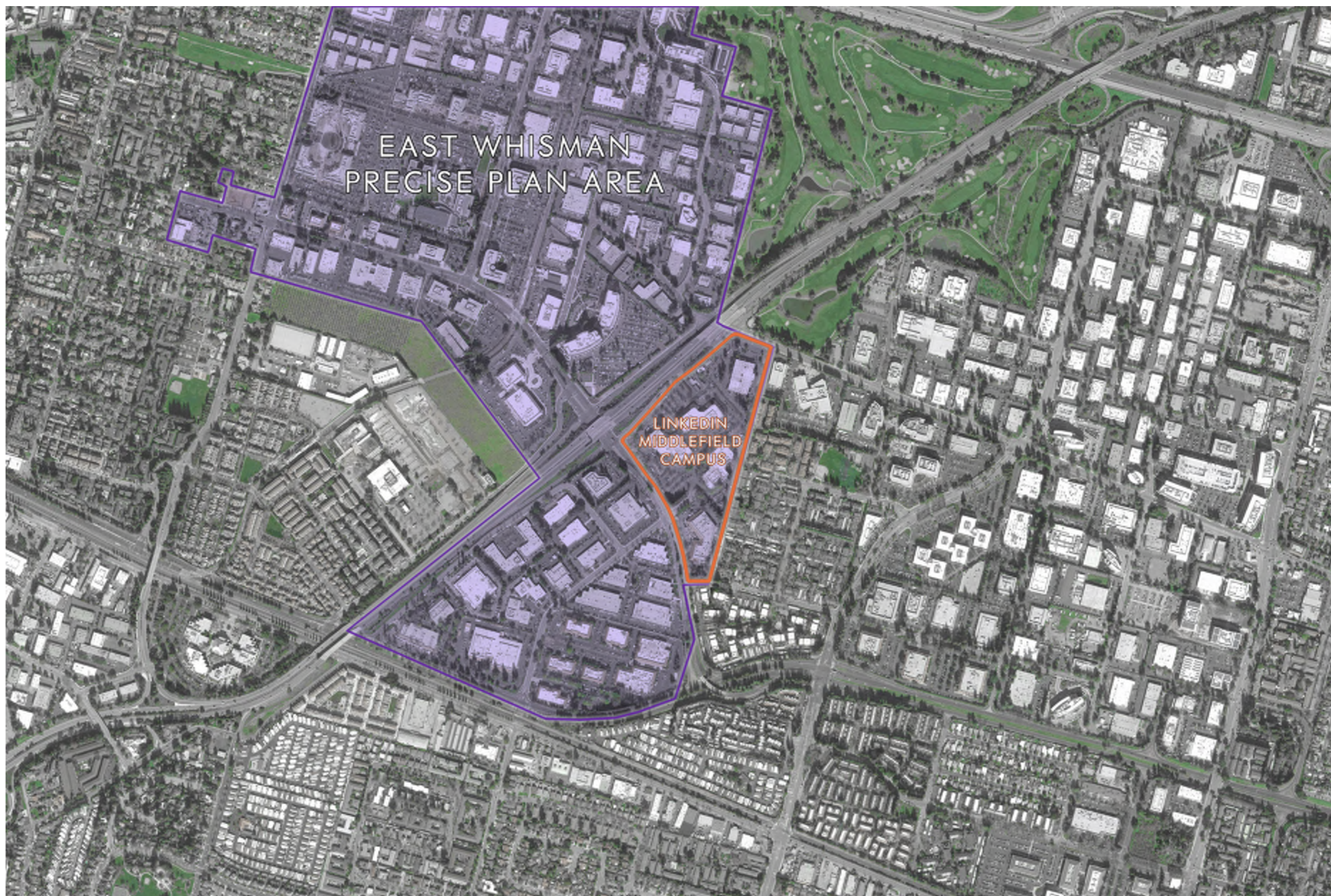
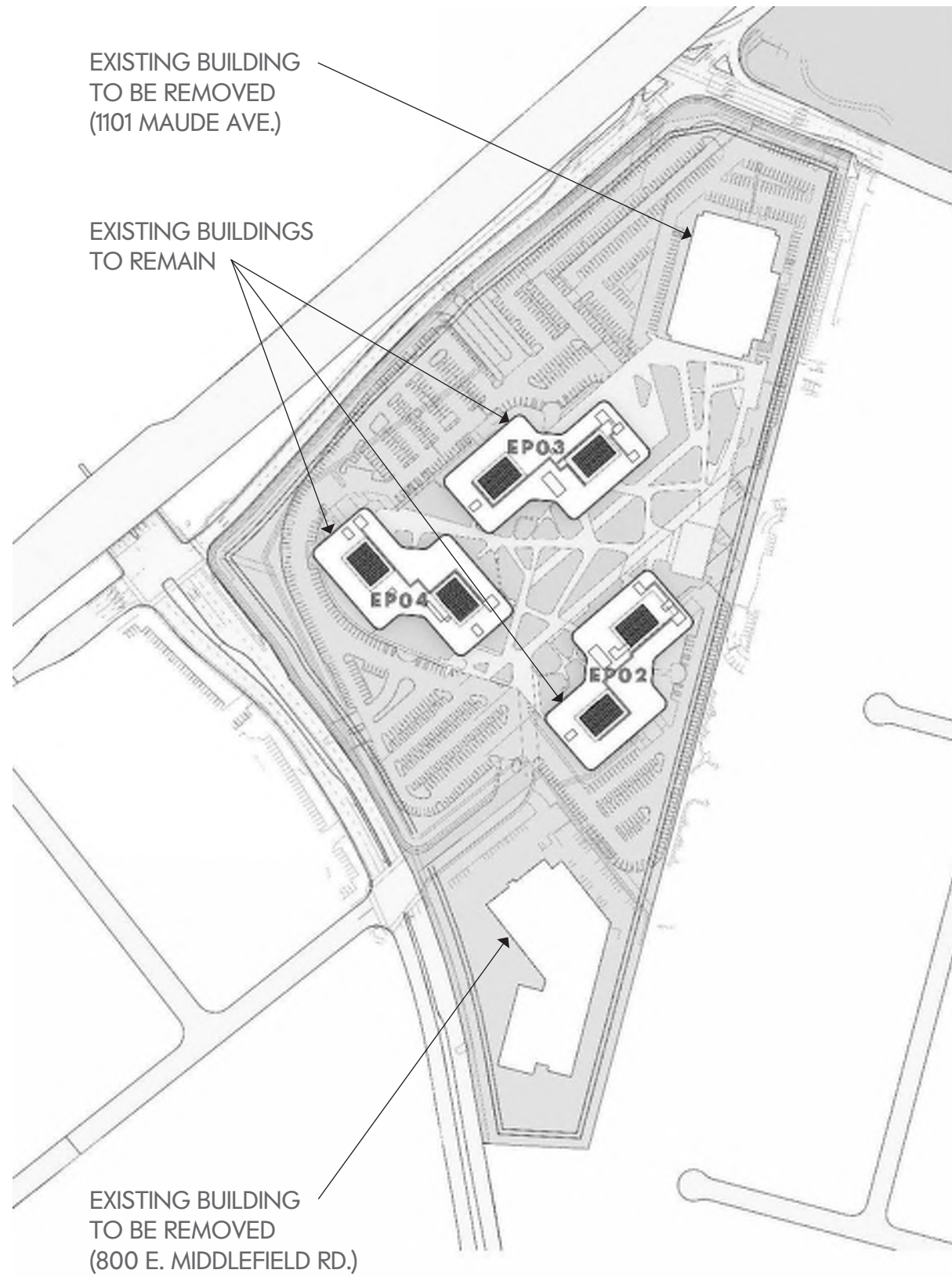


**LINKEDIN MIDDLEFIELD CAMPUS**  
STUDY SESSION

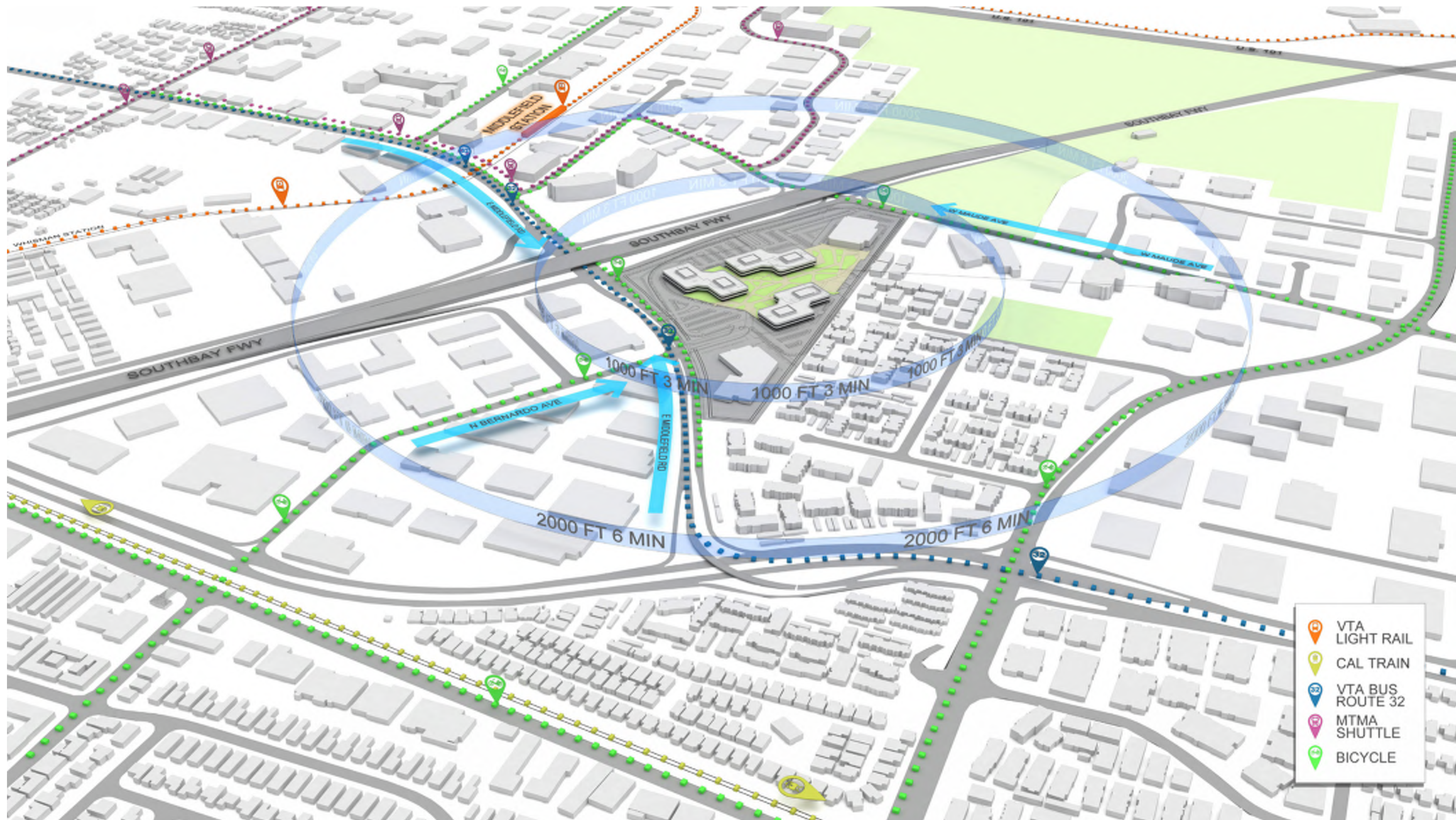
















LINKEDIN MIDDLEFIELD CAMPUS

SITE

	Site Area	
	Acres	Square Feet
700 East Middlefield Road	18.02	784,948
3 existing buildings		
800 East Middlefield Road	4.733	206,173
1 existing building		
1101 Maude Avenue	5.056	220,219
1 existing building		
Parcel Three	0.705	30,694
No Building		
Parcel Two	0.229	9,996
No Building		
Total Areas	28.743	1,252,030

OFFICE BUILDINGS

OFFICE BUILDINGS			EXISTING	NEW
Site Area		1,252,030	SF	
Current Allowable FAR =	0.35	438,211	SF	
Proposed FAR =	0.86	1,075,244	SF	
Total Existing Building Area to remain		315,231	SF	
	700 EP02		105,101	
	700 EP03		104,637	
	700 EP04		105,493	
	800 E. Middlefield	(TO BE DEMOLISHED)	62,246	
	1101 Maude	(TO BE DEMOLISHED)	89,118	
Proposed New Building Area			763,397	SF
	BUILDING 1		240,519	
	BUILDING 2		331,561	
	BUILDING 3		191,317	
			CAMPUS TOTAL	1,078,628 SF
			(Net Add	612,033 SF)

PARKING

Parking Required ( 2.7 per 1000 SF)	2,913 SPACES
parking provided	2,913 SPACES
Proposed Total Parking Area	986,909 SF





LEGEND

- ▲ PRIMARY ENTRANCE
- ▼ SERVICE ENTRANCE
- VEHICULAR CIRCULATION
- EXISTING SERVICE ENTRANCE
- ▲ SITE ENTRY

















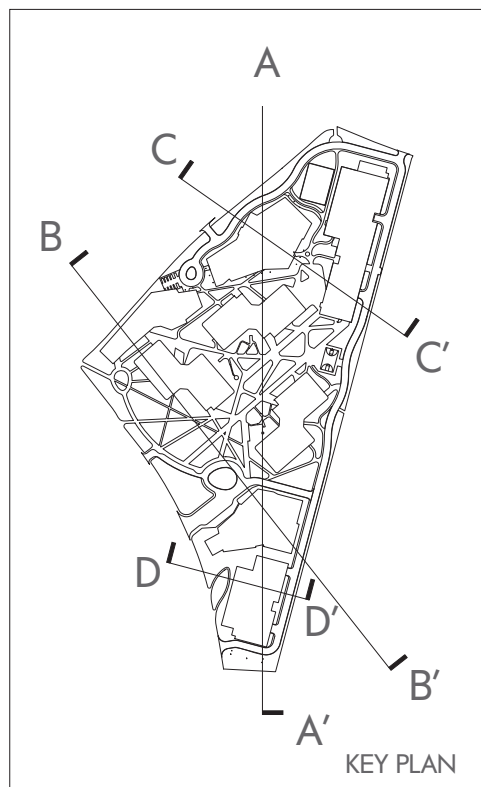
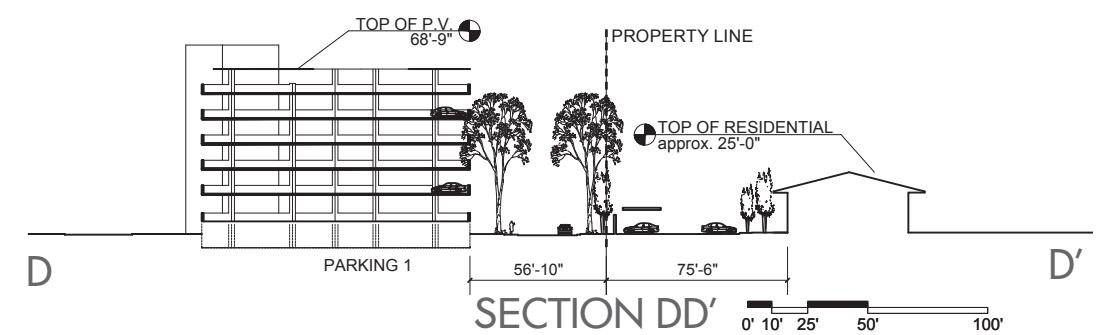
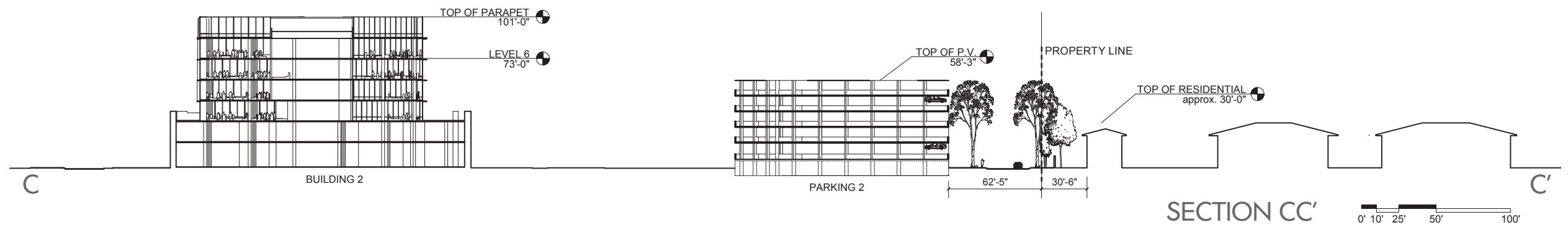
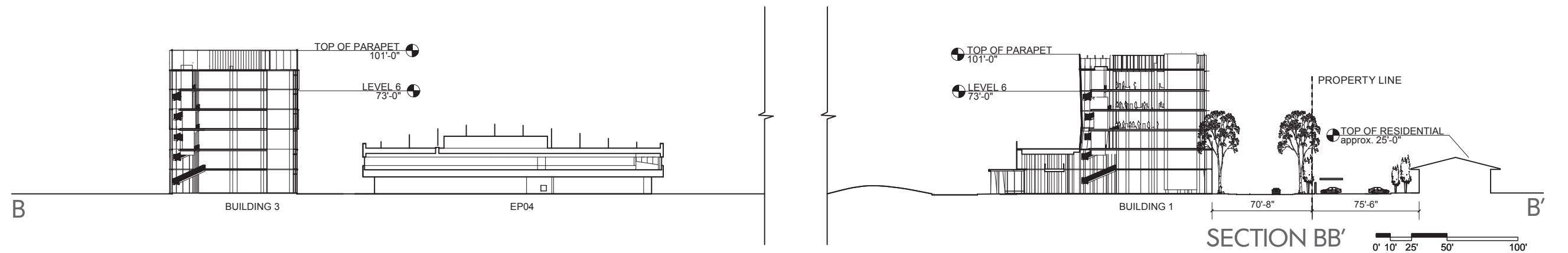
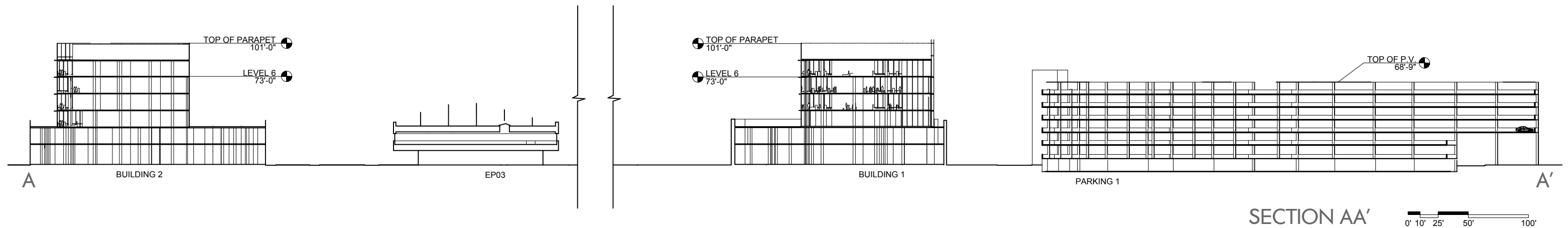
















1 - EAST

3 - NORTH

E1 - STANDARD UNITIZED CURTAIN WALL, STRUCTURALLY GLAZED SYSTEM WITH MINIMUM JOINT. GLASS TYPES TO VARY.

E2 - STOREFRONT GLAZED WALL SYSTEM WITH INTEGRAL FORMED ALUMINUM CLOSURE AND DOUBLE DOOR AS REQUIRED, TYPICAL. GLASS TYPES TO VARY.

E3 - PRECAST CONCRETE SYSTEM, ON TYPICAL 14' X 30' MODULE. TYPICAL GLASS TYPES TO VARY.



2 - WEST

4 - SOUTH



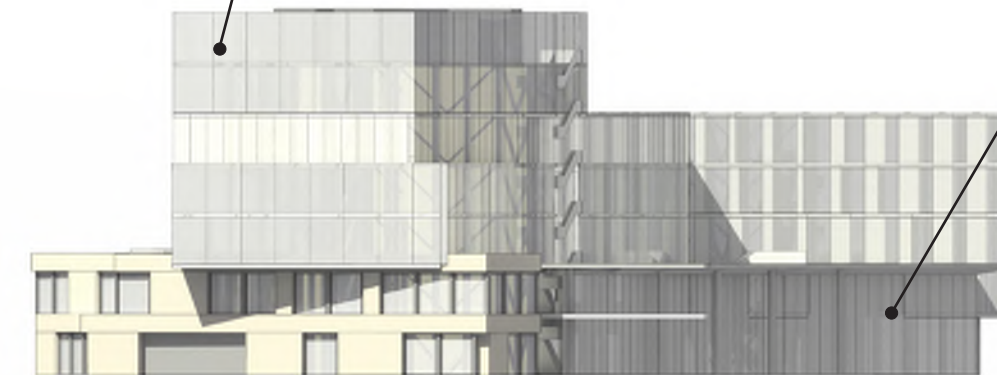




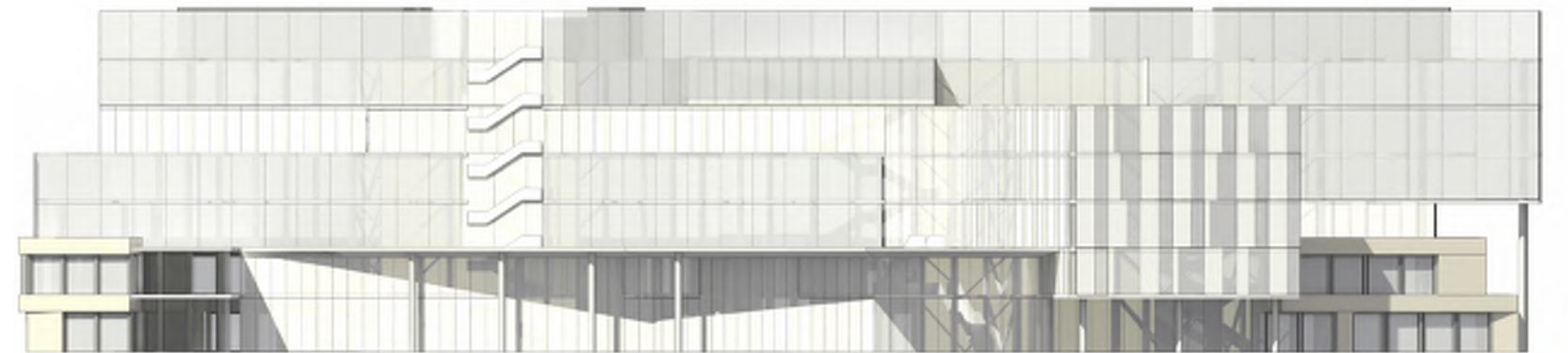
1 - EAST



3 - NORTH



2 - WEST



4 - SOUTH

E1 - STANDARD UNITIZED CURTAIN WALL, STRUCTURALLY GLAZED SYSTEM WITH MINIMUM JOINT. GLASS TYPES TO VARY.

E2 - STOREFRONT GLAZED WALL SYSTEM WITH INTEGRAL FORMED ALUMINUM CLOSURE AND DOUBLE DOOR AS REQUIRED, TYPICAL. GLASS TYPES TO VARY.

E3 - PRECAST CONCRETE SYSTEM, ON TYPICAL 14' X 30' MODULE. TYPICAL. GLASS TYPES TO VARY.







1 - EAST

3 - NORTH

E1 - STANDARD UNITIZED CURTAIN WALL, STRUCTURALLY GLAZED SYSTEM WITH MINIMUM JOINT. GLASS TYPES TO VARY.

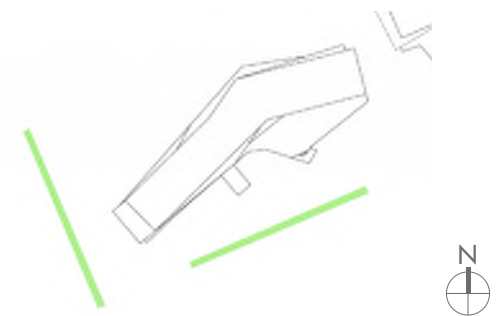
E2 - STOREFRONT GLAZED WALL SYSTEM WITH INTEGRAL FORMED ALUMINUM CLOSURE AND DOUBLE DOOR AS REQUIRED, TYPICAL. GLASS TYPES TO VARY.

E3 - PRECAST CONCRETE SYSTEM, ON TYPICAL 14' X 30' MODULE. TYPICAL GLASS TYPES TO VARY.



2 - WEST

4 - SOUTH















1 - EAST

3 - NORTH

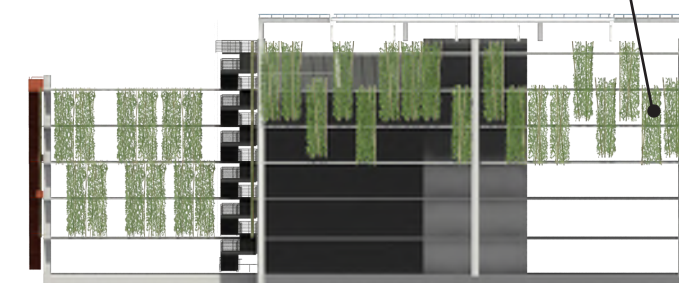
PHOTOVOLTAIC GLASS AND STEEL CANOPIES:  
INCLUDED ARE A SERIES OF GLASS PV CANOPIES  
WHICH INCLUDE STEEL FRAMING AND ANCHORAGE  
TO STRUCTURE. CANOPIES WILL BE ENGINEERED  
BY FABRICATOR, INCLUDING ALL CONNECTIONS TO  
BUILDING.

PERFORATED ALUMINUM SCREEN SYSTEM:  
PAINTED, PERFORATED ALUMINUM SCREEN  
ON LIGHTWEIGHT STEEL FRAME MECHAN-  
ICALLY FASTENED TO THE PARKING STRUC-  
TURE. ALLOW FOR 5 COLOR VARIATIONS

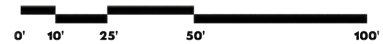
GREEN SCREEN WALL:  
MANUFACTURER STANDARD GREEN WALL  
WIRE MESH VEGETATION SUPPORT SYSTEM,  
EXTENDING TO GRADE LEVEL PLANTING  
BED. ABOVE GRADE PLANTERS AS SHOWN



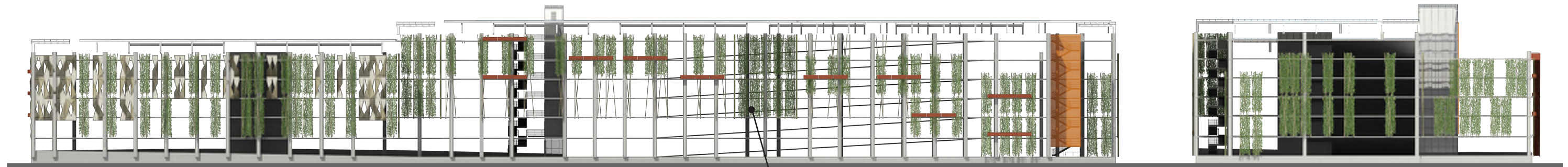
2 - WEST



4 - SOUTH







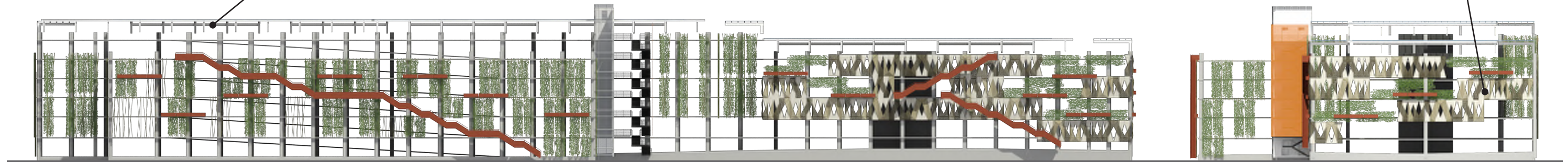
1 - EAST

3 - NORTH

PHOTOVOLTAIC GLASS AND STEEL CANOPIES:  
INCLUDED ARE A SERIES OF GLASS PV CANOPIES  
WHICH INCLUDE STEEL FRAMING AND ANCHORAGE  
TO STRUCTURE. CANOPIES WILL BE ENGINEERED  
BY FABRICATOR, INCLUDING ALL CONNECTIONS TO  
BUILDING.

GREEN SCREEN WALL:  
MANUFACTURER STANDARD GREEN  
WALL WIRE MESH VEGETATION SUP-  
PORT SYSTEM, EXTENDING TO GRADE  
LEVEL PLANTING BED. ABOVE GRADE  
PLANTERS AS SHOWN

PERFORATED ALUMINUM SCREEN SYSTEM:  
PAINTED, PERFORATED ALUMINUM SCREEN ON LIGHT-  
WEIGHT STEEL FRAME MECHANICALLY FASTENED TO THE  
PARKING STRUCTURE. ALLOW FOR 5 COLOR VARIATIONS



2 - WEST

4 - SOUTH

