

Application History

4/17/2025 09:07:13 am - Application started
4/17/2025 09:35:41 am - Status Update: SubmitStart
4/17/2025 09:35:42 am - Created project HTR-10892 in PDox
4/17/2025 09:35:42 am - Status Update: Complete
4/17/2025 09:35:41 am - Application submitted

Request Name: Remove pine tree at driveway

Heritage Tree Removal Permit Application

Project Information

COMPLETE

Address information is verified using the City of Mountain View's address database, which can be accessed using the [City's online GIS](#). If your address does not appear after typing in the address numbers, please contact the Mountain View Building Division at 650-903-6313. Please note: Street directions are abbreviated (e.g. West = W) and no punctuation is included (e.g. 500 W Castro St.)

Project Address * 3440 Truman Ave

REQUIRED: Address must be entered and selected from the dropdown list to populate all required address fields. If all required address fields are not populated, the application will not be accepted.

Project City * Mountain View

Project State * CA

Project Zip Code * 94040

Project Assessor Parcel Number 19711074

Heritage Tree Removal Information

COMPLETE

Property Type * Single-Family Residential Property



Where is the Heritage Tree(s) located on the property? * Both on private property and in the public right-of-way



Number of Trees Proposed to be Removed * 2



Proposed Tree Removal No. 1

COMPLETE

Type of Tree Species * Pine

Tree Circumference (in inches, measured 54" above grade) * 63

Reason for Tree Removal: Pine
1. Tree's root have damaged the existing Driveway



Current Condition of Tree (Check all that apply) *

- ☒ Tree is in poor health
☒ Tree is in danger of falling
☒ Tree is diseased with pests, insects, and/or beetles
☒ Tree is near end of the life span
☒ Tree is dead
☒ Tree has poor structure and/or an unbalanced canopy
☒ Tree is in good or fair health

Is the tree impacted by construction activity or existing conditions? Check all that apply: *

- ☒ Tree does not have proper growth space
☒ Tree removal is necessary to construct new improvements
☒ Tree is interfering with utility services (.g. electricity, gas, sewer, and/or water lines)
☒ Tree is growing in close proximity to a structure(s) and causing damage (or will in the near future)
☒ Other reason

Please briefly describe your effort(s) to preserve the tree *

Trying to preserve our cars and family's life

**Proposed Tree Removal No. 2****COMPLETE****Type of Tree Species ***

Giant Sequoia

Tree Circumference (in inches, measured 54" above grade) *

96

Reason for Tree Removal:Giant Sequoia
Tree is near end of life. This tree is in the public right of way and is in front of**Current Condition of Tree (check all that apply): ***

- ☒ Tree is in poor health
☒ Tree is in danger of falling
☒ Tree is diseased with pests, insects, and/or beetles
☒ Tree is near end of the life span
☒ Tree is dead
☒ Tree has poor structure and/or an unbalanced canopy
☒ Tree is in good or fair health

Is the tree impacted by construction activity or existing conditions? Check all that apply: *

- ☒ Tree does not have proper growth space
☒ Tree removal is necessary to construct new improvements
☒ Tree is interfering with utility services (.g. electricity, gas, sewer, and/or water lines)
☒ Tree is growing in close proximity to a structure(s) and causing damage (or will in the near future)
☒ Other reason

Please briefly describe your effort(s) to preserve the tree. *

Trying to preserve our cars and family's life

**Tree Replanting Information****COMPLETE****No. of Trees Proposed to be Replanted ***

4

The City's standard replacement requirement is 2 new trees for every 1 heritage tree removed. An in-lieu fee may be authorized if replacement is not feasible.

Estimated Time to Plant Replacement Trees (following permit approval) *

To be determined if construction project

**Property Owner Information****INCOMPLETE**

Property Owner is logged in as current user.

First Name * Prithvi**Last Name *** Raj**Address *****Address (Continued)****City *** Mountain View**State *** CA**Zip Code *** 94040

Email

Phone Number *

Applicant Information

COMPLETE

☒ Applicant is current logged in user.

Applicant First Name * Richard

Applicant Last Name * Nuti

Applicant Phone Number * [REDACTED]

Applicant Email Address * [REDACTED]

Applicant Address * [REDACTED]

Applicant Address (Continued)

Applicant City * Gilroy

Applicant State * CA

Applicant Zip Code * 95020

Signature

COMPLETE

I hereby declare that I have read and understood the above information, and:

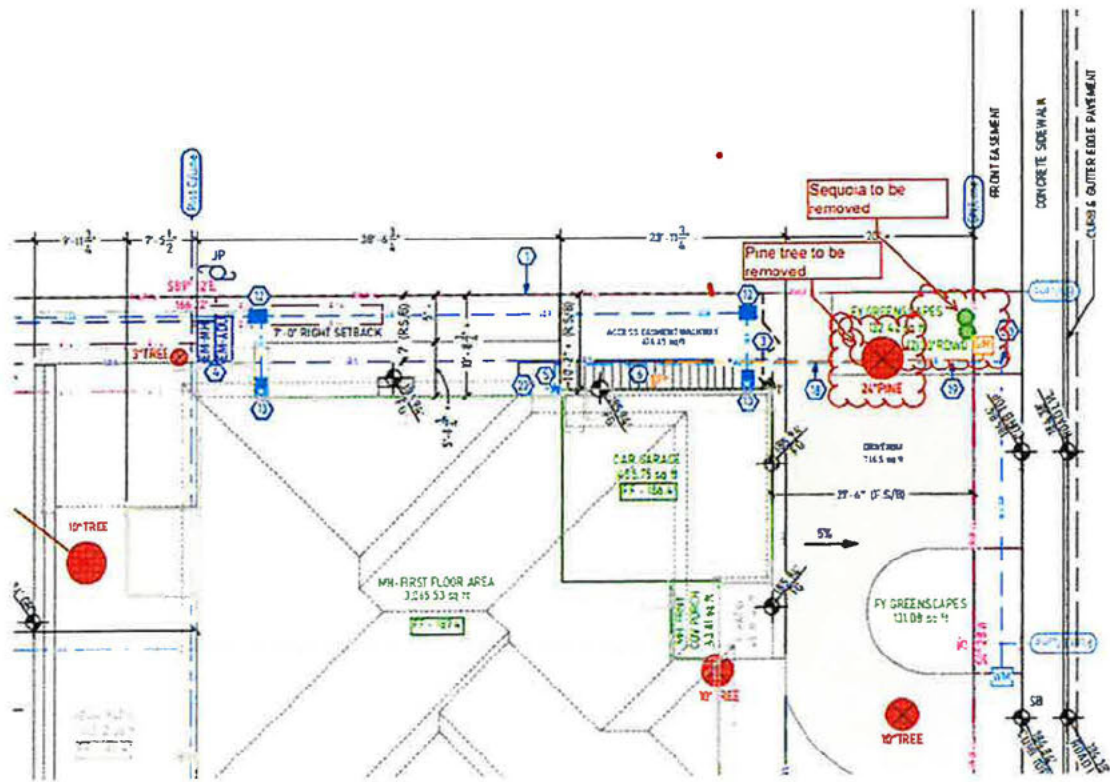
☒ I acknowledge that:

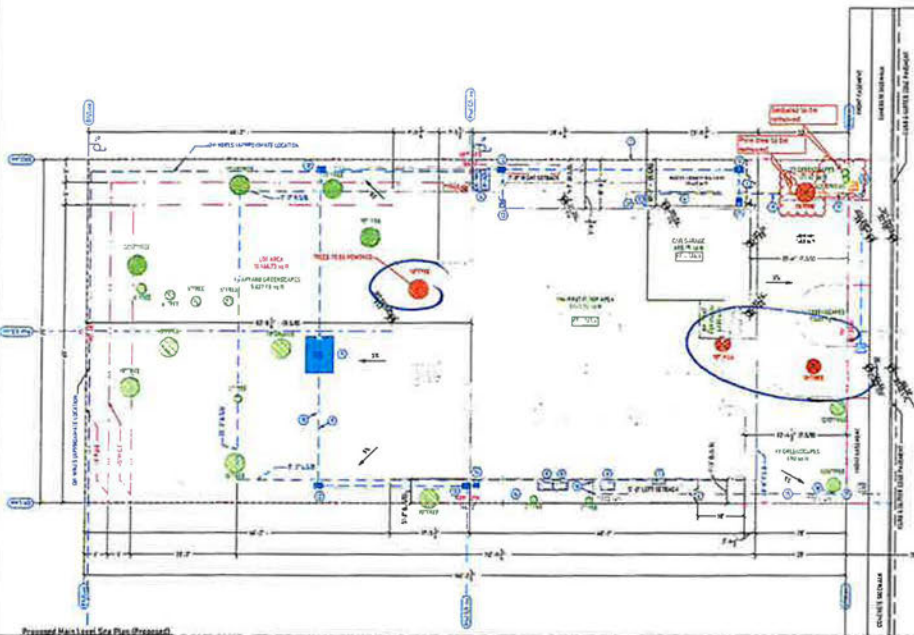
1. I understand and agree that clicking on the box above identifies that I am the authorized applicant, as designated by the property owner(s), on this permit;
2. I hereby declare, under penalty of perjury, that the information stated on forms, plans, documents, and other materials submitted herewith in support of the application is true and correct to the best of my knowledge; and
3. It is my responsibility to inform the City, through the staff assigned to my permit, of any changes to information represented in this application submittal, including subsequent submittals, in a timely fashion.

Applicant: Richard NutiSignature date: 2025-04-17 09:35 AM

Payment Details

[Home](#) | [Profile](#)





NO.	DESCRIPTION	DATE	BY	CHKD.
1	PRELIMINARY SITE PLAN	10/10/2023	PRITHVI RAJ	PRITHVI RAJ
2	REVISIONS			
3				
4				
5				
6				
7				
8				
9				
10				
11				
12				
13				
14				
15				
16				
17				
18				
19				
20				
21				
22				
23				
24				
25				
26				
27				
28				
29				
30				
31				
32				
33				
34				
35				
36				
37				
38				
39				
40				
41				
42				
43				
44				
45				
46				
47				
48				
49				
50				
51				
52				
53				
54				
55				
56				
57				
58				
59				
60				
61				
62				
63				
64				
65				
66				
67				
68				
69				
70				
71				
72				
73				
74				
75				
76				
77				
78				
79				
80				
81				
82				
83				
84				
85				
86				
87				
88				
89				
90				
91				
92				
93				
94				
95				
96				
97				
98				
99				
100				

REVISIONS

1. PRELIMINARY SITE PLAN

2. REVISIONS

3. REVISIONS

4. REVISIONS

5. REVISIONS

6. REVISIONS

7. REVISIONS

8. REVISIONS

9. REVISIONS

10. REVISIONS

11. REVISIONS

12. REVISIONS

13. REVISIONS

14. REVISIONS

15. REVISIONS

16. REVISIONS

17. REVISIONS

18. REVISIONS

19. REVISIONS

20. REVISIONS

21. REVISIONS

22. REVISIONS

23. REVISIONS

24. REVISIONS

25. REVISIONS

26. REVISIONS

27. REVISIONS

28. REVISIONS

29. REVISIONS

30. REVISIONS

31. REVISIONS

32. REVISIONS

33. REVISIONS

34. REVISIONS

35. REVISIONS

36. REVISIONS

37. REVISIONS

38. REVISIONS

39. REVISIONS

40. REVISIONS

41. REVISIONS

42. REVISIONS

43. REVISIONS

44. REVISIONS

45. REVISIONS

46. REVISIONS

47. REVISIONS

48. REVISIONS

49. REVISIONS

50. REVISIONS

51. REVISIONS

52. REVISIONS

53. REVISIONS

54. REVISIONS

55. REVISIONS

56. REVISIONS

57. REVISIONS

58. REVISIONS

59. REVISIONS

60. REVISIONS

61. REVISIONS

62. REVISIONS

63. REVISIONS

64. REVISIONS

65. REVISIONS

66. REVISIONS

67. REVISIONS

68. REVISIONS

69. REVISIONS

70. REVISIONS

71. REVISIONS

72. REVISIONS

73. REVISIONS

74. REVISIONS

75. REVISIONS

76. REVISIONS

77. REVISIONS

78. REVISIONS

79. REVISIONS

80. REVISIONS

81. REVISIONS

82. REVISIONS

83. REVISIONS

84. REVISIONS

85. REVISIONS

86. REVISIONS

87. REVISIONS

88. REVISIONS

89. REVISIONS

90. REVISIONS

91. REVISIONS

92. REVISIONS

93. REVISIONS

94. REVISIONS

95. REVISIONS

96. REVISIONS

97. REVISIONS

98. REVISIONS

99. REVISIONS

100. REVISIONS

REVISION HISTORY

NO. DESCRIPTION DATE BY CHKD.

1. PRELIMINARY SITE PLAN 10/10/2023 PRITHVI RAJ PRITHVI RAJ

2. REVISIONS

3. REVISIONS

4. REVISIONS

5. REVISIONS

6. REVISIONS

7. REVISIONS

8. REVISIONS

9. REVISIONS

10. REVISIONS

11. REVISIONS

12. REVISIONS

13. REVISIONS

14. REVISIONS

15. REVISIONS

16. REVISIONS

17. REVISIONS

18. REVISIONS

19. REVISIONS

20. REVISIONS

21. REVISIONS

22. REVISIONS

23. REVISIONS

24. REVISIONS

25. REVISIONS

26. REVISIONS

27. REVISIONS

28. REVISIONS

29. REVISIONS

30. REVISIONS

31. REVISIONS

32. REVISIONS

33. REVISIONS

34. REVISIONS

35. REVISIONS

36. REVISIONS

37. REVISIONS

38. REVISIONS

39. REVISIONS

40. REVISIONS

41. REVISIONS

42. REVISIONS

43. REVISIONS

44. REVISIONS

45. REVISIONS

46. REVISIONS

47. REVISIONS

48. REVISIONS

49. REVISIONS

50. REVISIONS

51. REVISIONS

52. REVISIONS

53. REVISIONS

54. REVISIONS

55. REVISIONS

56. REVISIONS

57. REVISIONS

58. REVISIONS

59. REVISIONS

60. REVISIONS

61. REVISIONS

62. REVISIONS

63. REVISIONS

64. REVISIONS

65. REVISIONS

66. REVISIONS

67. REVISIONS

68. REVISIONS

69. REVISIONS

70. REVISIONS

71. REVISIONS

72. REVISIONS

73. REVISIONS

74. REVISIONS

75. REVISIONS

76. REVISIONS

77. REVISIONS

78. REVISIONS

79. REVISIONS

80. REVISIONS

81. REVISIONS

82. REVISIONS

83. REVISIONS

84. REVISIONS

85. REVISIONS

86. REVISIONS

87. REVISIONS

88. REVISIONS

89. REVISIONS

90. REVISIONS

91. REVISIONS

92. REVISIONS

93. REVISIONS

94. REVISIONS

95. REVISIONS

96. REVISIONS

97. REVISIONS

98. REVISIONS

99. REVISIONS

100. REVISIONS

PROPOSED SITE PLAN

AA 1.1

10/10/2023

PRITHVI RAJ

PRITHVI RAJ

PRITHVI RAJ & RUCHIKA YADAV

3440 Truman Avenue, Mountain View, CA 94039

10/10/2023

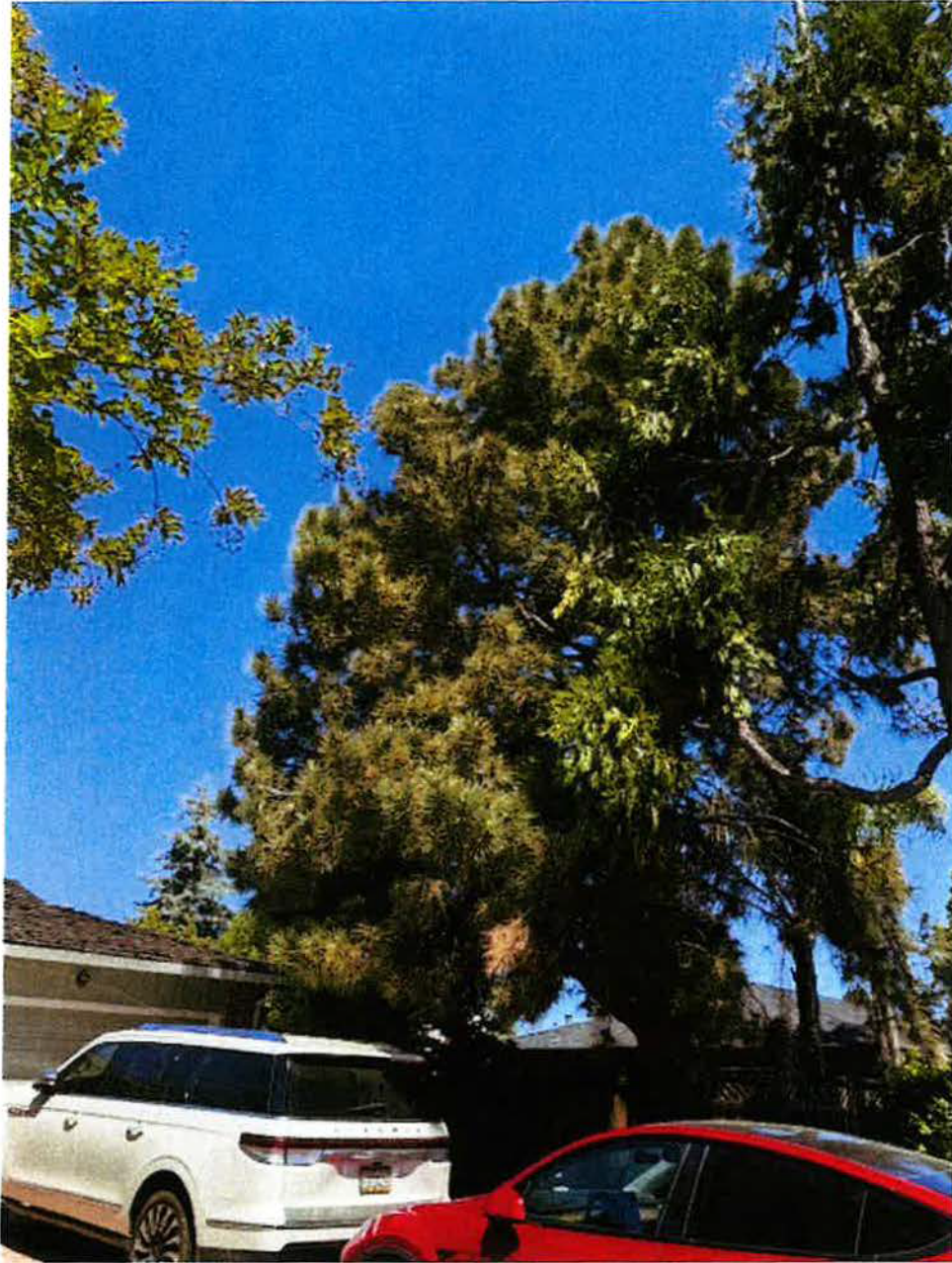
PRITHVI RAJ

PRITHVI RAJ

Feisthamel, Matthew

From: Feisthamel, Matthew
Sent: Monday, May 19, 2025 1:15 PM
To: Feisthamel, Matthew
Subject: 3440 Truman Ave A





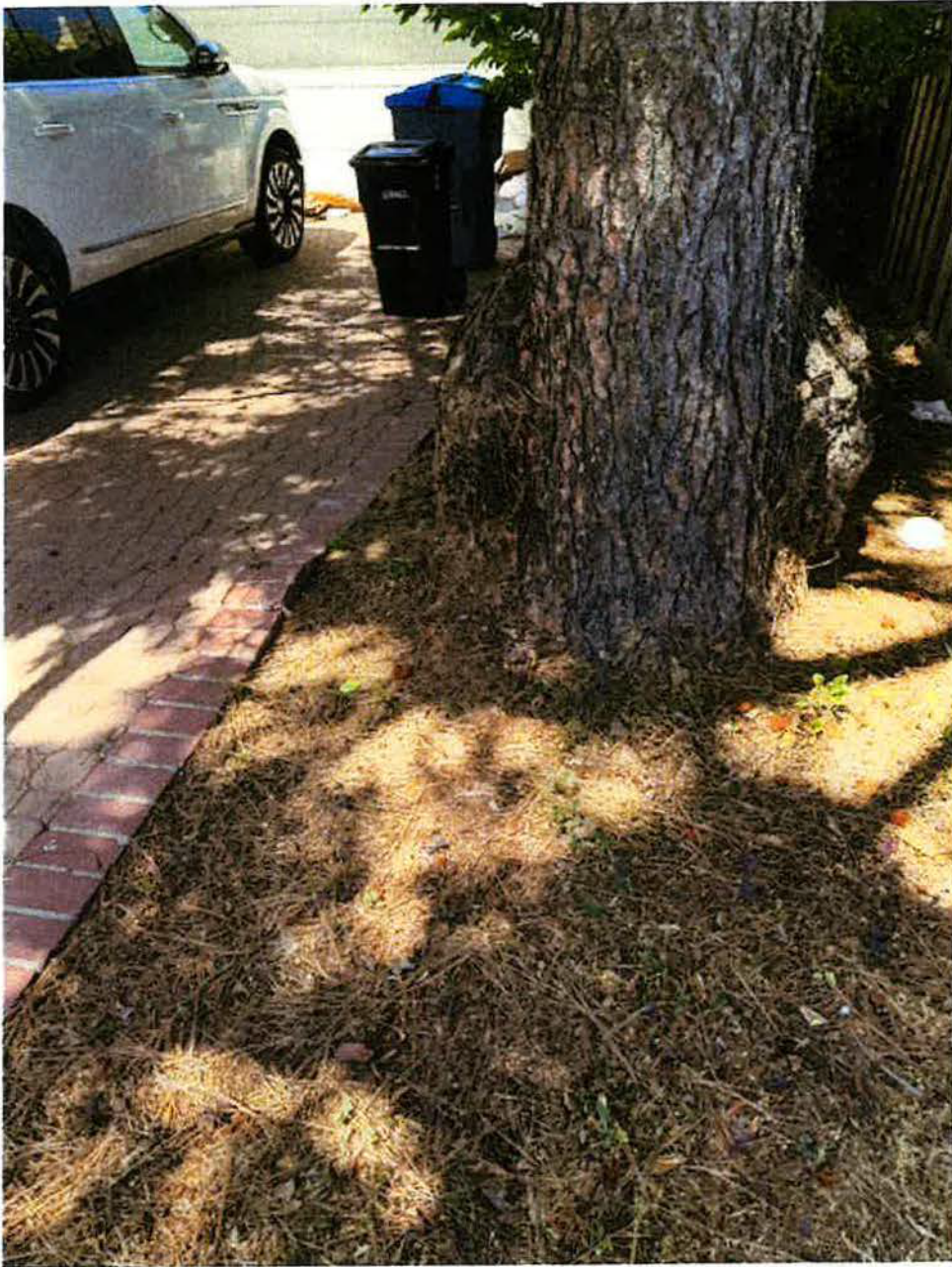


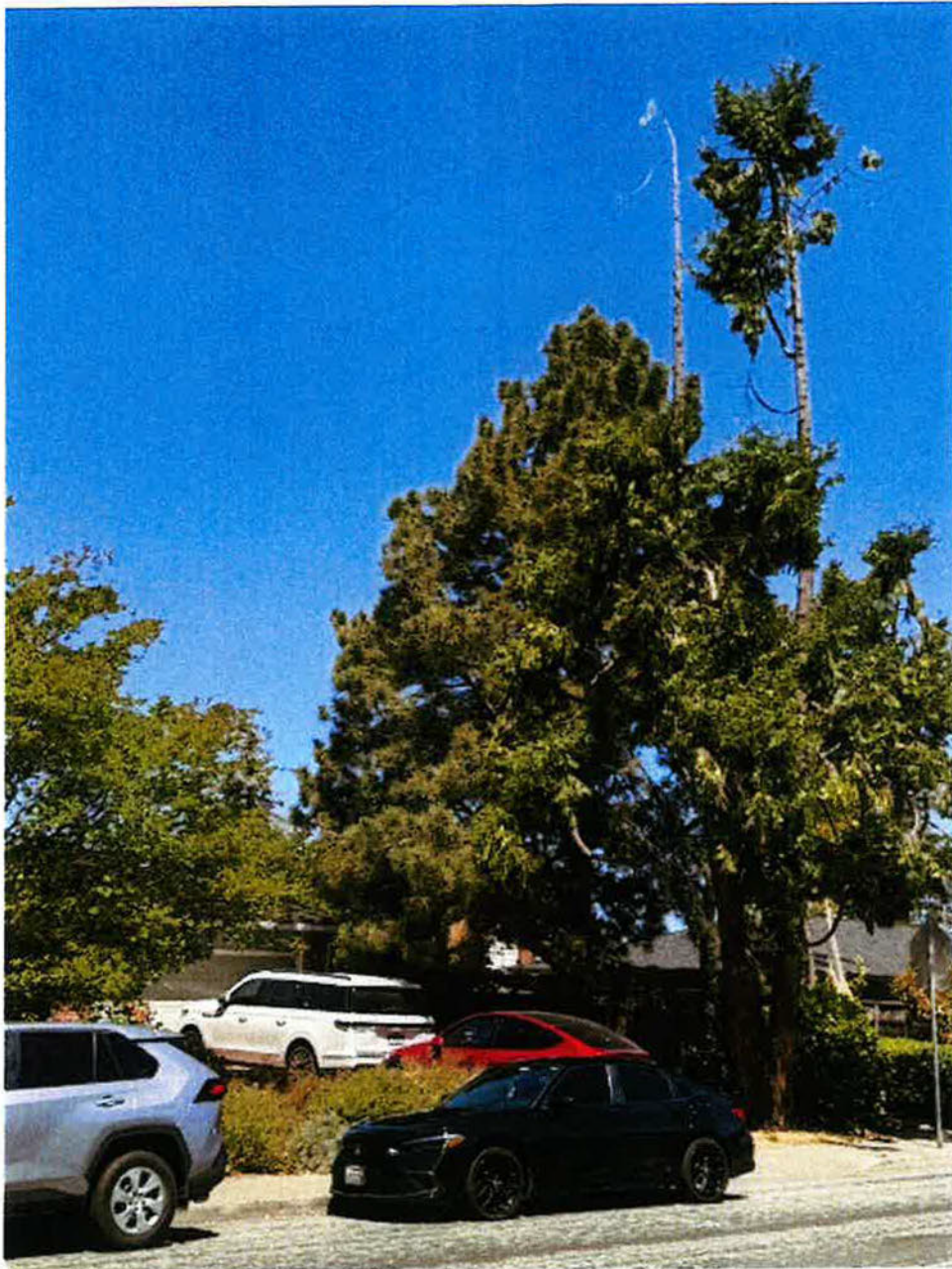
Sent from my iPhone

Feisthamel, Matthew

From: Feisthamel, Matthew
Sent: Monday, May 19, 2025 1:16 PM
To: Feisthamel, Matthew
Subject: 3440 Truman Avenue C







Sent from my iPhone