



BOARD REPORT

DATE: June 23, 2026

CATEGORY: Consent

DEPT.: Public Works

TITLE: **Shoreline Sea Level Rise Study Update,
Project 21-54—Professional Services
Amendment**

RECOMMENDATION

Acting in its capacity as Board of Directors of the Shoreline Regional Park Community, authorize the Community Manager or designee to amend the professional services agreement with GHD, Inc., a California corporation (Entity No. 2889127) for Shoreline Sea Level Rise Study Update, Project 21-54, increasing compensation by \$400,000 for additional engineering services, for a total amount not to exceed \$799,080.

BACKGROUND

The City of Mountain View lies on the alluvial plain of Santa Clara Valley with the ground surface descending from the hills south of the City to San Francisco Bay. The area north of U.S. 101, including the North Bayshore Area, is a low-lying area and is subject to flooding due to stormwater runoff and high tides and is, therefore, sensitive to sea level rise impacts (Figure 1). Even without sea level rise, some properties in the area are within the Federal Emergency Management Agency (FEMA) 100-year special flood hazard zone.



Figure 1: North Bayshore Area Map

2012 Shoreline Regional Park Community Sea Level Rise Study

In 2012, in response to the existing flood risk for the North Bayshore Area and the anticipated sea level rise risk, the City developed the Shoreline Regional Park Community Sea Level Rise Study Feasibility report and Capital Improvement Program report (2012 Study). The 2012 Study proposed a sea level rise planning horizon of Year 2067, projected the future water surface elevations at the Bay with both high and low sea level rise projections under a 100-year event, estimated the coastal flood vulnerabilities in the North Bayshore Area, and developed a Sea Level Rise Capital Improvement Program (SLR CIP) to address the existing and the projected coastal flood risk.

2021 Updated Sea Level Rise Study

Since 2012, sea level rise projections and regional planning efforts have continued to evolve. In 2018, the California Ocean Protection Council updated the State of California Sea Level Rise Guidance, with new projections and planning resources for coastal communities to develop strategies to address sea level rise adaptation. Using this new guidance, data from the City's 2019 Storm Drain Master Plan, and ongoing local and regional efforts, City staff updated the 2012 sea level rise study in 2021. The update reassessed impacts to the City, revised the SLR CIP, and incorporated the South Bay Salt Pond Restoration Project at Pond A1 and Pond A2W located immediately north of the City's shoreline. Staff presented the 2021 study to the City Council on [June 22, 2021](#) and recommended an updated SLR CIP with 14 projects to prepare the City for adaptation to sea level rise. Figure 2 summarizes the current project status in the SLR CIP.

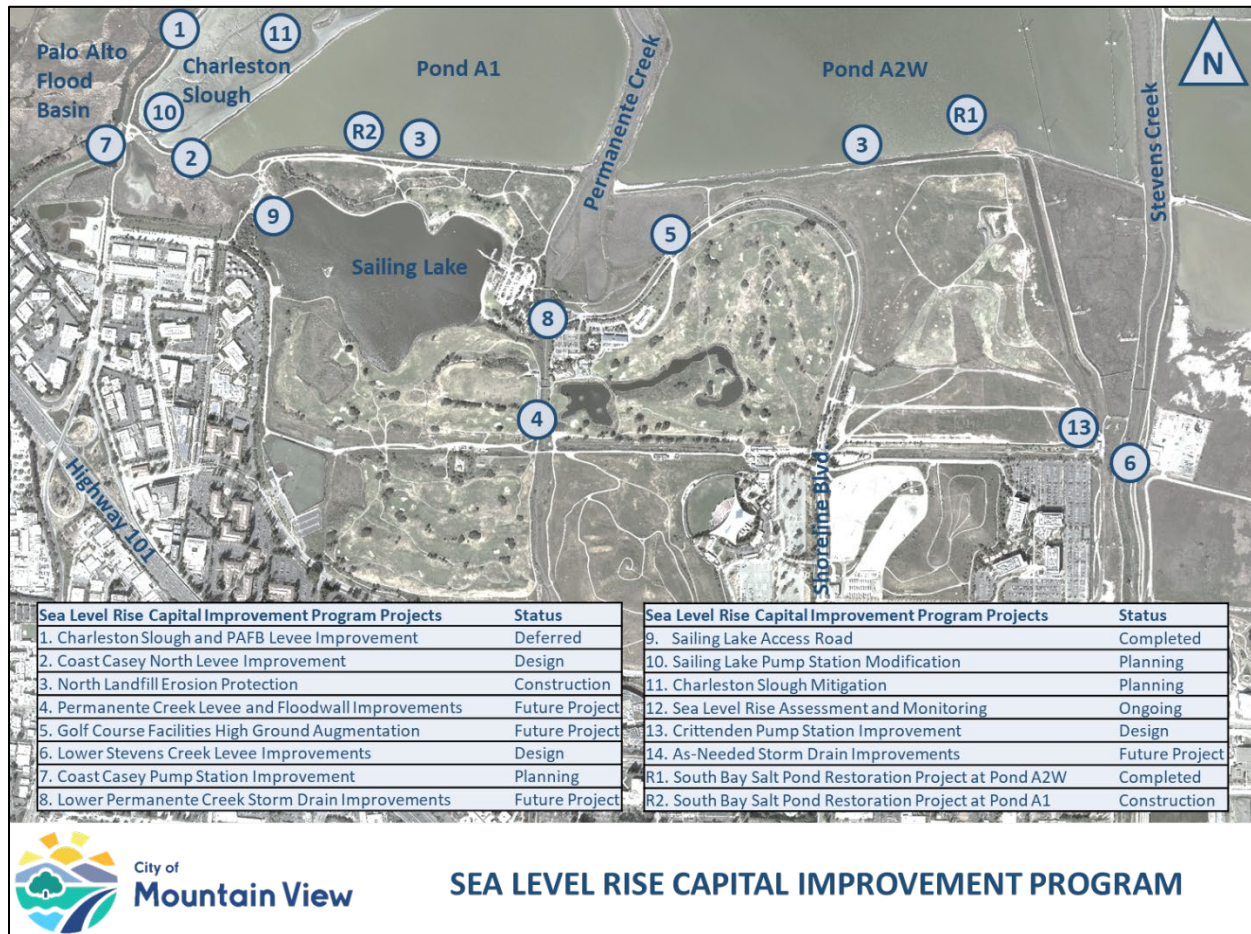


Figure 2: Sea Level Rise Capital Improvement Program Status Summary

Regional Shoreline Adaptation Plan

In 2023, the California State Legislature passed Senate Bill 272 (SB 272), Sea level rise: planning and adaptation. SB 272 addressed the need for coordinated standardized sea level rise adaptation by requiring local governments along the San Francisco Bay shoreline to develop Sub-regional Shoreline Adaptation Plans. SB 272 also required the Bay Conservation and Development Commission (BCDC) to create a Regional Shoreline Adaptation Plan (RSAP) for local governments to follow when planning for the impacts of sea level rise along the San Francisco Bay shoreline. The RSAP was adopted by the BCDC Commission in December 2024.

The RSAP requires local governments along San Francisco Bay to develop Sub-regional Shoreline Adaptation Plans. In partnership with Santa Clara County, the City and other Santa Clara County cities along the south San Francisco Bay are collaborating to develop a Sub-regional Shoreline Adaptation Plan to address long-term sub-regional sea level rise adaptation. To support this collaborative effort, in 2025, Santa Clara County applied for a Senate Bill 1 Sea Level Rise

Adaptation Planning Grant. On September 30, 2025, the California Ocean Protection Council authorized the disbursement of up to \$2,631,383 to Santa Clara County, and the County is currently working on a grant award and acceptance agreement. City staff are part of the county-wide team, and the regional planning work is anticipated to begin in fall 2026.

ANALYSIS

To support the regional planning effort and to advance the City's ongoing sea level rise adaptation efforts, the City needs to update the SLR CIP to align with BCDC's RSAP guidelines. This update will build upon the City's 2021 study, review and update the planned project list, revise the concept design, and provide a new planning level cost estimate for each project in the SLR CIP for budget planning. The updated SLR CIP will also be incorporated into the Sub-regional Shoreline Adaptation Plan development effort, to represent the specific adaptation needs for Mountain View.

The City has an on-call professional services agreement with GHD, Inc. (GHD), for Shoreline Sea Level Rise Study Update, Project 21-54. GHD's services include various technical disciplines, including environmental and regulatory permitting, civil engineering, geotechnical engineering, structural engineering, hydraulic engineering, tidal restoration design, ecology, and fluvial geomorphology. The City executed an agreement with GHD on November 6, 2020 for \$99,080 to start preparing the 2021 Shoreline Sea Level Rise Study Update. In order to provide additional support services, on March 11, 2022, the City executed an amendment with GHD to add \$300,000, bringing the total contract value to \$399,080.

To prepare the 2026 Sea Level Rise Study Update, staff recommends amending the GHD agreement by an additional \$400,000, bringing the total not-to-exceed contract amount to \$799,080. With the amendment, GHD will update the SLR CIP based on the RSAP guidelines, provide technical support to the City for the Sub-regional Shoreline Adaptation Plan development, and continue to provide as-needed support services to the City's watershed management and sea level rise adaptation efforts.

FISCAL IMPACT

Shoreline Sea Level Rise Study Update, Project 21-54, is funded with \$1,110,000 from the Shoreline Regional Park Community Fund. There are sufficient funds available in Project 21-54 to fund the recommended contract amendment; therefore, no additional appropriation is required.

LEVINE ACT

California Government Code Section 84308 (also known as the Levine Act) prohibits city officials from participating in any proceeding involving a "license, permit, or other entitlement for use" if

the official has received a campaign contribution exceeding \$500 from a party, participant, or agent of a party or participant within the last 12 months. The Levine Act is intended to prevent financial influence on decisions that affect specific, identifiable persons or participants. For more information see the Fair Political Practices Commission website: www.fppc.ca.gov/learn/pay-to-play-limits-and-prohibitions.html

Please see below for information about whether the recommended action for this agenda item is subject to or exempt from the Levine Act.

SUBJECT TO THE LEVINE ACT

Contract or franchise agreement

CONCLUSION

To meet BCDC's RSAP requirements, the City must update its plans for sea level rise adaptation and concurrently update the SLR CIP. Staff recommends amending the agreement with GHD to provide professional services for the Shoreline Sea Level Rise Study Update, Project 21-54, and provide technical support to the City for the Sub-regional Shoreline Adaptation Plan development, increasing compensation by \$400,000 for additional engineering services, for a total amount not to exceed \$799,080.

ALTERNATIVES

1. Do not authorize the amendment.
3. Provide other direction.

PUBLIC NOTICING—Agenda posting.

Prepared by:

Raymond Wong
Senior Civil Engineer

Reviewed by:

Lisa Au
Assistant Public Works Director

Approved by:

Jennifer Ng
Public Works Director

Audrey D. Seymour
Assistant City Manager

cc: SMA-Goedicke, F (21-54)