

**DATE:** August 23, 2023

**TO:** Tennis Advisory Board

**FROM:** Stephanie Lum, Senior Recreation Coordinator  
Colin James, Recreation Supervisor  
Kristine Crosby, Recreation Manager

**SUBJECT:** Rengstorff Park Pickleball Pilot Program Update

---

**RECOMMENDATION**

Review and forward staff recommendation to the Parks and Recreation Commission regarding the Pickleball Pilot Program of adding dual-striped pickleball courts to courts at the Rengstorff Park Tennis Courts:

- Continue the dual-striped Pickleball Program at Rengstorff Park Tennis Courts on Courts 3 and 4; and
- Continue the designated play times for each sport on dual-striped Courts 3 and 4—Monday through Friday and Sunday, 10:00 a.m. to 3:00 p.m.; Monday and Thursday, 6:00 p.m. to 8:00 p.m.; and Saturday, 2:00 p.m. to 7:00 p.m., for pickleball play and allow staff to adjust the schedule as needed.

**BACKGROUND**

On [May 19, 2022](#), the Tennis Advisory Board (TAB) received a presentation on the Pickleball Community Input Survey results with a staff recommendation to implement a pilot program of adding dual-striped courts to two tennis courts at Rengstorff Park. Following deliberation, the TAB forwarded a recommendation to the Parks and Recreation Commission (PRC) to dual-stripe two tennis courts at Cooper Park with access for Pickleball from 8:00 a.m. to 3:00 p.m. daily.

On [June 29, 2022](#), staff presented the TAB's recommendation to the PRC. The PRC made a motion for a six-month pilot program of dual-striping Courts 3 and 4 at the Rengstorff Park Tennis Courts with designated times for each sport to include weekday, evening, and weekend hours at the staff's discretion. The PRC requested that staff return to both the TAB and PRC following the scheduled pilot program to provide program updates and outcomes.

## **ANALYSIS**

Following the June 29, 2022 PRC meeting, staff initiated the process of dual-striping six pickleball courts on tennis Courts 3 and 4 at Rengstorff Park. Staff began the process in late July to find a vendor to stripe the courts. Following a brief delay in executing an agreement with a qualified vendor, the striping was completed on December 7, 2022. Staff worked with the vendor to stripe the courts to USTA guidelines to ensure that the courts would still be playable for tennis matches. Shortly thereafter, it was brought to staff's attention that the dimensions were not to the guidelines requested for a few of the pickleball courts. Staff promptly contacted the vendor to rectify the error, but due to the unusually wet winter, the restriping could not be scheduled until January 30, 2023. Following the completion of the restriping, staff officially commenced the six-month pilot program.

In tandem with the court striping, staff reviewed existing tennis court usage and the feedback received from the pickleball community input survey to develop the dedicated sport hours of Monday through Friday and Sunday, 10:00 a.m. to 3:00 p.m.; Monday and Thursday, 6:00 p.m. to 8:00 p.m.; and Saturday, 2:00 p.m. to 7:00 p.m., for pickleball play on the dual-striped courts. This schedule provided access to the dual-striped courts for pickleball for weekday, evening, and weekend hours. Staff posted signage of the hours on Courts 3 and 4 at the Rengstorff Park Tennis Courts, in addition to a QR code for users to provide feedback throughout the program.

To collect feedback throughout the program, an open-ended survey was made available to participants, providing an avenue for individuals to share their thoughts and suggestions on the pilot program. At the completion of the six-month review period, staff also launched an end-of-program survey, which was posted at the dual-striped courts and shared with pickleball and tennis users, to seek final thoughts on the program. Lastly, staff developed a court monitoring system for ongoing monitoring of court usage and data collection throughout the program's duration. Results of these processes are outlined below.

### **Pilot Program Response**

The review for the six-month Pickleball Pilot Program commenced on January 31, 2023. To gather feedback from participants, staff initiated an open-ended survey posted at the courts and the City's website. This survey was designed to capture comments and opinions throughout the program's duration. Staff received a total of 202 responses with 116 responses from Mountain View residents: 94 respondents identifying themselves as pickleball players, four as tennis players, and 18 as individuals who play both sports. The prevailing sentiment expressed in the open-ended feedback was overwhelmingly positive with participants describing the program as "fantastic." Additionally, there was a recurring request for dedicated pickleball courts to address the growing demand.

One of the primary issues highlighted in the survey responses was related to the rollaway nets provided by the City. The City provided three rollaway nets to be used by Pickleball players on the dual-striped courts with three additional nets available to check out from the Mountain View Community Center. Multiple respondents expressed concerns about the durability of the rollaway nets, noting that they were not holding up well under constant use, and requested the City replace these nets as well as add three more rollaway nets, citing the Community Center is too far away to check out additional nets. Staff is working to purchase new nets, and additional information is provided later in this report.

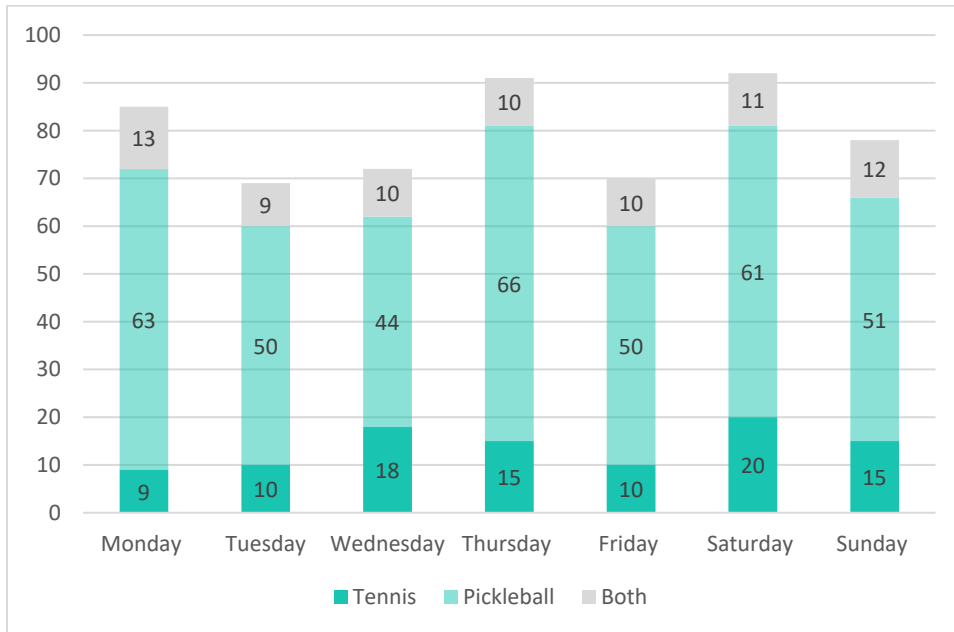
In June 2023, staff conducted an end-of-pilot program survey targeting users and user groups of the Rengstorff Park Tennis Courts. The survey received a total of 148 responses with 141 responses from Mountain View residents, including 92 pickleball players, 27 tennis players, and 22 individuals who play both sports. The feedback obtained through this survey provided further insights into the program's impact and effectiveness and is detailed below.

### **Survey Responses**

The end-of-pilot program survey included questions related to days and times of tennis and pickleball player use, if the dedicated sport hours were adequate, if there were any conflicts with the program, and the aesthetics of the dual-striped courts. The following section provides information from the survey responses.

#### *Days of the Week*

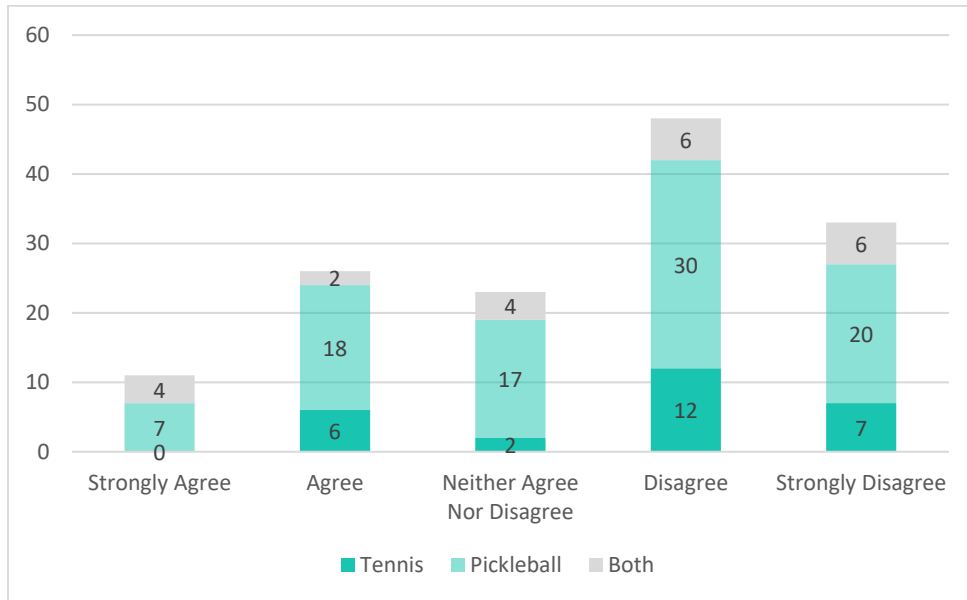
Of the seven days of the week, the dual-striped courts were most used by tennis players on Saturdays followed by Wednesdays, while pickleball players mostly utilized the courts on Mondays and Thursdays, while Saturdays trailed shortly behind. Figure 1 shows what days of the week players were most likely to utilize the dual-striped courts.



**Figure 1: Day of the Week Played by Sport**

*Dedicated Sport Times*

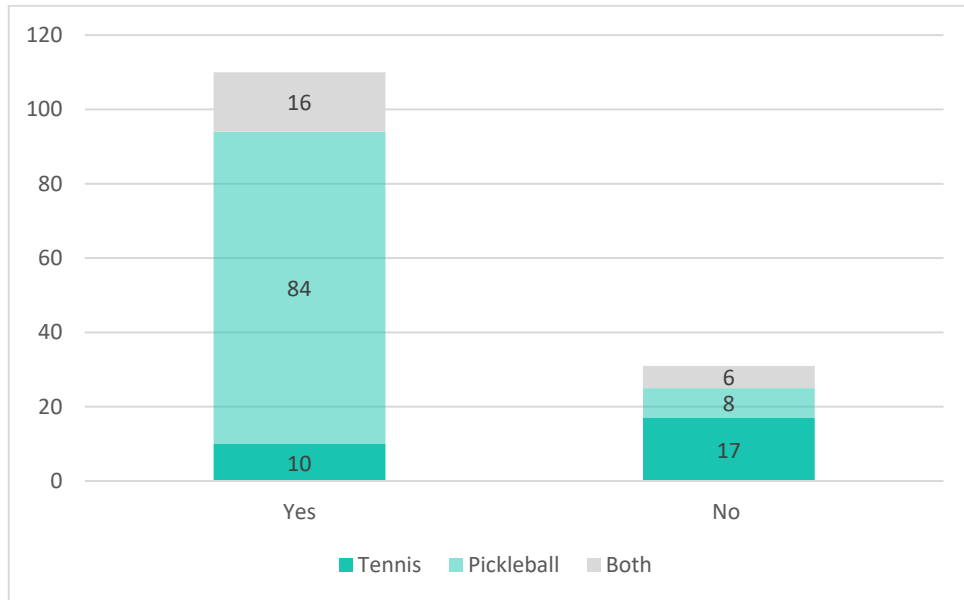
Survey respondents were asked if they believed the pilot program dedicated times by sport provided adequate access for tennis and pickleball on the dual-striped courts. The majority of pickleball players and tennis players both “disagreed” with that statement. However, when reviewing the comments, the disagreement statements were because respondents wanted more access for their dedicated sport of choice. Figure 2 shows the survey responses to whether the current dedicated times provided adequate access for tennis and pickleball play.



**Figure 2: Adequate Dedicated Time by Sport**

*Aesthetics of Dual-Striped Courts*

Survey respondents were asked if they believed the dual-striped courts were still aesthetically playable for both sports. Leading into the pilot program, concerns were shared that it may be difficult to see the appropriate lines on the court when they are lined for two sports. The majority of pickleball players agreed that the courts were easy to play pickleball, while 10 of 27 tennis players agreed that the courts were still playable for tennis. Figure 3 displays the responses of users who found the dual courts still playable, although lined for two sports.

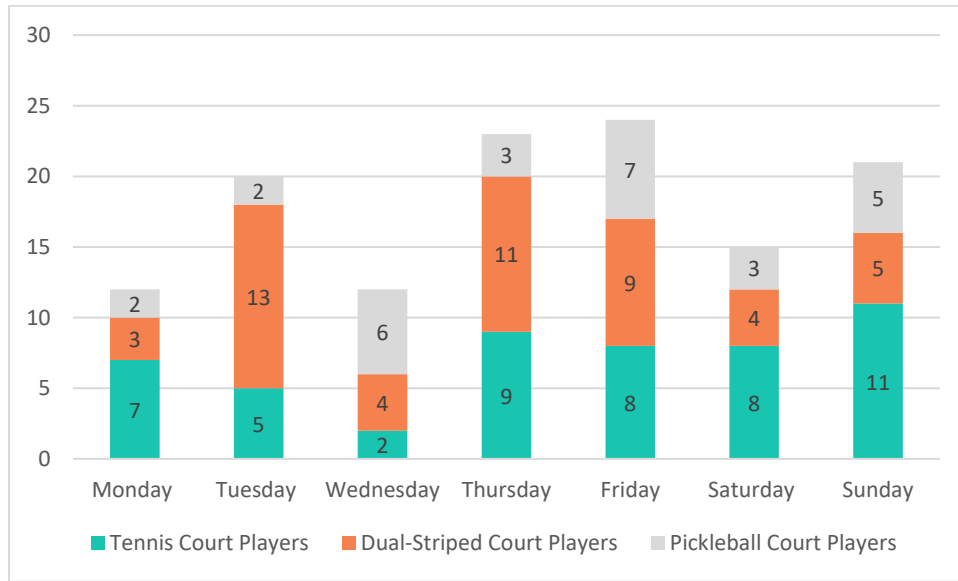


**Figure 3: Aesthetically Playable for Both Sports**

**Court Monitoring Results**

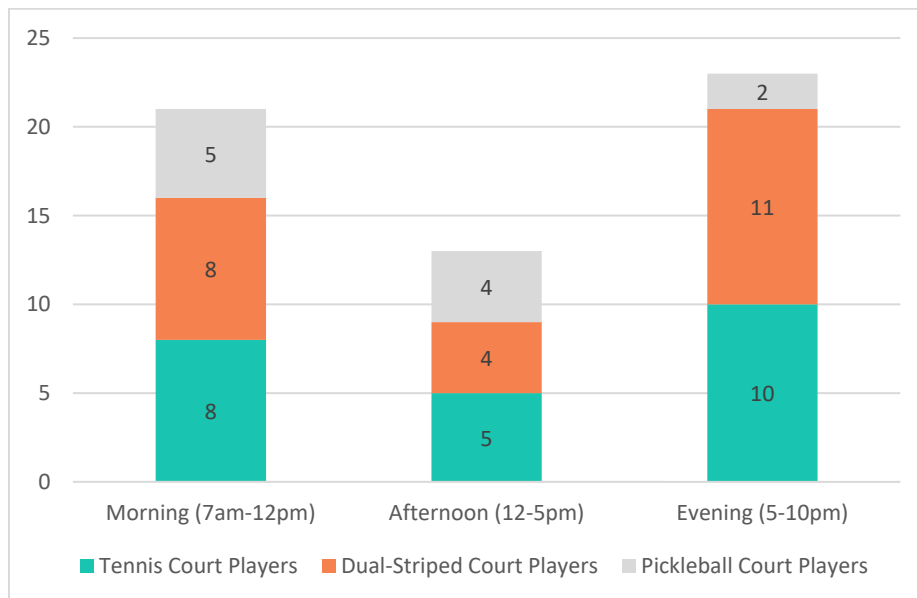
Recreation staff embarked on a court monitoring program to record the number of people using the tennis and pickleball courts at Rengstorff Park during the pilot program hours. On random days and times of the week during hours of dedicated pickleball times, staff recorded the number of people playing or waiting to play on each of the courts—tennis courts, dual-striped courts, and dedicated pickleball courts.

Staff monitored the courts a total of 44 times: 17 times during the morning (7:00 a.m. to 12:00 noon), 15 times in the afternoon (12:00 noon to 5:00 p.m.), and 12 times in the evening (5:00 p.m. to 10:00 p.m.). Staff recorded that Thursday, Friday, and Sunday had the most court usage by all users, while tennis courts saw the most usage on Sunday and Thursday. The pilot program courts saw the most usage on Tuesday and Thursday, and the dedicated courts saw the most usage on Friday and Wednesday. Figure 4 shows the average number of people observed playing on the tennis and pickleball courts during court monitoring by day of the week.



**Figure 4: Day of the Week Played**

The monitoring data also shows the most utilized time of day for each court. The dual-striped courts and tennis courts were used by more players in the evening hours (5:00 p.m. to 10:00 p.m.) and least utilized in the afternoon hours (12:00 noon to 5:00 p.m.). Figure 5 displays the average number of people observed using the courts by time of day.



**Figure 5: Time of Court Use**

While staff recorded the number of people actively playing on each court, staff also recorded the number of people waiting to play. Throughout the court monitoring, staff witnessed tennis

players waiting for courts on one date: January 22, 10:50 a.m., which was at the same time as a scheduled Mountain View Tennis Club tournament that took up a number of tennis courts. Table 1 provides the average number of players observed playing and waiting at each court type over the court monitoring period. On several dates, staff observed people waiting on the dual-striped and dedicated pickleball courts. Pickleball is a social sport, and it is common for people to socialize and wait for the next round to play.

**Table 1: Average Number of People Observed During Court Monitoring**

| Tennis Courts<br>No. Players | Tennis Courts<br>No. Waiting | Dual Courts<br>No. Players | Dual Courts<br>No. Waiting | Pickleball Court<br>No. Players | Pickleball Court<br>No. Waiting |
|------------------------------|------------------------------|----------------------------|----------------------------|---------------------------------|---------------------------------|
| 7.66                         | 0.07                         | 7.34                       | 1.05                       | 3.59                            | 0.11                            |

The dual-striped pilot program has been a success with ongoing usage by players from both sports. The positive feedback received by staff has been accompanied by very few negative remarks. Based on the feedback gathered through the two surveys, staff concludes that the current dedicated hours and days for each sport are adequate and well-received by the participants.

### **Recommendation for Future of the Pilot Program**

After review of the Pickleball Pilot Program, staff recommends the TAB forward a recommendation to the PRC as follows:

- Continue the dual-striped pickleball program at Rengstorff Park Tennis Courts; and
- Continue the current designated times of play for each sport on dual-striped Courts 3 and 4—Monday through Friday and Sunday, 10:00 a.m. to 3:00 p.m.; Monday and Thursday, 6:00 p.m. to 8:00 p.m.; and Saturday, 2:00 p.m. to 7:00 p.m., for pickleball play and allow staff to make adjustments as needed.

In addition to the above recommendation, the City Council approved funding to develop a feasibility study to review potential locations to add dedicated pickleball courts. On [June 13, 2023](#), Council authorized the City Manager to execute a professional services agreement with Verde Design, Inc., to provide design and construction support services for the Pickleball Court Preliminary Study and Design project.

Verde Design, Inc., is currently in the onboarding process with the City, and work on this project is anticipated to begin in fall 2023. A community meeting is targeted for fall 2023 and will be followed by a PRC presentation for their recommendation to Council. The concept approval is planned for Council consideration in early 2024. The final design is anticipated to be completed by fall 2024, and construction is expected to start in 2025. When construction is completed of



the new dedicated pickleball courts, staff intends to bring the status of the dual-court program back to the TAB and PRC for further guidance.

### **NEXT STEPS**

Following this meeting, staff will bring the TAB's recommendation to the PRC on September 13, 2023 for consideration. If the continuation of the programs is approved by the PRC, staff will remove all "pilot program" language from the marketing materials and continue to evaluate and make adjustments to the program as needed. Staff is currently working to replace the existing rollaway nets with a sturdier option, and should PRC recommend continuing the program at Rengstorff Park, staff will also purchase three additional rollaway nets so all six pickleball court nets are provided by the City

**ALTERNATIVE**—Provide other direction.

### **PUBLIC NOTICING**

In addition to the standard agenda posting, meeting notices were posted at Rengstorff Park Tennis and Pickleball Courts. In addition, a notice was posted to the City website, City social media channels, and on *Nextdoor.com*. Notice has been provided to the Mountain View Tennis Club, Cuesta Tennis Operator Mountain View Tennis Academy, and all pickleball players that have contacted the City in the past year.

SL-CJ-KC/1/CSD

218-08-23-23M